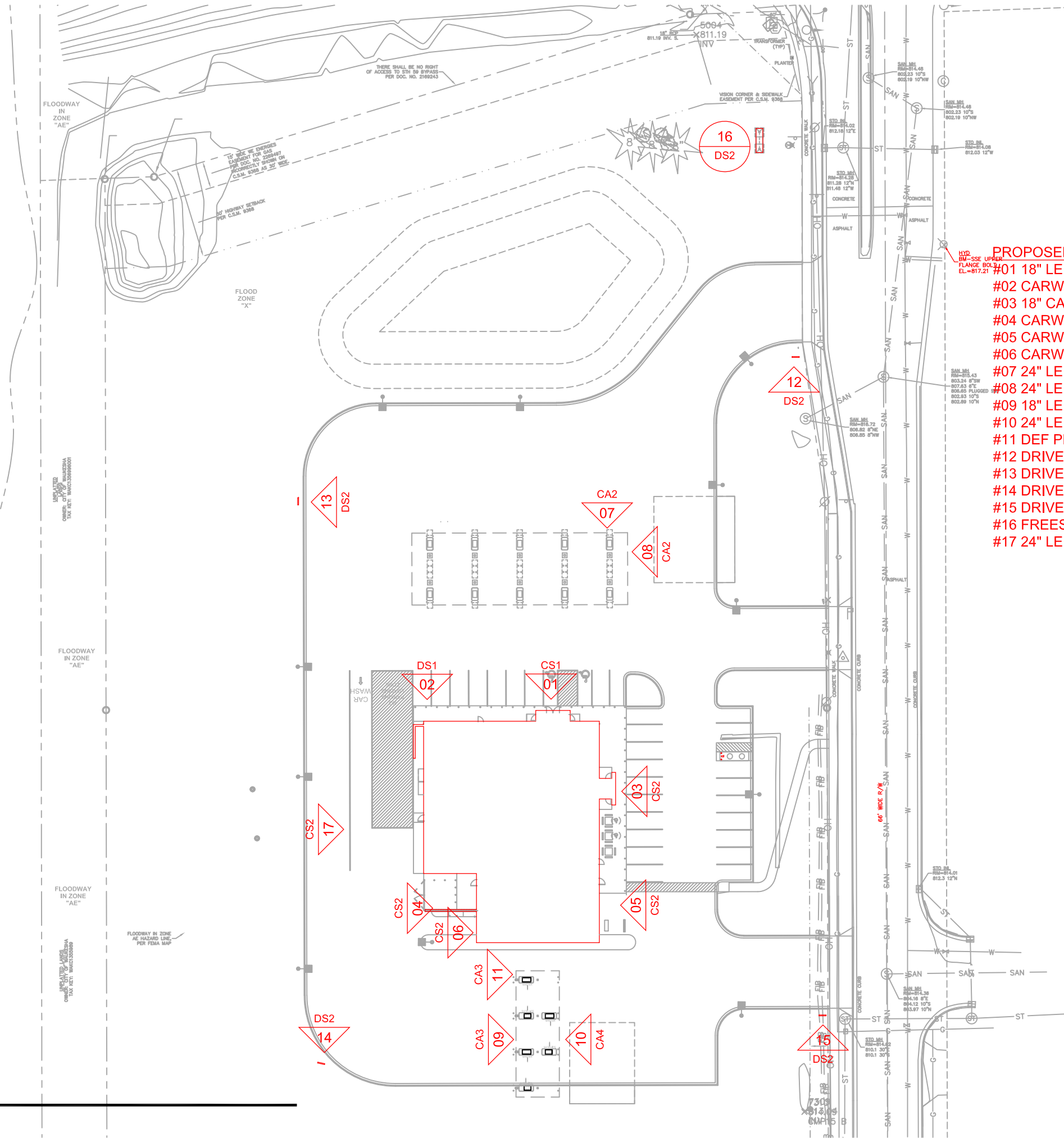


SITE PLAN
1" = 60'-0"



- PROPOSED SIGNS:**
- #01 18" LED KWIK TRIP BUILDING LETTERS
 - #02 CARWASH BUILDING DIRECTIONAL SIGN
 - #03 18" CARWASH BUILDING LETTERS
 - #04 CARWASH ENTER
 - #05 CARWASH EXIT
 - #06 CARWASH INFORMATIONAL SIGN (CHOICE WASH)
 - #07 24" LED KWIK TRIP CANOPY LETTERS
 - #08 24" LED KWIK TRIP CANOPY LETTERS
 - #09 18" LED DIESEL ENTER CANOPY SIGN
 - #10 24" LED DIESEL EXIT CANOPY SIGN
 - #11 DEF PRICE SIGN
 - #12 DRIVEWAY DIRECTIONAL
 - #13 DRIVEWAY DIRECTIONAL
 - #14 DRIVEWAY DIRECTIONAL
 - #15 DRIVEWAY DIRECTIONAL
 - #16 FREESTANDING PYLON SIGN
 - #17 24" LED KWIK TRIP BUILDING LETTERS



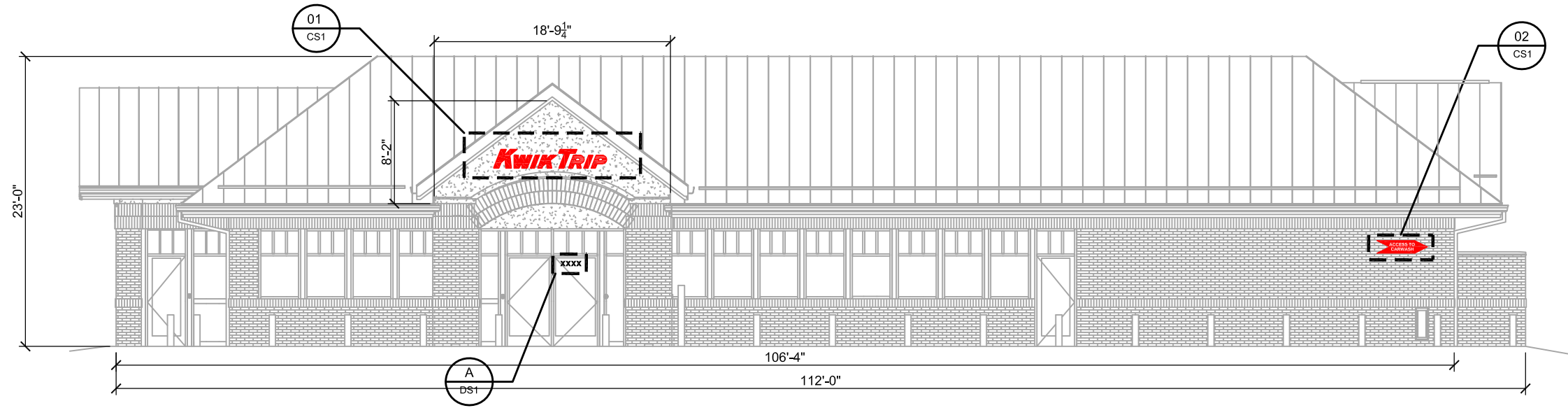
KWIK TRIP, Inc.
P.O. BOX 2107
1626 OAK STREET
LA CROSSE, WI 54602-2107
PH. (608) 781-8988
FAX (608) 781-8960

SITE PLAN
GEN 3 CONVENIENCE STORE #970
WITH 1 BAY CW
2106 S WEST AVE
WAUKESHA, WI

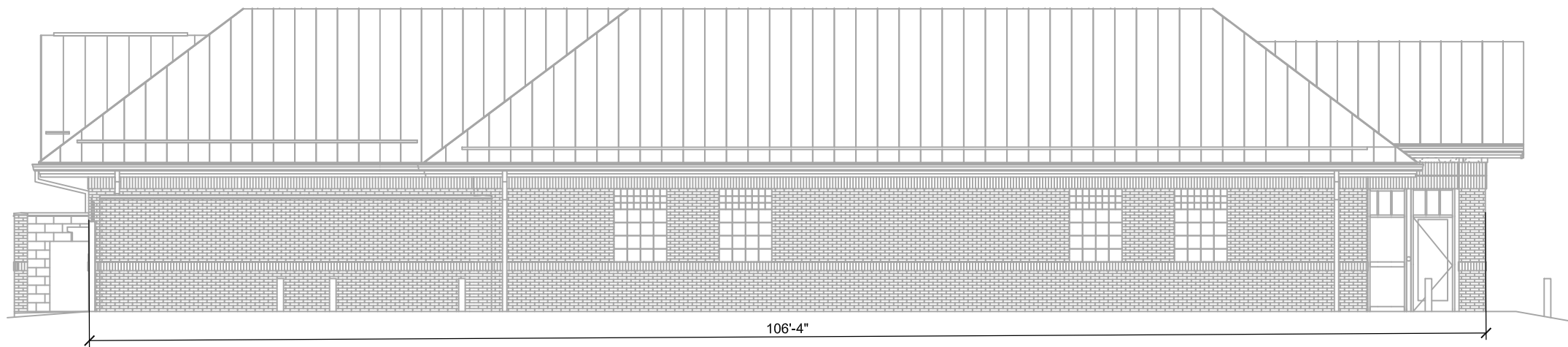
#	DATE	DESCRIPTION
△	2020/04/09	SIGN UPDATE
△	2020/05/06	SIGN UPDATE

DRAWN BY S. WADDELL
SCALE MULTIPLE
PROJ. NO. 0001
DATE 2020-02-25
SHEET SP1

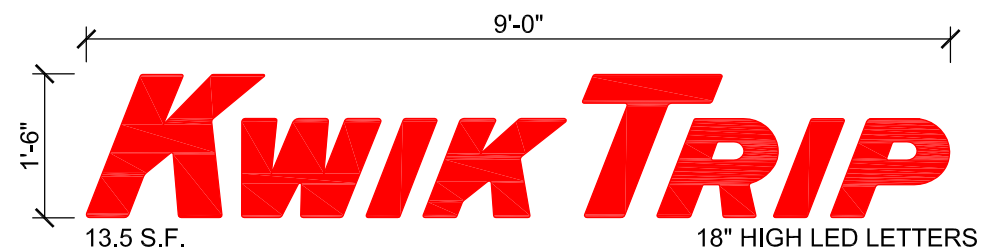




NORTH ELEVATION
SCALE: 3/32" = 1'-0"



SOUTH ELEVATION
SCALE: 3/32" = 1'-0"



LOGO DETAIL - SIGN #01
SCALE: 1/2" = 1'-0"



NON-LIT DIRECTIONAL SIGN
WHITE VINYL ON RED ALUMINUM
1'-0"H X 4'-0"W = 4.0 SQ FT

LOGO DETAIL - SIGN #02
SCALE: 3/4" = 1'-0"

**Kwik
TRIP**

**Kwik
STAR**

KWIK TRIP, Inc.
P.O. BOX 2107
1626 OAK STREET
LA CROSSE, WI 54602-2107
PH. (608) 781-8988
FAX (608) 781-8960

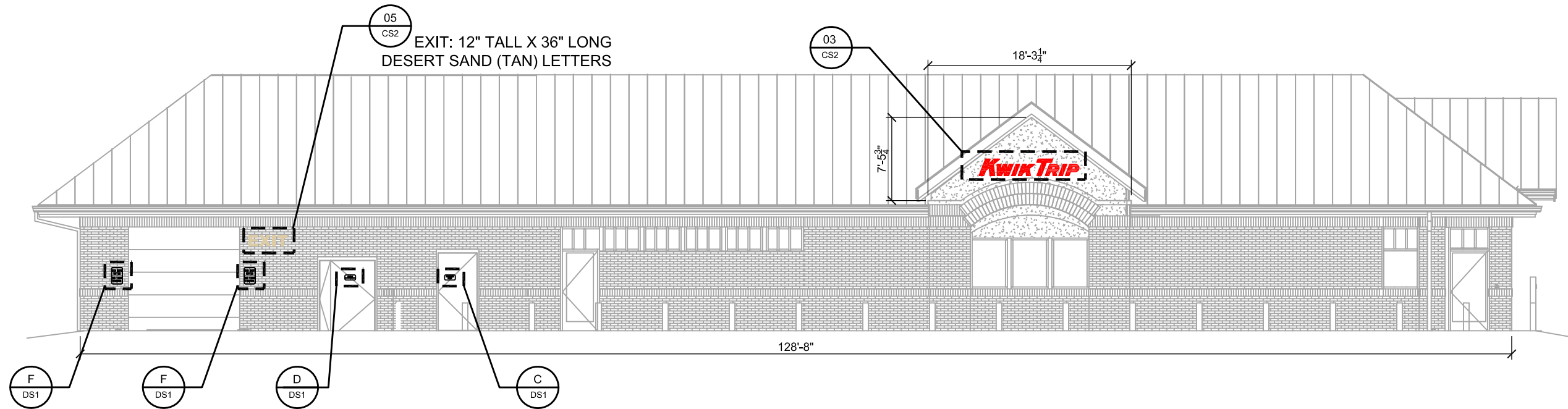
CONVENIENCE STORE SIGNAGE

GEN 3 CONVENIENCE STORE #970
WITH 1 BAY CW

2106 S WEST AVE
WAUKESHA, WI

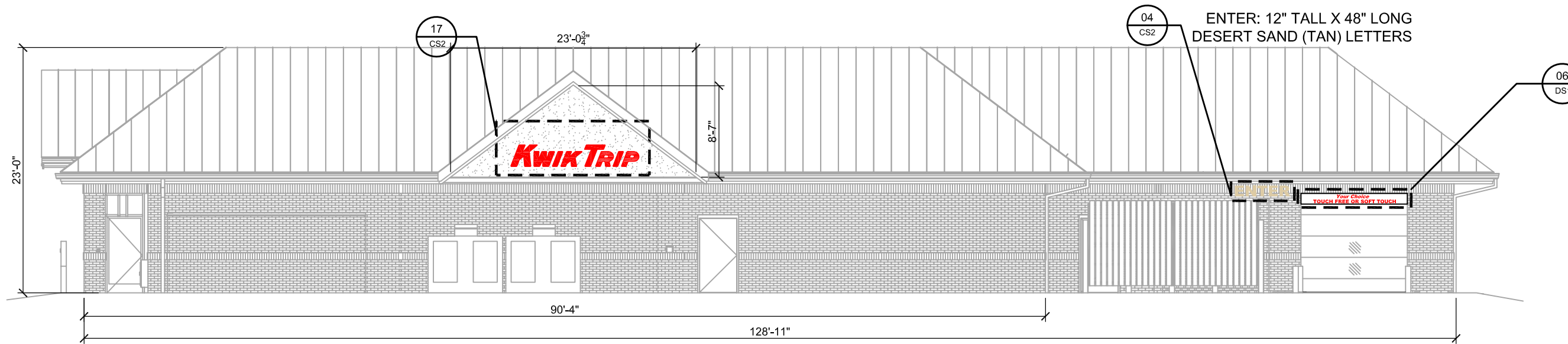
#	DATE	DESCRIPTION
1	2020/04/09	SIGN UPDATE

DRAWN BY	S. WADDELL
SCALE	MULTIPLE
PROJ. NO.	0001
DATE	2020-02-25
SHEET	CS1



EAST ELEVATION

SCALE: 3/32" = 1'-0"



WEST ELEVATION

SCALE: 3/32" = 1'-0"



LOGO DETAIL - SIGN #03

SCALE: 1/2" = 1'-0"



LOGO DETAIL - SIGN #17

SCALE: 1/2" = 1'-0"

**Kwik
TRIP**

**Kwik
STAR**

KWIK TRIP, Inc.
P.O. BOX 2107
1626 OAK STREET
LA CROSSE, WI 54602-2107
PH. (608) 781-8988
FAX (608) 781-8960

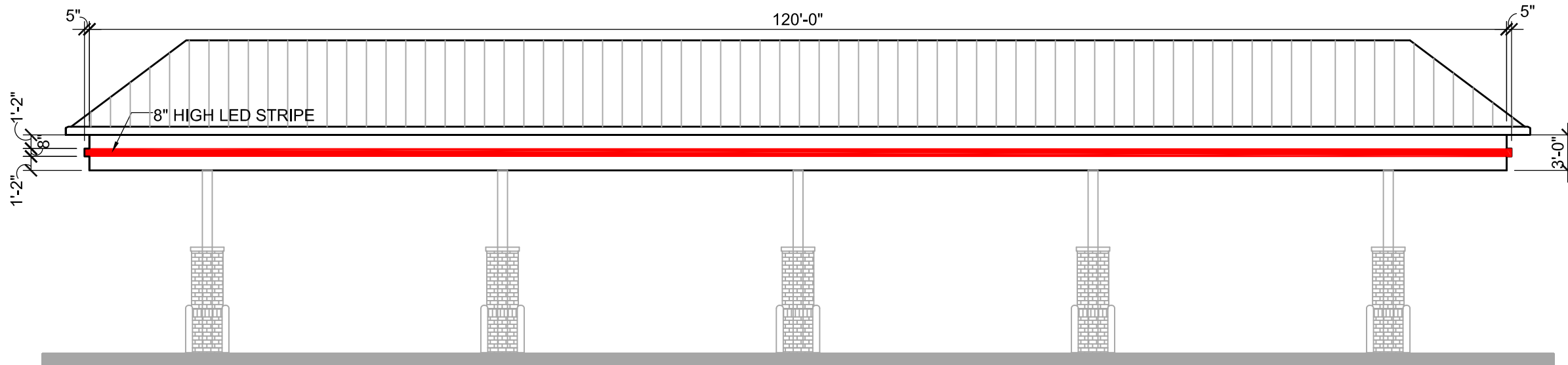
CONVENIENCE STORE SIGNAGE

GEN 3 CONVENIENCE STORE #970
WITH 1 BAY CW

2106 S WEST AVE
WAUKESHA, WI

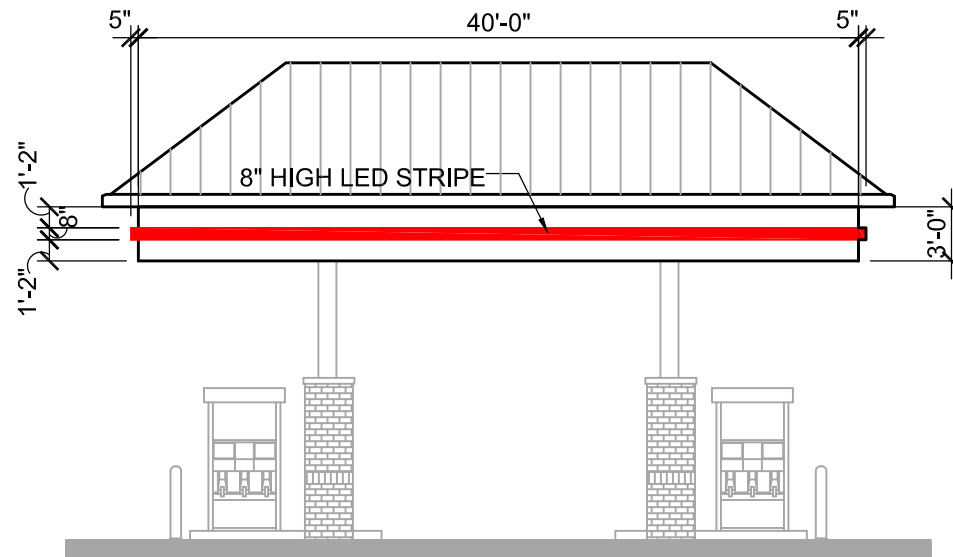
#	DATE	DESCRIPTION
△	2020/04/09	SIGN UPDATE

DRAWN BY S. WADDELL
SCALE MULTIPLE
PROJ. NO. 0001
DATE 2020-02-25
SHEET CS2



CANOPY ELEVATION

SCALE: 3/32" = 1'-0"



CANOPY ELEVATION

SCALE: 3/32" = 1'-0"

**KWIK
TRIP**

**KWIK
STAR**

KWIK TRIP, Inc.
P.O. BOX 2107
1626 OAK STREET
LA CROSSE, WI 54602-2107
PH. (608) 781-8988
FAX (608) 781-8960

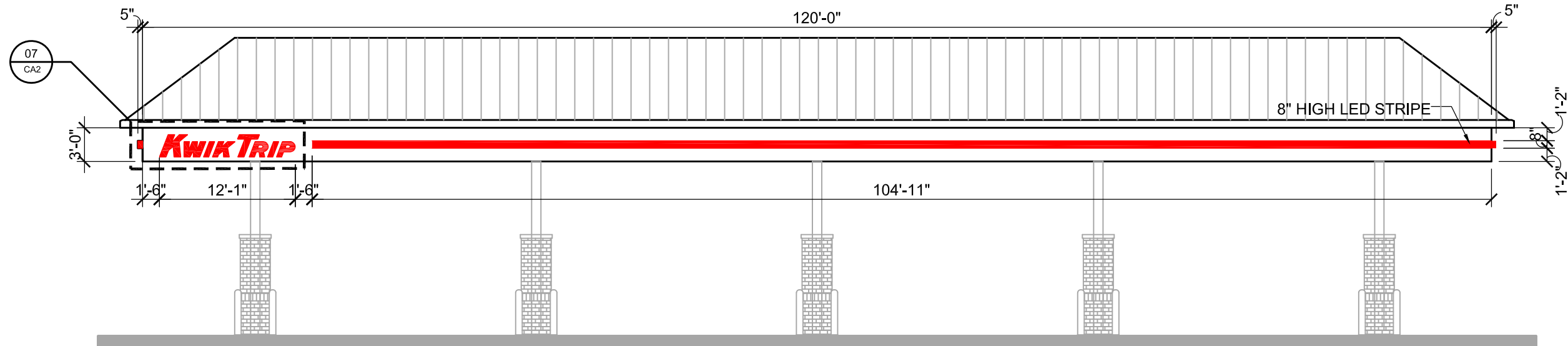
CANOPY SIGNAGE

GEN 3 CONVENIENCE STORE #970
WITH 1 BAY CW

2106 S WEST AVE
WAUKESHA, WI

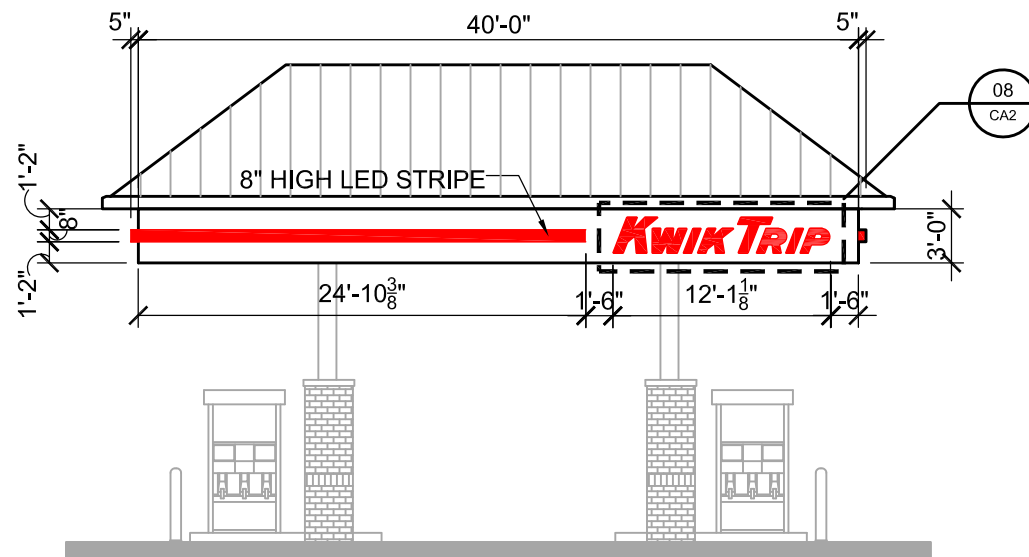
#	DATE	DESCRIPTION
△	2020/04/09	SIGN UPDATE

DRAWN BY S. WADDELL
SCALE MULTIPLE
PROJ. NO. 0001
DATE 2020-02-25
SHEET CA1



CANOPY ELEVATION

SCALE: 3/32" = 1'-0"



CANOPY ELEVATION

SCALE: 3/32" = 1'-0"



LOGO DETAIL - SIGNS #07 & #08

SCALE: 1/2" = 1'-0"

**KWIK
TRIP**

**KWIK
STAR**

KWIK TRIP, Inc.
P.O. BOX 2107
1626 OAK STREET
LA CROSSE, WI 54602-2107
PH. (608) 781-8988
FAX (608) 781-8960

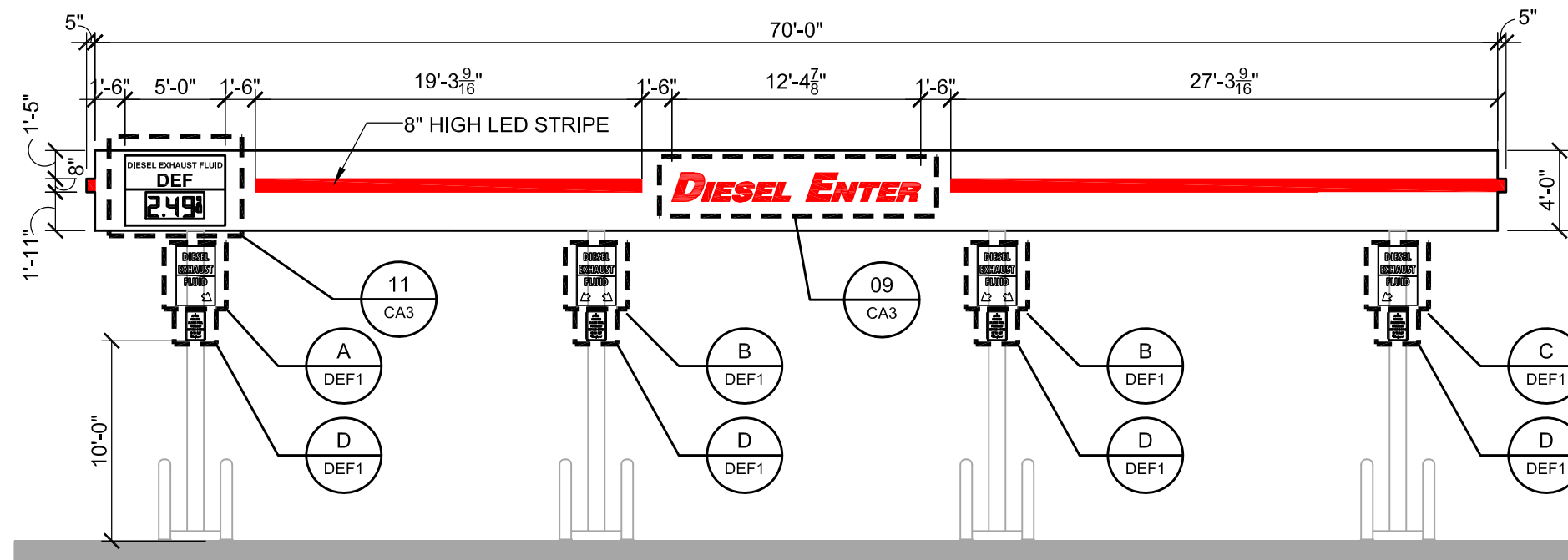
CANOPY SIGNAGE

GEN 3 CONVENIENCE STORE #970
WITH 1 BAY CW

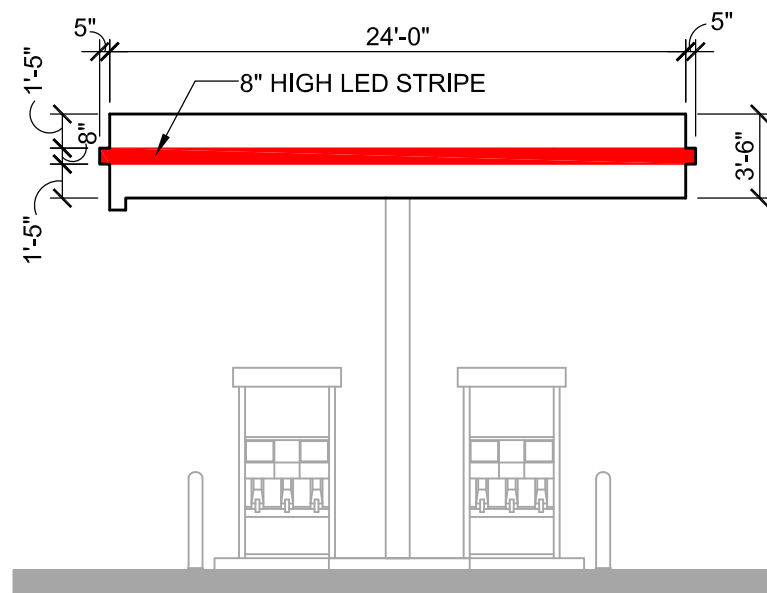
2106 S WEST AVE
WAUKESHA, WI

#	DATE	DESCRIPTION
1	2020/04/09	SIGN UPDATE

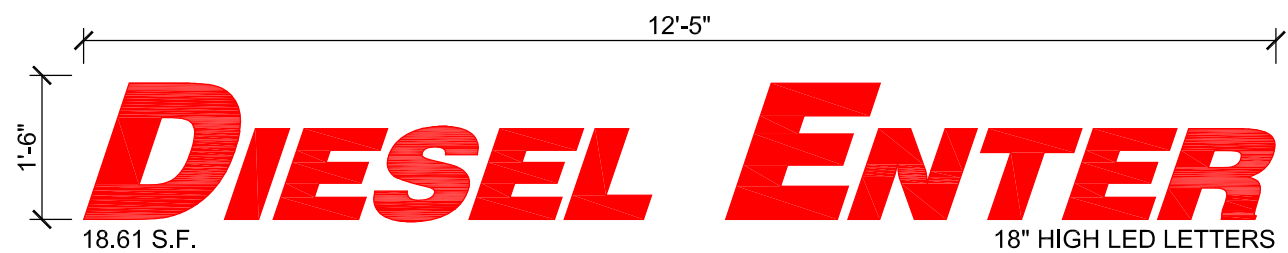
DRAWN BY S. WADDELL
SCALE MULTIPLE
PROJ. NO. 0001
DATE 2020-02-25
SHEET CA2



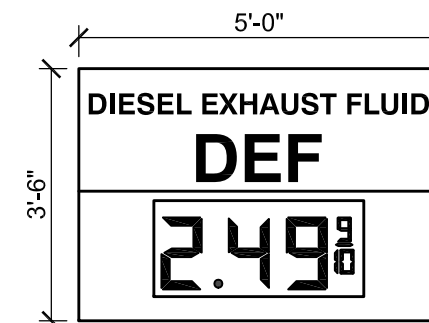
CANOPY ELEVATION
SCALE: 1/8" = 1'-0"



CANOPY ELEVATION
SCALE: 1/8" = 1'-0"



LOGO DETAIL - SIGN #09
SCALE: 1/2" = 1'-0"



DEF DETAIL - SIGN #11
SCALE: 3/8" = 1'-0"

**KWIK
TRIP**

**KWIK
STAR**

KWIK TRIP, Inc.
P.O. BOX 2107
1626 OAK STREET
LA CROSSE, WI 54602-2107
PH. (608) 781-8988
FAX (608) 781-8960

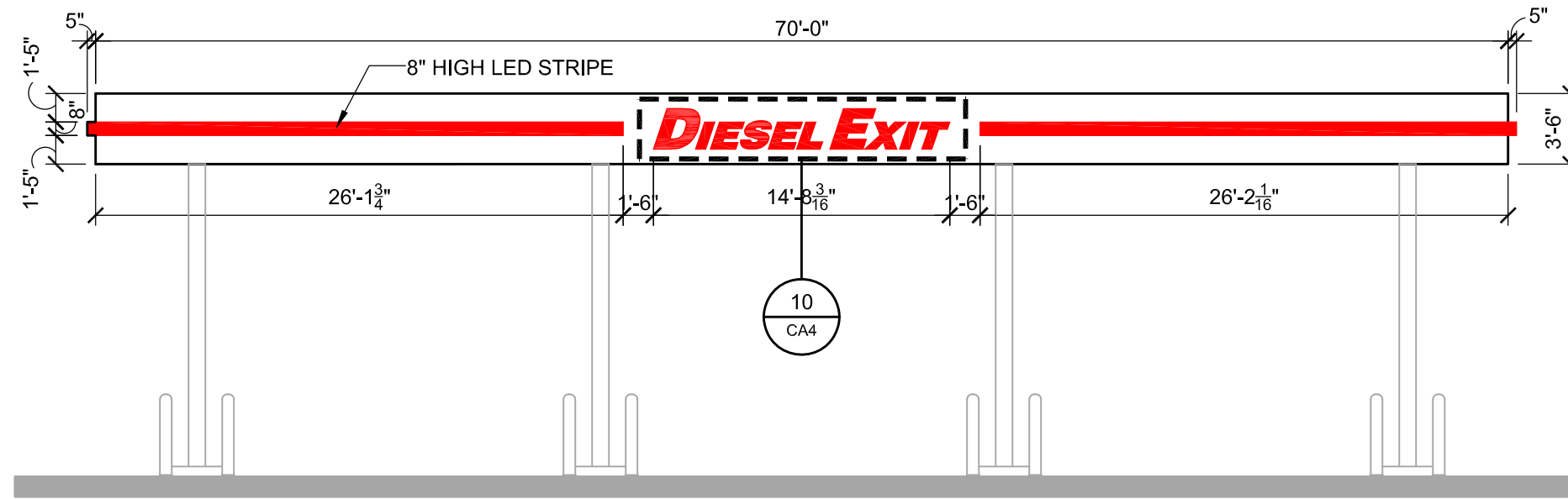
CANOPY SIGNAGE

GEN 3 CONVENIENCE STORE #970
WITH 1 BAY CW

2106 S WEST AVE
WAUKESHA, WI

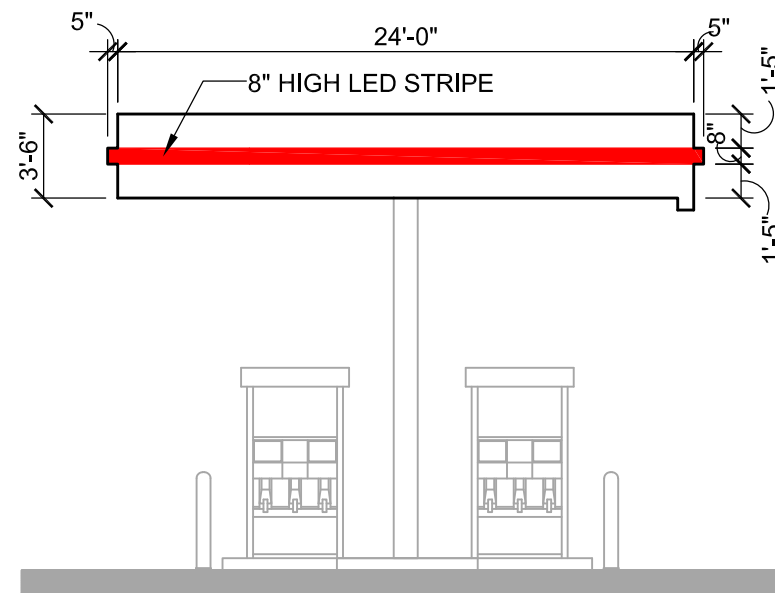
#	DATE	DESCRIPTION
1	2020/04/09	SIGN UPDATE

DRAWN BY S. WADDELL
SCALE MULTIPLE
PROJ. NO. 0001
DATE 2020-02-25
SHEET CA3



CANOPY ELEVATION

SCALE: 1/8" = 1'-0"



CANOPY ELEVATION

SCALE: 1/8" = 1'-0"



LOGO DETAIL - SIGN #10

SCALE: 1/2" = 1'-0"



KWIK TRIP, Inc.
P.O. BOX 2107
1626 OAK STREET
LA CROSSE, WI 54602-2107
PH. (608) 781-8988
FAX (608) 781-8960

CANOPY SIGNAGE
**GEN 3 CONVENIENCE STORE #970
WITH 1 BAY CW**
2106 S WEST AVE
WAUKESHA, WI

#	DATE	DESCRIPTION
△	2020/04/09	SIGN UPDATE

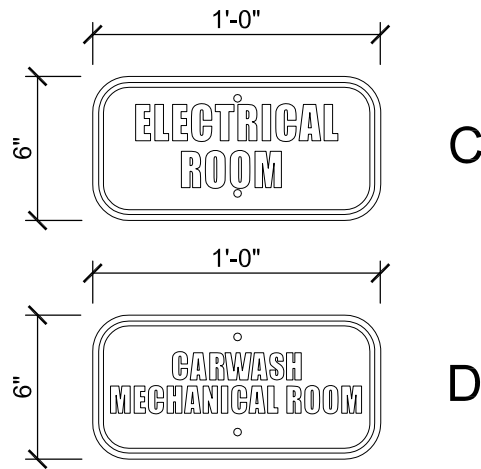
DRAWN BY	S. WADDELL
SCALE	MULTIPLE
PROJ. NO.	0001
DATE	2020-02-25
SHEET	CA4



5" WHITE VINYL ADDRESS LETTERS
ON GLASS DOOR AS SHOWN ABOVE
(VERIFY ACTUAL NUMBERS WITH PROJECT MANAGER)

ADDRESS SIGN A

SCALE: 3/4" = 1'-0"



GENERAL SPECIFICATIONS

(A) ROOM SIGNS
Qty: 3 total (different copy on each)
Size: per art
Material: white sign blank
Finish: cut vinyl

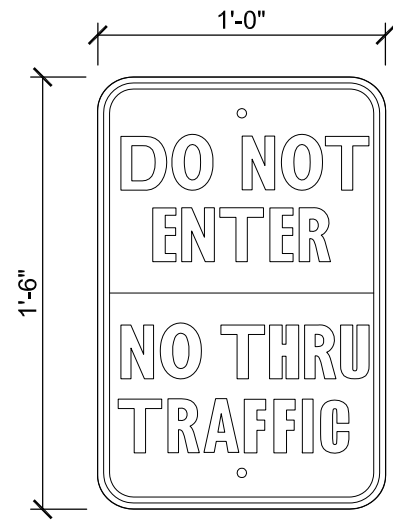
Install along with various signs for same site, crew to give to KT trim guys to install.

INFORMATIONAL SIGNS C & D

SCALE: 1 1/2" = 1'-0"

GENERAL SPECIFICATIONS

(A) 18"x12" ALUMINUM SIGN
Qty:
Size: 18"x12"
Material: Standard white blank
Finish: cut vinyl graphics
Pole Size:
Pole Material:
Pole Finish:
Install:
HAGL:
OAH:



F

INFORMATIONAL SIGN F

SCALE: 1 1/2" = 1'-0"

Your Choice
TOUCH FREE OR SOFT TOUCH

NON-LIT INFORMATIONAL SIGN
RED VINYL ON WHITE ALUMINUM
1'-0"H X 10'-0"W = 10.0 SQ FT

INFORMATIONAL SIGN #06

SCALE: 1/2" = 1'-0"

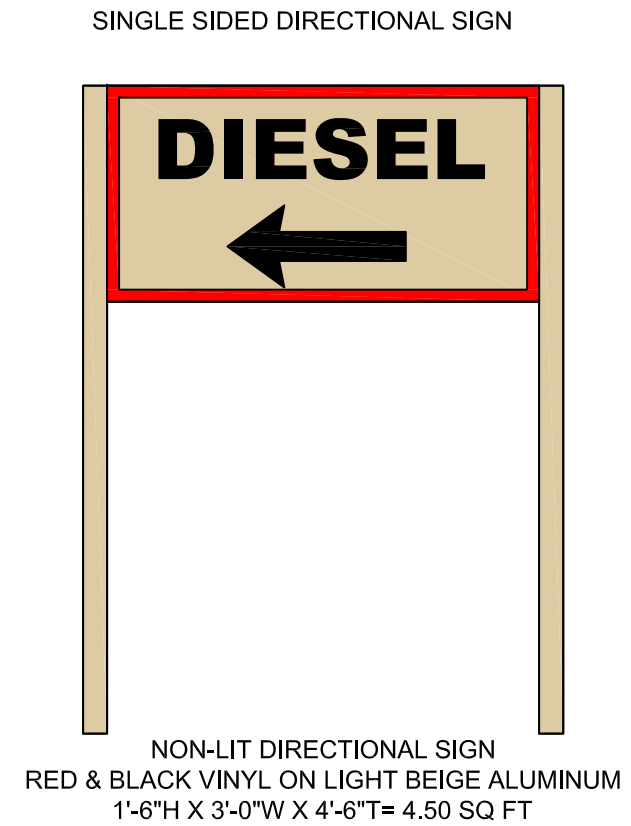
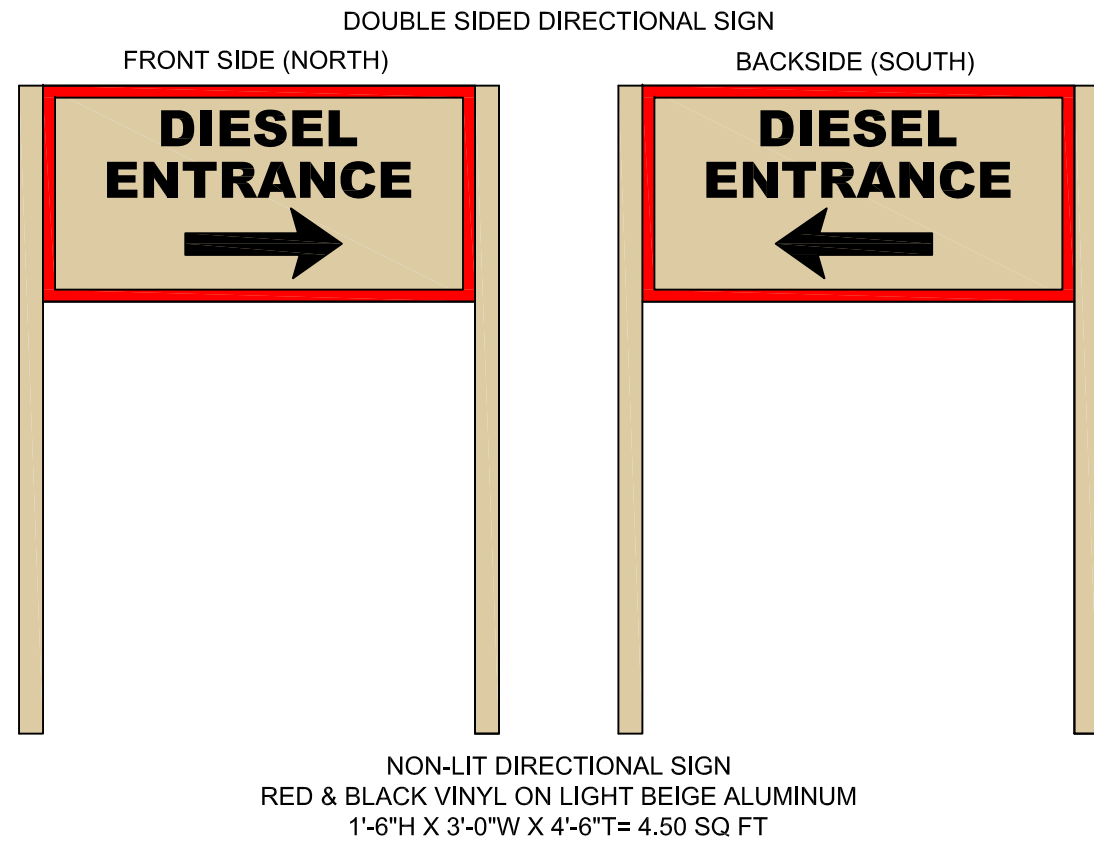


KWIK TRIP, Inc.
P.O. BOX 2107
1626 OAK STREET
LA CROSSE, WI 54602-2107
PH. (608) 781-8988
FAX (608) 781-8960

DIRECTIONAL SIGNAGE
GEN 3 CONVENIENCE STORE #970
WITH 1 BAY CW
2106 S WEST AVE
WAUKESHA, WI

#	DATE	DESCRIPTION
△	2020/04/09	SIGN UPDATE

DRAWN BY: S. WADDELL
SCALE: MULTIPLE
PROJ. NO.: 0001
DATE: 2020-02-25
SHEET: DS1

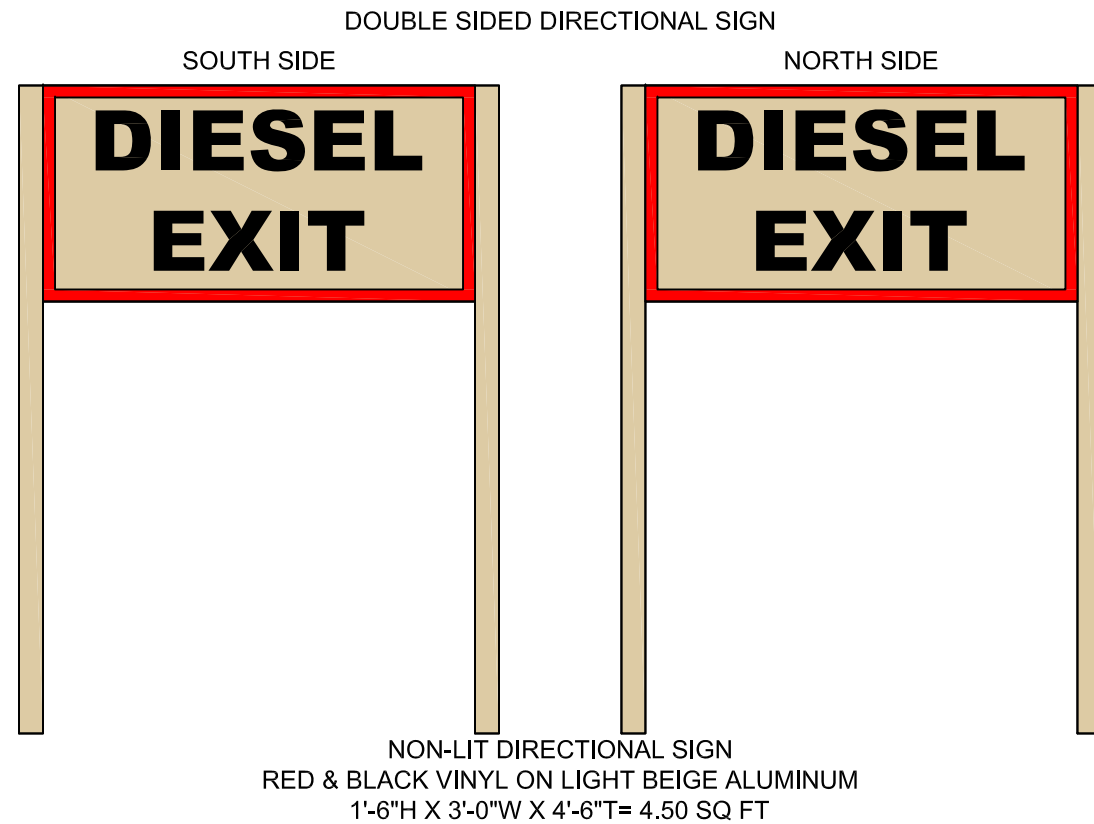


DIRECTIONAL SIGN #12

SCALE: 3/4" = 1'-0"

DIRECTIONAL SIGNS #13 & #14

SCALE: 3/4" = 1'-0"



DIRECTIONAL SIGN #15

SCALE: 3/4" = 1'-0"



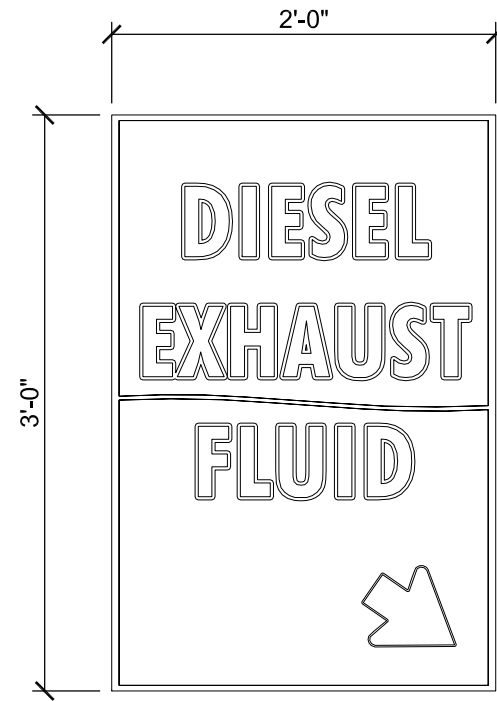
KWIK TRIP, Inc.
P.O. BOX 2107
1626 OAK STREET
LA CROSSE, WI 54602-2107
PH. (608) 781-8988
FAX (608) 781-8960

DIRECTIONAL SIGNAGE
GEN 3 CONVENIENCE STORE #970
WITH 1 BAY CW
2106 S WEST AVE
WAUKESHA, WI

#	DATE	DESCRIPTION
△	2020/04/09	SIGN UPDATE

DRAWN BY: S. WADDELL
SCALE: MULTIPLE
PROJ. NO.: 0001
DATE: 2020-02-25
SHEET: DS2

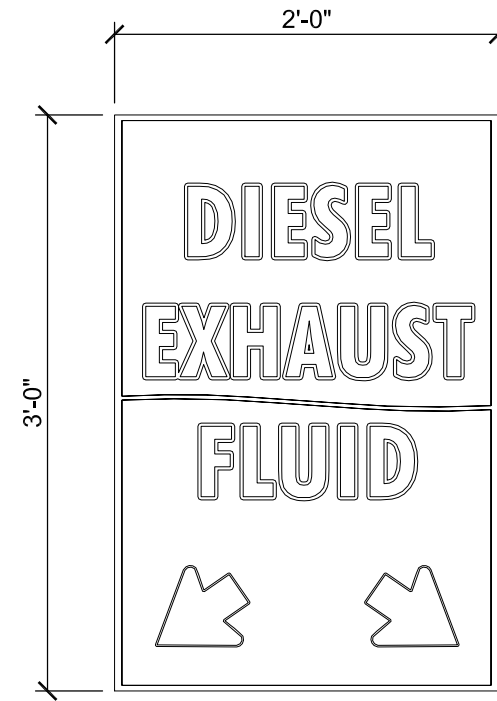
#16 KWIK TRIP FREESTANDING PYLON SIGN
SEE ATTACHMENT FROM LA CROSSE SIGN CO



QTY: 1

DEF SIGN A

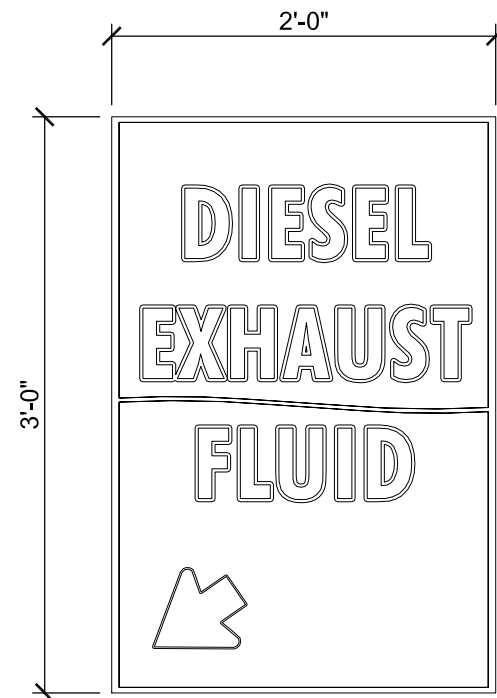
SCALE: 3/4" = 1'-0"



QTY: 2

DEF SIGN B

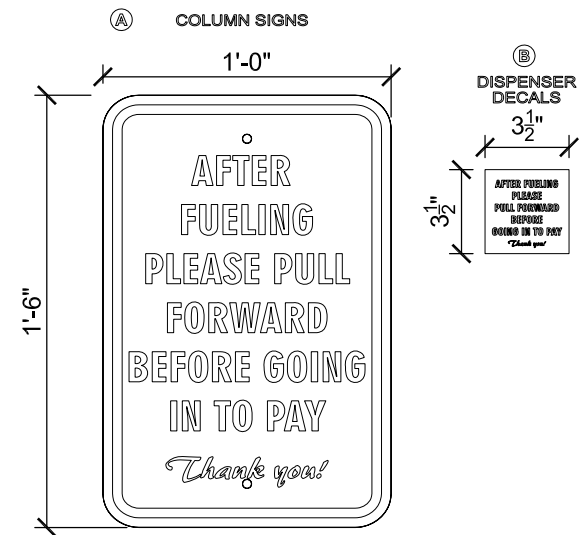
SCALE: 3/4" = 1'-0"



QTY: 1

DEF SIGN C

SCALE: 3/4" = 1'-0"



PULL AHEAD SIGN D

SCALE: 1 1/2" = 1'-0"



KWIK TRIP, Inc.
P.O. BOX 2107
1626 OAK STREET
LA CROSSE, WI 54602-2107
PH. (608) 781-8988
FAX (608) 781-8960

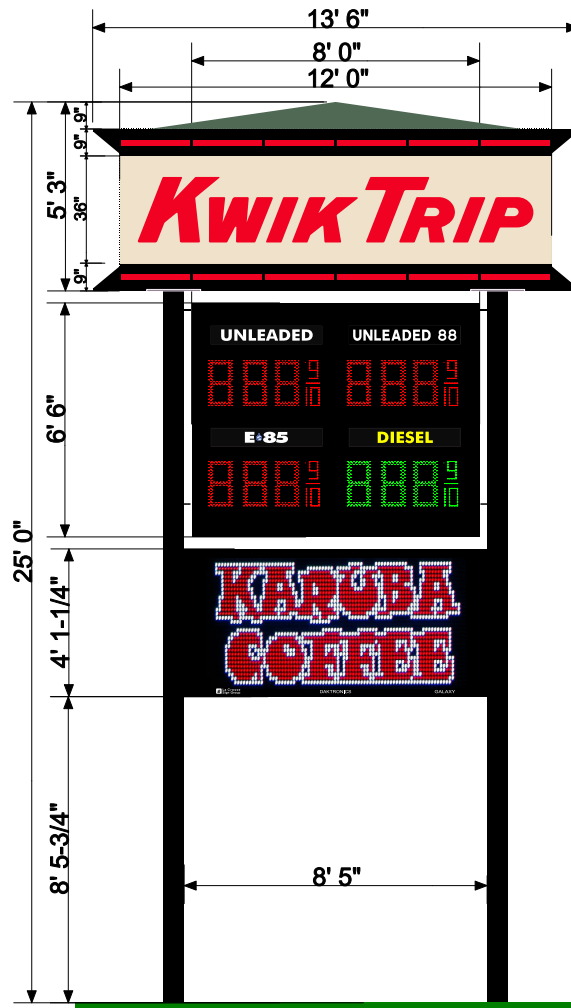
DEF / DSL SIGNAGE
GEN 3 CONVENIENCE STORE #970
WITH 1 BAY CW
2106 S WEST AVE
WAUKESHA, WI

#	DATE	DESCRIPTION
▲	2020/04/09	SIGN UPDATE

DRAWN BY: S. WADDELL
SCALE: MULTIPLE
PROJ. NO.: 0001
DATE: 2020-02-25
SHEET: DEF 1

DOUBLE FACED PYLON

970 Waukesha, WI

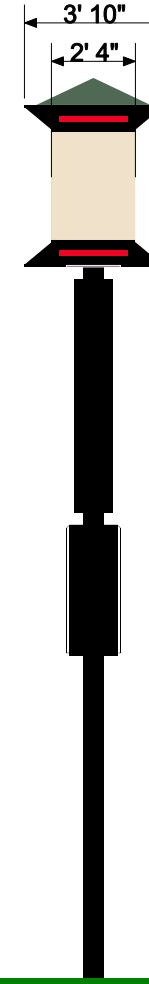


ID Cabinet
3' 0" x 12' 0"
36 sq. ft.

Price Cabinet
FL-3000, 16"
6' 6" x 8' 0"
52 sq. ft.

108x216
10mm RGB
Active SF 25.91
Overall SF 30.57

Total Square Feet
118.57



Approved by: _____ Date: _____ Landlord: _____ Date: _____

This artwork is copyrighted and may not be otherwise used without permission. It is the property of La Crosse Sign Co., Inc., and must be returned to them.

lacrossesign.com

DESIGN

SALES

FILE

COLOR KEY



1450 Oak Forest Drive • Onalaska, WI 54650 • 608-781-1450
2242 Mustang Way • Madison, WI 53718 • 608-222-5353
2502 Melby Street • Eau Claire, WI 54703 • 715-835-6189

Drawing by: Danielle Haldey
Sign Type: Pylon
Date Created: 3/7/2019
Last Modified:
Scale: 3/16" = 1' 0"

Job Name: Kwik Trip
Job Address:
Salesperson: Cindy Bluske
Job Number:

Revision Number:
Job File Location:

- a** NA 208080 Beige
- b** Black S/G paint
- c** #2283 Red Acrylic
- d** White of Acrylic
- e** Red LED
- f** NA 307880 Hemlock Green
- g** Green LED
- h** Black (230-22)
- i** Yellow (230-015)
- j** Blue (230-167)

*COLORS ON SKETCH ARE ONLY A REPRESENTATION. ACTUAL COLOR OF FINISHED PRODUCT MAY DIFFER