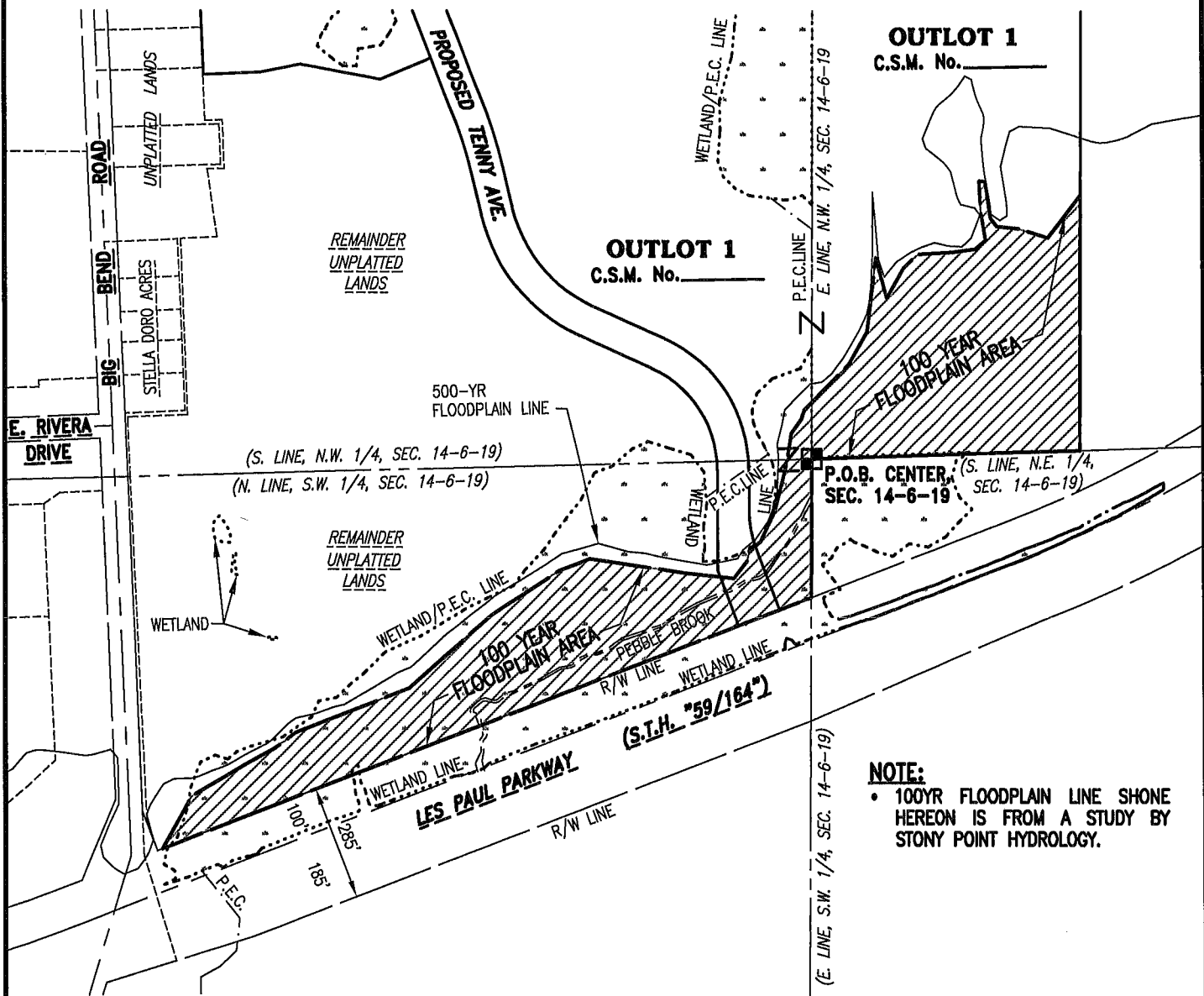


EXHIBIT "A"

100-YR FLOODPLAIN AREA



OUTLOT 1
C.S.M. No. _____

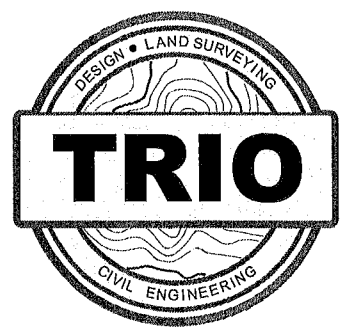
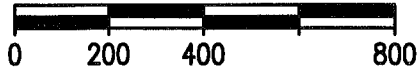
OUTLOT 1
C.S.M. No. _____

P.O.B. CENTER,
SEC. 14-6-19

NOTE:
• 100YR FLOODPLAIN LINE SHONE HEREON IS FROM A STUDY BY STONY POINT HYDROLOGY.



SCALE: 1"=400'



4100 N. CALHOUN ROAD
Suite 300
Brookfield, WI 53005
Phone: (262) 790-1480
Fax: (262) 790-1481

H:\CS00\889\12011-01\Survey\ESMT-EXHIBITS\885DEX_Floodplain.dwg

EXHIBIT "A"

100-YR FLOODPLAIN AREA

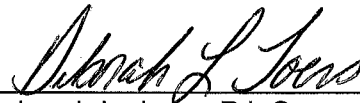
LEGAL DESCRIPTION:

A portion of the 100-year Floodplain line located in a part of the Southwest 1/4, Northwest 1/4 and Southeast 1/4 of Section 14, Town 6 North, Range 19 East, in the City of Waukesha, Waukesha County, Wisconsin, now being more particularly bounded and described as follows:

Beginning at the Center Corner of said Section 14; Thence South 00°21'37" West along the East line of the said Southwest 1/4 of said Section 14, 343.15 feet to a point on the North Right-of-Way line of "Les Paul Parkway" (S.T.H. "59/164"); Thence South 68°59'25" West along said North line, 1738.47 feet to a point; Thence North 29°19'54" East, 148.61 feet to a point; Thence North 59°41'55" East, 161.33 feet to a point; Thence North 61°01'48" East, 77.03 feet to a point; Thence North 53°19'12" East, 63.94 feet to a point; Thence North 68°45'25" East, 305.90 feet to a point; Thence North 48°37'09" East, 273.37 feet to a point; Thence North 57°09'13" East, 204.23 feet to a point; Thence North 69°06'26" East, 81.96 feet to a point; Thence South 81°41'53" East, 242.31 feet to a point; Thence South 83°59'29" East, 121.06 feet to a point; Thence North 38°10'19" East, 54.97 feet to a point; Thence North 12°14'13" East, 33.75 feet to a point; Thence North 61°22'15" East, 28.73 feet to a point; Thence North 25°47'54" East, 84.72 feet to a point; Thence North 14°16'32" East, 119.90 feet to a point; Thence North 09°19'50" East, 78.76 feet to a point; Thence North 35°49'54" East, 42.45 feet to a point; Thence North 18°30'20" East, 24.17 feet to a point; Thence North 44°18'06" East, 157.92 feet to a point; Thence North 30°04'33" East, 92.23 feet to a point; Thence North 06°52'08" East, 184.54 feet to a point; Thence South 15°08'00" East, 102.64 feet to a point; Thence North 30°26'58" East, 85.68 feet to a point; Thence North 48°15'41" East, 50.95 feet to a point; Thence North 86°42'04" East, 84.31 feet to a point; Thence North 82°07'27" East, 58.81 feet to a point; Thence North 50°21'22" East, 34.70 feet to a point; Thence North 09°58'47" West, 72.72 feet to a point; Thence North 03°02'27" West, 74.79 feet to a point; Thence South 86°04'33" East, 15.78 feet to a point; Thence South 08°12'55" East, 91.95 feet to a point; Thence South 38°08'15" East, 25.26 feet to a point; Thence South 83°33'31" East, 53.20 feet to a point; Thence South 73°28'36" East, 77.05 feet to a point; Thence North 37°33'25" East, 133.17 feet to a point; Thence South 00°22'41" West, 631.86 feet to a point on the South line of the Northeast 1/4 of said Section 14; Thence South 88°10'12" West along said South line, 670.28 feet to the point of beginning of this description.

Said area contains 635,226 Square Feet (or 14.5828 Acres) of land, more or less.

Date: 8/26/2019



Deborah L. Joers, P.L.S.
Professional Land Surveyor, S-2132
TRIO ENGINEERING, LLC
4100 N. Calhoun Road, Suite 300
Brookfield, WI 53005
Phone: (262)790-1480 Fax: (262)790-1481