

CALL DIGGERS HOTLINE
811 or 1-800-224-4811
FOR A LIST OF PARTICIPATING
UTILITIES UNDERGROUND
PARTICIPANTS UNDERGROUND
PARTICIPANTS UNDERGROUND
PARTICIPANTS UNDERGROUND
NOTICE BEFORE YOU DIG/AWAYE

CARBON / F New, Inc.
www.carbonfwm.com
128 Sunset Drive
Walkerston, Indiana 46374
Ph: 574.386.3400

6140 Cottonwood Road
Suite A
Richton, Wisconsin 53719
Ph: 608.693.2955

6605 Seger Road
Suite A
Monroe, Illinois 60049
Ph: 708.542.3450

S88°59'52"W 328.41'

Economy Prairie Seed Mix

Botanical Name	Common Name	Quinces/acre
Permanent Grasses:		
<i>Andropogon gerardii</i>	Big Bluestem	16.00
<i>Bouteloua curtipendula</i>	Side-Oats Gramma	18.00
<i>Carex bicknelli</i> / <i>Carex breweri</i>	Prairie Sedge Mix	1.00
<i>Carex canadensis</i>	Canada Sedge	1.00
<i>Parthenocissus vitacea</i>	Little Bluestem	24.00
<i>Schizanthus scaberrimus</i>	Indian Grass	18.00
Total		95.50

Temporary Cover:	Common Name	Quinces/acre
<i>Avena sativa</i>	Common Oat	360.00
<i>Lolium multiflorum</i>	Annual Ryegrass	100.00
Total		460.00

Foibles:	Common Name	Quinces/acre
<i>Actinopus symosa</i>	Common Milkweed	0.50
<i>Aster laevis</i>	Butterfly Milkweed	1.00
<i>Aster novae-angliae</i>	Smooth Blue Aster	0.25
<i>Oenothera bioculata</i>	New England Aster	0.75
<i>Carex obovata</i>	Partridge Pea	12.00
<i>Carex pensilvanica</i>	Sand Coreopsis	5.00
<i>Helianthus annuus</i>	Field Sunflower	0.25
<i>Lupinus perennis</i>	Wild Lupine	0.25
<i>Monarda fistulosa</i>	Wild Bergamot	0.25
<i>Pyrothrum tenuifolium</i>	Common Mountain Mint	0.50
<i>Rudbeckia hirta</i>	Yellow Coneflower	3.50
<i>Rudbeckia hirta</i>	Black Eyed Susan	8.00
Total		40.00

Annual/Perennial Fodds Mix

Approximate area of coverage:
Total area (SF) of coverage of sloped Native Prairie areas: 33,950
Total acreage of coverage of sloped Native Prairie areas: 0.78

NATIVE PRAIRIE SEED MIX

Stormwater Seed Mix
For Use on Stormwater Management Ponds (SWP) Side Slopes to Normal Water Line (NWL)

Botanical Name	Common Name	Quinces/acre
Permanent Grasses/Sedges/Rushes:		
<i>Carex crinitella</i>	Central Oval Sedge	1.00
<i>Carex lurida</i>	Bottlebrush Sedge	2.00
<i>Carex waltkeana</i>	Brown Fox Sedge	6.00
<i>Elymus virginicus</i>	Virginia Wild Rye	12.00
<i>Glyceria striata</i>	Fowl Manna Grass	1.25
<i>Juncus effusus</i>	Common Rush	1.00
<i>Juncus tenuis</i>	Torey's Rush	0.25
<i>Pennisetum purpureum</i>	Crabgrass	8.00
<i>Panicum capillare</i>	Dark Green Rush	1.00
<i>Scirpus americanus</i>	Wool Grass	0.50
<i>Scirpus americanus</i>	River Bulrush	0.25
<i>Scirpus flaccidus</i>	Great Bulrush	6.00
Total		40.25

Temporary Cover:	Common Name	Quinces/acre
<i>Avena sativa</i>	Common Oat	360.00
<i>Lolium multiflorum</i>	Annual Ryegrass	100.00
Total		460.00

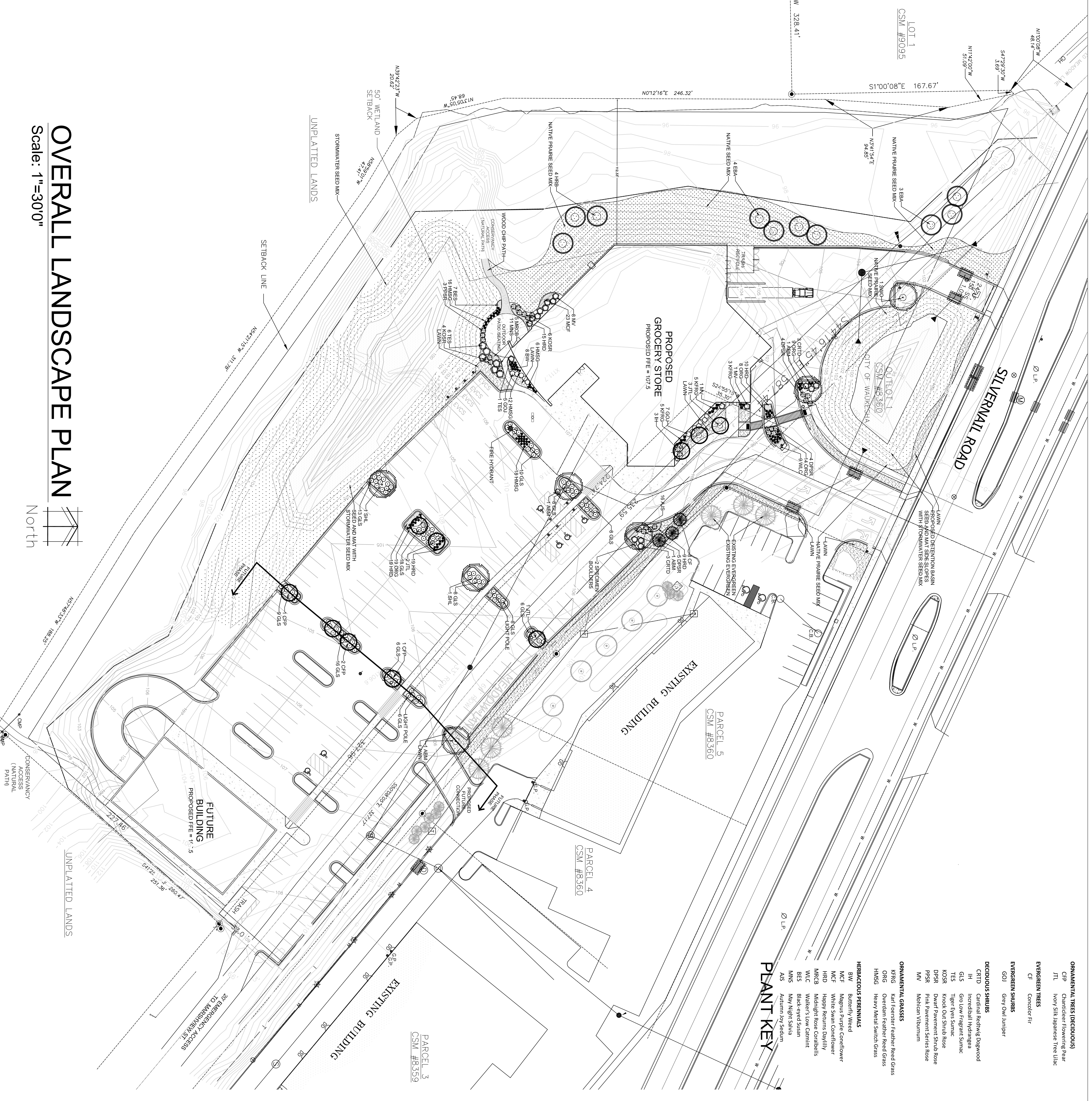
Foibles:	Common Name	Quinces/acre
<i>Alisma spp.</i>	Water Plantain (Various Mix)	4.25
<i>Actinopus incornata</i>	Swamp Milkweed	1.50
<i>Bidens spp.</i>	Bidens (Various Mix)	2.00
<i>Helianthus autumnale</i>	Sneezeweed	2.00
<i>Lycopus americanus</i>	Common Water Horehound	0.25
<i>Lythrum hysserifolium</i>	Common Water Hyssop	0.25
<i>Penstemon angustifolius</i>	Blue Penstemon	0.50
<i>Polygonum pennsylvanicum</i>	Water Smartweed	4.00
<i>Rudbeckia autumnalis</i>	Sweet Black-Eyed Susan	1.00
<i>Sagittaria arifolia</i>	Common Arrowhead	1.00
<i>Senna hebecarpa</i>	Wild Senna	1.00
<i>Thalictrum dasycarpum</i>	Purple Meadow Rue	2.00
Total		20.50

Approximate area of coverage:
Total area (SF) of coverage including infiltration ponds: 25,056
Total acreage of coverage including infiltration ponds: 0.58

STORMWATER SEED MIX

OVERALL LANDSCAPE PLAN

Scale: 1"=300"



PLANT KEY

ORNAMENTAL TREES (DECIDUOUS)	CPM Chamlier Flowering Pear
	JTL Ivory Silk Japanese Tree Lilac
EVERGREEN TREES	CF Consolor Fir
EVERGREEN SHRUBS	GOI Grey Owl Juniper
DECIDUOUS SHRUBS	CRTO Cardinal Redwing Dogwood
	IH Incrediball Hydrangea
	GLS Gro-Low Fragrant Sumac
	TES Tiger Eyes Sumac
	KOSR Knock Out Shrub Rose
	DPSS Dwarf Pavement Shrub Rose
	PPSR Pink Pavement Shrub Rose
	MW Modern Viburnum
ORNAMENTAL GRASSES	KFG Karl Forester Feather Reed Grass
	ONG Overdam Feather Reed Grass
	HMSG Heavy Metal Switch Grass
HERBACEOUS PERENNIALS	BW Siberian Weed
	WCF Wagner Purple Coneflower
	HCF Happy Returns Coneflower
	MFG Mandy's Revenge Daylily
	WIC Walker's Low Coreopsis
	BSS Black-eyed Susan
	MNS Mauve Night Sialia
	AS Autumn Ice Sedum

DESIGN GROUP
BRIOHN DESIGN GROUP
1000 W. WISCONSIN AVE. SUITE 1000
MILWAUKEE, WI 53233
(414) 224-8800 FAX (414) 224-8801

BRIOHN

LANDSCAPE PLAN

SHEET TITLE

NEW BUILDING FOR:
GOOD HARVEST MARKET
SILVERNAIL ROAD
WAUKESHA, WI

DATE: 05-29-14
CHECKED: WDF
DRAWN: MWF
JOB: 2694

L1.0