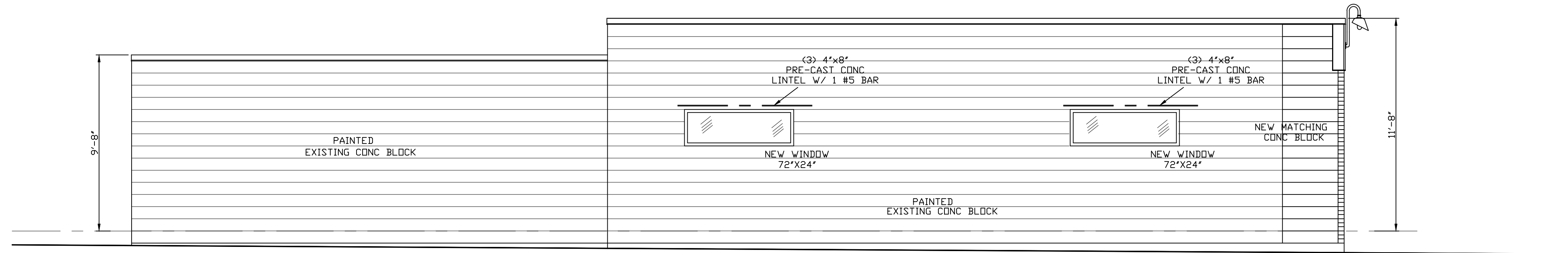
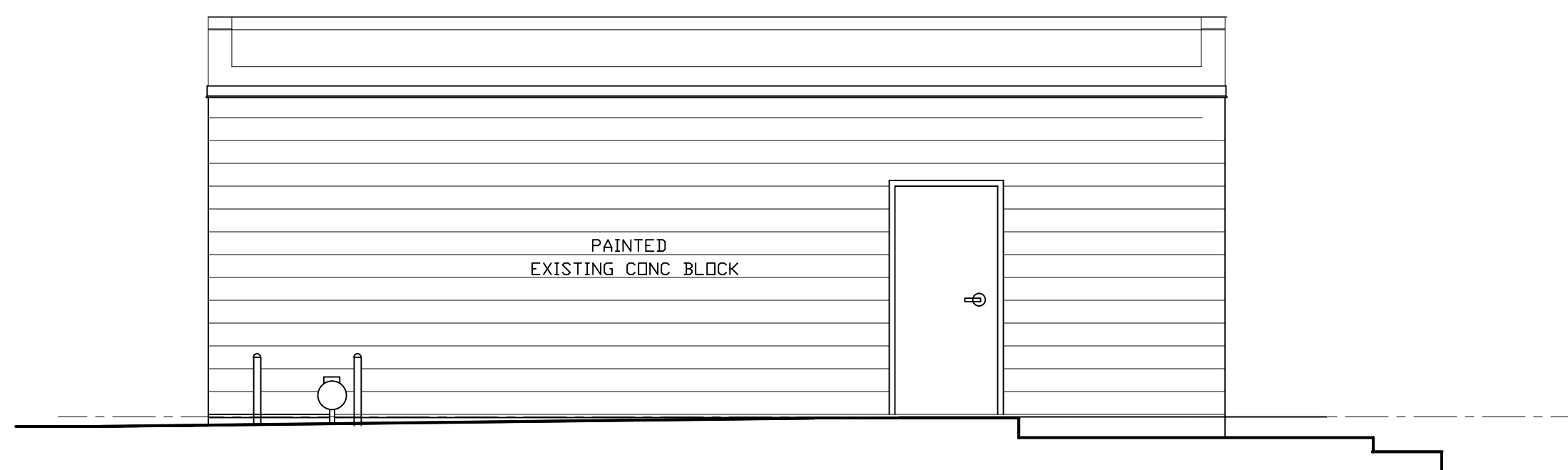


WEST ELEVATION
1/4"=1'-0"



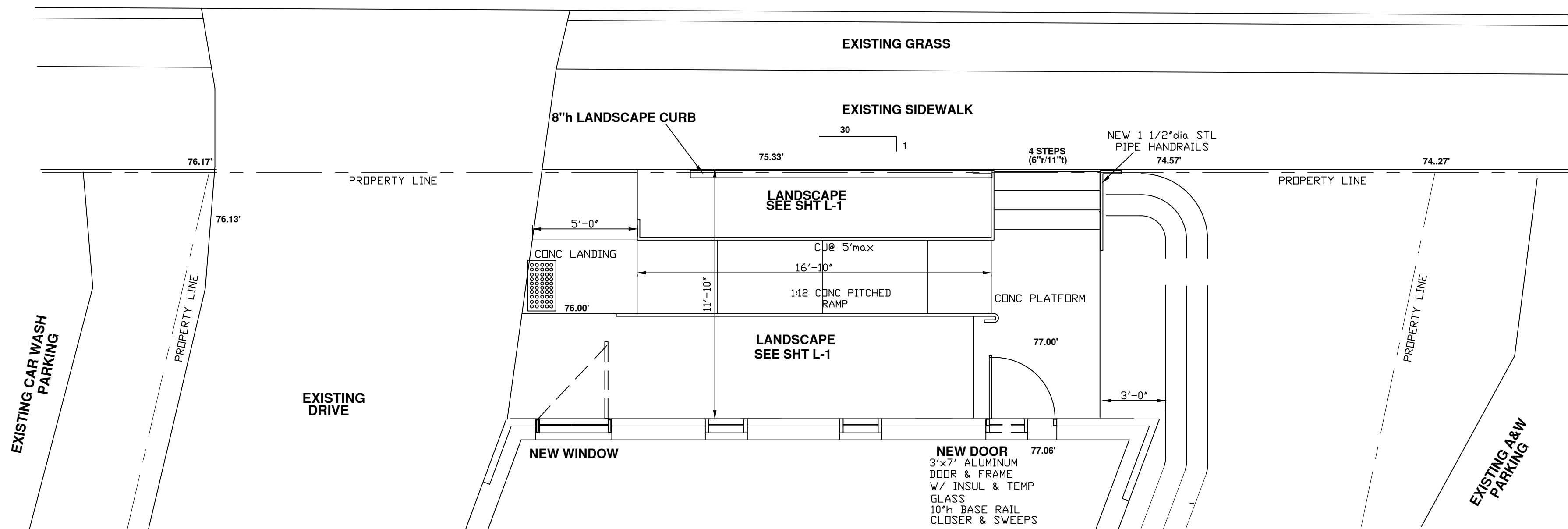
EAST ELEVATION
1/4"=1'-0"



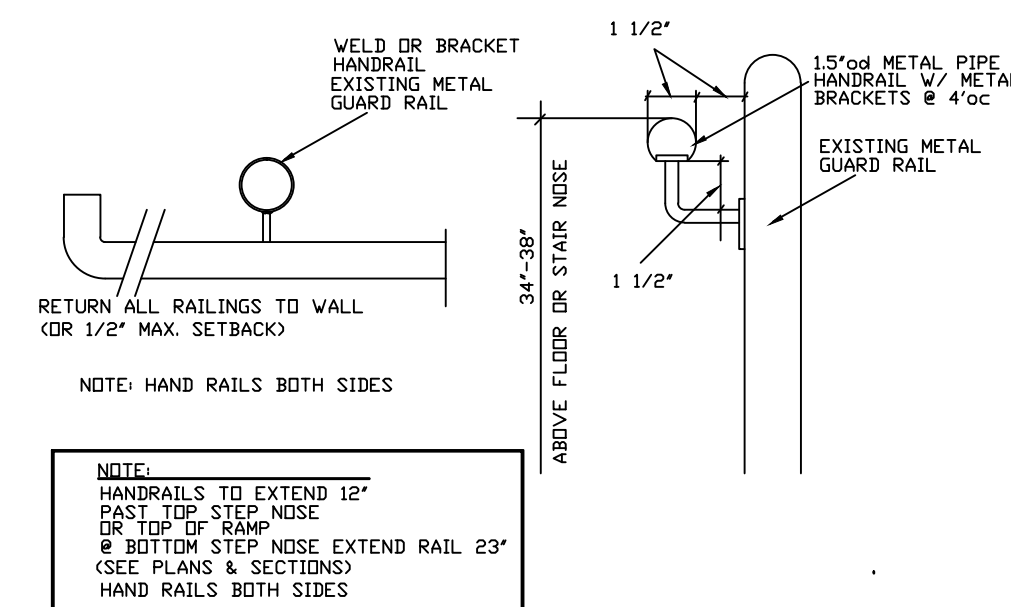
SOUTH ELEVATION
1/4"=1'-0"



NORTH ELEVATION
NTS



PARTIAL FLOOR & SITE PLAN
1/4"=1'-0"



HANDRAIL DETAILS
NTS

REVISIONS

architect
Peine Design, LLC
8023 Currie Avenue
Wauwatosa, WI 53213
PH: (414) 476-3377
FX: (414) 259-9203
village@execpc.com

contractor
FORD CONSTRUCTION COMPANY, INC.
1419 POPLAR DRIVE
WAUKESHA, WI 53188
PH: (262) 896-9370
FX: (262) 896-9371
fordcon@tds.net

Billy D's
1313 Arcadia Avenue
Waukesha, WI 53186

Site Alterations
1313 Arcadia Avenue Waukesha, WI 53186
ENLARGED PARTIAL SITE PLAN & ELEVATIONS

17307

8/28/17

A-1

scheme b