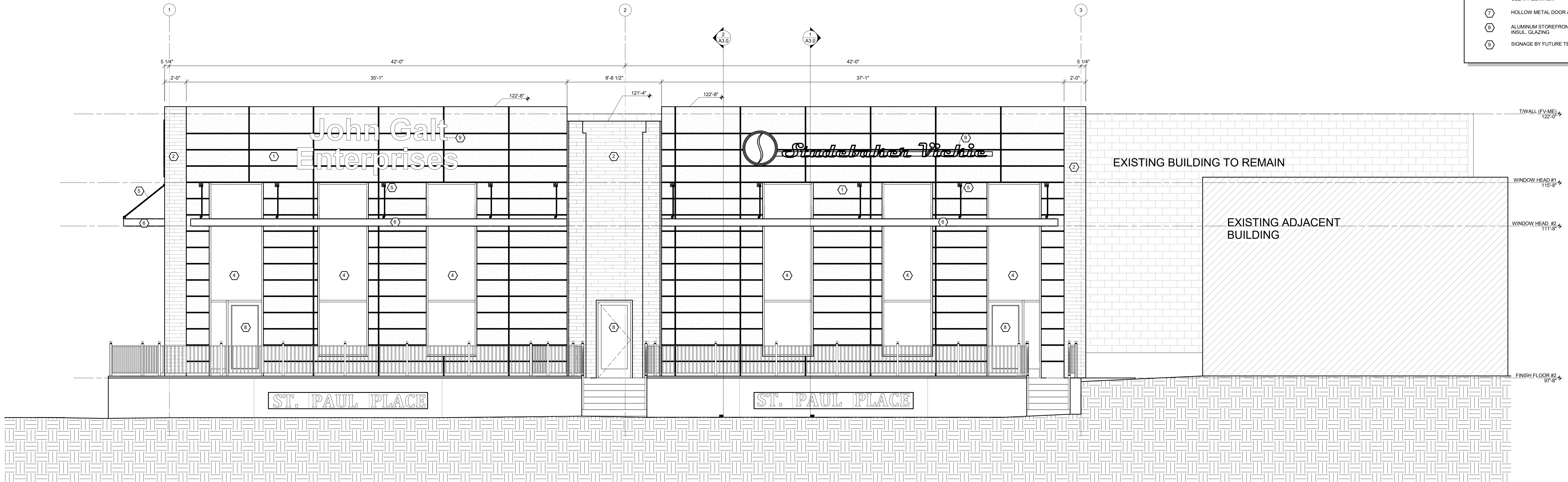


| KEY NOTES | |
|-----------|---|
| ① | PREFINISHED FIBER CEMENT PANEL SIDING BY NICHIA |
| ② | IPE WOOD SHIP LAP PLANK SIDING WITH OILED FINISH |
| ③ | PREFINISHED STANDING SEAM METAL SIDING WITH CONCEALED FASTENERS AND SNAP LOCK TYP SEAMS |
| ④ | PREFINISHED ALUMINUM STOREFRONT FRAMING w/ 1" INSUL. GLAZING - HEAD HEIGHT 111'-8" |
| ⑤ | SUNSHADE SUPPORT BY SUNSHADE MANUFACTURER |
| ⑥ | PREFINISHED ALUMINUM SUNSHADE, FINISH TO BE CLEAR ALUMINUM |
| ⑦ | HOLLOW METAL DOOR & FRAME |
| ⑧ | ALUMINUM STOREFRONT DOOR & FRAME w/ 1" INSUL. GLAZING |
| ⑨ | SIGNAGE BY FUTURE TENANTS |

| PROJECT INFORMATION | |
|---------------------|---------|
| PROJECT NUMBER | 1403810 |



EAST ELEVATION
 SCALE: 1/4" = 1'-0"

ST. PAUL PLACE PARTNERS, LLC
222 WEST SAINT PAUL AVE.
 WAUKESHA, WI • 53188

PROFESSIONAL SEAL

SHEET DATES

SHEET ISSUE DEC. 6, 2018

REVISIONS

| NO. | DESCRIPTION |
|-----|-------------|
| | |
| | |
| | |
| | |
| | |
| | |
| | |
| | |
| | |

SHEET INFORMATION

EXTERIOR ELEVATIONS

SHEET NUMBER

A2.1