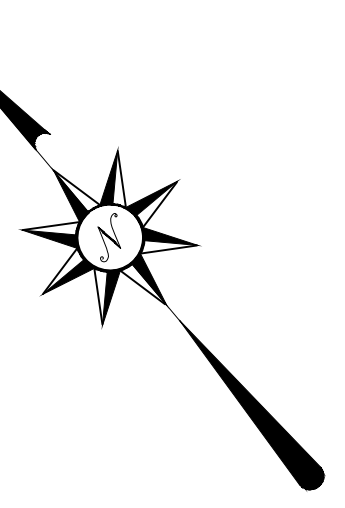
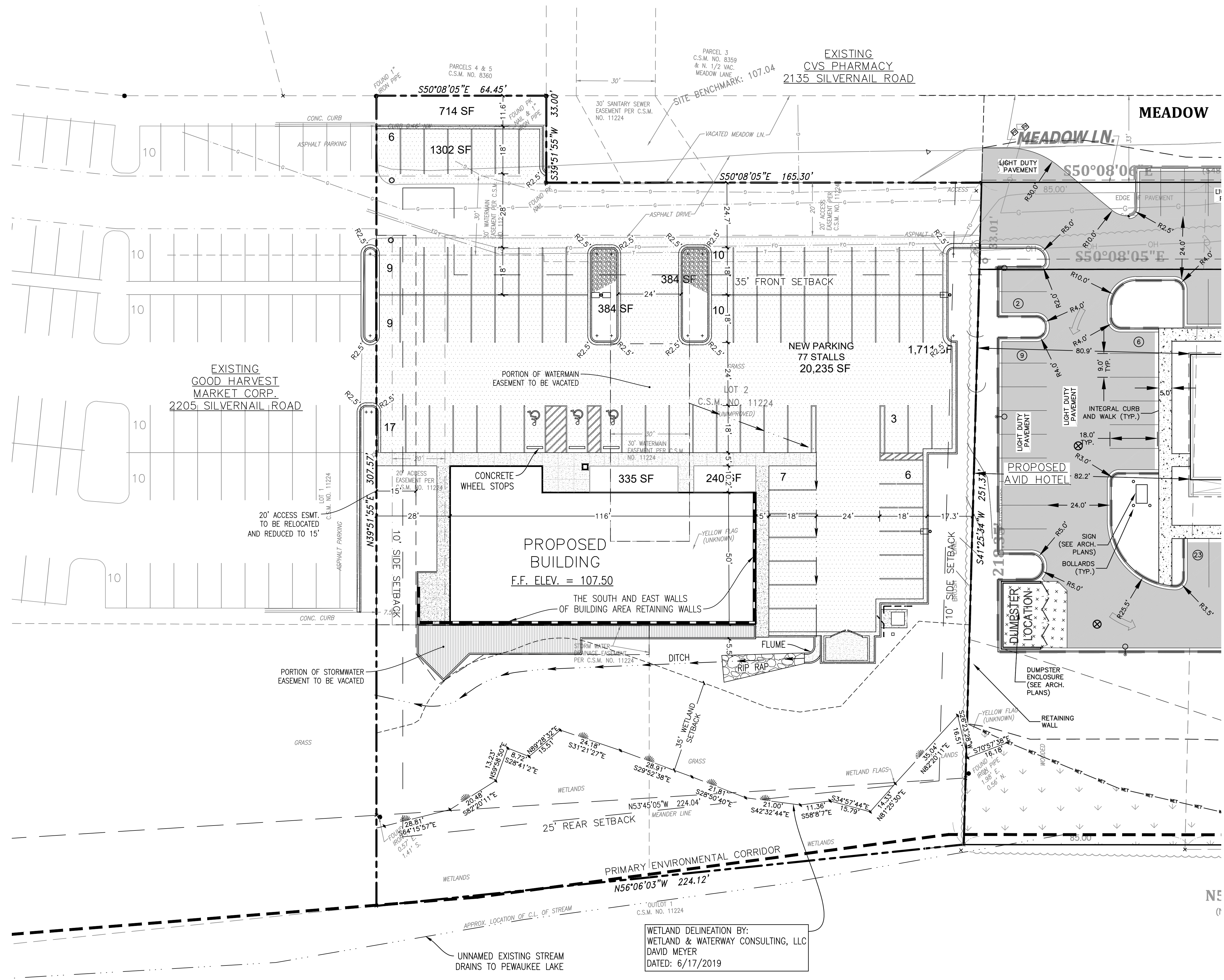


**PRELIMINARY  
NOT FOR CONSTRUCTION**



**SITE STATISTICS**

LOT AREA = 61,594 ft<sup>2</sup> (1.414 Ac.)  
 WETLAND AREA = 8,122 ft<sup>2</sup> (0.186 Ac.)  
 IMPERVIOUS AREA = 35,538 ft<sup>2</sup> (0.816 Ac.)  
 GREEN SPACE = 17,934 ft<sup>2</sup> (29%)

**LEGEND**

**PROPOSED PAVEMENT**  
 1 1/2" HMA SURFACE COURSE  
 2 1/2" HMA BINDER COURSE  
 11" - 1 1/4" CRUSHED STONE (1.B.)

**PROPOSED CONCRETE PAVEMENT**  
 6" CONC. PAVEMENT W/ 6x6-W2.9xW2.9 W.W.F.  
 6" - 1 1/4" CRUSHED STONE BASE

**NOTE:**

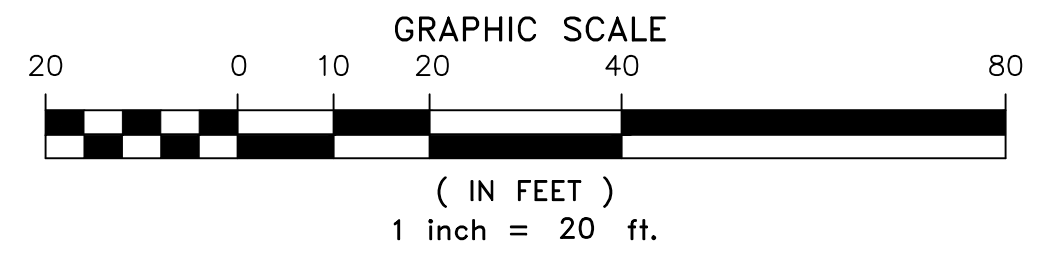
1. ALL SIDEWALK THAT TOUCHES THE ASPHALT PAVEMENT SHALL BE "CONCRETE SIDEWALK WITH INTEGRAL CURB."

DATE	DESCRIPTION
X-XX-XX	

**Site Engineering Services**  
 2920 Oakwood Road  
 5th Floor  
 262-167-1490 office  
 marty.warden@att.net email  
 Martin D. Warden, PE  
 Civil Engineer/Consultant

**SITE PLAN**  
 for  
**Harvest Square**  
 2201 Silvernail Road  
 City of Waukesha, Waukesha County, Wisconsin

SCALE: 1"=20'
PROJECT NO. 19002
DATE: 7/29/2019
SHEET: 2 of 8
SHEET NUMBER
CE-2



**PRELIMINARY  
NOT FOR CONSTRUCTION**

**DIGGERS HOTLINE**  
 Toll Free (800) 242-8511  
 Milwaukee Area (414) 259-1181  
 Hearing Impaired TDD (800) 542-2289  
 www.DiggersHotline.com