

1 FLOOR PLAN  
A1.0 1/8" = 1'-0"

LEGEND & NOTES

SYMBOL	DESCRIPTION	SYMBOL	DESCRIPTION
100	ROOM NUMBER	HT	EXT. EMERGENCY EGRESS LIGHTING
101	DOOR NUMBER	INT	EMERGENCY EGRESS LIGHTING
102	WINDOW NUMBER	FE	FIRE EXTINGUISHERS
103	EXIT LIGHTS		

ROOM FINISH SCHEDULE

NO.	ROOM NAME	FLOOR	BASE	NORTH	EAST	SOUTH	WEST	MAT.	HT.	REMARKS
100	WAREHOUSE	SC-1	NONE	EX ST	EX ST	EX ST	EX ST	EX ST	EX ST	VARIABLES
101	WAREHOUSE	SC-1	NONE	EX ST	EX ST	EX ST	EX ST	EX ST	EX ST	VARIABLES

MATERIALS LEGEND

CODE	PRODUCT	MANUFACTURER
PNT-1	PAINT	SW OR EQUAL
EX ST	EXPOSED STRUCT. NOT PAINTED	
LINER PNL	PREFINISHED STEEL LINER PANEL	
SC-1	SEALED CONCRETE	CURE & SEAL

DOOR & FRAME SCHEDULE

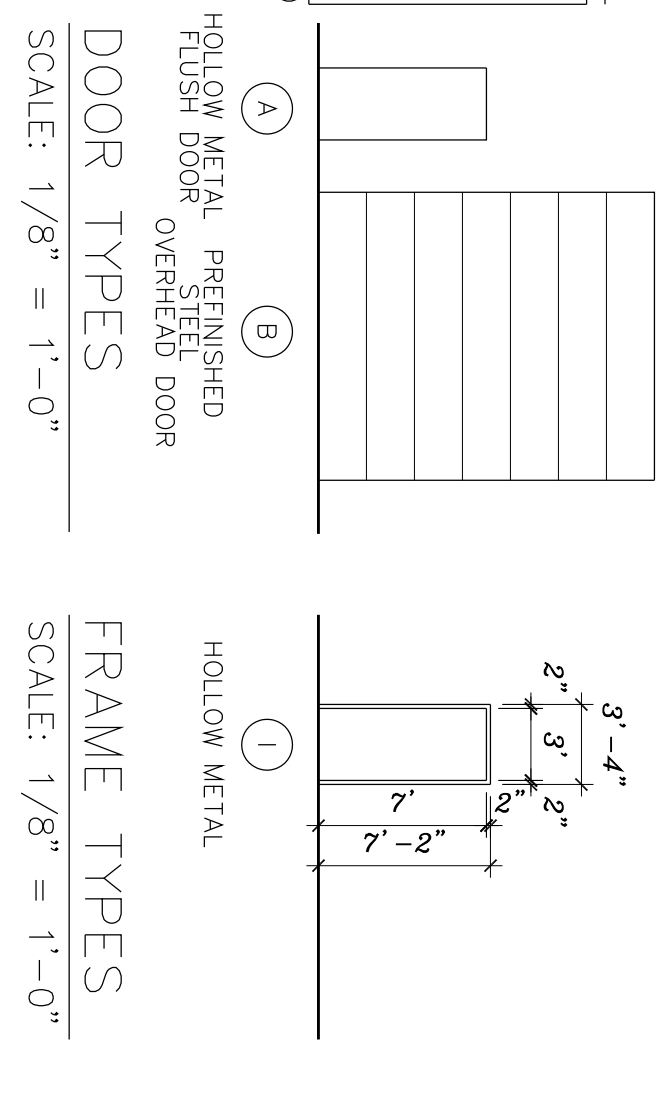
DR.	NO.	SIZE	DOOR	TYPE MATERIAL	FIN.	LITE	FRAME	LITE TYPE MATERIAL	FIN.	LITE HARDWARE	COMMENTS	LABEL
	100	3'-0" X 7'-0"	A	HOLLOW METAL	PNT-1	I	HOLLOW MTL		PNT-1	1.2,5,11,12,14,17		
	100A	12'X14'	B	STEEL	PREFINISHED				PREFINISHED			
	100B	12'X14'	B	STEEL	PREFINISHED				PREFINISHED			
	100C	12'X14'	B	STEEL	PREFINISHED				PREFINISHED			
	101	12'X14'	B	STEEL	PREFINISHED				PREFINISHED			
	101A	3'-0" X 7'-0"	A	HOLLOW METAL	PNT-1	I	HOLLOW MTL		PNT-1	1.2,5,11,12,14,17		
	101B	3'-0" X 7'-0"	A	HOLLOW METAL	PNT-1	I	HOLLOW MTL		PNT-1	1.3,4,11,12,14,17		
	101C	3'-0" X 7'-0"	A	HOLLOW METAL	PNT-1	I	HOLLOW MTL		PNT-1	1.3,4,11,12,14,17		

NOTE: ALL KEYS TO LOCKABLE AREAS SHOULD ALSO OPEN THE MAIN ENTRANCE DOORS.

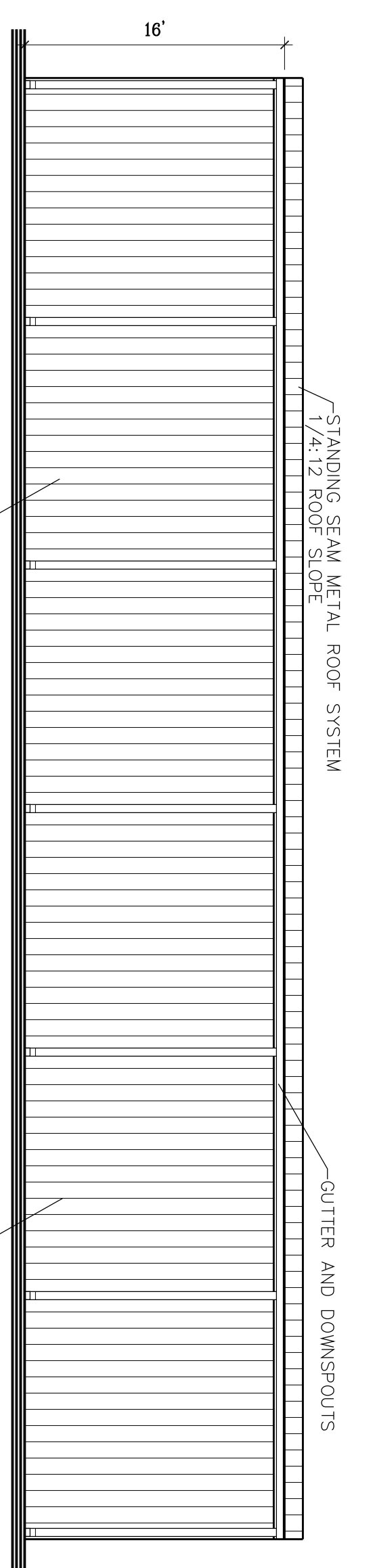
HARDWARE

- 1 CLOSER
- 2 ENTRANCE LOCKSET
- 3 PASSAGE SET
- 4 WALL BUMPER GUARD
- 5 ALUMINUM THRESHOLD
- 6 STORAGE ROOM LOCKSET
- 7 PRINCY SET
- 8 PUSH / PULL (AS APPROPRIATE)
- 9 THUMB-TURN
- 10 DEAD BOLT
- 11 WEATHERSTRIPPING
- 12 SWEEP
- 13 PRINC HARDWARE
- 14 RICK PLATE (FINISH TO MATCH HARDWARE)
- 15 OFFICE LOCKSET
- 16 ELECTRIC OPENER
- 17 HOLD-OPEN W/SAFETY RELEASE

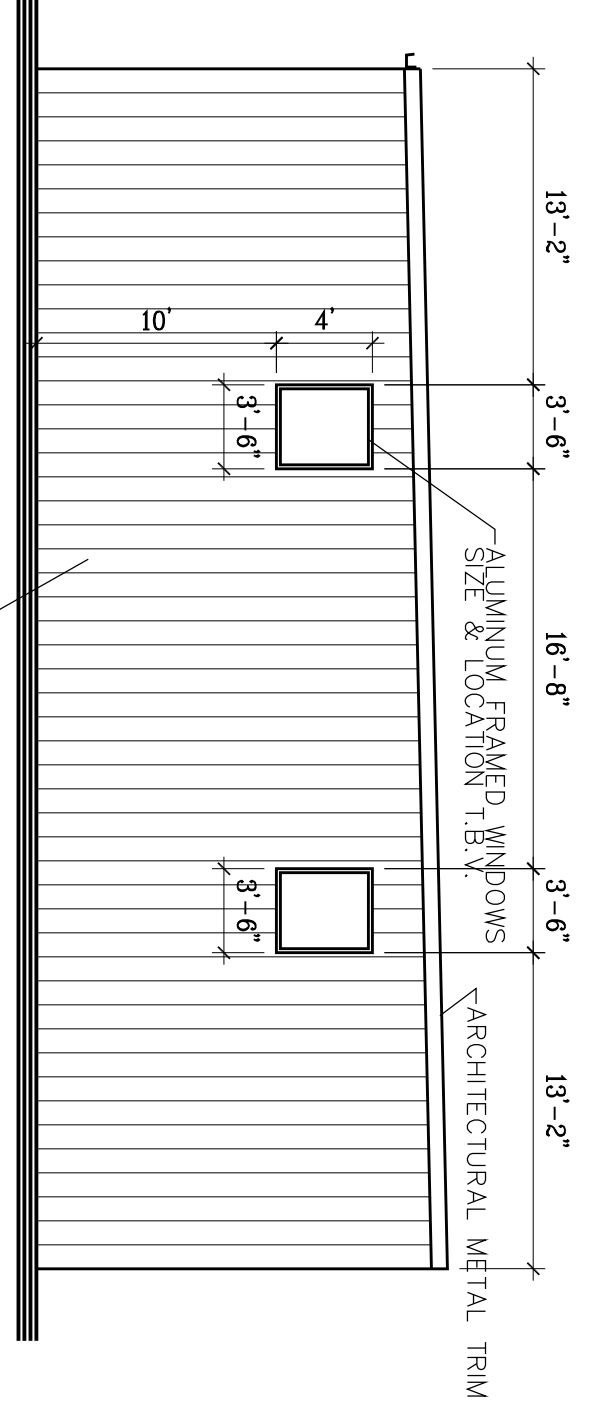
NOTE: ALL DOOR HARDWARE TO BE A.D.A. COMPLIANT  
NOTE: ALL EXTERIOR DOORS TO RECEIVE WEATHERSTRIPPING AND INSULATION



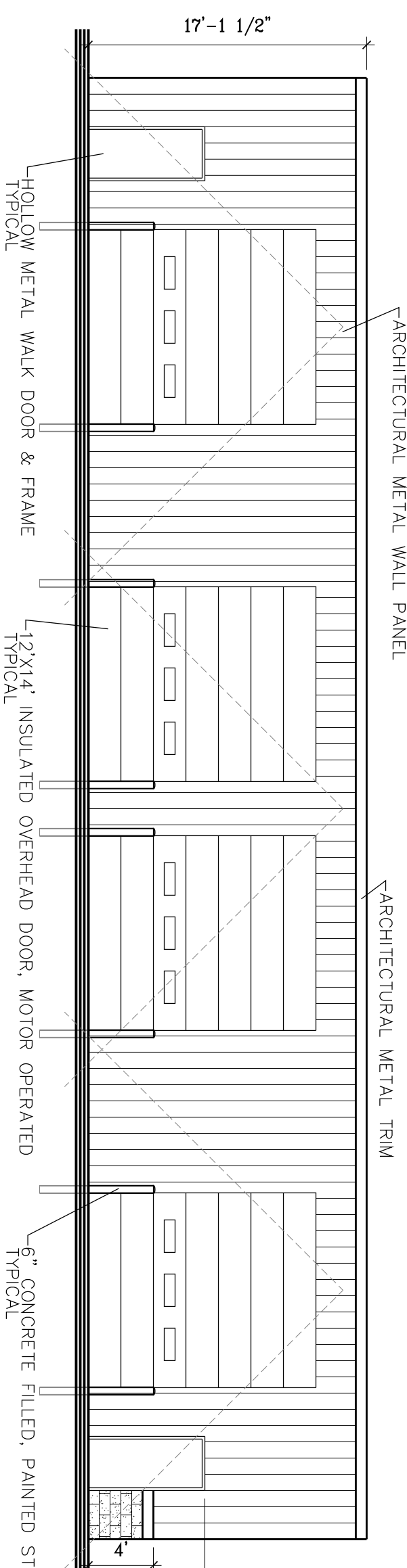
DOOR TYPES SCALE: 1/8" = 1'-0"  
FRAME TYPES SCALE: 1/8" = 1'-0"



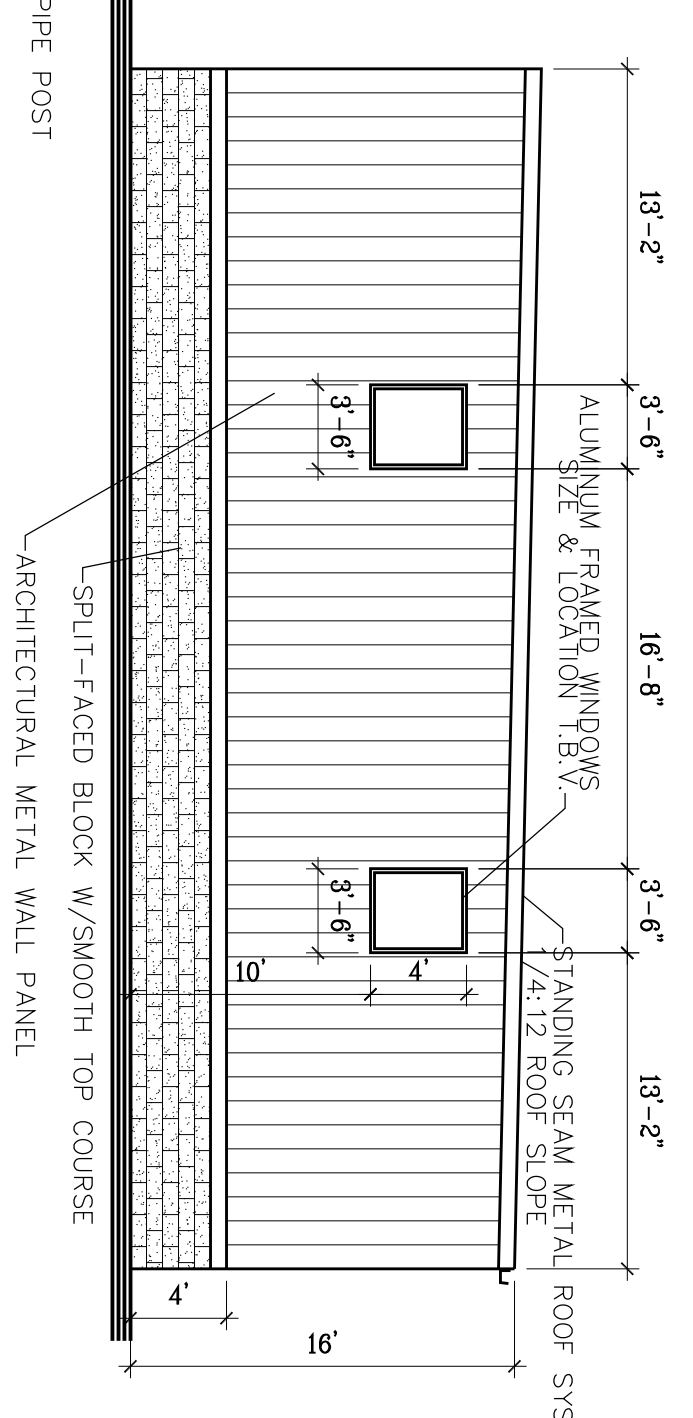
2 WEST ELEVATION  
A1.0 1/8" = 1'-0"



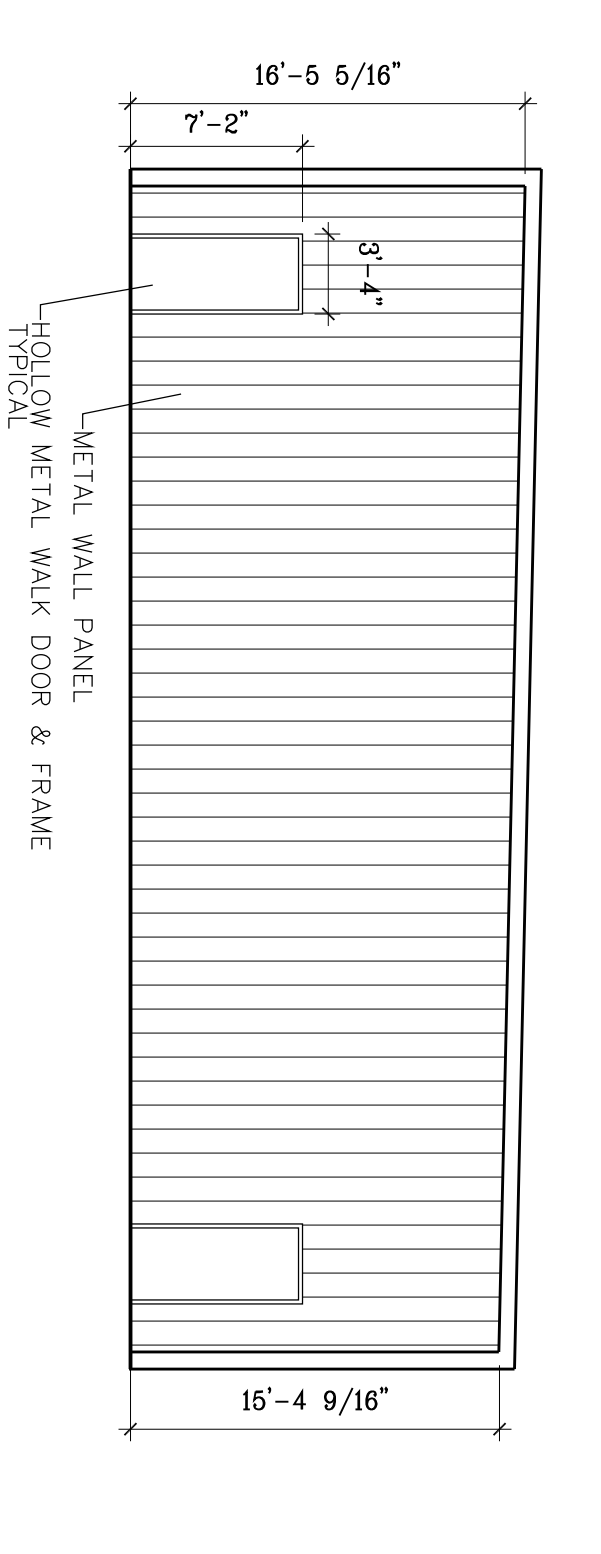
3 SOUTH ELEVATION  
A1.0 1/8" = 1'-0"



4 EAST ELEVATION  
A1.0 1/8" = 1'-0"



5 NORTH ELEVATION  
A1.0 1/8" = 1'-0"



6 INTERIOR ELEVATION  
A1.0 1/8" = 1'-0"

THIS DOCUMENT AND THE INFORMATION HEREWITH IS THE EXCLUSIVE PROPERTY OF OLIVER CONSTRUCTION COMPANY. UNAUTHORIZED USE WILL BE PROSECUTED UNDER SECTION 943.205 OF THE WISCONSIN STATUTES AND IF CONVICTED, THE VIOLATOR SHALL BE SUBJECT TO A FINE NOT TO EXCEED \$10,000.00 AND/OR IMPRISONMENT NOT TO EXCEED TWO YEARS

<p>1770 EXECUTIVE DRIVE OCONOMOWOC, WI 53066 PHONE: (262) 567-6677 FAX: (262) 567-4676</p>	<p>PROJECT TITLE</p> <p>PROPOSED BUILDING FOR: <b>PORTA-PAINTING, LLC</b></p> <p>313 TRAVIS LN WAUKESHA, WISCONSIN 53189</p>	<p>PROJECT INFORMATION</p> <p>PROJECT NO. : DATE : 06/20/18 DRAWN BY : RAB SCALE : AS NOTED SHEET TITLE : FLOOR PLAN &amp; ELEVATIONS</p>	<p>REVISIONS</p> <table border="1"> <tr> <td>1</td> <td></td> <td></td> </tr> </table>	1		
	1					
<p>A1.0</p>						