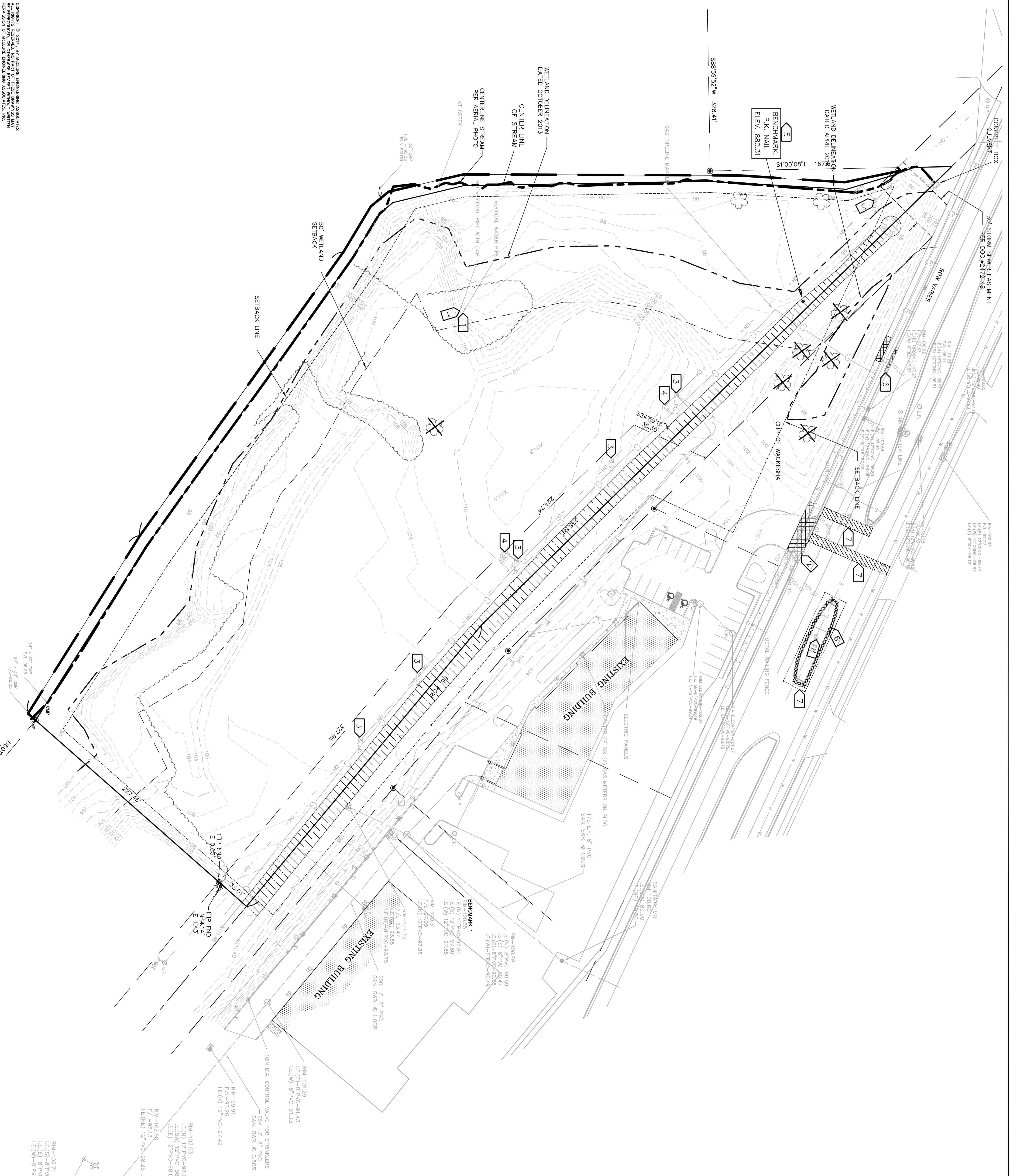


REPORT IS ONLY FOR THE SPECIFIC PROJECT AND SITE. ALL RIGHTS RESERVED. NO PART OF THESE DRAWINGS MAY BE REPRODUCED OR TRANSMITTED IN ANY FORM OR BY ANY MEANS, ELECTRONIC OR MECHANICAL, WITHOUT PERMISSION OF THE ENGINEERING ASSOCIATES, INC.



DEMOLITION NOTES

1. CALL "DIGGERS HOT LINE" @ 1-800-242-8811 72 HOURS PRIOR TO PERFORMING ANY EXCAVATION WORK.
2. FIELD VERIFY THE LOCATIONS OF ALL UTILITIES IMPACTED BY CONSTRUCTION.
3. ALL TREES, SHRUBS, BRUSH AND TREE STUMPS WITHIN CONTRACT LIMITS SHALL BE COMPLETELY REMOVED.
4. PROTECT ALL VEGETATION BEYOND CONSTRUCTION LIMITS.
5. PROVIDE TRAFFIC CONTROL IN ACCORDANCE WITH THE WISCONSIN MANUAL ON UNIFORM TRAFFIC CONTROL DEVICES AND THE WISCONSIN DEPARTMENT OF TRANSPORTATION REQUIREMENTS AT ALL TIMES THAT CONSTRUCTION ACTIVITY DISRUPTS TRAFFIC ON PUBLIC ROADWAYS.
6. ABANDON VERTICAL PIPES NOTED ON SITE SURVEY. CHECK DEPTH WITH PROBE. IF WATER TABLE PRESENT IN PIPE, ABANDON PER WDMR WELL ABANDONMENT REQUIREMENTS.
7. REMOVE CONCRETE APRON AND SIDEWALK. MAINTAIN ACCESS POINT AS LONG AS POSSIBLE TO MINIMIZE DISTURBANCE TO ADJACENT COMMERCIAL DEVELOPMENT.
8. REMOVE POWER POLES AND GUY WIRES ALONG THE OLD MEADOW LANE ON SITE

KEYNOTES

- 1 ABANDON VERTICAL PIPE, SEE NOTE 6 ABOVE
- 2 REMOVE CONCRETE APRON, SEE NOTE 7 ABOVE
- 3 REMOVE POWER POLE
- 4 REMOVE GUY WIRE
- 5 PRESERVE BENCHMARK UNTIL CONSTRUCTION ELEVATION CONTROL CAN BE ESTABLISHED ELSEWHERE
- 6 REMOVE CURB AND GUTTER
- 7 SAW CUT PAVEMENT
- 8 REMOVE AND SALVAGE LIGHT POLE FOR RELOCATION

LEGEND

- REMOVE ASPHALT PAVEMENT
- REMOVE CONCRETE PAVEMENT
- REMOVE TREE/SHRUB

NORTH

Scale in Feet

0
40
80

REVISIONS		
NO.	ITEM	DATE

PLOTTING SCALE: 1" = 40'

DESIGNED BY: **KCH**

DRAWN BY: **JBB**

CHECKED BY: **KCH**

DATE: **MAY 28, 2014**

McClure
Engineering Associates, Inc.

5417 North 118th Court
(414) 616-4880

Milwaukee, Wisconsin 53225
FAX (414) 616-4885

SITE DEMOLITION PLAN

GOOD HARVEST MARKET II, LLC

1850 MEADOW LANE **262-544-9380** **WAUKESHA, WI.**

FILE NAME: W:\USERS\jrb\g\goodharvest\13025 E8.dwg JOB NUMBER: 08-15-13-025