

# Waukesha Residences, LLC by T. Wall Enterprises, LLC Fox Head Residences - Plan Commission Submittal

Maple Avenue, Waukesha, Wisconsin



11000 west park place milwaukee, wisconsin 53224 t 414 359 3060  
2310 crossroads drive suite 2000 madison, wisconsin 53718 t 608 240 9900  
1613 fruitville road suite 3 sarasota, florida 34236 t 941 348 3618  
intelligent designs. inspired results. | [www.prarch.com](http://www.prarch.com)

## Sheet Index

### Architectural

A000 - Title Sheet  
A001 - Exterior Perspective  
A002 - Existing Aerial Site Plan  
A003 - Proposed Aerial Site Plan  
A200 - Lower Parking Plan  
A201 - Site Plan / First Floor Plan  
A202 - Second Floor Plans  
A203 - Third Floor Plans  
A204 - Fourth Floor Plan  
A205 - Mezzanine Floor Plan  
A232 - Unit Layouts  
A233 - Unit Layouts  
A400 Exterior Elevations  
A401 Exterior Elevations

### Landscape

L1 - Landscape Plan

### Site Civil

S554 - Draft ALTA/ACSM Land Title Survey 1 of 2  
S554 - Draft ALTA/ACSM Land Title Survey 2 of 2  
C100 - Existing Conditions  
C200 - Demolition Plan  
C300 - Site Plan  
C400 - Grading and Erosion Control Plan  
C500 - Utility Plan  
C600 - Plan and Profile - Watermain Easement  
C601 - Plan and Profile - Watermain Easement

### Site Lighting

E1 - Site Lighting Layout Plan

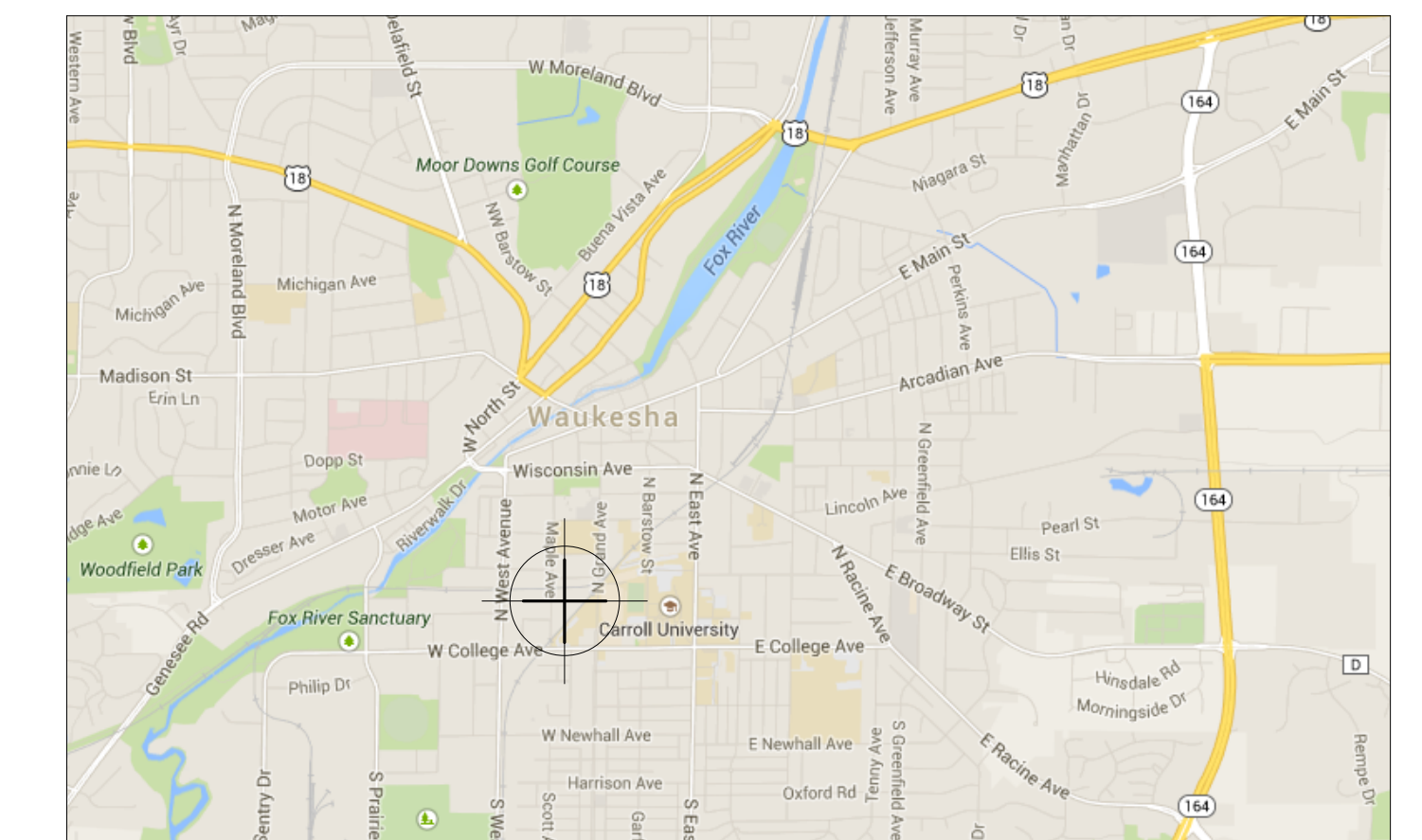
### Additional Information

R.A Smith National - Memo

## Project Information

Project Date: 1/13/14  
PRA Project Number: 140243-03

## Project Location



## Project Team



<b>Owner</b> Waukesha Residences, LLC T Wall Enterprises, LLC	Tel 608 575-1018
<b>Architectural</b> Plunkett Raysich Architects, LLP	Tel 414 359-3060 Fax 414 359-3070
<b>Landscape</b> Bruce Compnay	Tel 608 826-0532 Fax 608 831-4236
<b>Site Civil</b> Vierbicher	Tel 414 555-1234 Fax 608 826-0532
<b>Site Lighting</b> Powrtek Engineering, Inc	Tel 262 827-9575 Fax 262 827-9615



NOT FOR CONSTRUCTION

© Plunkett Raysch, Architects, LLP

Drawn By:  
MT,NU,MR  
Date:  
1/13/14  
Job No.:  
140243-03  
Sheet No.:

A 001

Fox Head Residences - Plan Commission Submittal  
Maple Avenue, Waukesha, Wisconsin

Revisions

pr  
PLUNKETT RAYSCH  
ARCHITECTS, LLP

11000 West Park Place Milwaukee, Wisconsin 53224 1 414 359 2646  
2310 Crossroads Drive 2000 Madison, Wisconsin 53718 1 608 248 9900  
1613 Frutkin Road Suite 3 Sarasota, Florida 34236 1 941 348 3618  
intelligent designs. inspired results. | www.praarch.com



1 EXISTING SITE PLAN  
A.002 1" = 20'-0"

NOT FOR CONSTRUCTION  
© Plunkett RAYSCH Architects, LLP

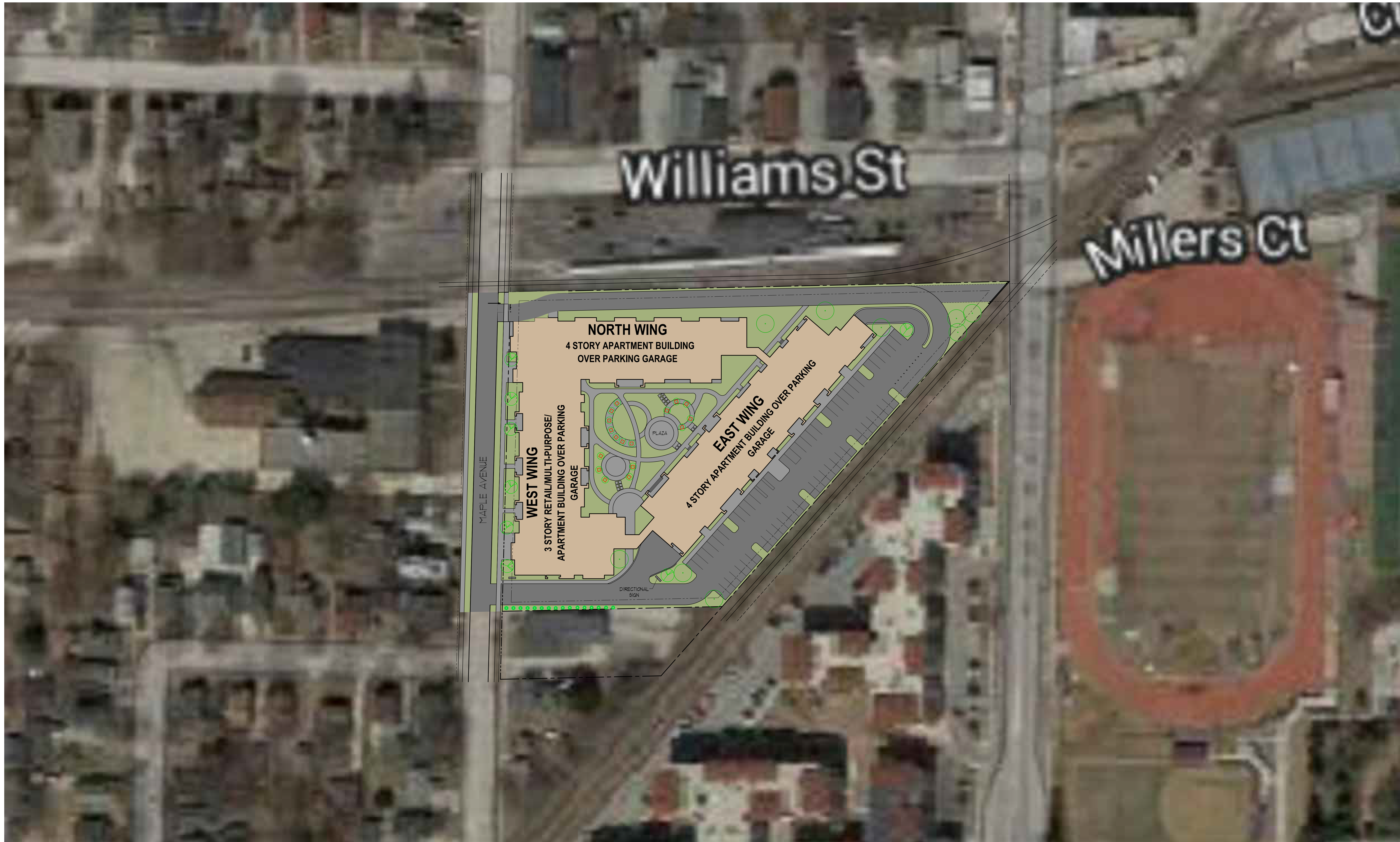
Drawn By:  
CB,MT  
Date:  
1/13/14  
Job No.:  
140243-03  
Sheet No.:

Fox Head Residences - Plan Commission Submittal  
Maple Avenue, Waukesha, Wisconsin

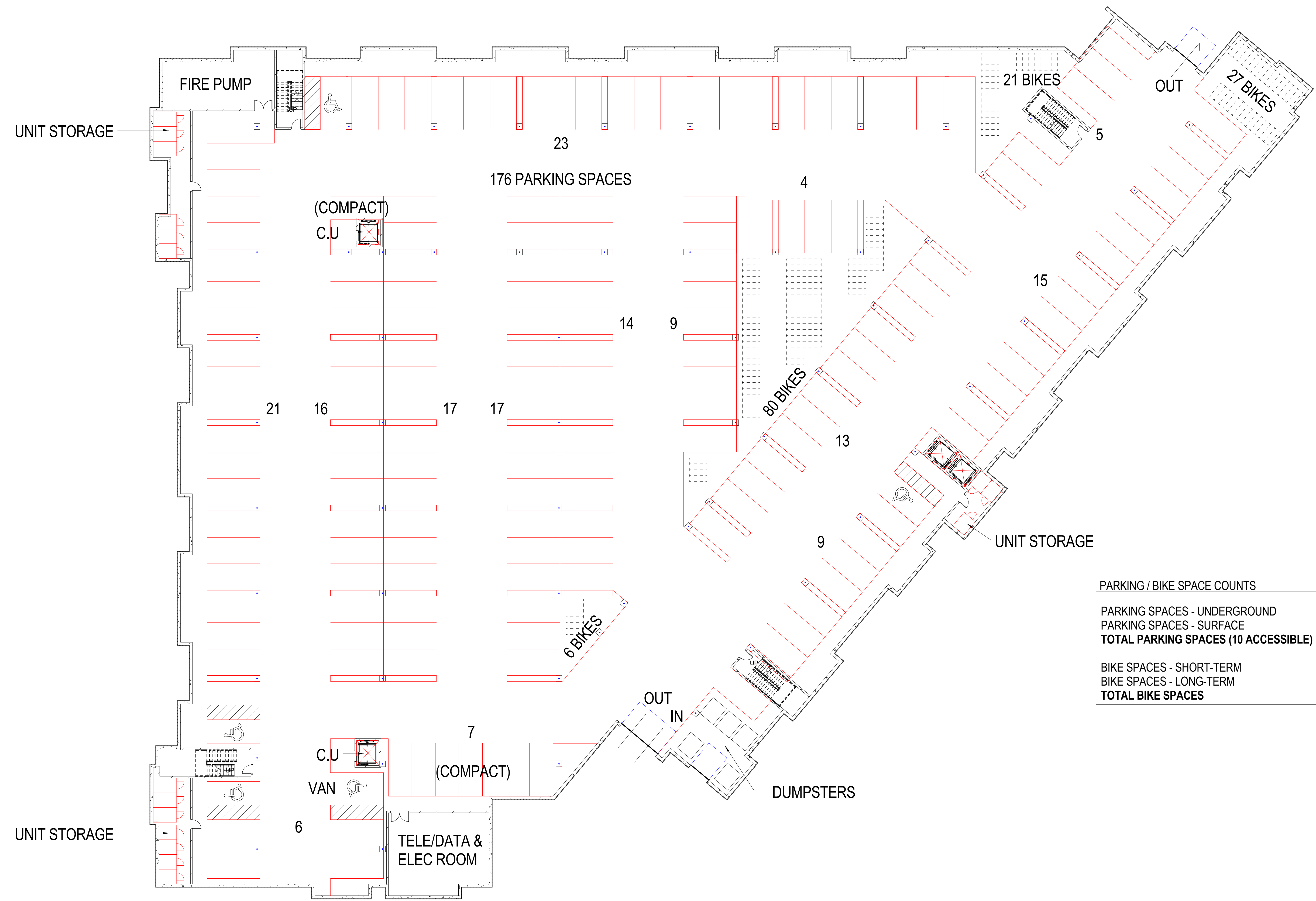
pra

PLUNKETT RAYSCH  
ARCHITECTS, LLP

11000 West Park Place Milwaukee, Wisconsin 53224 1 414 359 2646  
2310 Crossroads Drive 2000 Madison, Wisconsin 53718 1 608 248 9900  
1613 Frutville Road Suite 3 Sarasota, Florida 34236 1 941 348 3618  
intelligent designs. inspired results. | www.praich.com



1/22/2015 4:51:13 PM C:\pra\local\Project Files\140243-03-A-central\1/4\_rubber1.rvt



PARKING / BIKE SPACE COUNTS	
	TOTALS
PARKING SPACES - UNDERGROUND	176
PARKING SPACES - SURFACE	62
<b>TOTAL PARKING SPACES (10 ACCESSIBLE)</b>	<b>238</b>
BIKE SPACES - SHORT-TERM	13
BIKE SPACES - LONG-TERM	121
<b>TOTAL BIKE SPACES</b>	<b>134</b>

1 LOWER LEVEL PLAN - 1/16  
A200 1/16" = 1'-0"

NOT FOR CONSTRUCTION  
© Plunkett RAYSCH Architects, LLP

Revisions	
Drawn By:	AD
Date:	1/13/14
Job No.:	140243-03
Sheet No.:	A200

Fox Head Residences - Plan Commission Submittal  
Maple Avenue, Waukesha, Wisconsin

pra

PLUNKETT RAYSCH  
ARCHITECTS, LLP

11000 West Park Place Milwaukee, Wisconsin 53224 1 414 359 2646  
2310 Crossroads Drive 2000 Madison, Wisconsin 53718 1 608 248 9900  
1613 Frohille Road Suite 3 Sarasota, Florida 34236 1 941 348 3618  
intelligent designs. inspired results. | www.pra.com