

EXHIBIT B

CERTIFIED SURVEY MAP NO. 10508

BEING ALL OF LOT ONE (1) OF CERTIFIED SURVEY MAP NO. 4400, RECORDED SEPTEMBER 14, 1983 IN VOLUME 35 OF CERTIFIED SURVEY MAPS ON PAGES 90, 91 AND 92, AS DOCUMENT NO. 1229245, AND UNPLATTED LANDS ALL BEING A PART OF THE SOUTHEAST 1/4 AND THE NORTHEAST 1/4 OF THE SOUTHWEST 1/4 AND A PART OF THE NORTHWEST 1/4 AND THE SOUTHWEST 1/4 OF THE SOUTHEAST 1/4 OF SECTION NINE (9), IN TOWNSHIP SIX (6) NORTH, RANGE NINETEEN (19) EAST, IN THE CITY OF WAUKESHA, COUNTY OF WAUKESHA, STATE OF WISCONSIN,

PUBLIC UTILITY - SANITARY SEWER AND WATERMAIN EASEMENT LOCATION



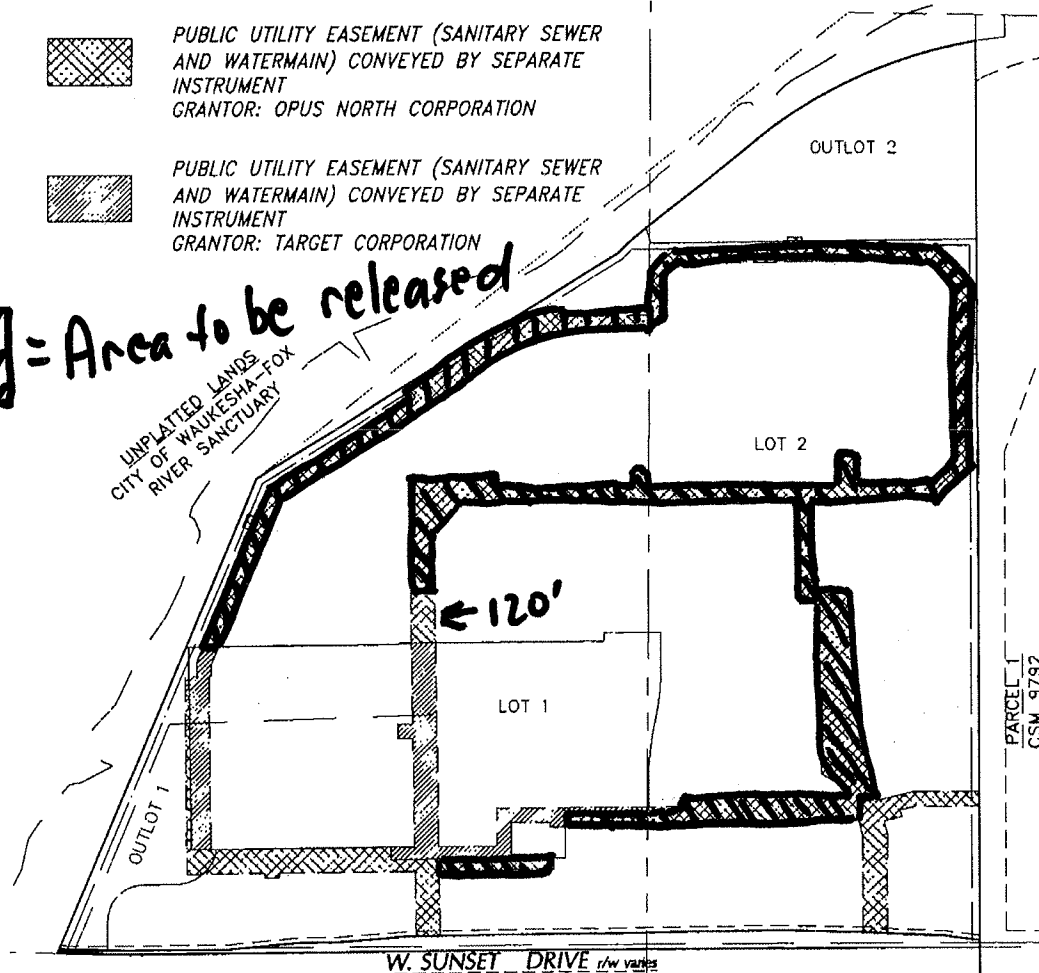
PUBLIC UTILITY EASEMENT (SANITARY SEWER AND WATERMAIN) CONVEYED BY SEPARATE INSTRUMENT
GRANTOR: OPUS NORTH CORPORATION



PUBLIC UTILITY EASEMENT (SANITARY SEWER AND WATERMAIN) CONVEYED BY SEPARATE INSTRUMENT
GRANTOR: TARGET CORPORATION

= Area to be released

UNPLATTED LANDS
CITY OF WAUKESHA-FOX
RIVER SANCTUARY



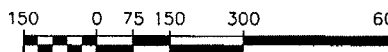
RIVER'S EDGE

UNPLATTED LANDS

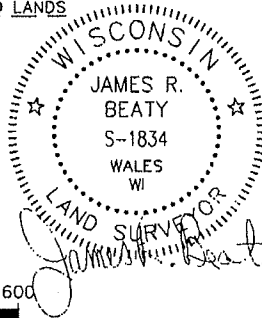
SOUTH PARK
ESTATES



GRAPHIC SCALE



(IN FEET)
1 inch = 300 ft.



DATED OCTOBER 24, 2007
REVISED JANUARY 15, 2008
REVISED FEBRUARY 13, 2008