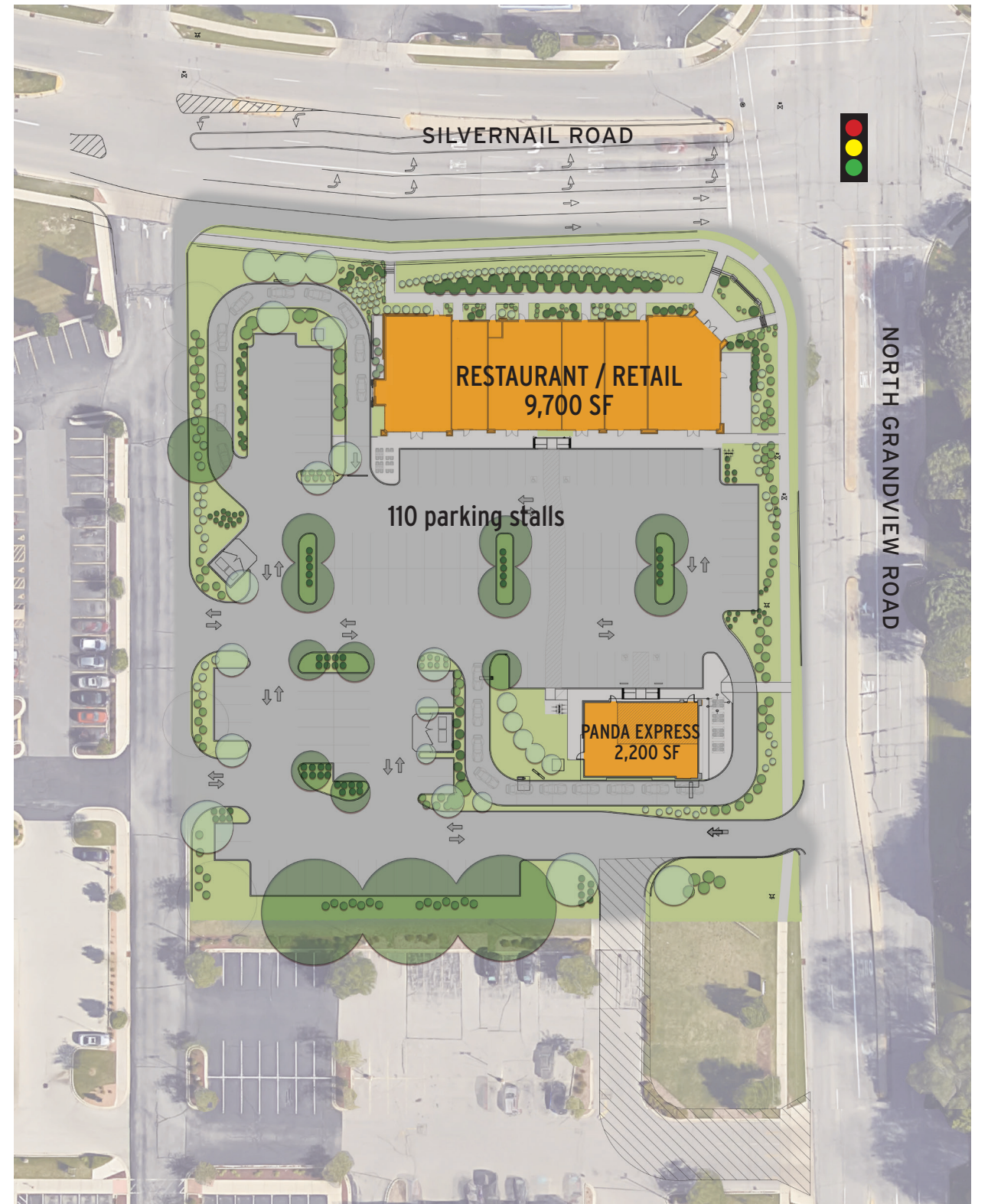


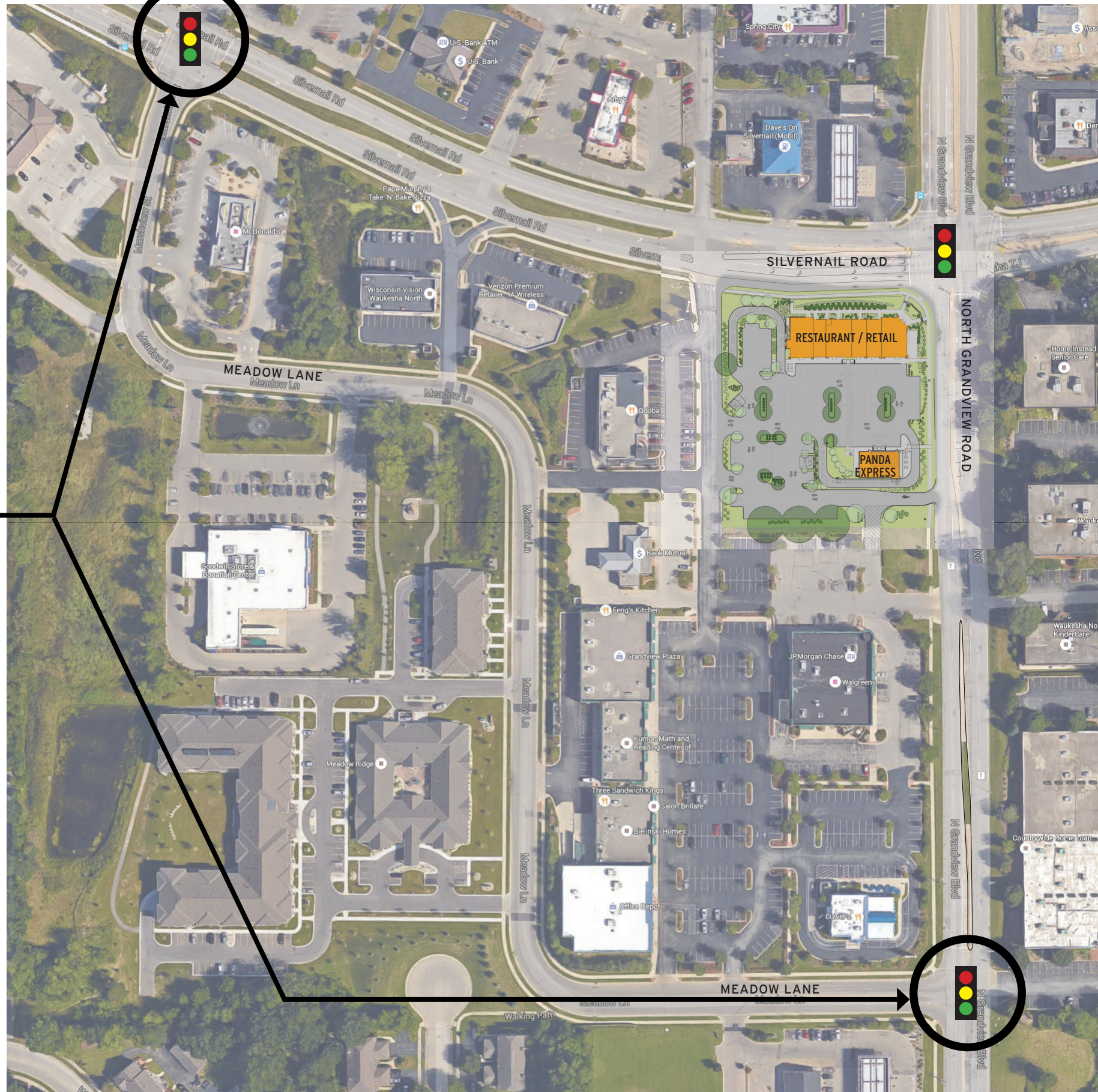


BEFORE



AFTER





COORDINATE SIGNAL WITH GRANDVIEW AND SILVERNAIL DURING LUNCH HOURS TO MINIMIZE QUEUES & MAXIMIZE GAPS IN TRAFFIC ALONG SILVERNAIL

SILVERNAIL ROAD:

- Close the existing Gasthaus driveway onto Silvernail Road.
- Construct a 100-foot westbound left-turn lane on Silvernail.
- Shifting the eastbound curb-side lane south and modifying the median along Silvernail (providing additional row).
- Retime the traffic signals at Silvernail & Marshview to meter traffic, thus reducing queues at the signals and creating gaps in traffic to accommodate driveways.

GRANDVIEW ROAD:

- Close the existing Gasthaus driveway and median opening immediately south of Silvernail Road.
- Construct the development driveway along Grandview as a right-in only driveway.
- Extend to 150-feet the Grandview northbound left-turn lane into the Walgreen's Driveway.
- Retime the traffic signals at Grandview and at Meadow Lane to meter traffic, thus reducing queues at the signals and creating gaps in traffic to accommodate driveways.

PANDA EXPRESS SITE:

- Designate parking along the south perimeter of the site for employee parking only.
- Remove residual ROW at Silvernail entrance from site plan.

CONTEXT PLAN





NORTHEAST VIEW FROM GRANDVIEW RD



NORTHEAST PERSPECTIVE

KEY PLAN



NORTHWEST PERSPECTIVE



KEY PLAN



SOUTHWEST PERSPECTIVE



KEY PLAN



SOUTHEAST PERSPECTIVE



KEY PLAN



SOUTH ELEVATION



NORTH ELEVATION



EAST ELEVATION



WEST ELEVATION

NOT TO SCALE



RENDER VIEW FACING SOUTHWEST



RENDER VIEW FACING SOUTHEAST



RENDER VIEW FACING NORTHEAST



RENDER VIEW FACING NORTHWEST



SOUTH ELEVATION



NORTH ELEVATION



EAST ELEVATION



WEST ELEVATION

NOT TO SCALE