

Charlie Griffith

From: Ram Subedi <ram@nobywisconsin.com>
Sent: Sunday, December 3, 2023 2:28 PM
To: Charlie Griffith
Subject: Re: Plan Commission review for carwash demolition
Attachments: 1635 E main St Demo.jpg

NOTICE: External Email

This email message originated from outside the City of Waukesha. Do not click on links or open attachments unless you have verified the sender. If there is concern, please report this email.

Charlie,

Attached is the photo of what we are looking to do.

1. I am looking to install surface mounted bollards in the red marked areas to prevent traffic for the time being.
2. The Blue marked building only to be removed, water/sewer capped off at the property line. The slab & footing remain and will be used for EV charging Stall installation in the future.

Thank you!

Ram Subedi
NOBY VENTURES
2525 N 124th St Suite 101
Brookfield, WI 53005
Tel: 262-325-7406

On Tue, Nov 28, 2023 at 4:41 PM Charlie Griffith <CGriffith@waukesha-wi.gov> wrote:

Mr. Subedi,

The site plan you submitted for your demolition is attached. Like I said, you'll need to have a professionally drawn site plan, stamped by a design professional, for the Demo Permit. For the Plan Commission a professionally drawn site plan would be preferred but if you can't get that done in time we can hopefully take what you can give us in this case.

It will need to show a realistic parking layout and/or the conceptual location for a charger (you can do two separate drawings if you'd like). The zoning code requires you to provide adequate access to the public street for each parking space, so you most likely will not be able to stack a bunch of vehicles in a row.

Let me know if you have any questions.

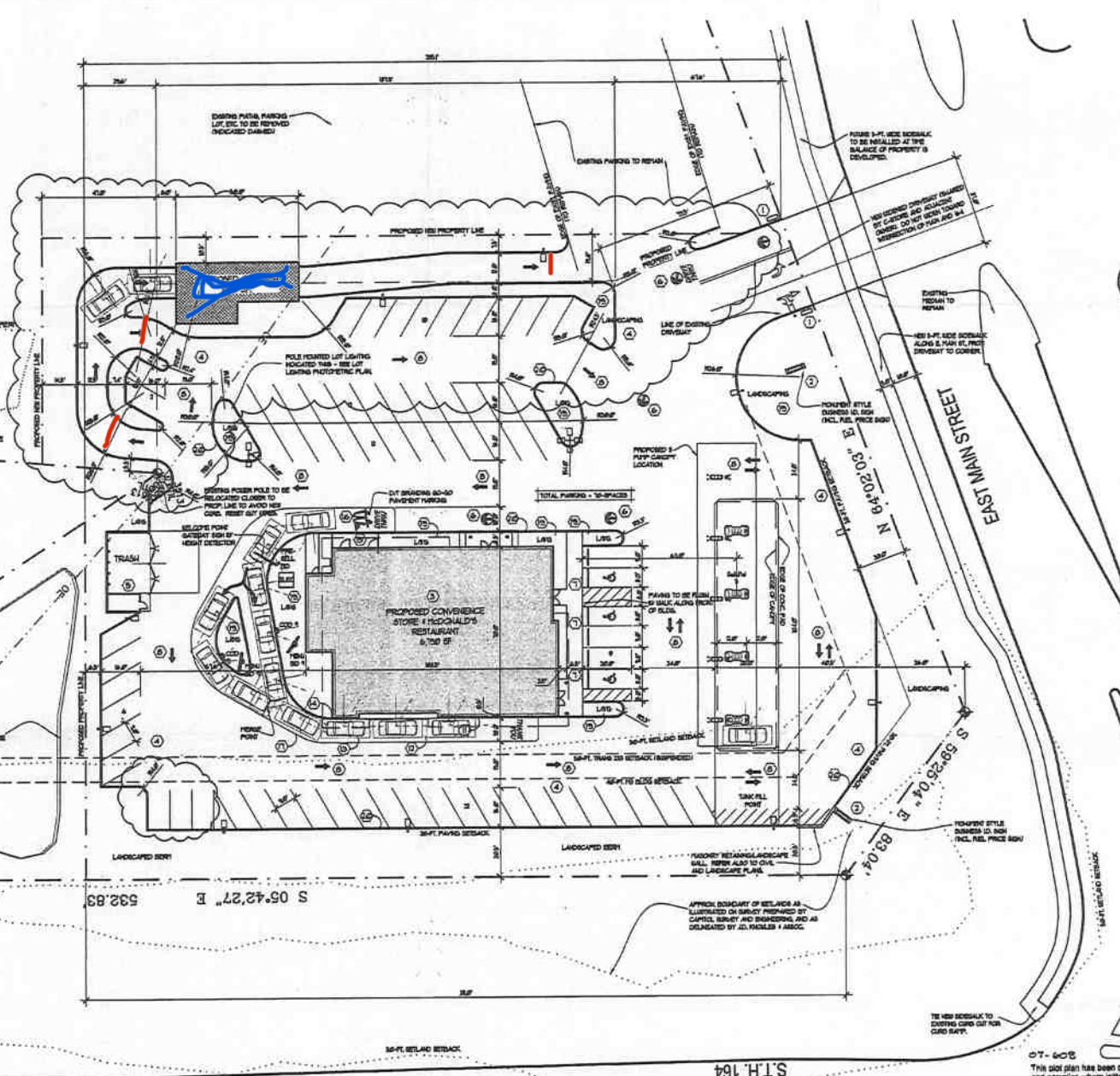
SITE PLAN KEYED NOTES:

THE FOLLOWING SITE PLAN KEYED NOTES ARE ENCLOSED WITH A \bigcirc SYMBOL ON THE SITE PLAN.

- 1 EVERGREEN LOT DIRECTIONAL SIGNS, 110-8H (INCLUDES LOGO ARCH ON REAR FACE) QTY. 2.
- 2 NEW MCDONALD'S ROAD SIGN, E.C. TO CONNECT URNS.
- 3 NEW CONVENIENCE STORE & MCDONALD'S RESTAURANT.
- 4 NEW ASPHALT PAVING WITH CONCRETE CURBS AND GUTTER AT PERIPHERY OF LOT - SEE DETL. 3/SD-4.
- 5 NEW TRASH ENCLOSURE WITH DRY GOODS STORAGE 8-4D. CONSTRUCTION OF ENCLOSURE PER SHEET SD-5.
- 6 LOT DIRECTIONAL DRIVE THRU APPROX. SEE SITE DETAILS.
- 7 ADA SIGNAGE ON 4" BOLLARD, PER DETAIL 3/SD-3.
- 8 STANDARD PAINTED LOT DIRECTIONAL ARROWS. SEE MCDONALD'S STANDARD SPECIFICATIONS.
- 9 NOT USED.
- 10 NOT USED.
- 11 12" SIDE CURB ON EAST SIDE OF BUILDING.
- 12 CONCRETE DRIVE THRU LANE, PER DETAIL 8/SD-3 DET1.
- 13 CONCRETE APPROACH PAV. EXTEND TO EAST LINE OF DRIVE THRU LANE. CONSTRUCTION PER DETAIL 8/SD-3.
- 14 STANDARD PIPE BOLLARD POST PER DETAIL 8/SD-3. SEE GENERAL NOTE 10.
- 15 BUILDING SIDEWALKS. BRUSHED CONC. BALK WITH 8" WIDE COLORED AND STAFFED BORDER SEE DETAIL 8/SD-4 DET1 AND 8/SD-4 DET2.
- 16 PAINTED DRIVE-THRU DIRECTION ARROWS, MCDONALD'S 'SO GO LOGO' ETC. SEE MCDONALD'S STANDARD SPECIFICATIONS.
- 17 6" WIDE PAINTED STRIPE AT DRIVE-THRU PER MCDONALD'S SPECIFICATIONS.
- 18 BRUSHED CONC. PATIO WITH TOGGED JOINTS (TYP. AT ALL JOINT IN CONC. SIDEWALKS) AT 8'-0" O.C. SEE DETAIL 8/SD 8/4. PROVIDE 6" WIDE COLORED AND STAFFED BORDER SEE DETAIL 8/SD-4 DET1.
- 19 PLANTED AREA SEE LANDSCAPE PLAN.
- 20 TYPICAL 6" X 18" CONC. CURB SEE DETAIL 1/SD-4.

GENERAL SITE NOTES:

SEE SHEET C-2 FOR ALL SITE DEMOLITION WORK.
SEE SHEET SD-1 (ENLARGED DRIVE-THRU PLAN) FOR DETAILED INFORMATION ON DRIVE-THRU AREA.



SITE PLAN
SCALE: 1" = 20'-0"



DT-608
This site plan has been checked and approved where indicated.
Zachary M. S. Front Yards **ED**
Sally Yarbrough **ED** 1st floor grade
Flair Yarbrough **ED** Street Grade

haag müller, inc.
Architecture • Engineering • Interiors
101 East Grand Avenue
Port Washington
Wisconsin 53074-2216
Telephone (262) 268-1200
Facsimile (262) 268-1250
www.haagmuller.com
COPYRIGHT 2007 © Haag Müller



SITE PLAN
PROPOSED CARWASH FOR:
CONVENIENCE STORE & MCDONALD'S
S.W. CORNER OF EAST MAIN ST & C.T.H. 164
WAUKESHA, WISCONSIN

REVISIONS	
NO.	DATE

DATE: MARCH 19, 2007
PROJ. NO.: 51031423
DRAWN BY: GLL
SHEET: **C-1**

1655 E. Waukesha St.



McDonald's
See Our Full
McDonald's® Menu

ATM (Main Street Shell)

Seneff Manufacturing
Temporarily closed

Swing Time
Golf & Baseball
Temporarily closed

1635

1635

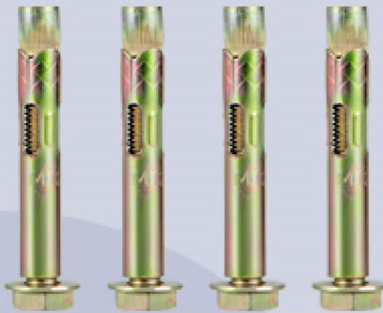
Google

Layers

PRODUCT PARAMETERS

- Height
36"/91.4 cm
- Diameter
4.5"/11.4 cm
- Tube Thickness
0.08"/2 mm
- Base Size
7.9" x 7.9"/20 x 20 cm
- Base Plate Thickness
0.2"/5 mm
- Net Weight
18lbs/8 kg
- Material
Q235 Steel
- Color
Yellow + Black

COMPLETE ACCESSORIES



4 x Anchor Bolt



1 x Wrench

