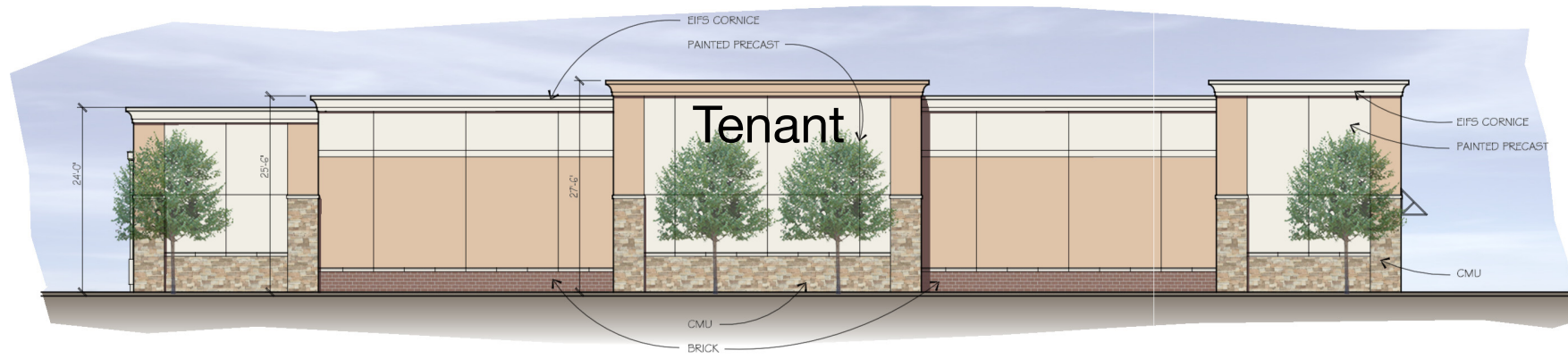


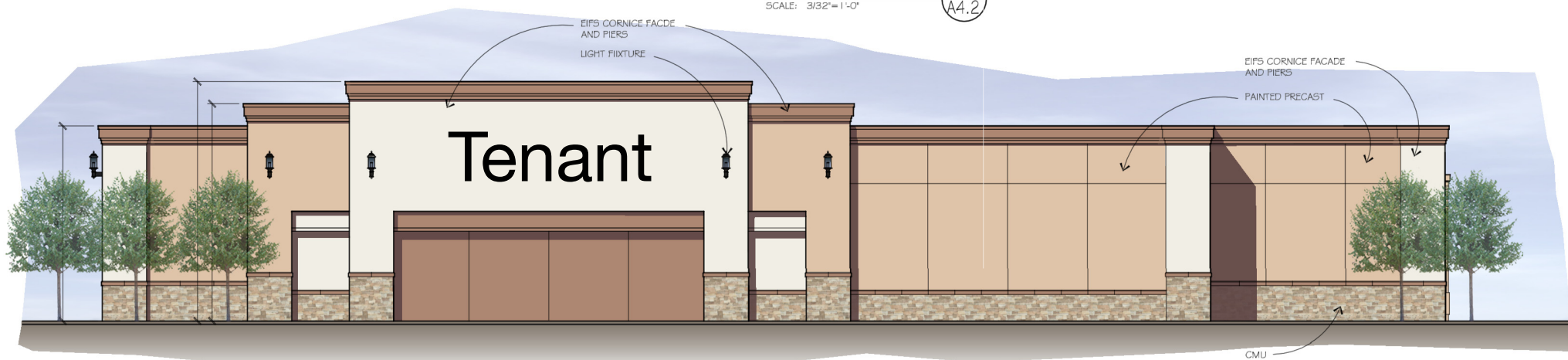
PARTIAL WEST ELEVATION 1  
SCALE: 3/32"=1'-0"  
A4.2



PARTIAL WEST ELEVATION 2  
SCALE: 3/32"=1'-0"  
A4.2



NORTH ELEVATION 3  
SCALE: 3/32"=1'-0"  
A4.2



SOUTH ELEVATION 4  
SCALE: 3/32"=1'-0"  
A4.2



KEY PLAN  
SCALE: NTS

BUILDING D ELEVATIONS :  
**SHOPPES AT FOX RIVER**  
WAUKESHA, WISCONSIN

OWNER/DEVELOPER:  
RAMCO-GERSHENSON INC.  
31500 NORTHWESTERN HWY., SUITE 300  
FARMINGTON HILLS, MICHIGAN 48334

**Wah Yee Associates**  
ARCHITECTS & PLANNERS  
37911 WEST TWELVE MILE ROAD  
FARMINGTON HILLS, MICHIGAN 48331  
PHONE 248.489.9160 FAX 489.0133  
PROJECT NO. 4761

All ideas, designs, arrangements, and plans indicated or represented by the drawing are owned by and the property of Wah Yee Associates and were created, evolved and developed for use on and in connection with the specified project. None of such ideas, arrangements, or plans shall be used by or disclosed to any person, firm or corporation for any purpose whatsoever without the written permission of Wah Yee Associates.

PRELIMINARY  
NOT FOR  
CONSTRUCTION  
A 4.2

ISSUED:  
OWNER REVIEW  
3-4-14  
OWNER REVIEW  
3-6-14  
CITY COMMENTS  
6-6-14