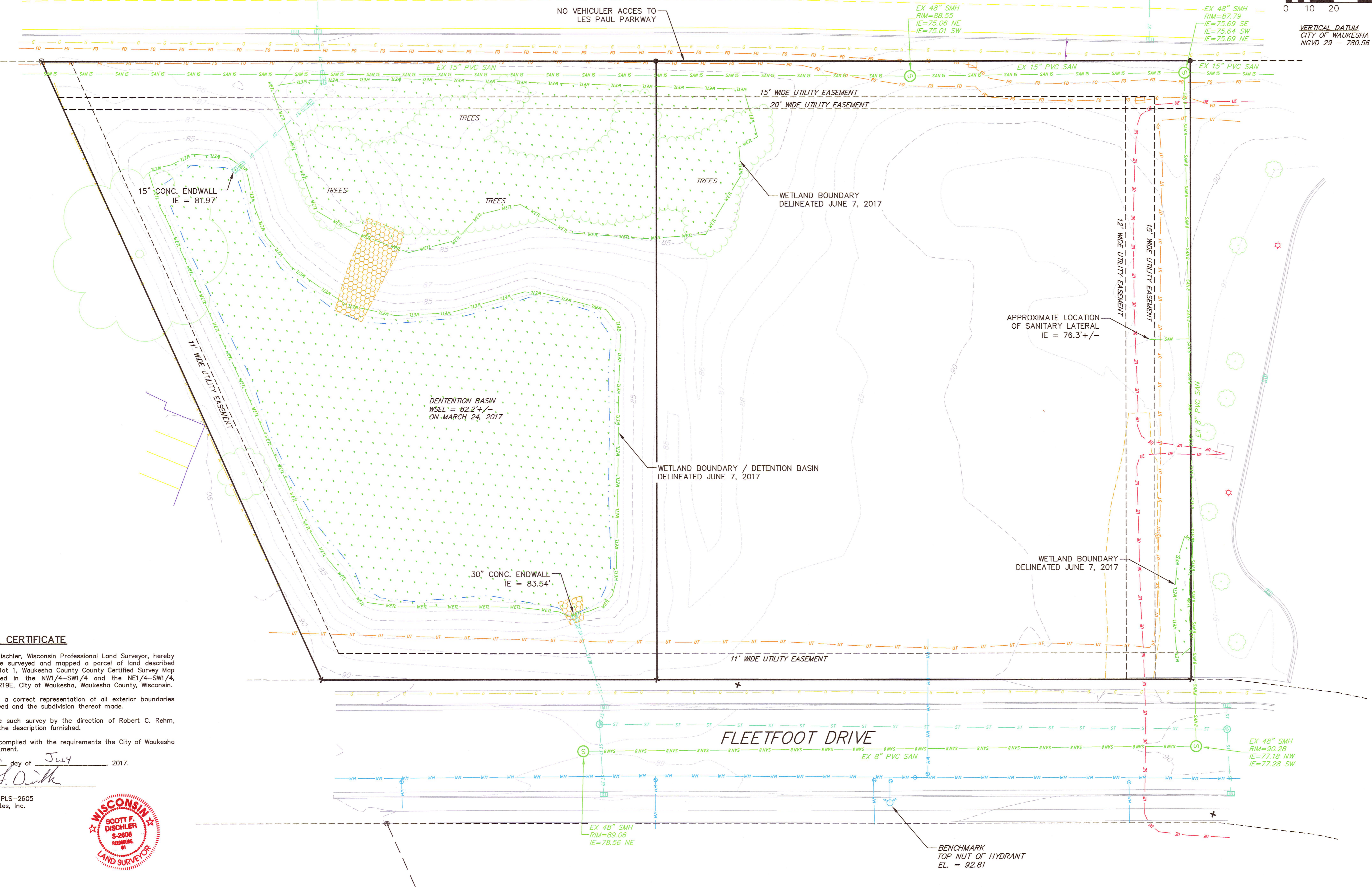


LES PAUL PARKWAY (NORTH BOUND)



SURVEYOR'S CERTIFICATE

I, Scott F. Dischler, Wisconsin Professional Land Surveyor, hereby certify that I have surveyed and mapped a parcel of land described as Lot 1 and Outlot 1, Waukesha County County Certified Survey Map No. 10537, located in the NW1/4-SW1/4 and the NE1/4-SW1/4, Section 12, T6N, R19E, City of Waukesha, Waukesha County, Wisconsin.

That such plat is a correct representation of all exterior boundaries of the land surveyed and the subdivision thereof made.

That I have made such survey by the direction of Robert C. Rehm, Jr., according to the description furnished.

That I have fully complied with the requirements the City of Waukesha Engineering Department.

Dated this 5th day of July 2017.

Scott F. Dischler

Scott F. Dischler, PLS-2605
 Vierbicher Associates, Inc.



EXISTING CONDITIONS

WAUKESHA PIZZA RANCH
 926 FLEETFOOT DRIVE
 WAUKESHA, WISCONSIN

REVISIONS		REVISIONS	
NO.	DATE	NO.	DATE

SCALE AS SHOWN

DATE 06/30/17

DRAFTER

SDIS

CHECKED GWOO

PROJECT NO. 150166

SHEET 1 of 1

DWG. NO.