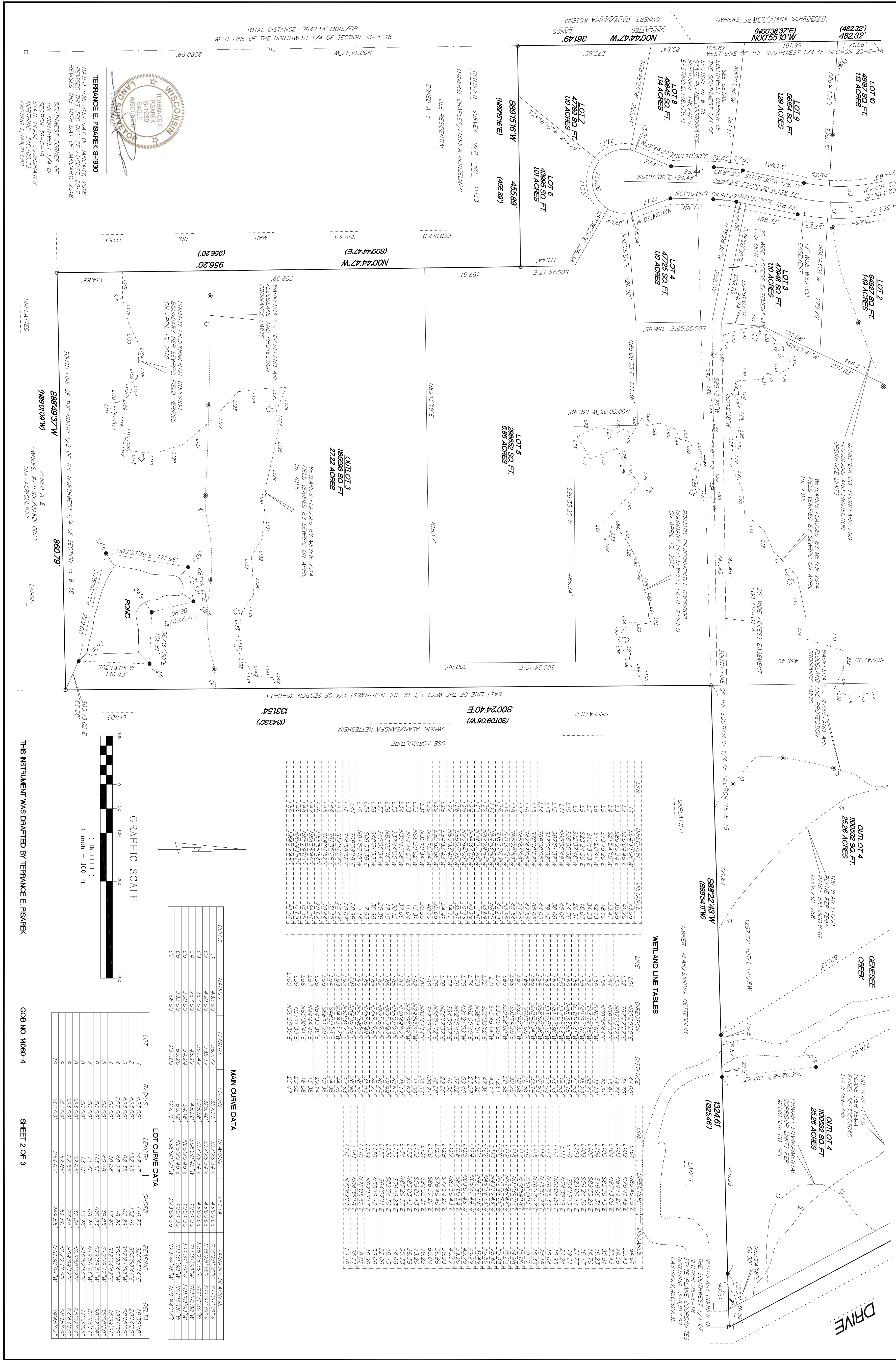


THE ARBORETUM

BEING A PART OF THE NE 1/4 OF 1/4 SW 1/4 OF SECTION 26 AND THE NW 1/4 OF THE NORTHWEST 1/4 OF SECTION 36, ALL IN TOWNSHIP 9 NORTH, RANGE 18 EAST, TOWN OF GENESSEE, WALKESHA COUNTY, WISCONSIN.



WETLAND LINE TABLES

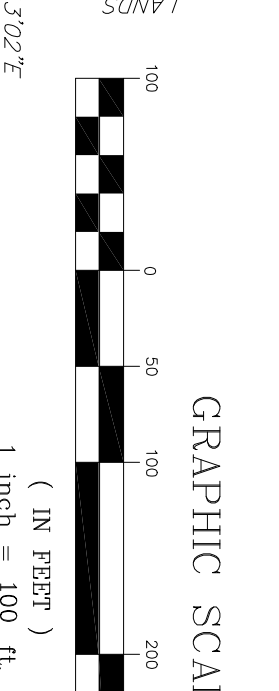
LINE	DIRECTION	DISTANCE	LINE	DIRECTION	DISTANCE
L1	N89°22'43"W	23.96	L101	N89°22'43"W	34.01
L2	S00°24'40"E	31.70	L102	N69°14'05"E	44.60
L3	S89°43'07"W	23.42	L103	N69°14'05"E	44.60
L4	S17°20'41"E	23.42	L104	N69°14'05"E	44.60
L5	S17°20'41"E	20.51	L105	N69°14'05"E	44.60
L6	S17°20'41"E	11.01	L106	N69°14'05"E	44.60
L7	S17°20'41"E	16.07	L107	N69°14'05"E	44.60
L8	S17°20'41"E	27.53	L108	N69°14'05"E	44.60
L9	S17°20'41"E	29.15	L109	N69°14'05"E	44.60
L10	S17°20'41"E	29.15	L110	N69°14'05"E	44.60
L11	S17°20'41"E	17.00	L111	N69°14'05"E	44.60
L12	S17°20'41"E	35.14	L112	N69°14'05"E	44.60
L13	S17°20'41"E	44.03	L113	N69°14'05"E	44.60
L14	S17°20'41"E	44.03	L114	N69°14'05"E	44.60
L15	S17°20'41"E	19.08	L115	N69°14'05"E	44.60
L16	S17°20'41"E	24.43	L116	N69°14'05"E	44.60
L17	S17°20'41"E	46.54	L117	N69°14'05"E	44.60
L18	S17°20'41"E	39.85	L118	N69°14'05"E	44.60
L19	S17°20'41"E	20.88	L119	N69°14'05"E	44.60
L20	S17°20'41"E	47.56	L120	N69°14'05"E	44.60
L21	S17°20'41"E	39.52	L121	N69°14'05"E	44.60
L22	S17°20'41"E	29.52	L122	N69°14'05"E	44.60
L23	S17°20'41"E	31.22	L123	N69°14'05"E	44.60
L24	S17°20'41"E	59.10	L124	N69°14'05"E	44.60
L25	S17°20'41"E	59.10	L125	N69°14'05"E	44.60
L26	S17°20'41"E	56.61	L126	N69°14'05"E	44.60
L27	S17°20'41"E	16.56	L127	N69°14'05"E	44.60
L28	S17°20'41"E	16.56	L128	N69°14'05"E	44.60
L29	S17°20'41"E	31.22	L129	N69°14'05"E	44.60
L30	S17°20'41"E	16.56	L130	N69°14'05"E	44.60
L31	S17°20'41"E	16.56	L131	N69°14'05"E	44.60
L32	S17°20'41"E	16.56	L132	N69°14'05"E	44.60
L33	S17°20'41"E	16.56	L133	N69°14'05"E	44.60
L34	S17°20'41"E	16.56	L134	N69°14'05"E	44.60
L35	S17°20'41"E	16.56	L135	N69°14'05"E	44.60
L36	S17°20'41"E	16.56	L136	N69°14'05"E	44.60
L37	S17°20'41"E	16.56	L137	N69°14'05"E	44.60
L38	S17°20'41"E	16.56	L138	N69°14'05"E	44.60
L39	S17°20'41"E	16.56	L139	N69°14'05"E	44.60
L40	S17°20'41"E	16.56	L140	N69°14'05"E	44.60

MAIN CURVE DATA

CURVE	RADIUS	LENGTH	CHORD	BEARING	DELTA	TANGENT BEARINGS
C1	4033.00'	392.77'	517.28'	517°29'54"E	48°00'06"	S38°28'36"E, S11°31'30"W
C2	4033.00'	305.12'	305.40'	517°29'54"E	48°00'06"	S38°28'36"E, S11°31'30"W
C3	4033.00'	484.27'	484.27'	506°20'45"W	102°1'30"	S17°31'30"W, S07°10'00"W
C4	467.00'	484.27'	484.27'	506°20'45"W	102°1'30"	S17°31'30"W, S07°10'00"W
C5	3001.00'	54.16'	60.12'	N08°20'45"E	102°1'30"	S17°31'30"W, S07°10'00"W
C6	3333.00'	60.20'	124.15'	N08°20'45"E	102°1'30"	S17°31'30"W, S07°10'00"W
C7	663.00'	29.150'	29.150'	N08°20'45"E	102°1'30"	S17°31'30"W, S07°10'00"W

LOT CURVE DATA

LOT	RADIUS	LENGTH	CHORD	BEARING	DELTA
1	433.00'	147.47'	146.75'	S76°43'14"E	19°30'48"
2	433.00'	152.95'	152.16'	S06°50'41"E	20°14'20"
3	433.00'	62.35'	62.35'	S02°46'04"W	02°15'10"
4	66.00'	16.04'	17.98'	S17°34'42"E	15°39'51"
5	66.00'	40.48'	38.85'	S17°39'17"W	35°08'28"
6	66.00'	113.51'	100.03'	S17°39'17"W	88°12'09"
7	66.00'	113.51'	100.03'	S17°39'17"W	88°12'09"
8	66.00'	13.31'	13.28'	N03°58'52"E	11°33'03"
9	333.00'	27.55'	32.64'	N03°58'52"E	05°17'04"
10	307.00'	254.63'	254.63'	N16°36'04"W	39°45'07"



TERRANCE E. PISAREK - S-1830
 DATED THIS 21ST DAY OF JANUARY 2018
 REVISED THIS 30th DAY OF AUGUST, 2018
 REVISION THIS 10th DAY OF JANUARY, 2018

SOUTHWEST CORNER OF SECTION 26-6-18
 NORTHING 346100.32
 EASTING 2448213.82

SOUTHWEST CORNER OF SECTION 36-6-18
 NORTHING 346100.32
 EASTING 2448213.82