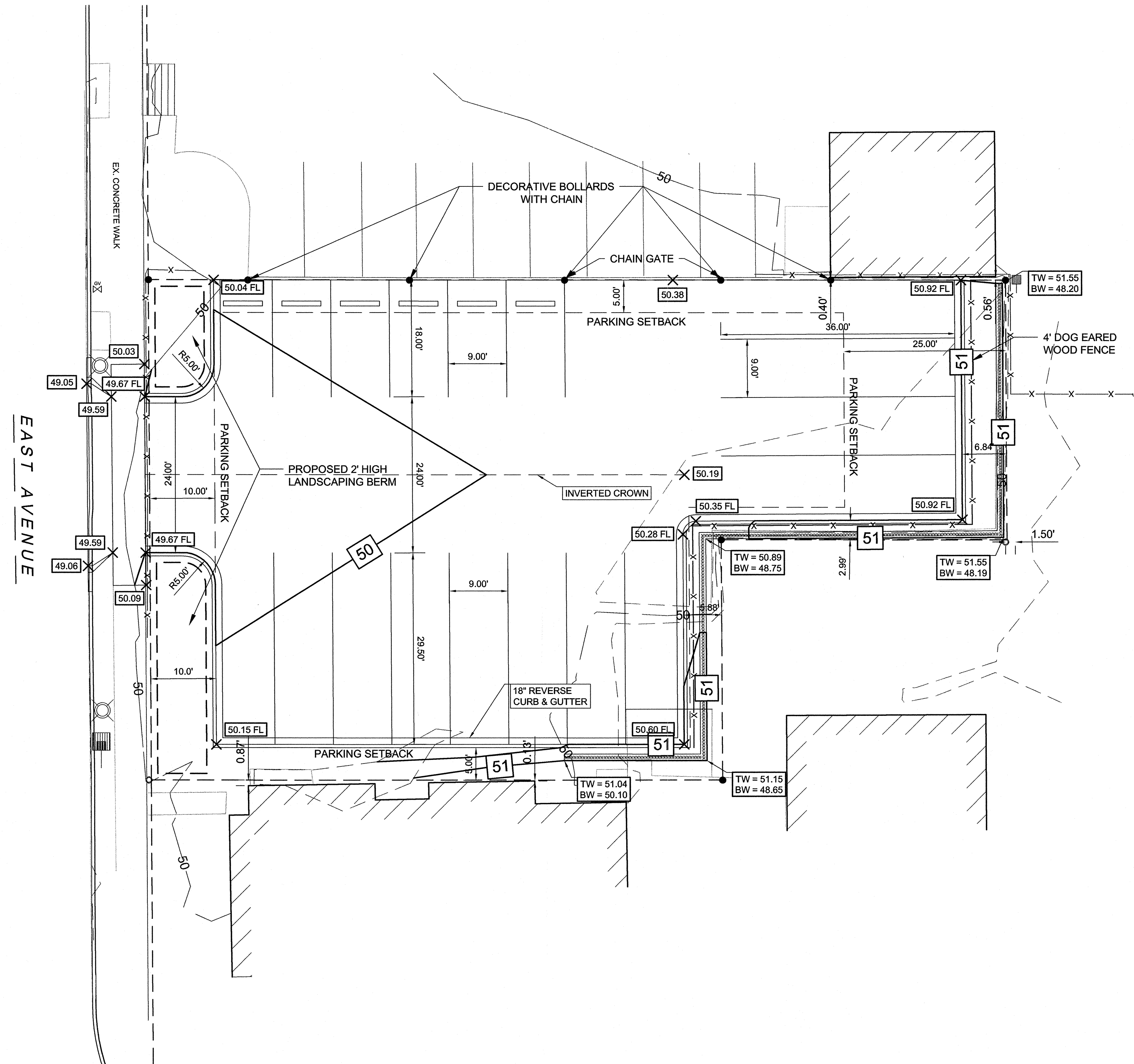
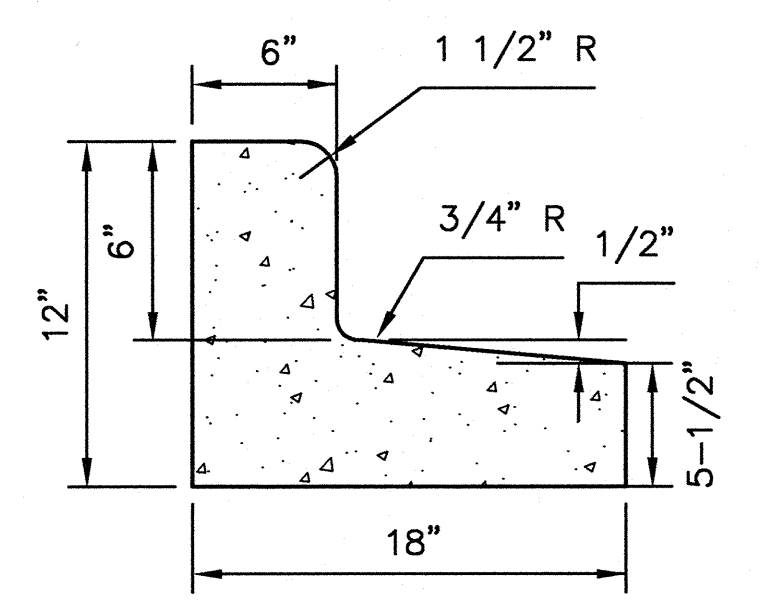
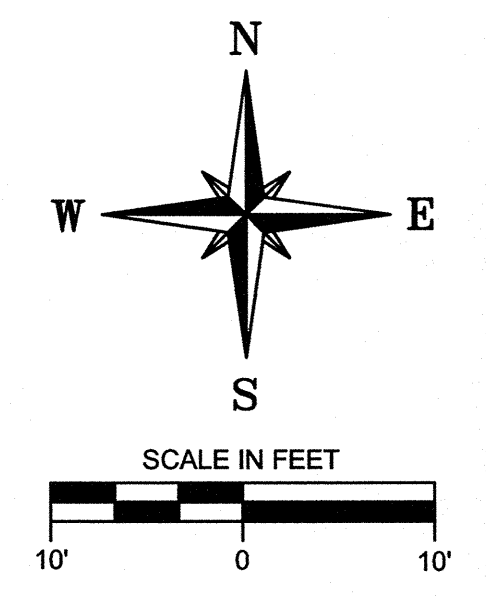


EAST LINE OF THE NE 1/4 OF SECTION 3, T 6 N, R 19 E (S 00°05'00" E)
 CENTERLINE OF N. EAST AVE (S 00°18'20" E)



- LEGEND:**
- EX. MONUMENT FOUND
 - EX. SANITARY MANHOLE
 - EX. STORM MANHOLE
 - EX. CATCH BASIN ROUND
 - EX. CATCH BASIN SQUARE
 - EX. TELEPHONE MH
 - EX. AIR CONDITIONER
 - EX. ELECTRICAL METER
 - EX. GAS METER
 - EX. BOLLARD
 - EX. WATER VALVE
 - EX. DECIDUOUS TREE
 - EX. SANITARY SEWER LINE
 - EX. RETAINING WALL
 - EX. WATER LINE
 - EX. FENCE LINE
 - EX. RAILING
 - PROP. SAW-CUT LINE



REJECT CURB SECTION
 NOT TO SCALE

FOR: 101 WEST MAIN, LLC
GRADING PLAN - OFF-SITE PARKING
 RE: 101 W. MAIN STREET
 PART OF THE NE 1/4 OF SECTION 3, T6N, R19E
 CITY OF WAUKESHA, WAUKESHA COUNTY, WI.

JAHNKE & JAHNKE ASSOCIATES INC.
 PLANNERS & PROFESSIONAL ENGINEERS
 711 W. MORELAND BLVD. - WAUKESHA, WI 53188
 TEL. No. (262) 542-5797 FAX (262) 542-7698

SCALE: 1" = 10'	DATE: MAY 26, 2015	
DRAWN BY: _____	CHECKED BY: PJJ	FILE NO.: WAUKESHA 1167
REVISED: SEPTEMBER 18TH, 2017	BOOK NO.: WAUKESHA 194	JOB: S-8373 SHEET 4 OF 5

FILE NAME: S:\PROJECTS\98373\DWG\S8373.DWG