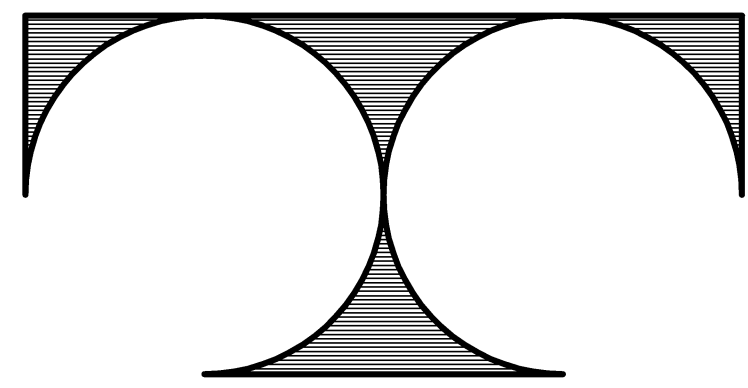


PROJECT :

# PIZZA RANCH #8610

926 FLEETWOOD DRIVE  
WAUKESHA, WISCONSIN

ARCHITECT & ENGINEER



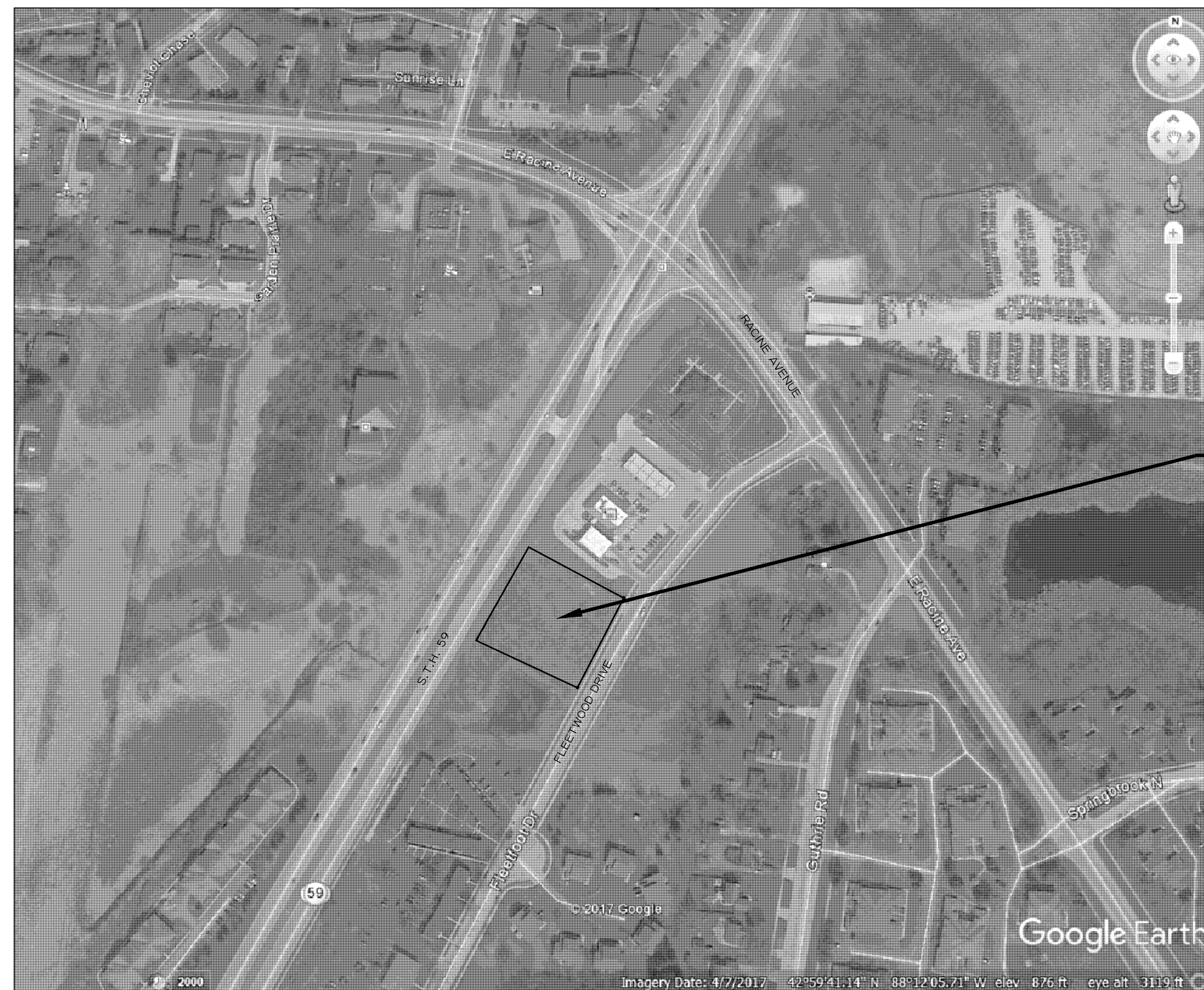
**TDI ASSOCIATES, INC.**  
ARCHITECTURE, ENGINEERING, PLANNING  
N8 W22350 JOHNSON DR., SUITE B-4  
WAUKESHA, WI 53186  
(262) 409-2530

DEVELOPER :

**PR WAUKESHA, LLC**  
255 JEFFERSON STREET  
WATERLOO, WI 53594

## DRAWING INDEX :

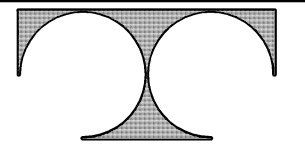
C-1.0	TITLE SHEET
I OF I	EXISTING TOPOGRAPHIC MAP
C-2.0	SITE DEVELOPMENT PLAN
C-2.1	SITE LIGHTING PLAN
C-3.0	GRADING/DRAINAGE PLAN
C-4.0	EROSION CONTROL PLAN
L-1.0	LANDSCAPE PLAN
A1.21	FIRST FLOOR PLAN
A2.11	EXTERIOR ELEVATIONS
A2.12	EXTERIOR ELEVATIONS
A3.11	BUILDING SECTION



SITE LOCATION:  
926 FLEETWOOD DR.  
WAUKESHA, WISCONSIN  
WAUKESHA COUNTY



VICINITY MAP

REVISIONS:		TDI ASSOCIATES, INC. All Rights Reserved N8 W22350 JOHNSON DRIVE, SUITE B4 WAUKESHA, WISCONSIN 53186 PHONE 262-409-2530 FAX 262-409-2531	 <small>OWNERSHIP OF DOCUMENTS</small> <small>This document and the ideas and design incorporated herein, as an instrument of professional service, is the sole property of TDI Associates, Inc., and is not to be used in whole or in part for any other project or purpose without the expressed written authorization of TDI Associates, Inc.</small>
NOTE	DATE		
		<b>CITY OF WAUKESHA, WI</b> <b>PIZZA RANCH #8610 -FLEETWOOD DRIVE</b> <b>TITLE SHEET</b>	<small>JOB NO: 15-383.000</small> <small>DATE: 09-18-17</small>
		<small>DESIGNED BY: ROB</small> <small>DRAWN BY: ROB</small> <small>CHECKED BY:</small>	<small>APPROVED BY:</small>
		<small>ENGINEER</small> <small>DATE</small>	<b>SHEET C-1.0</b>