

CRITTER CONTROL - ACCESSIBLE ALTERATIONS

1806 E. MAIN STREET | WAUKESHA, WI 53186



Architect
259 South Street, Suite A
WAUKESHA, WI 53186
p: 833-380-6180

Project Info. — 23098

CRITTER CONTROL
ACCESSIBLE ALTERATIONS
1806 E. Main Street
Waukesha, WI 53186

Sheet Title

TITLE AND CODE SHEET

Drawn by	Checked by
SC/JMS	JMS

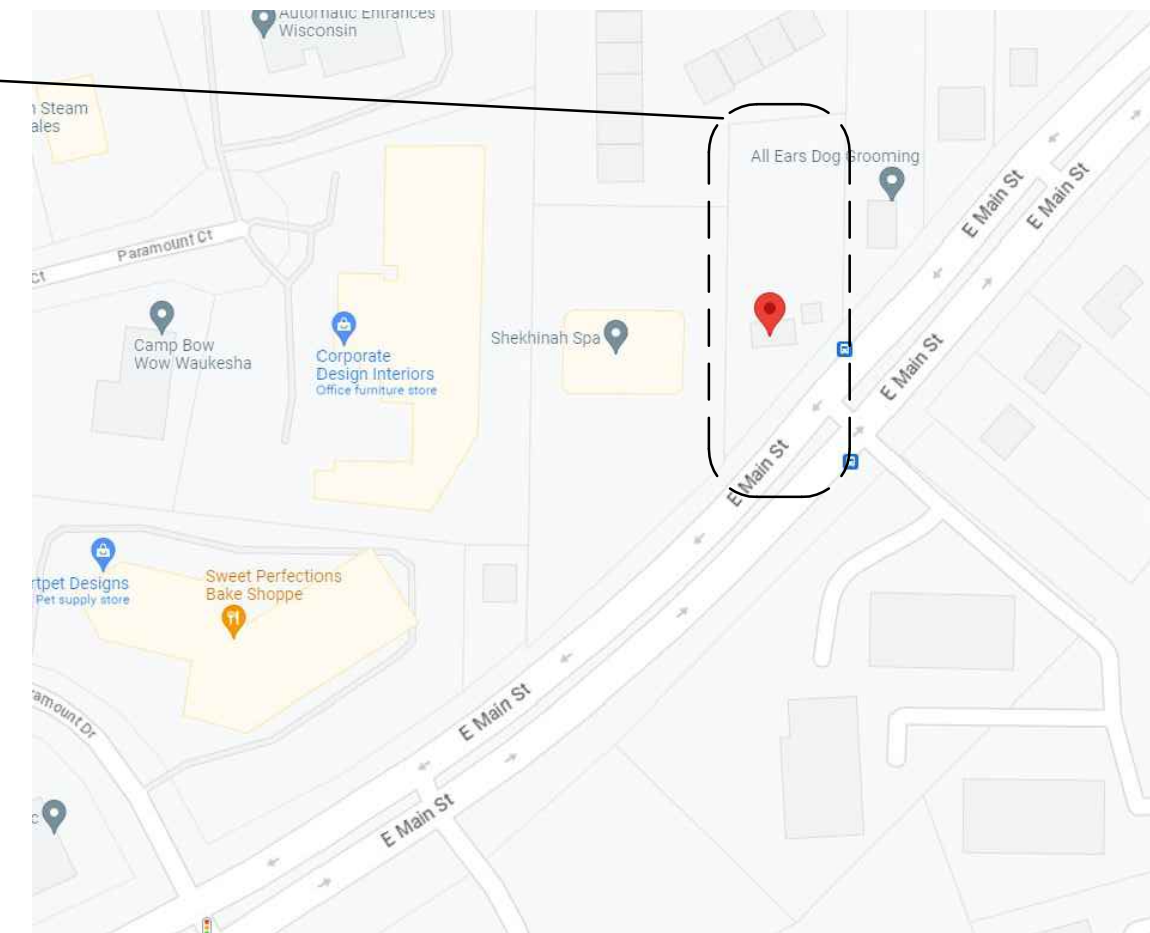
Revisions		
No.	Date	Description
1	11.10.2023	Preliminary

Sheet No.

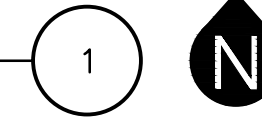
T1.0

SHEET INDEX	
SHEET	DESCRIPTION
T1.0	TITLE SHEET AND ARCHITECTURAL SITE PLAN
ARCHITECTURAL	
A1.0	FLOOR PLAN, NOTES AND CODE INFORMATION
A2.0	EXTERIOR ELEVATIONS
CIVIL	
C100	PAVING, GRADING AND EROSION CONTROL PLAN

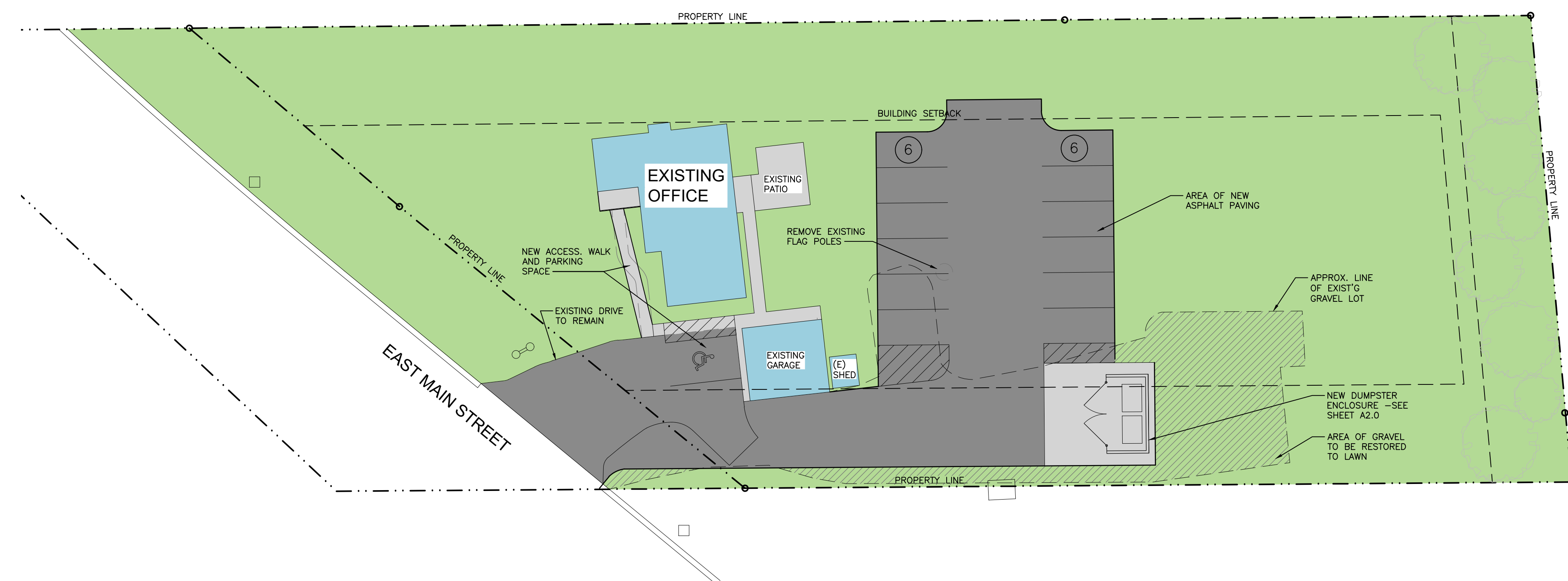
SITE



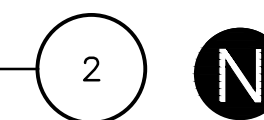
VICINITY MAP
SCALE: N.T.S.



PROJECT CONTACT INFO		
OWNER: EVAN WINDHOLZ WINDY HOLDINGS, LLC 297 KNOLLWOOD DRIVE TRAVERSE CITY, MI 49686 P: 231-590-2903	ARCHITECT: THRIVE ARCHITECTS 259 SOUTH STREET, SUITE A WAUKESHA, WI 53186 P: 833-380-6180 EXT. 708 PROJECT MANAGER: JEFF STOWE	CIVIL ENGINEER: ELLENA ENGINEERING CONSULTANTS, LLC 700 PILGRAM PARKWAY, SUITE 100 ELM GROVE, WI 53122 P: 262-719-6183 CONTACT: MARK ELLENA



SITE PLAN
SCALE: 1"=20'



11.10.23 - ARCH. & SITE PLAN REVIEW

Drawn by	Checked by
SC/JMS	JMS

Revisions

No.	Date	Description
1	11.10.2023	Preliminary

- FLOOR PLAN KEYNOTES**
- 1 PATCH EXISTING SURFACES AT AREAS OF DEMOLITION TO MEET AND MATCH EXISTING CONSTRUCTION.
 - 2 NEW CONCRETE PORCH
 - 3 NEW CONCRETE SIDEWALK. MAX. SLOPE 1:20. MEET EXISTING WALK.
 - 4 ACCESSIBLE PARKING SPACE w/SIGN
 - 5 BRACE ROOF OVERHANG AND RECONNECT EXISTING COLUMN TO NEW CONCRETE PORCH
 - 6 STRIPE FOR ACCESSIBLE PARKING SPACE, SEE ALSO CIVIL ENGINEERING PLANS

- GENERAL NOTES**
1. CONTRACTOR TO VERIFY GRADES AND NOTIFY ARCHITECT OF ANY DISCREPANCIES PRIOR TO NEW RAMP CONSTRUCTION.
 2. "FE" IDENTIFIES THE LOCATION OF FIRE EXTINGUISHERS CABINETS; SEE DETAIL # SHEET A#.
 3. G.C. TO COORDINATE WITH OWNER ALL ELECTRICAL OUTLET NEEDS/LOCATIONS.
 4. G.C. TO COORDINATE WITH OWNER ALL FINISHES.
 5. PROVIDE MOISTURE RESISTANT DRYWALL AT ALL WET AREAS, INCLUDING BUT NOT LIMITED TO TOILET ROOMS, KITCHENS, AND JANITOR CLOSETS

PLUMBING FIXTURE REQUIREMENTS PER TABLE 2902.1

BUSINESS
 OCCUPANT LOAD: 12 OCCUPANTS
 PER 2902.2 EXCEPTION 2 - SEPARATE FACILITIES NOT REQUIRED FOR TOTAL OCCUPANT LOAD OF 15 OR FEWER

WATER CLOSETS REQUIRED: WATER CLOSETS PROVIDED
 MALE = 1 PER 25 = 0.24
 FEMALE = 1 PER 25 = 0.24
 TOTAL W.C. REQUIRED = 0.48 (1) 1 WC PROVIDED

LAVATORIES REQUIRED: LAVATORIES PROVIDED
 MALE = 1 PER 40 = 0.15
 FEMALE = 1 PER 25 = 0.30
 TOTAL LAVATORIES REQUIRED = 0.30 (1) 1 LAVATORY PROVIDED

DRINKING FOUNTAINS = PER 2902.6 DRINKING FOUNTAINS SHALL NOT BE REQUIRED FOR AN OCCUPANT LOAD OF 15 OR FEWER.
 OTHER: SERVICE SINK NOT REQUIRED FOR BUSINESS WITH AN OCCUPANT LOAD OF 15 OR FEWER.

OCCUPANT LOAD PER TABLE 1004.1.2
 TOTAL OCCUPANT LOAD = 12 OCCUPANTS

OCCUPANCY	SF	FLOOR AREA	CALC. OCC.	ASSIGNED OCC.
BUSINESS	1,145 SF	100/GROSS	12	0

EGRESS REQUIREMENTS

EGRESS WIDTH PER 1005.3

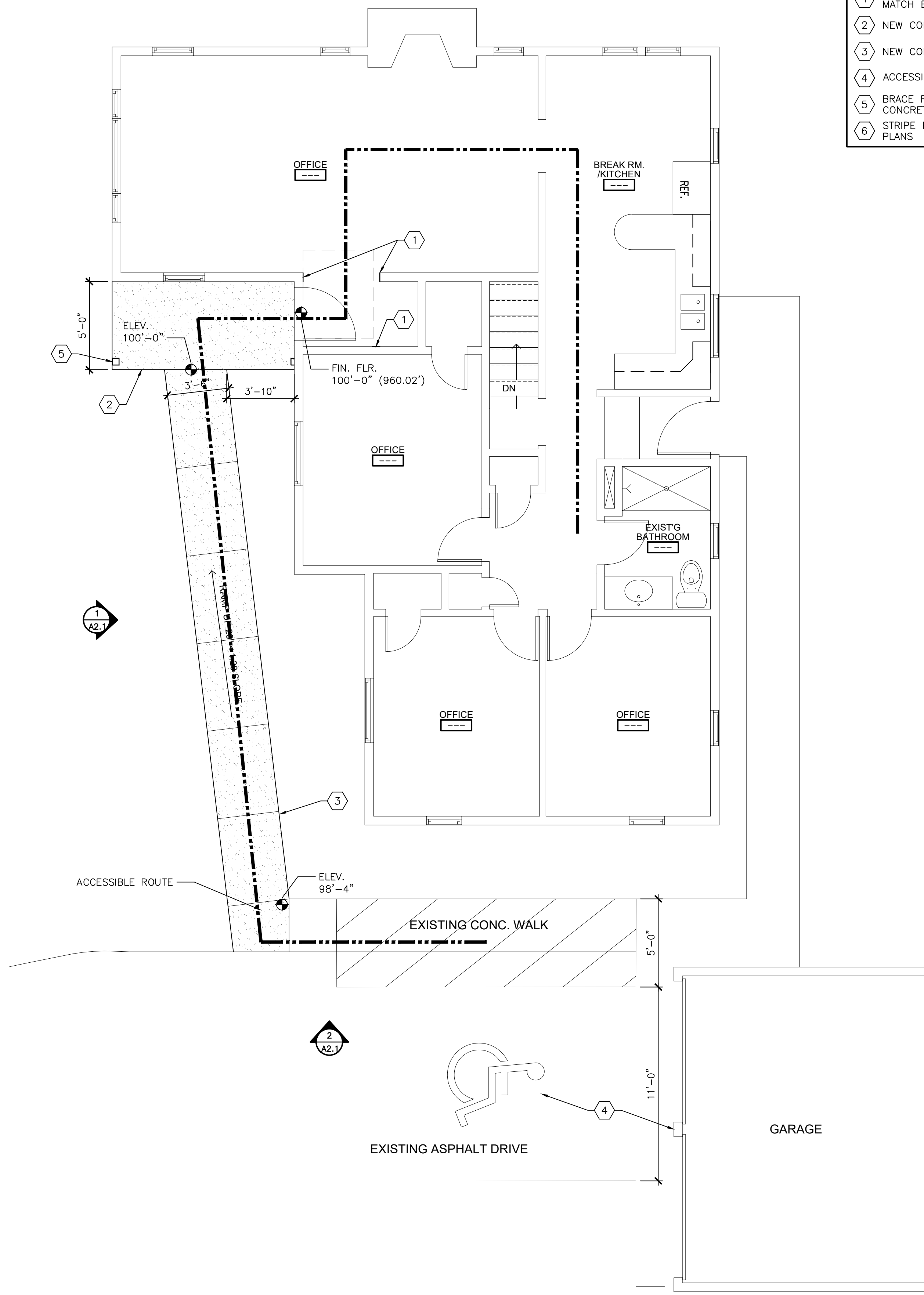
# OF OCCUPANTS	EGRESS WIDTH FACTOR	EGRESS WIDTH REQUIRED	EGRESS WIDTH PROVIDED
12	.2 INCHES PER OCCUPANT	2.4"	64"

NO. OF EXITS REQUIRED PER SECTION 1006 = 1
 NO. OF EXITS PROVIDED = 2
 MAXIMUM EXIT TRAVEL DISTANCE PER TABLE 1017.2 = 200' (w/out SPRINKLER)

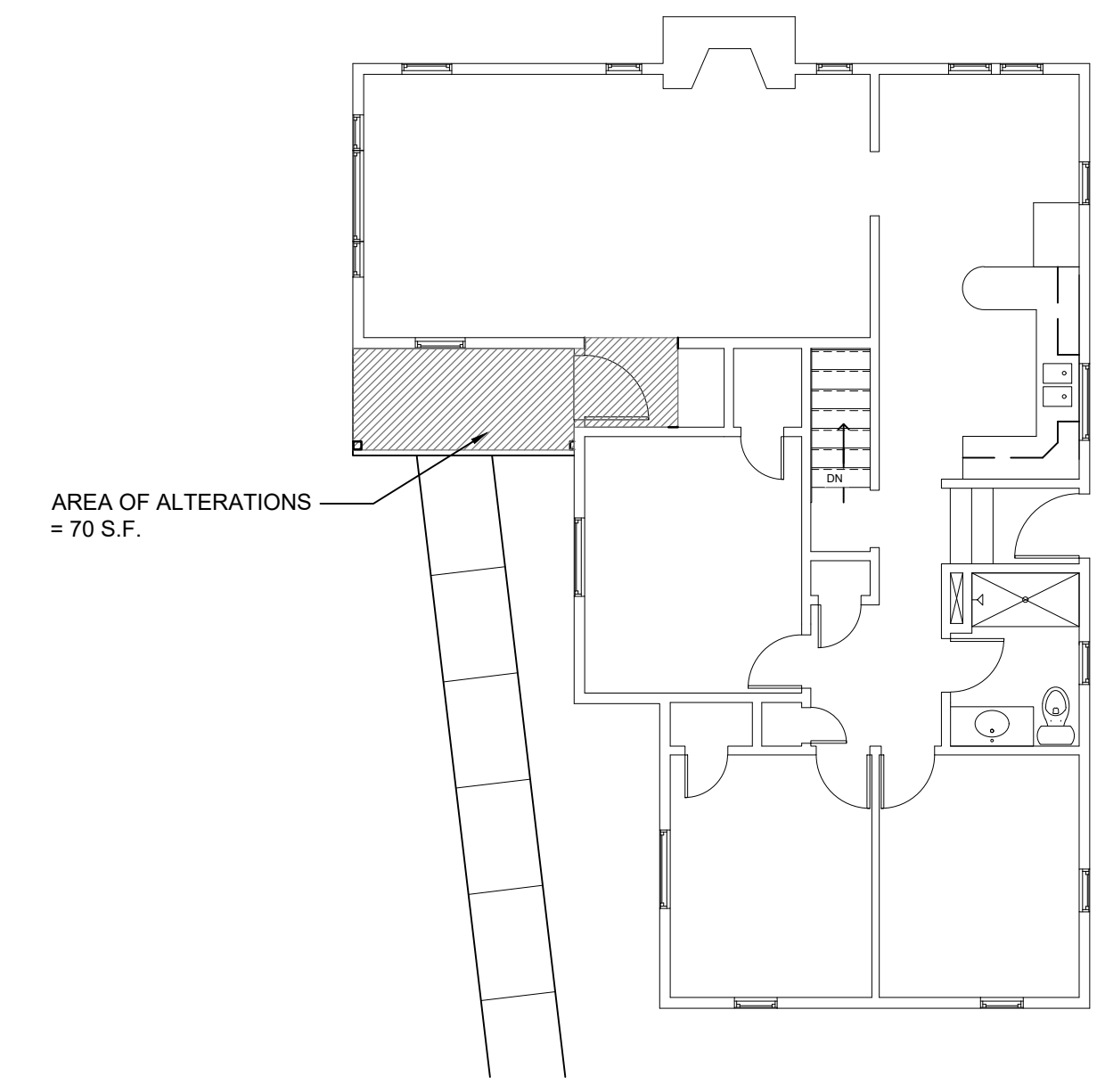
- GENERAL EGRESS NOTES**
1. PROVIDE DIRECTIONAL SIGNAGE INDICATING THE LOCATION OF ACCESSIBLE MEANS OF EGRESS AT ALL INACCESSIBLE DENOTED EXITS IN COMPLIANCE WITH IBC 1009.11
 2. EXIT AND EXIT ACCESS DOORS SHALL BE MARKED BY AN APPROVED EXIT SIGN READILY VISIBLE FROM ANY DIRECTION OF EGRESS TRAVEL. IN CASES WHERE THE EXIT OR THE PATH OF EGRESS TRAVEL IS NOT IMMEDIATELY VISIBLE TO THE OCCUPANTS, THE PATH OF EGRESS TRAVEL TO EXITS AND WITHIN EXITS SHALL BE MARKED BY READILY VISIBLE EXIT SIGNS TO CLEARLY INDICATE THE DIRECTION OF EGRESS TRAVEL. INTERVENING MEANS OF EGRESS DOORS WITHIN EXITS SHALL BE MARKED BY EXIT SIGNS. EXIT SIGN PLACEMENT SHALL BE SUCH THAT NO POINT IN AN EXIT ACCESS CORRIDOR IS MORE THAN 100 FEET FROM THE NEAREST VISIBLE EXIT SIGN.
 3. IN CASE OF POWER LOSS, ALL EXIT ACCESS SIGNAGE SHALL PROVIDE CONTINUED ILLUMINATION FOR 90 MINUTES MINIMUM.
 4. ALL EXIT PASSAGEWAYS AND STAIRWAYS SHALL BE PROVIDED WITH EMERGENCY EGRESS LIGHTING WITH A STAND-BY POWER SOURCE.
 5. ALL REQUIRED EXIT SIGNS SHALL BE LIGHTED AT ALL TIMES.

FIRE-RESISTANCE RATING SUMMARY PER IBC CHAPTER 6 - TABLE 601

CONSTRUCTION TYPE V-B	0
PRIMARY STRUCTURAL FRAME	0
BEARING WALLS	0
EXTERIOR	0
INTERIOR	0
NONBEARING WALLS	0
FLOOR CONSTRUCTION	0
ROOF CONSTRUCTION	0



FLOOR PLAN
 SCALE: 1/4" = 1'-0"
 2



KEY PLAN
 SCALE: 3/32" = 1'-0"
 1

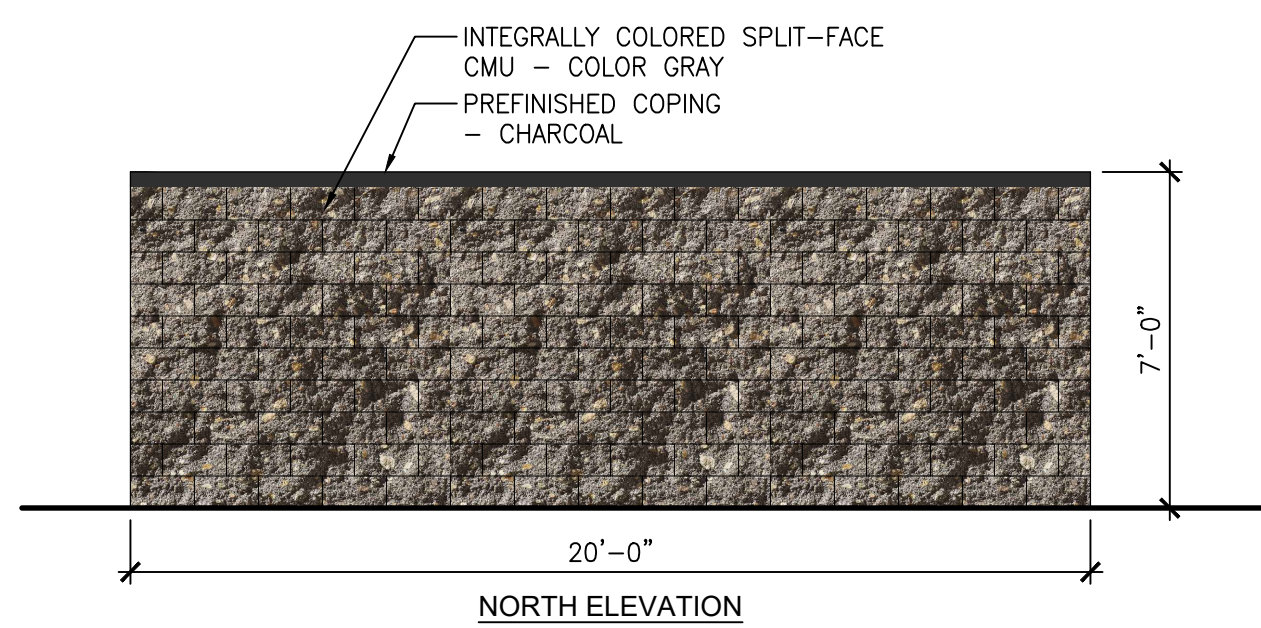
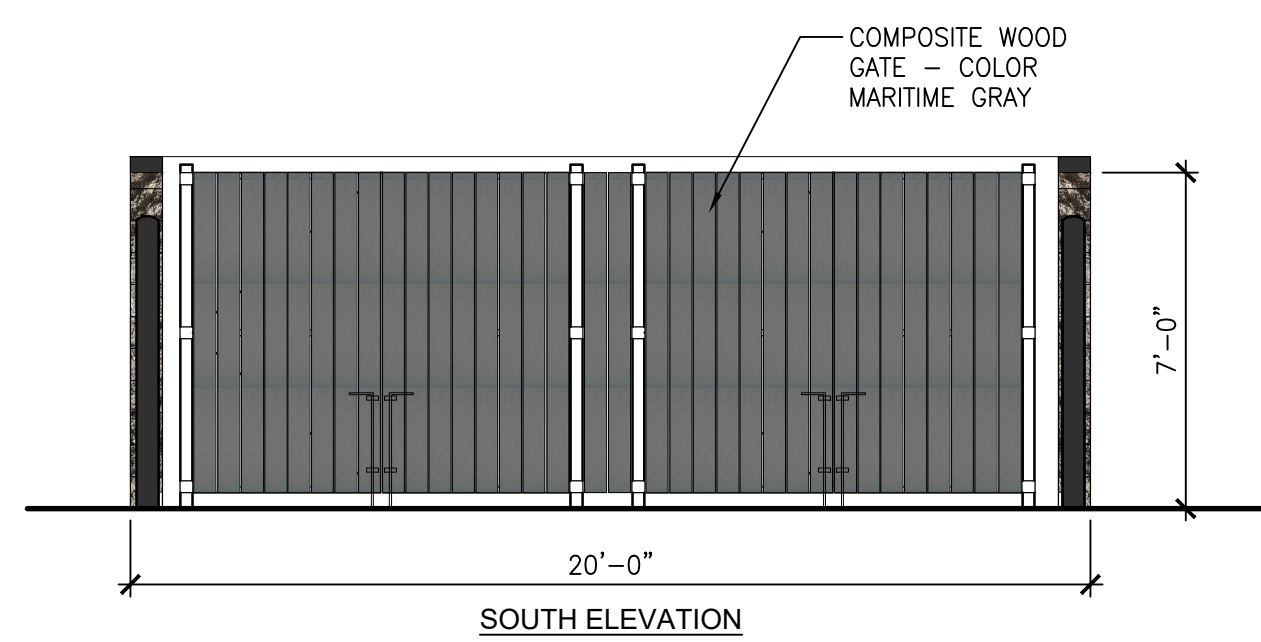
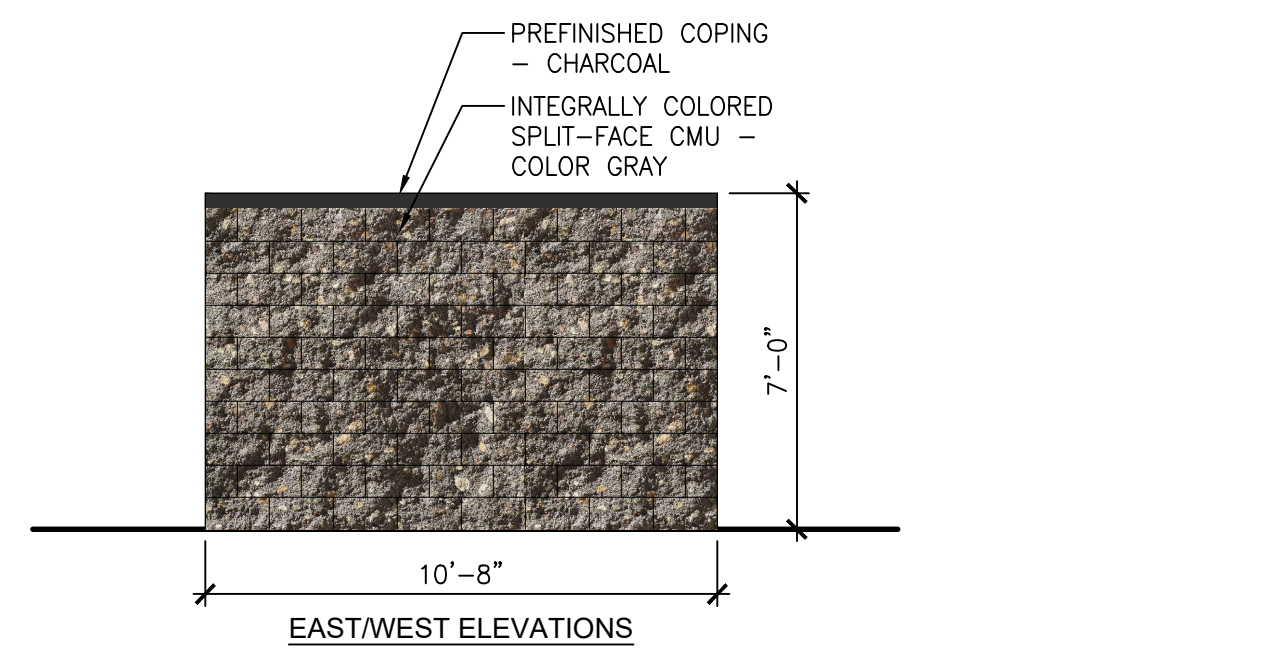
11.10.23 - ARCH. & SITE PLAN REVIEW

EXTERIOR ELEVATIONS



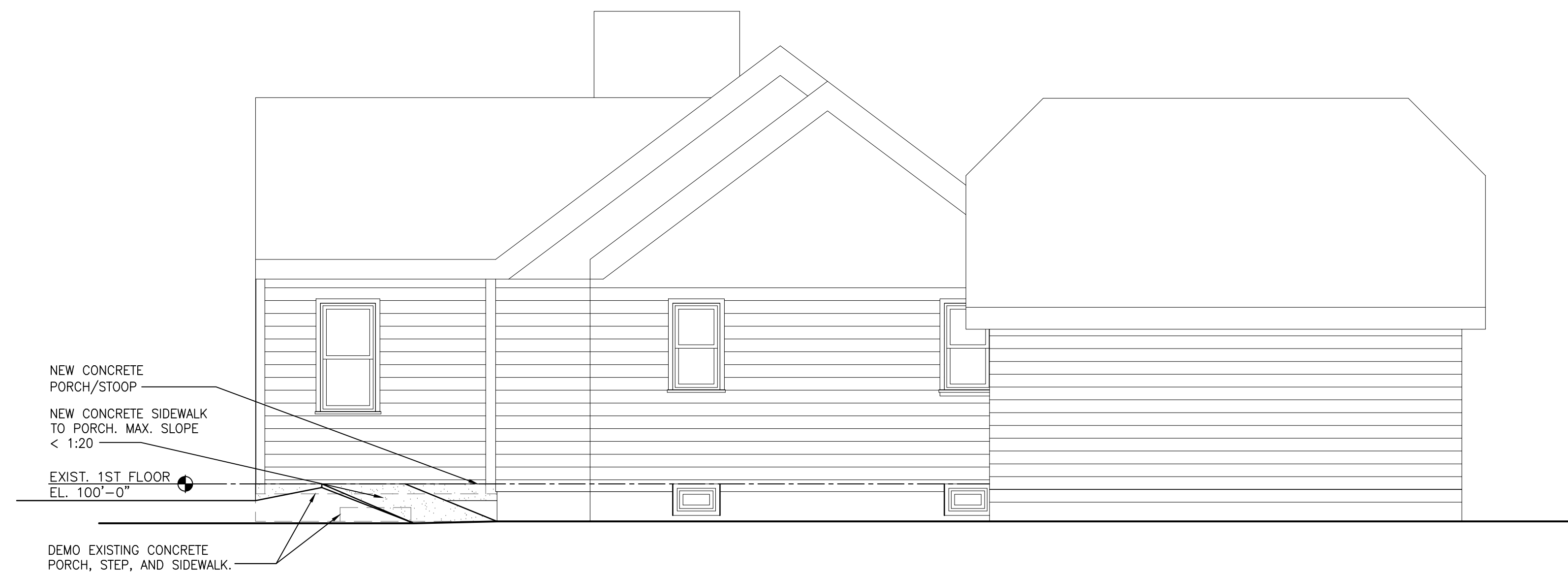
REFERENCE PHOTO - VIEW FROM MAIN STREET
SCALE: 1/4"=1'-0" (22x34); 1/8"=1'-0" (11x17)

3



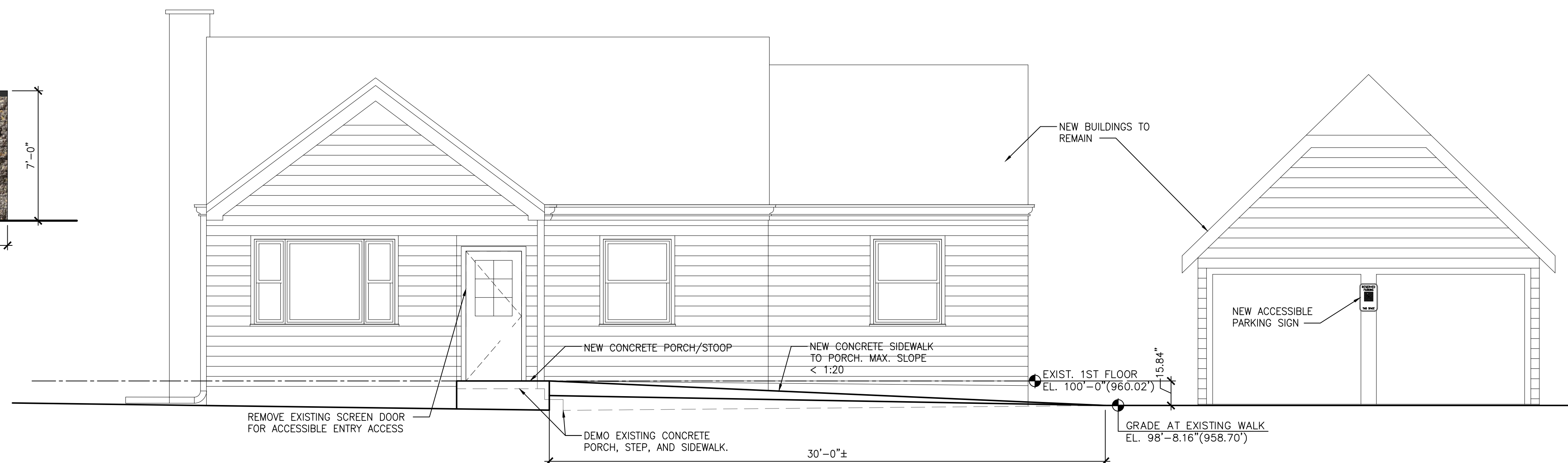
DUMPSTER ENCLOSURE ELEVATIONS
SCALE: 1/4"=1'-0" (22x34); 1/8"=1'-0" (11x17)

2



EAST EXTERIOR ELEVATION
SCALE: 1/4"=1'-0" (22x34); 1/8"=1'-0" (11x17)

2



SOUTH EXTERIOR ELEVATION
SCALE: 1/4"=1'-0" (22x34); 1/8"=1'-0" (11x17)

1

Drawn by	Checked by
SC/JMS	JMS

Revisions		
No.	Date	Description
	11.10.2023	Preliminary

Sheet No.

A2.1

11.10.23 - ARCH. & SITE PLAN REVIEW

