

McDONALD'S RESTAURANT

FINAL ENGINEERING PLANS
FOR
2340 E. MORELAND BOULEVARD
WAUKESHA, WI
WAUKESHA COUNTY
SITE CODE: 048-0107

BENCHMARK / CONTROL

SOURCE: BENCHMARKS ESTABLISH VIA TRIMBLE VRS NETWORK. DATUM IS NAVD83, GROUND SCALE FACTOR: 1.0000843019

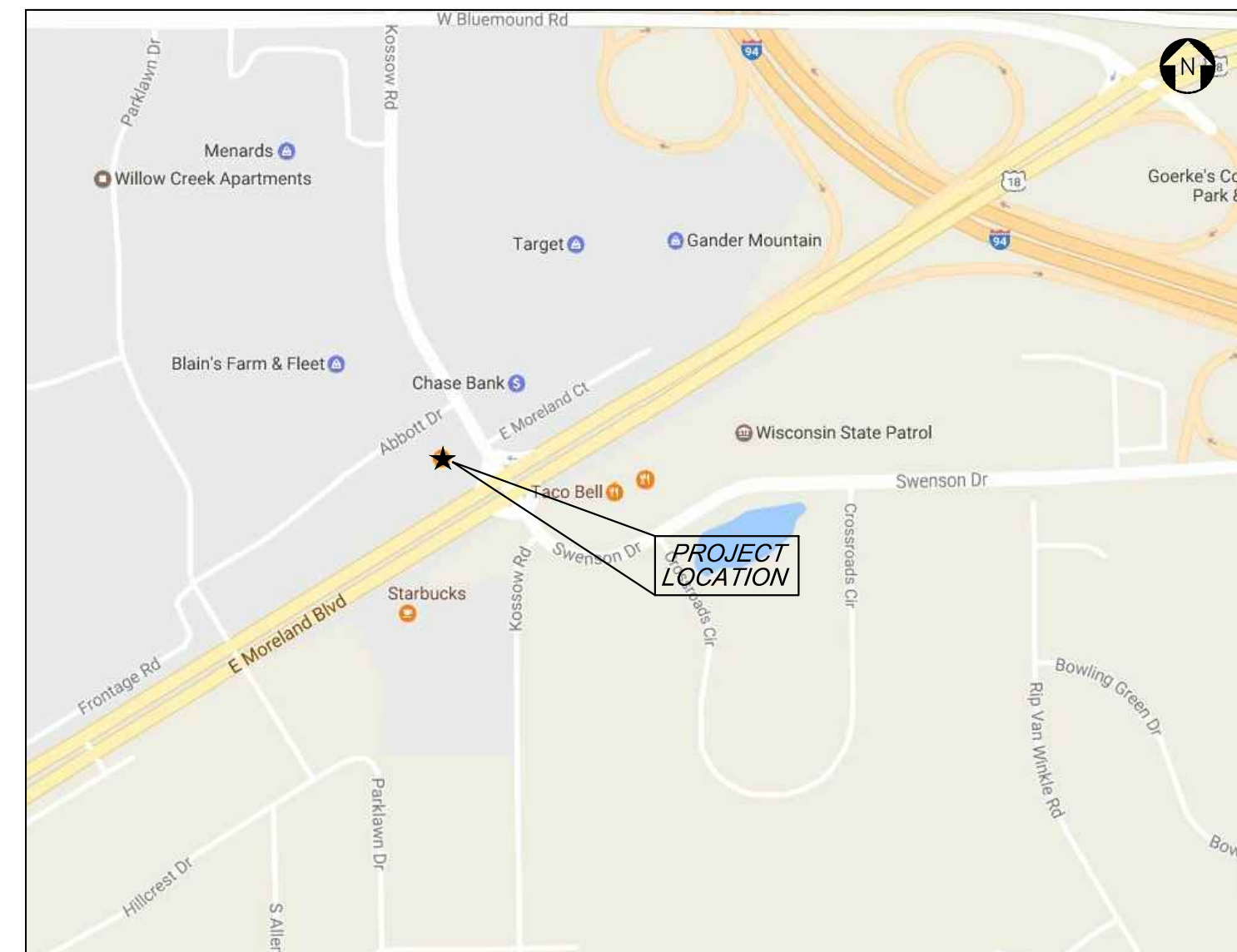
SITE:

STATION DESIGNATION: SBM #1
ESTABLISHED BY: V3 COMPANIES
DATE: 11/27/12

ELEVATION: 895.99 (MEASURED)
DATUM: NAVD83
DESCRIPTION: CUT SQUARE AT NORTHEAST CORNER OF COMED TRANSFORMER BASE AT NORTHEAST CORNER OF SITE.

STATION DESIGNATION: SBM #2
ESTABLISHED BY: V3 COMPANIES
DATE: 11/27/12

ELEVATION: 897.66 (MEASURED)
DATUM: NAVD83
DESCRIPTION: NORTHWEST FLANGE BOLT OF FIRST HYDRANT EAST OF KOSSOW RD. ON THE FRONTAGE ROAD.



LOCATION MAP
NO SCALE

DEVELOPER

McDonald's USA, LLC
711 Jorie Boulevard, 3rd Floor
Oak Brook, Illinois 60523
630 251 0445
Contact: Dawn Bourseau

THESE PLANS AND SPECIFICATIONS ARE THE PROPERTY OF McDONALD'S CORPORATION AND SHALL NOT BE REPRODUCED WITHOUT THEIR WRITTEN PERMISSION.

INDEX OF DRAWINGS

DWG. NO.	DESCRIPTION	REVISIONS					
		1	2	3	4	5	6
C-0.0	TITLE SHEET						
C-2.0	EROSION CONTROL PLAN						
C-2.1	EROSION CONTROL DETAILS						
C-3.0	SITE PLAN						
C-3.1	LAYOUT PLAN						
C-3.2	SIGNAGE PLAN						
C-4.0	GRADING PLAN						
C-5.0	UTILITY PLAN						
C-8.0	PHOTOMETRIC PLAN						
L-1.0	LANDSCAPE PLANS						

PROJECT TEAM		UTILITIES		APPROVAL / REVIEW	
ARCHITECT	McDONALD'S CORPORATION 1 McDONALD'S PLAZA OAK BROOK, ILLINOIS 60523 CONTACT: TERA O'MALLEY	ELECTRIC			
LANDSCAPE ARCHITECT	DANIEL WEINBACH & PARTNERS, LTD. 53 WEST JACKSON BOULEVARD, SUITE 250 CHICAGO, ILLINOIS 60604 312 427 2888 CONTACT: BRAD MEYERHOFF	WATER & SEWER			
ENGINEER	V3 COMPANIES 7325 JANES AVENUE WOODRIDGE, ILLINOIS 60517 630 724 9200 CONTACT: ANDREW UTTAN, P.E., LEED AP	GAS			
SURVEYOR	V3 COMPANIES 7325 JANES AVENUE WOODRIDGE, ILLINOIS 60517 630 724 9200 CONTACT: CHUCK BARTOSZ, PLS				
PHOTOMETRIC DESIGN	SECURITY LIGHTING DESIGN 1085 JOHNSON DRIVE BUFFALO GROVE, ILLINOIS 60089 847 279 0627 CONTACT: MARK WERTH				

811 • (800) 242-8511
www.DiggersHotline.com

PREPARED FOR: **McDonald's USA, LLC**
 7325 Janes Avenue
 Woodridge, IL 60517
 630.724.9200 phone
 630.724.9202 fax
 www.v3co.com

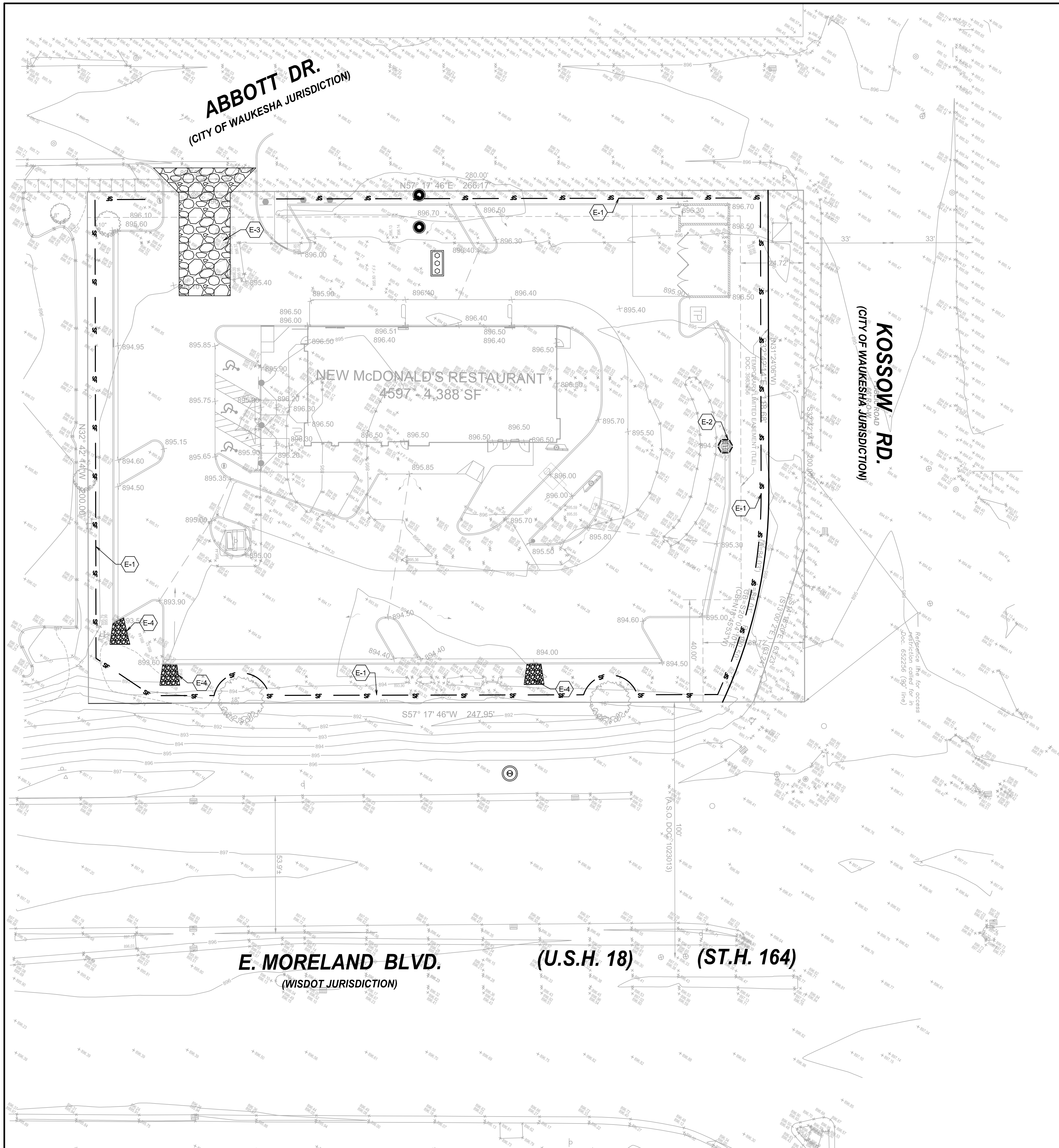
PREPARED BY: **V3 Companies**
 7325 Janes Avenue
 Woodridge, IL 60517
 630.724.9200 phone
 630.724.9202 fax
 www.v3co.com

DATE: _____ REV: _____ BY: _____

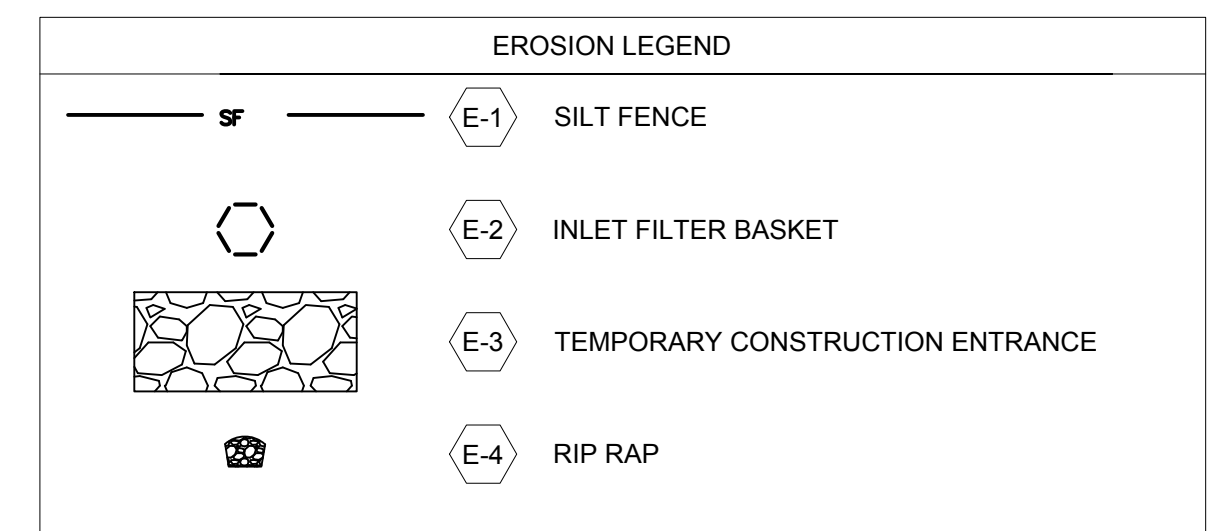
DESCRIPTION: TITLE SHEET

SHEET NO: **C-0.0**
TITLE SHEET

06240.31A - TITLE SHEET



- EROSION CONTROL NOTES:**
1. CONTRACTOR TO INSTALL CONSTRUCTION ENTRANCE PRIOR TO COMMENCEMENT OF WORK.
 2. CONTRACTOR TO INSTALL SILT FENCE PRIOR TO COMMENCEMENT OF ANY EARTHWORK. CONTRACTOR TO MAINTAIN SILT FENCE AS SHOWN AND INSTALL ADDITIONAL SILT FENCE WHEREVER NECESSARY THROUGHOUT CONSTRUCTION ACTIVITIES TO MINIMIZE SOIL EROSION.
 3. CONTRACTOR TO INSTALL INLET PROTECTION ON ALL OPEN LID STRUCTURES. SEE INLET PROTECTION DETAIL ON SHEET C-2.2.
 4. EROSION CONTROL BLANKET (ROLLMAX ERONET S150 OR APPROVED EQUAL) SHALL BE PLACED ON ALL AREAS WITH SIDE SLOPES OF 4:1 OR GREATER, AND IN BOTTOM AND SIDE SLOPES OF SWALES WHERE NOTED.
 5. ALL SEDIMENT AND EROSION CONTROL MEASURES IN AND AROUND THE PROPOSED IMPROVEMENTS ARE TO REMAIN IN PLACE AND TO BE MAINTAINED THROUGHOUT CONSTRUCTION ACTIVITIES UNTIL THE PROPOSED IMPROVEMENTS ARE COMPLETED AND THE SITE ADEQUATELY STABILIZED.



NO.	DATE	DESCRIPTION	BY

PREPARED BY:

V3 Companies
 7325 Janes Avenue
 Woodridge, IL 60517
 630.724.9200 phone
 630.724.9202 fax
 www.v3co.com

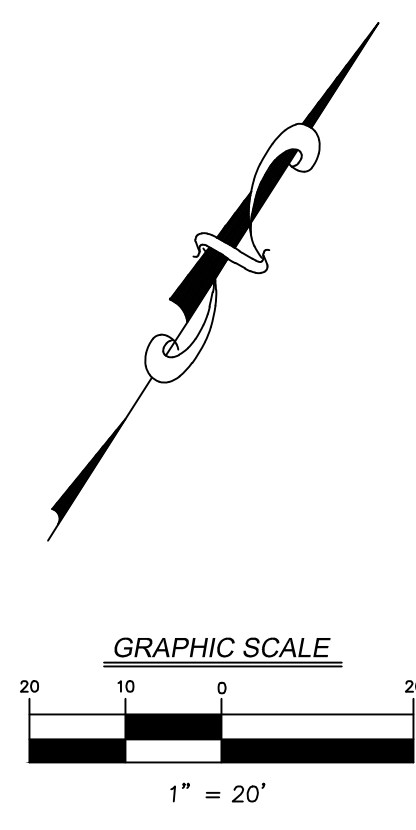
Visio, Vertere, Virtute... The Vision to Transform with Excellence

PREPARED FOR:

M. McDonald's USA, LLC

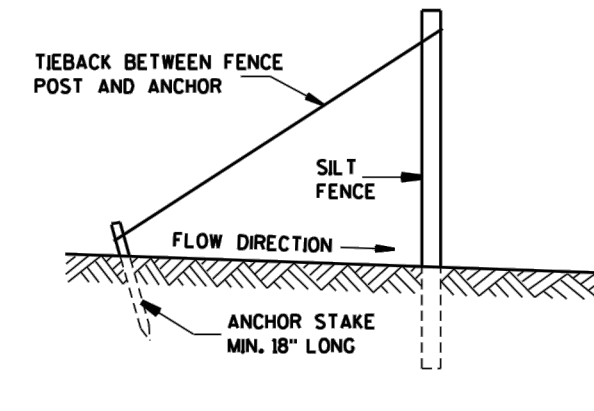
These drawings and specifications are the confidential and proprietary property of McDonald's USA, LLC and shall not be copied or reproduced for use on this specific site in conjunction with its issue date and are not suitable for use on a different site or at a later time. Use of the services of properly licensed architects and engineers. Reproduction of the contract documents for reuse on another project is not authorized.

TITLE	DRAWN BY	SITING DATE	REVIEWED BY	DATE ISSUED	SITE ADDRESS
EROSION CONTROL PLAN	JWG	01-19-17	JWG	01-19-17	2340 E. MORELAND BLVD., WAUKESHA, WI
SHEET NO. C-2.1	EROSION CONTROL PLAN				

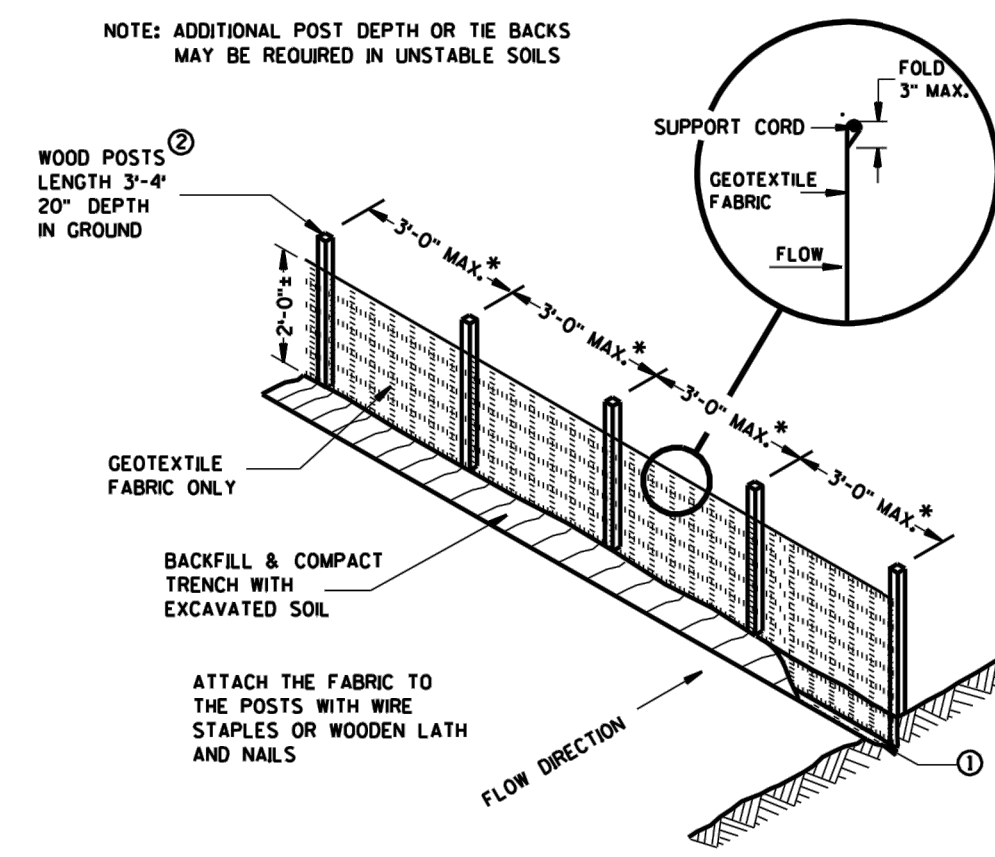


GENERAL NOTES

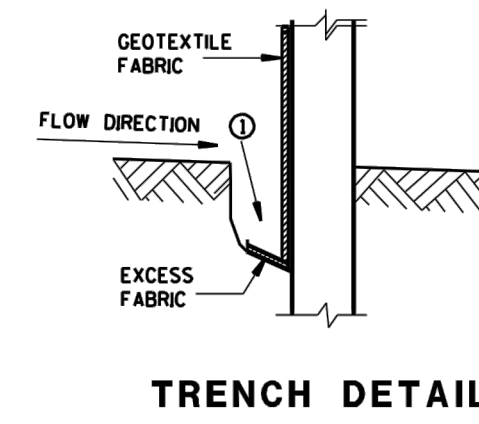
- TRENCH SHALL BE A MINIMUM OF 4" WIDE & 6" DEEP TO BURY AND ANCHOR THE GEOTEXTILE FABRIC. FOLD MATERIAL TO FIT TRENCH AND BACKFILL & COMPACT TRENCH WITH EXCAVATED SOIL.
- WOOD POSTS SHALL BE A MINIMUM SIZE OF 1/2" X 1/2" OF OAK OR HICKORY.
- CONSTRUCT SILT FENCE FROM A CONTINUOUS ROLL IF POSSIBLE BY CUTTING LENGTHS TO AVOID JOINTS. IF A JOINT IS NECESSARY USE ONE OF THE FOLLOWING TWO METHODS: A) TWIST METHOD -- OVERLAP THE END POSTS AND TWIST OR ROTATE, AT LEAST 180 DEGREES; B) HOOK METHOD -- HOOK THE END OF EACH SILT FENCE LENGTH.



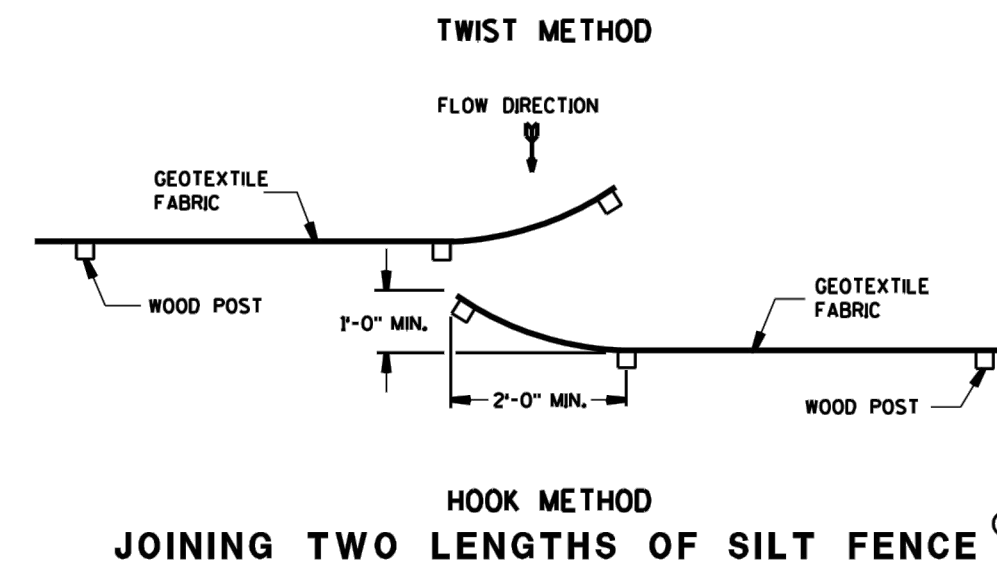
SILT FENCE TIE BACK (WHEN ADDITIONAL SUPPORT REQUIRED)



SILT FENCE



TRENCH DETAIL

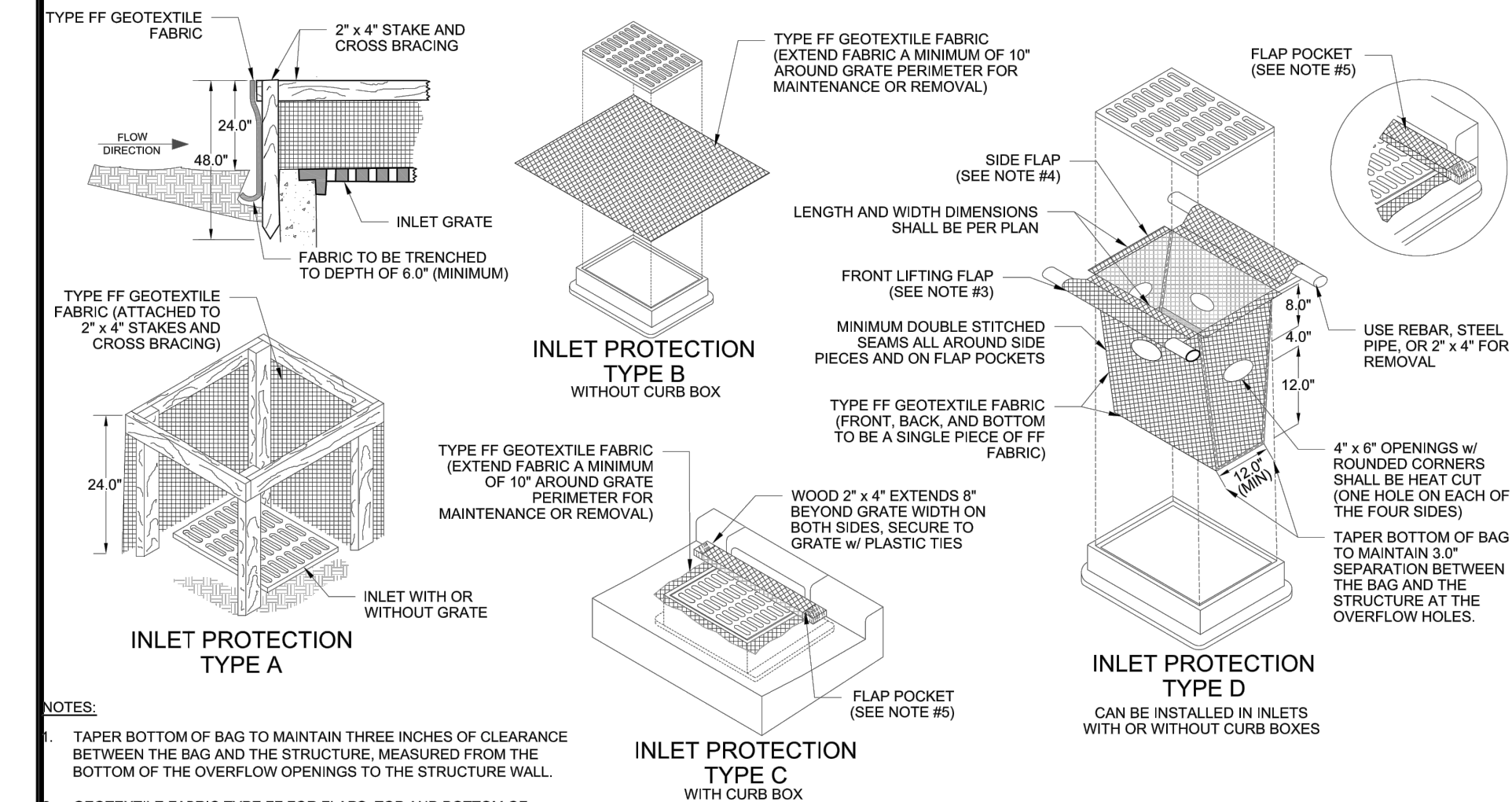


JOINING TWO LENGTHS OF SILT FENCE

This drawing based on Wisconsin Department of Transportation Standard Detail Drawing 8 E 9-6.

SILT FENCE

FIGURE 1. INLET PROTECTION TYPES A, B, C AND D



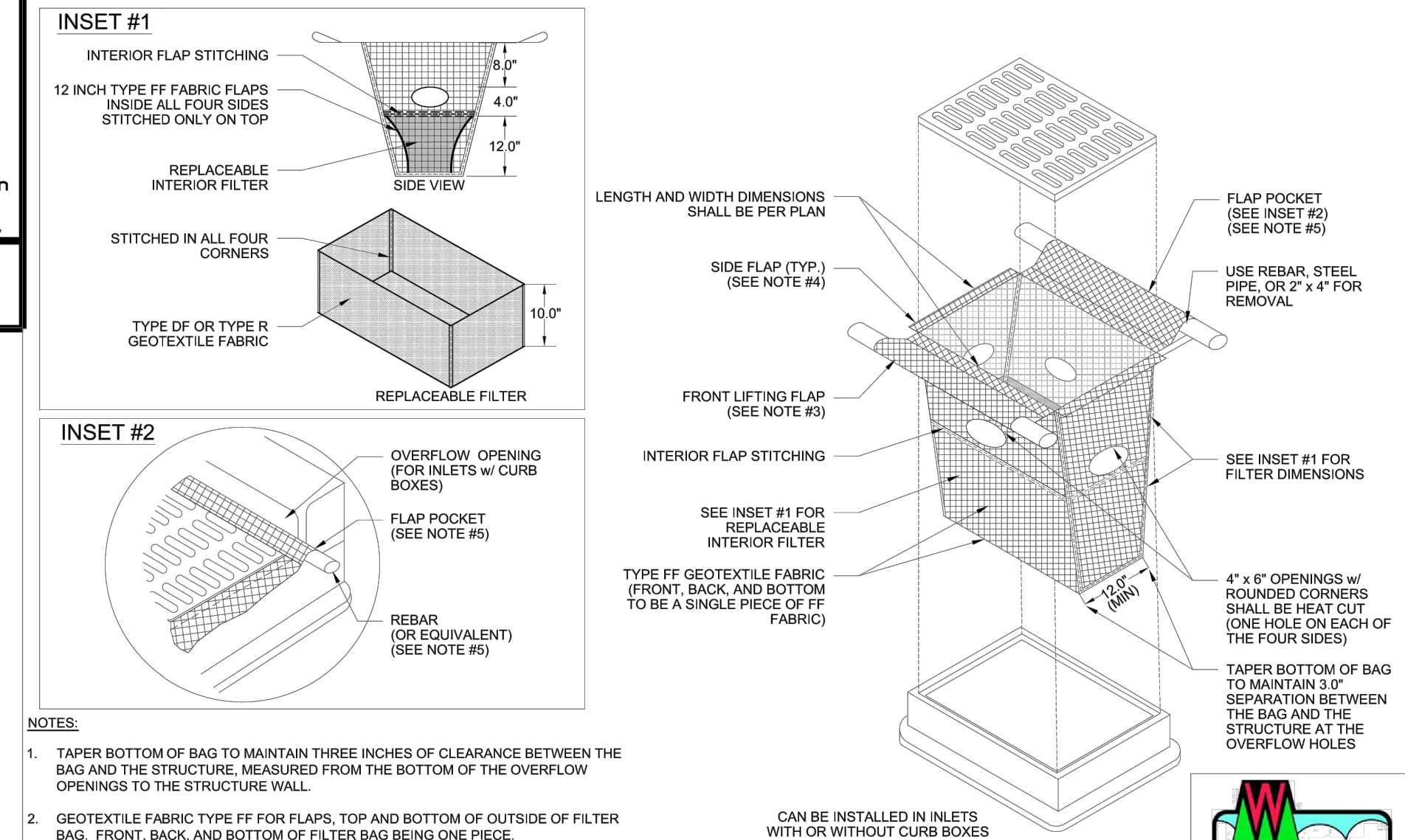
- NOTES:**
- TAPER BOTTOM OF BAG TO MAINTAIN THREE INCHES OF CLEARANCE BETWEEN THE BAG AND THE STRUCTURE, MEASURED FROM THE BOTTOM OF THE OVERFLOW OPENINGS TO THE STRUCTURE WALL.
 - GEOTEXTILE FABRIC TYPE FF FOR FLAPS, TOP AND BOTTOM OF OUTSIDE OF FILTER BAG. FRONT, BACK, AND BOTTOM OF FILTER BAG BEING ONE PIECE.
 - FRONT LIFTING FLAP IS TO BE USED WHEN REMOVING AND MAINTAINING FILTER BAG.
 - SIDE FLAPS SHALL BE A MAXIMUM OF TWO INCHES LONG. FOLD THE FABRIC OVER AND REINFORCE WITH MULTIPLE STITCHES.
 - FLAP POCKETS SHALL BE LARGE ENOUGH TO ACCEPT WOOD 2" X 4". THE REBAR, STEEL PIPE, OR WOOD SHALL BE INSTALLED IN THE REAR FLAP AND SHALL NOT BLOCK THE TOP HALF OF THE CURB FACE OPENING.

- MAINTENANCE NOTES:**
- WHEN REMOVING OR MAINTAINING INLET PROTECTION, CARE SHALL BE TAKEN SO THAT THE SEDIMENT TRAPPED IN THE FABRIC DOES NOT FALL INTO THE STRUCTURE. MATERIAL THAT HAS FALLEN INTO THE INLET SHALL BE IMMEDIATELY REMOVED.



1060 TECHNICAL STANDARD NO. 08/2014 REVISION DATE NOT TO SCALE

FIGURE 2. INLET PROTECTION TYPE D-M

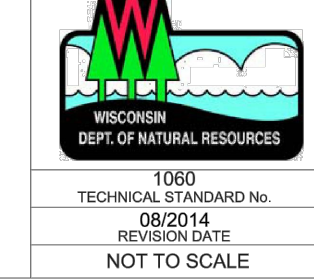


- INSET #1**
- INTERIOR FLAP STITCHING
 - 12 INCH TYPE FF FABRIC FLAPS INSIDE ALL FOUR SIDES STITCHED ONLY ON TOP
 - REPLACEABLE INTERIOR FILTER
 - STITCHED IN ALL FOUR CORNERS
 - TYPE DF OR TYPE R GEOTEXTILE FABRIC

- INSET #2**
- OVERFLOW OPENING (FOR INLETS W/ CURB BOXES)
 - FLAP POCKET (SEE NOTE #5)
 - REBAR (OR EQUIVALENT) (SEE NOTE #5)

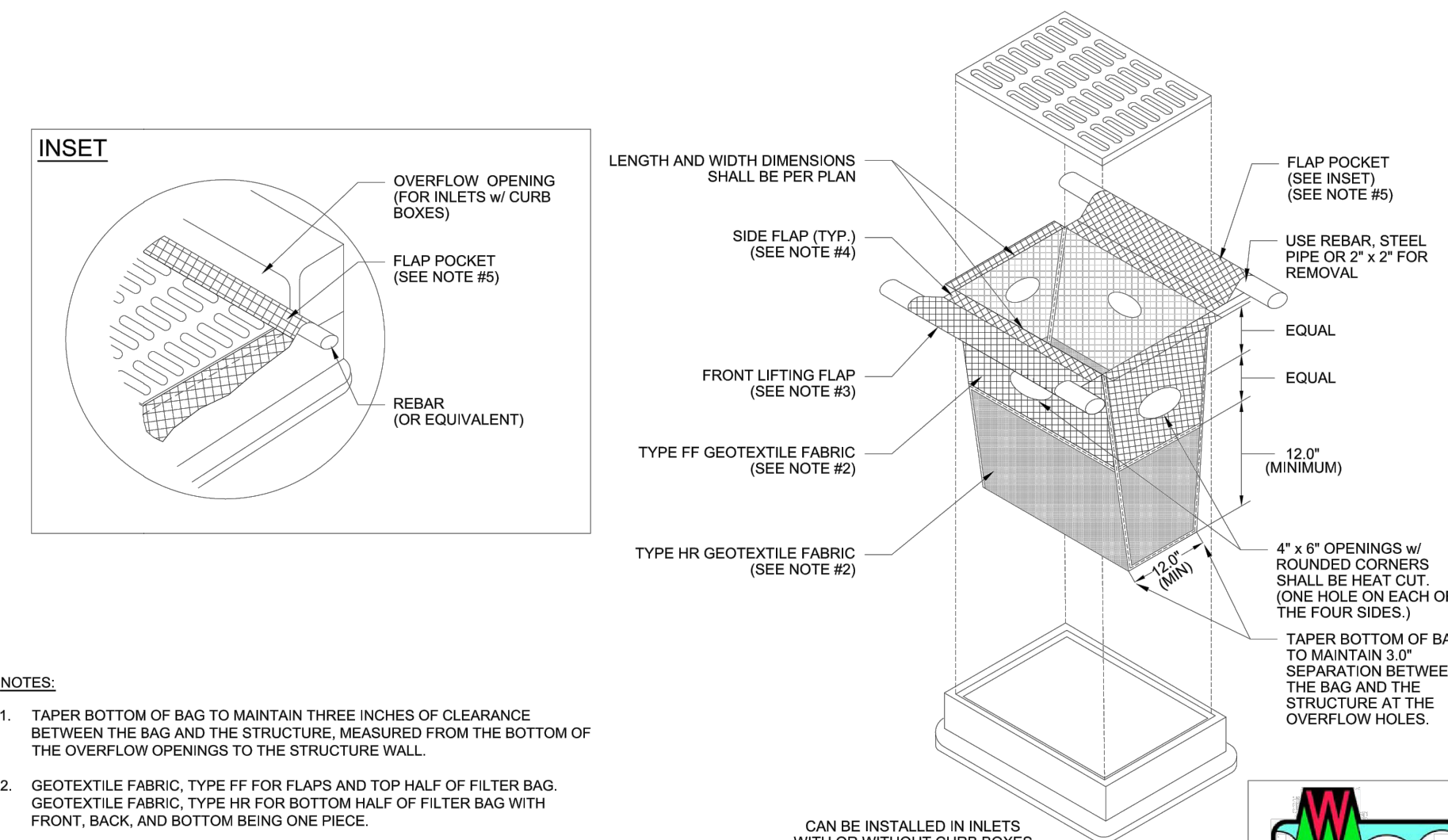
- NOTES:**
- TAPER BOTTOM OF BAG TO MAINTAIN THREE INCHES OF CLEARANCE BETWEEN THE BAG AND THE STRUCTURE, MEASURED FROM THE BOTTOM OF THE OVERFLOW OPENINGS TO THE STRUCTURE WALL.
 - GEOTEXTILE FABRIC TYPE FF FOR FLAPS, TOP AND BOTTOM OF OUTSIDE OF FILTER BAG. FRONT, BACK, AND BOTTOM OF FILTER BAG BEING ONE PIECE.
 - FRONT LIFTING FLAP IS TO BE USED WHEN REMOVING AND MAINTAINING FILTER BAG.
 - SIDE FLAPS SHALL BE A MAXIMUM OF TWO INCHES LONG. FOLD THE FABRIC OVER AND REINFORCE WITH MULTIPLE STITCHES.
 - FLAP POCKETS SHALL BE LARGE ENOUGH TO ACCEPT WOOD 2" X 4". THE REBAR, STEEL PIPE, OR WOOD SHALL BE INSTALLED IN THE REAR FLAP AND SHALL NOT BLOCK THE TOP HALF OF THE CURB FACE OPENING.

- MAINTENANCE NOTES:**
- WHEN REMOVING OR MAINTAINING INLET PROTECTION, CARE SHALL BE TAKEN SO THAT THE SEDIMENT TRAPPED IN THE FABRIC DOES NOT FALL INTO THE STRUCTURE. MATERIAL THAT HAS FALLEN INTO THE INLET SHALL BE IMMEDIATELY REMOVED.



1060 TECHNICAL STANDARD NO. 08/2014 REVISION DATE NOT TO SCALE

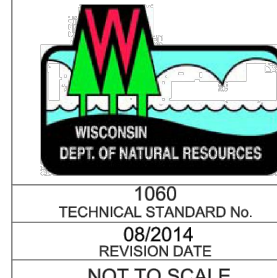
FIGURE 3. INLET PROTECTION TYPE D-HR



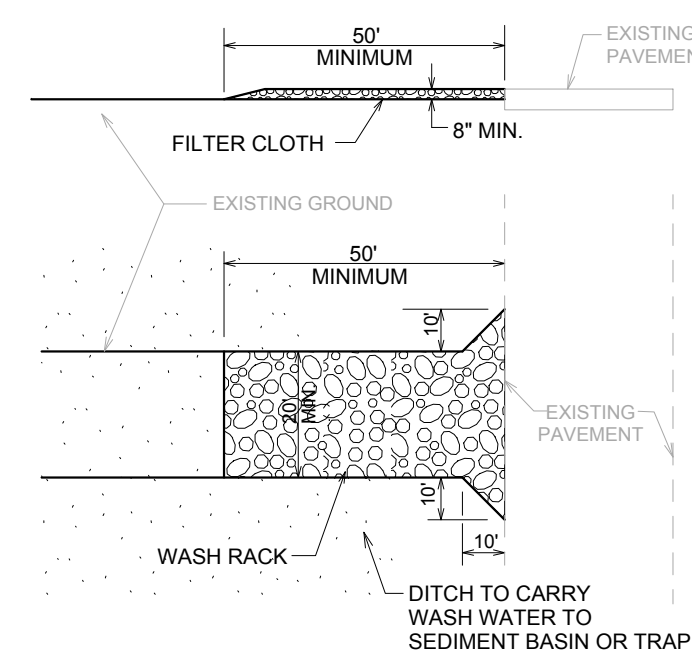
- INSET**
- OVERFLOW OPENING (FOR INLETS W/ CURB BOXES)
 - FLAP POCKET (SEE NOTE #5)
 - REBAR (OR EQUIVALENT)

- NOTES:**
- TAPER BOTTOM OF BAG TO MAINTAIN THREE INCHES OF CLEARANCE BETWEEN THE BAG AND THE STRUCTURE, MEASURED FROM THE BOTTOM OF THE OVERFLOW OPENINGS TO THE STRUCTURE WALL.
 - GEOTEXTILE FABRIC, TYPE FF FOR FLAPS AND TOP HALF OF FILTER BAG. GEOTEXTILE FABRIC, TYPE HR FOR BOTTOM HALF OF FILTER BAG WITH FRONT, BACK, AND BOTTOM BEING ONE PIECE.
 - FRONT LIFTING FLAP IS TO BE USED WHEN REMOVING AND MAINTAINING FILTER BAG.
 - SIDE FLAPS SHALL BE A MAXIMUM OF TWO INCHES LONG. FOLD THE FABRIC OVER AND REINFORCE WITH MULTIPLE STITCHES.
 - FLAP POCKETS SHALL BE LARGE ENOUGH TO ACCEPT WOOD 2" X 2". THE REBAR, STEEL PIPE, OR WOOD SHALL BE INSTALLED IN THE REAR FLAP AND SHALL NOT BLOCK THE TOP HALF OF THE CURB FACE OPENING.

- MAINTENANCE NOTES:**
- WHEN REMOVING OR MAINTAINING INLET PROTECTION, CARE SHALL BE TAKEN SO THAT THE SEDIMENT TRAPPED IN THE FABRIC DOES NOT FALL INTO THE STRUCTURE. MATERIAL THAT HAS FALLEN INTO THE INLET SHALL BE IMMEDIATELY REMOVED.



1060 TECHNICAL STANDARD NO. 08/2014 REVISION DATE NOT TO SCALE

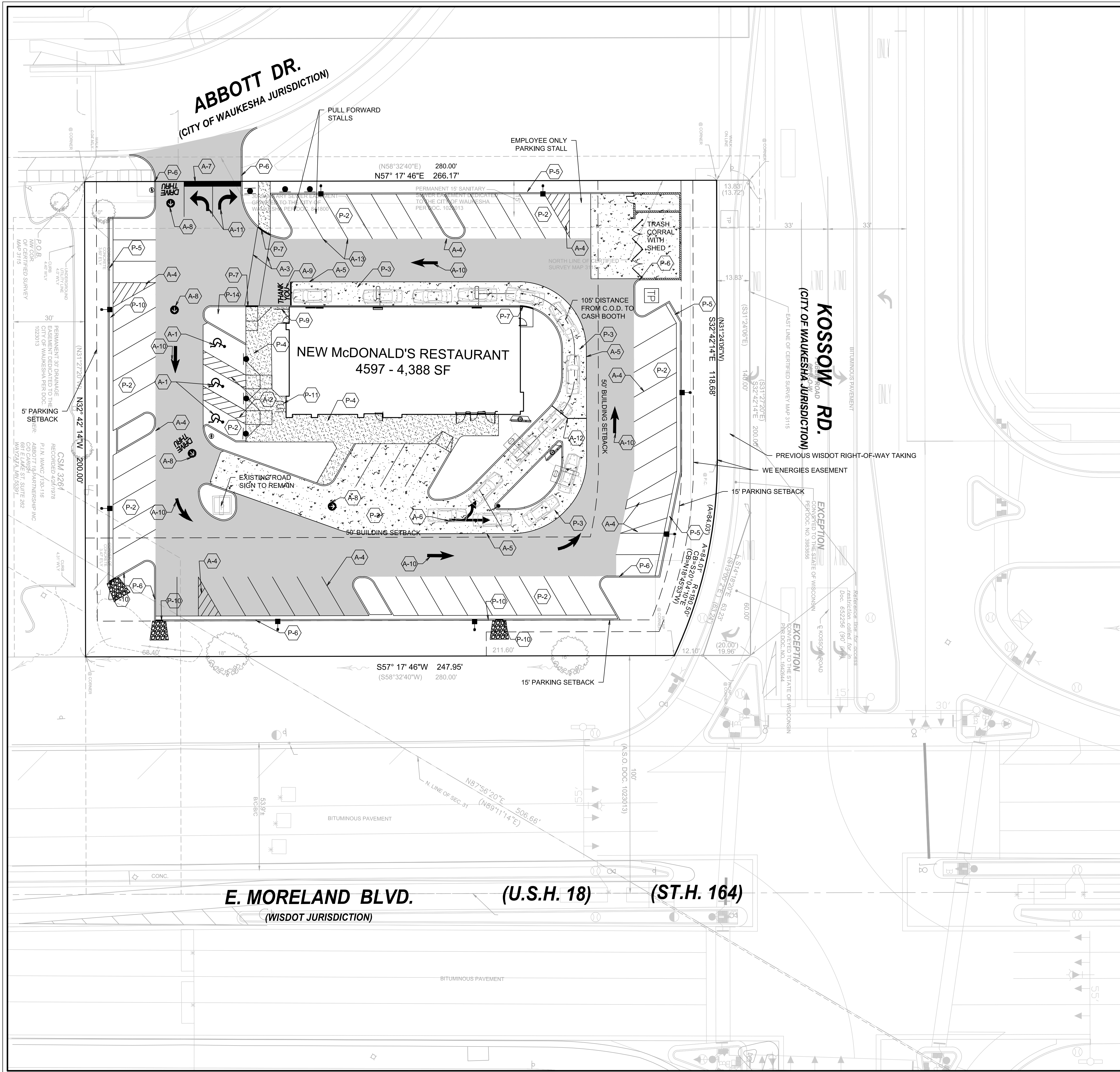


CONSTRUCTION ENTRANCE SPECIFICATIONS

- STONE SIZE - USE 2" STONE OR RECLAIMED OR RECYCLED CONCRETE EQUIVALENT.
- THICKNESS - NOT LESS THAN EIGHT (8) INCHES.
- FILTER CLOTH - SHALL BE PLACED OVER THE ENTIRE AREA PRIOR TO PLACING OF STONE.
- MAINTENANCE - THE ENTRANCE SHALL BE MAINTAINED IN A CONDITION WHICH WILL PREVENT TRACKING OR FLOWING OF SEDIMENT ONTO PUBLIC RIGHTS-OF-WAY. THIS MAY REQUIRE PERIODIC TOP DRESSING WITH ADDITIONAL STONE AS CONDITIONS DEMAND AND REPAIR AND/OR CLEANOUT OF ANY MEASURES USED TO TRAP SEDIMENT. ALL SEDIMENT SPILLED, DROPPED, SPILLED, DROPPED, WASHED OR TRACKED ONTO PUBLIC RIGHTS-OF-WAYS MUST BE REMOVED IMMEDIATELY.
- WASHING - WHEELS SHALL BE CLEANED TO REMOVE SEDIMENT PRIOR TO ENTRANCE ONTO PUBLIC RIGHT-OF-WAY. WHEN WASHING IS REQUIRED, IT SHALL BE DONE ON AN AREA STABILIZED WITH STONE AND WHICH DRAINS INTO AN APPROVED SEDIMENT TRAPPING DEVICE.
- PERIODIC INSPECTION AND NEEDED MAINTENANCE SHALL BE PROVIDED AFTER EACH RAIN.

STABILIZED CONSTRUCTION ENTRANCE (TYPICAL)

BY																				
DESCRIPTION																				
DATE																				
REV																				
<p>PREPARED BY: V3 Companies 7325 Janes Avenue Woodridge, IL 60517 630.724.9200 phone 630.724.9202 fax www.v3co.com</p>																				
<p>PREPARED FOR: McDonald's USA, LLC These drawings and specifications are the confidential and proprietary property of McDonald's USA, LLC and shall not be copied or reproduced without the written consent of McDonald's USA, LLC. Use of these drawings for any other project is strictly prohibited. Use of these drawings for use on a different site or at a later time, without the written consent of the engineer, is prohibited. Reproduction or use of these drawings for any other project is strictly prohibited. The contract documents for reuse on another project is not authorized.</p>																				
DRAWN BY		STG		DATE		01/19/17		REVIEWED BY		JWG		DATE ISSUED		01/19/17						
TITLE		EROSION CONTROL DETAILS		DESCRIPTION		MCDONALD'S - WAUKESHA, WI		SITE ID		048-0107		SITE ADDRESS		2340 E. MORELAND BLVD., WAUKESHA, WI						
SHEET NO.		C-2.2		DRAWING NO.		048-0107		PROJECT NO.												



PAVING LEGEND

P-1	HEAVY BITUMINOUS PAVEMENT
P-2	STANDARD DUTY PAVEMENT
P-3	CONCRETE PAVEMENT
P-4	CONCRETE SIDEWALK

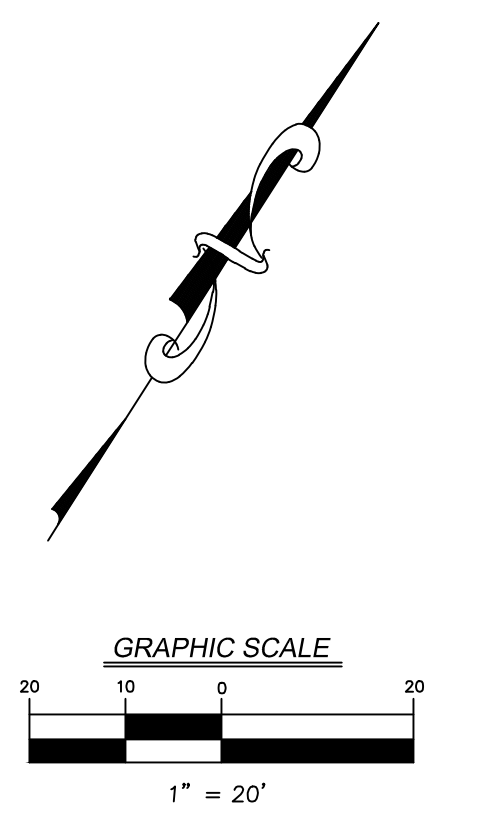
STRIPING LEGEND

A-1	ADA ACCESSIBLE STALL WITH SYMBOL PER ADA REQUIREMENTS
A-2	ACCESSIBLE AISLE - 4" YELLOW STRIPES @ 45°, 2' O.C.
A-3	6" WIDE PEDESTRIAN ACCESS AISLE WITH 4" WHITE STRIPES
A-4	4" WIDE PARKING STRIPE OR STRIPED AREA - 4" WHITE STRIPES @ 45°, 2' O.C.
A-5	6" YELLOW DRIVE-THRU STRIPE
A-6	DOUBLE HEADED ARROW PAINTED YELLOW
A-7	2' WIDE WHITE STOP BAR
A-8	"DRIVE-THRU" W/ARROW YELLOW PAVEMENT MARKING
A-9	"THANK YOU" YELLOW PAVEMENT MARKING WITH 6" DOUBLE PAINTED YELLOW STRIPE
A-10	YELLOW PARKING LOT DIRECTIONAL ARROWS
A-11	WHITE INGRESS / EGRESS ARROWS
A-12	6" WIDE YELLOW MERGE STRIPE
A-13	6" YELLOW STRIPE

SITE DATA

STREET LOCATION: 2340 E. MORELAND BOULEVARD, WAUKESHA, WI 53186
 SITE AREA: 52,751 SF (1.21 AC.)
 CURRENT ZONING: B-5 COMMUNITY BUSINESS
 BUILDING AREA: 4,388 SF

REQUIREMENTS	REQUIRED	PROVIDED
ZONING REQUIREMENTS		
LANDSCAPE SETBACKS		
NORTH SIDE	10'	5.0'
WEST SIDE	10'	9.6'
EAST SIDE	10'	15'
SOUTH SIDE	10'	15'
INTERIOR LANDSCAPE		
BUILDING SETBACKS		
NORTH SIDE	50'	52.8'
WEST SIDE	10'	84.6'
EAST SIDE	50'	95.3'
SOUTH SIDE	50'	100.4'
PARKING STALL SIZE	9'x18'	9'x18'
DRIVE AISLE WIDTH		
ONE WAY (60° PARKING)	X'	18', 20'
TWO WAY (90° PARKING)	N/A	
PARKING		
(1 STALL/100 SF GROSS FLOOR AREA)	44 STALLS	55 STANDARD 3 ACCESSIBLE 58 TOTAL
PERVIOUS/IMPERVIOUS AREAS		
PERVIOUS AREA		13,828.1 SF
IMPERVIOUS AREA		38,922.5 SF
GREEN SPACE PERCENTAGE		26.2%



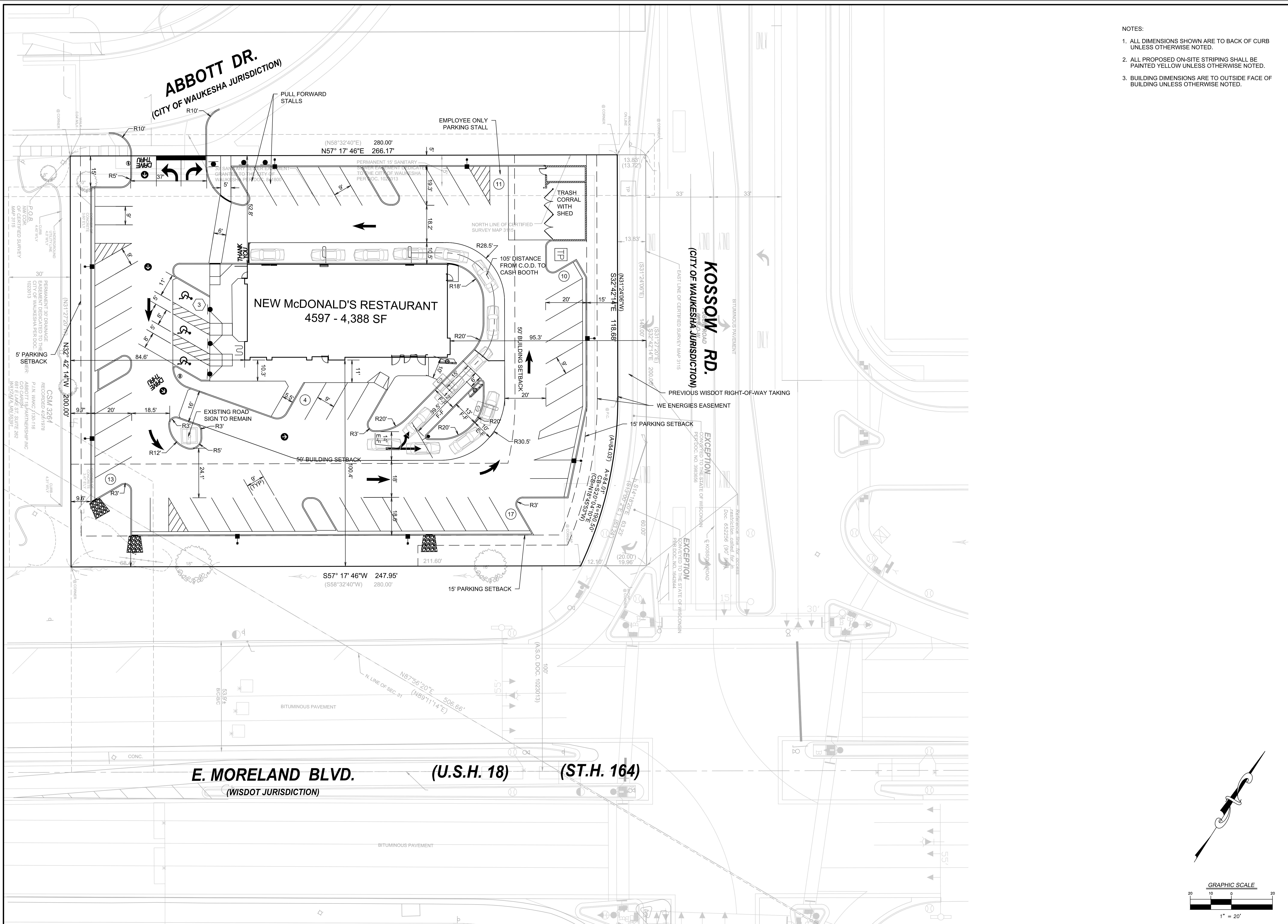
PREPARED BY: V3 Companies
 7325 Janes Avenue
 Woodridge, IL 60517
 630.724.9200 phone
 630.724.9202 fax
 www.v3co.com

PREPARED FOR: **M. McDonald's USA, LLC**
 These drawings and specifications are the confidential and proprietary property of McDonald's USA, LLC and shall not be copied or reproduced in any form without the prior written consent of McDonald's USA, LLC. Use of these drawings for any other project is strictly prohibited. Use of these drawings for any other project is strictly prohibited. Use of these drawings for any other project is strictly prohibited.

DRAWN BY: [REDACTED]
 STD ISSUE DATE: 01-19-17
 REVIEWED BY: JWG
 DATE ISSUED: 01-19-17

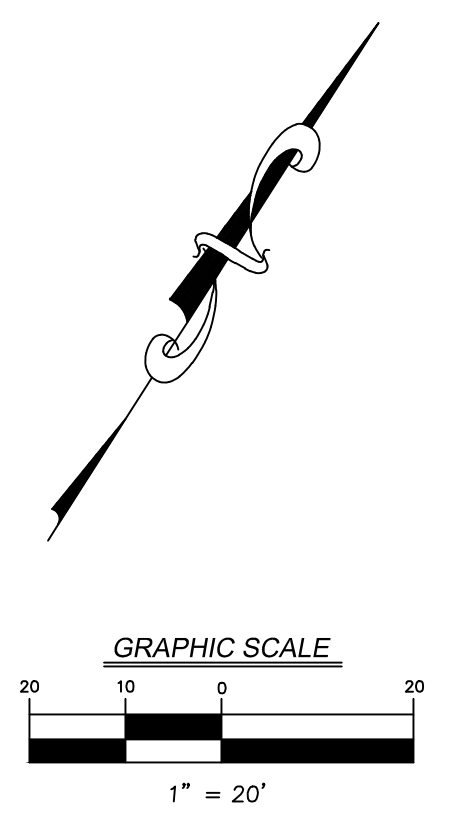
TITLE: **SITE PLAN**
 DESCRIPTION: **MCDONALD'S - WAUKESHA, WI**
 SHEET NO: **C-3.0**
 SITE ADDRESS: **2340 E. MORELAND BLVD., WAUKESHA, WI**

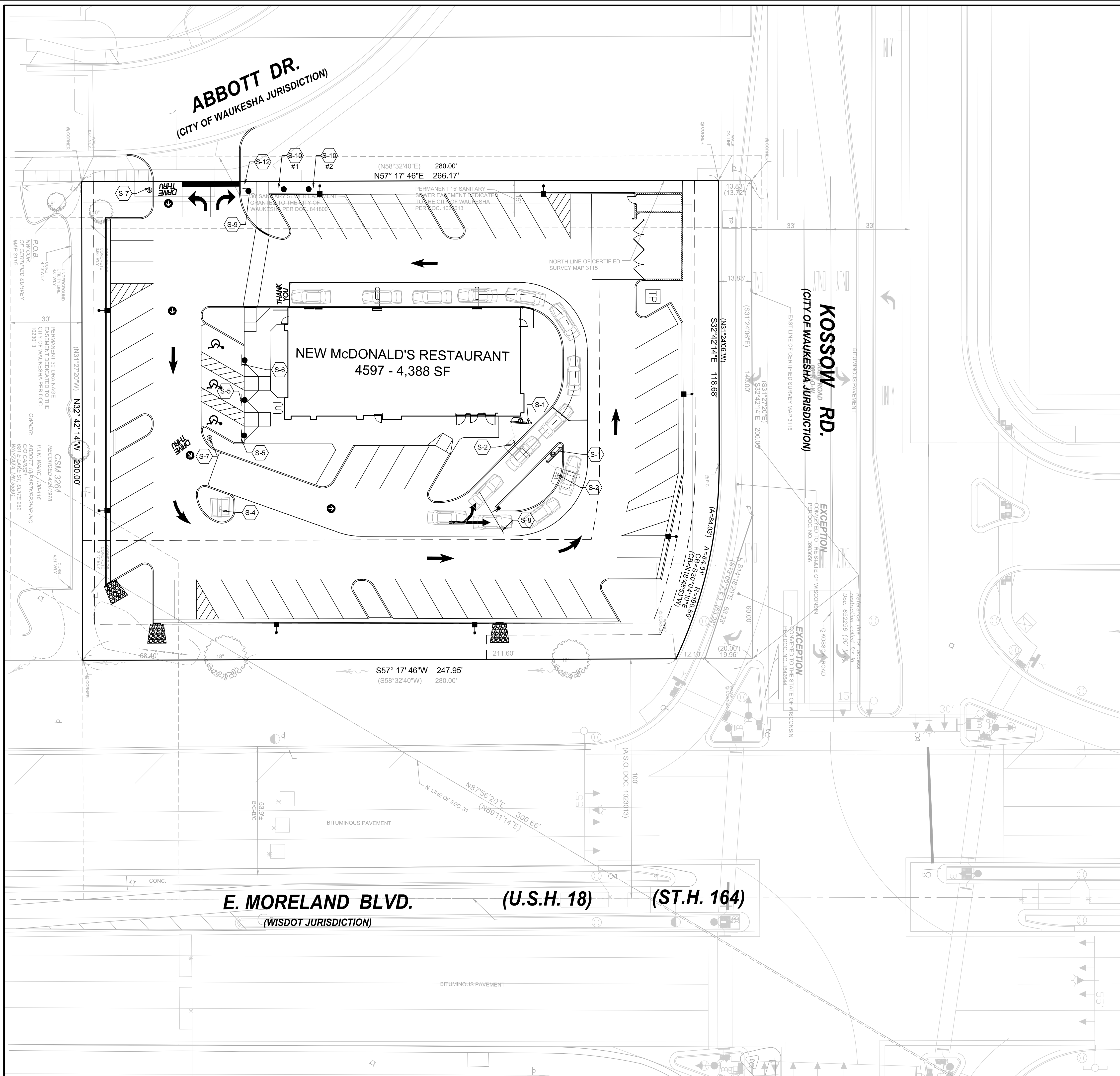
06240-31A - SITE PLAN



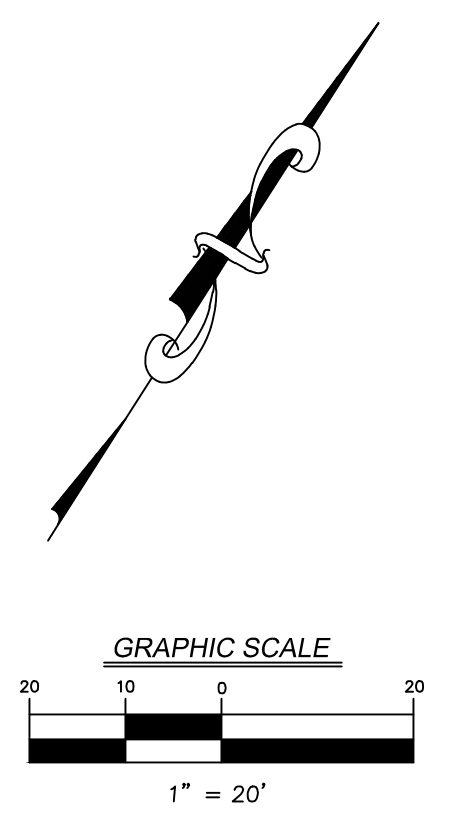
- NOTES:
1. ALL DIMENSIONS SHOWN ARE TO BACK OF CURB UNLESS OTHERWISE NOTED.
 2. ALL PROPOSED ON-SITE STRIPING SHALL BE PAINTED YELLOW UNLESS OTHERWISE NOTED.
 3. BUILDING DIMENSIONS ARE TO OUTSIDE FACE OF BUILDING UNLESS OTHERWISE NOTED.

SHEET NO.	TITLE	DRAWN BY	SITE ADDRESS	DATE ISSUED	BY
C-3.1	LAYOUT PLAN	JWG	2340 E. MORELAND BLVD., WAUKESHA, WI	01-19-17	
DESCRIPTION		MCDONALD'S - WAUKESHA, WI			
LAYOUT PLAN		MCDONALD'S USA, LLC			
<p>PREPARED FOR: M. McDonald's USA, LLC</p> <p>These drawings and specifications are the confidential and proprietary property of McDonald's USA, LLC and shall not be copied or reproduced for use on this specific site in conjunction with its issue date and are not suitable for use on a different site or at a later time. Use of the services of properly licensed architects and engineers. Reproduction of the contract documents for reuse on another project is not authorized.</p>					
<p>PREPARED BY: V3 Companies 7325 Janes Avenue Woodridge, IL 60517 630.724.9200 phone 630.724.9202 fax www.v3co.com</p>					
<p>Visio, Vertere, Virtute... The Vision to Transform with Excellence</p>					

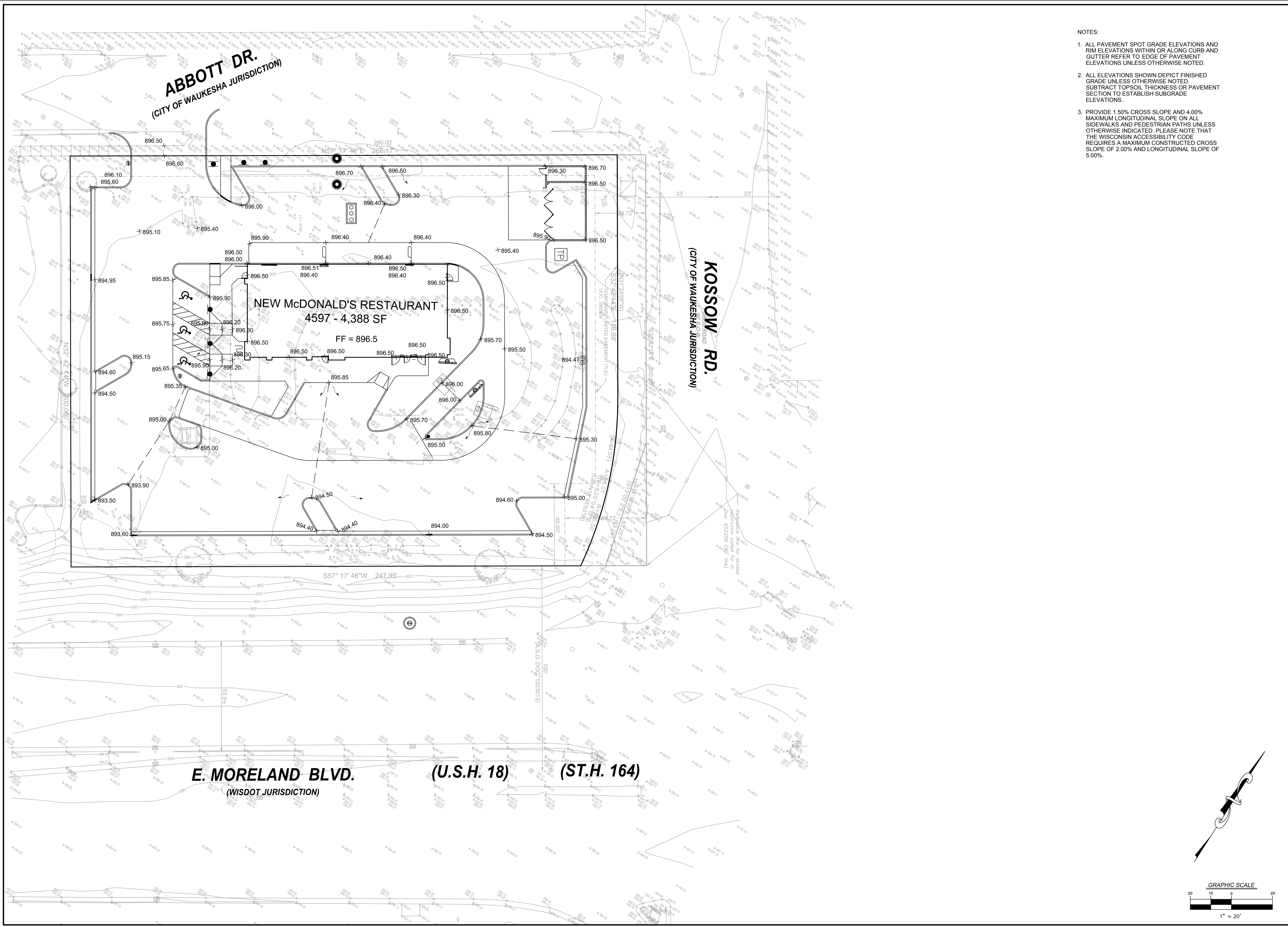




SIGN LEGEND	
	S-1 MENU BOARD
	S-2 COD W/ CANOPY
	S-3 PROPOSED NEXT-GENERATION MONUMENT SIGN
	S-4 EXISTING McDONALD'S ROAD SIGN
	S-5 BOLLARD MOUNTED MUTCD SIGN R7-8 - HANDICAP PARKING
	S-6 BOLLARD MOUNTED MUTCD SIGN R7-8C - ADA VAN ACCESSIBLE PARKING
	S-7 DIRECTIONAL SIGN WITHOUT LOGO
	S-8 DOUBLE GATEWAY WELCOME SIGN
	S-9 STOP SIGN
	S-10 PULL FORWARD SIGN ON MOVABLE PEDESTAL
	S-11 RIGHT TURN ONLY SIGN
	S-12 DO NOT ENTER SIGN



DRAWN BY AREI	STD ISSUE DATE 01-19-17	REVIEWED BY JWVG	DATE ISSUED 01-19-17	TITLE SIGNAGE PLAN	SHEET NO. C-3.2	SHEET ADDRESS 048-0107 2340 E. MORELAND BLVD., WAUKESHA, WI	PREPARED BY M. McDonald's USA, LLC		V3 Companies 7325 Janes Avenue Woodridge, IL 60517 630.724.9200 phone 630.724.9202 fax www.v3co.com	REV	DESCRIPTION	BY

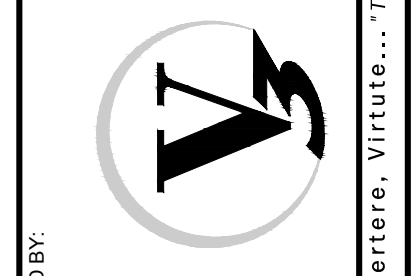


- NOTES:
1. ALL PAVEMENT SPOT GRADE ELEVATIONS AND RIM ELEVATIONS WITHIN OR ALONG CURB AND GUTTER REFER TO EDGE OF PAVEMENT ELEVATIONS UNLESS OTHERWISE NOTED.
 2. ALL ELEVATIONS SHOWN DEPICT FINISHED GRADE UNLESS OTHERWISE NOTED. SUBTRACT TOPSOIL THICKNESS OR PAVEMENT SECTION TO ESTABLISH SUBGRADE ELEVATIONS.
 3. PROVIDE 1.50% CROSS SLOPE AND 4.00% MAXIMUM LONGITUDINAL SLOPE ON ALL SIDEWALKS AND PEDESTRIAN PATHS UNLESS OTHERWISE INDICATED. PLEASE NOTE THAT THE WISCONSIN ACCESSIBILITY CODE REQUIRES A MAXIMUM CONSTRUCTED CROSS SLOPE OF 2.00% AND LONGITUDINAL SLOPE OF 5.00%.

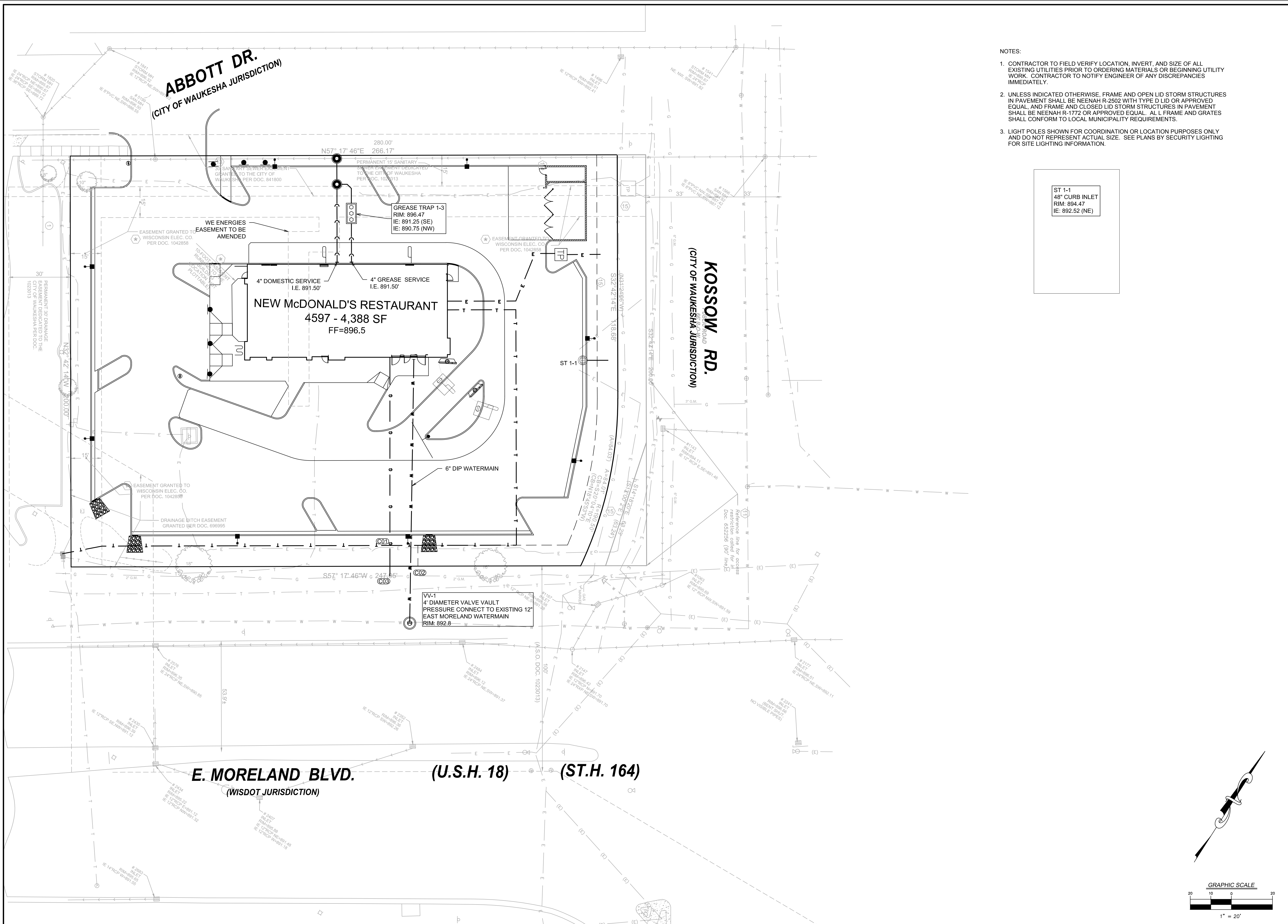
SHEET NO.	TITLE	DRAWN BY	STD ISSUE DATE	REVIEWED BY	DATE ISSUED	SITE ADDRESS	DESCRIPTION	REV	DATE	DESCRIPTION	BY
048-0107	GRADING PLAN	AREI	01-19-17	JWVG	01-19-17	2340 E. MORELAND BLVD., WAUKESHA, WI	MCDONALD'S - WAUKESHA, WI				
C-4.0	GRADING PLAN										

PREPARED FOR:
M. McDonald's USA, LLC
 These drawings and specifications are the confidential and proprietary property of McDonald's USA, LLC and shall not be copied or reproduced for use on this specific site in conjunction with its issue date and are not suitable for use on a different site or at a later time. Use of these drawings and specifications without the express written consent of the services of properly licensed architects and engineers. Reproduction of the contract documents for reuse on another project is not authorized.

PREPARED BY:
V3 Companies
 7325 Janes Avenue
 Woodridge, IL 60517
 630.724.9200 phone
 630.724.9202 fax
 www.v3co.com

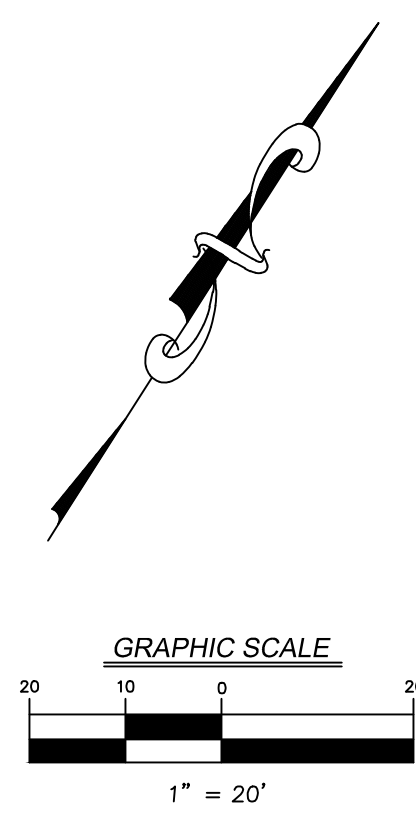


--	--	--	--	--	--	--	--	--	--	--	--



- NOTES:
- CONTRACTOR TO FIELD VERIFY LOCATION, INVERT, AND SIZE OF ALL EXISTING UTILITIES PRIOR TO ORDERING MATERIALS OR BEGINNING UTILITY WORK. CONTRACTOR TO NOTIFY ENGINEER OF ANY DISCREPANCIES IMMEDIATELY.
 - UNLESS INDICATED OTHERWISE, FRAME AND OPEN LID STORM STRUCTURES IN PAVEMENT SHALL BE NEENAH R-2502 WITH TYPE D LID OR APPROVED EQUAL, AND FRAME AND CLOSED LID STORM STRUCTURES IN PAVEMENT SHALL BE NEENAH R-1772 OR APPROVED EQUAL. ALL L FRAME AND GRATES SHALL CONFORM TO LOCAL MUNICIPALITY REQUIREMENTS.
 - LIGHT POLES SHOWN FOR COORDINATION OR LOCATION PURPOSES ONLY AND DO NOT REPRESENT ACTUAL SIZE. SEE PLANS BY SECURITY LIGHTING FOR SITE LIGHTING INFORMATION.

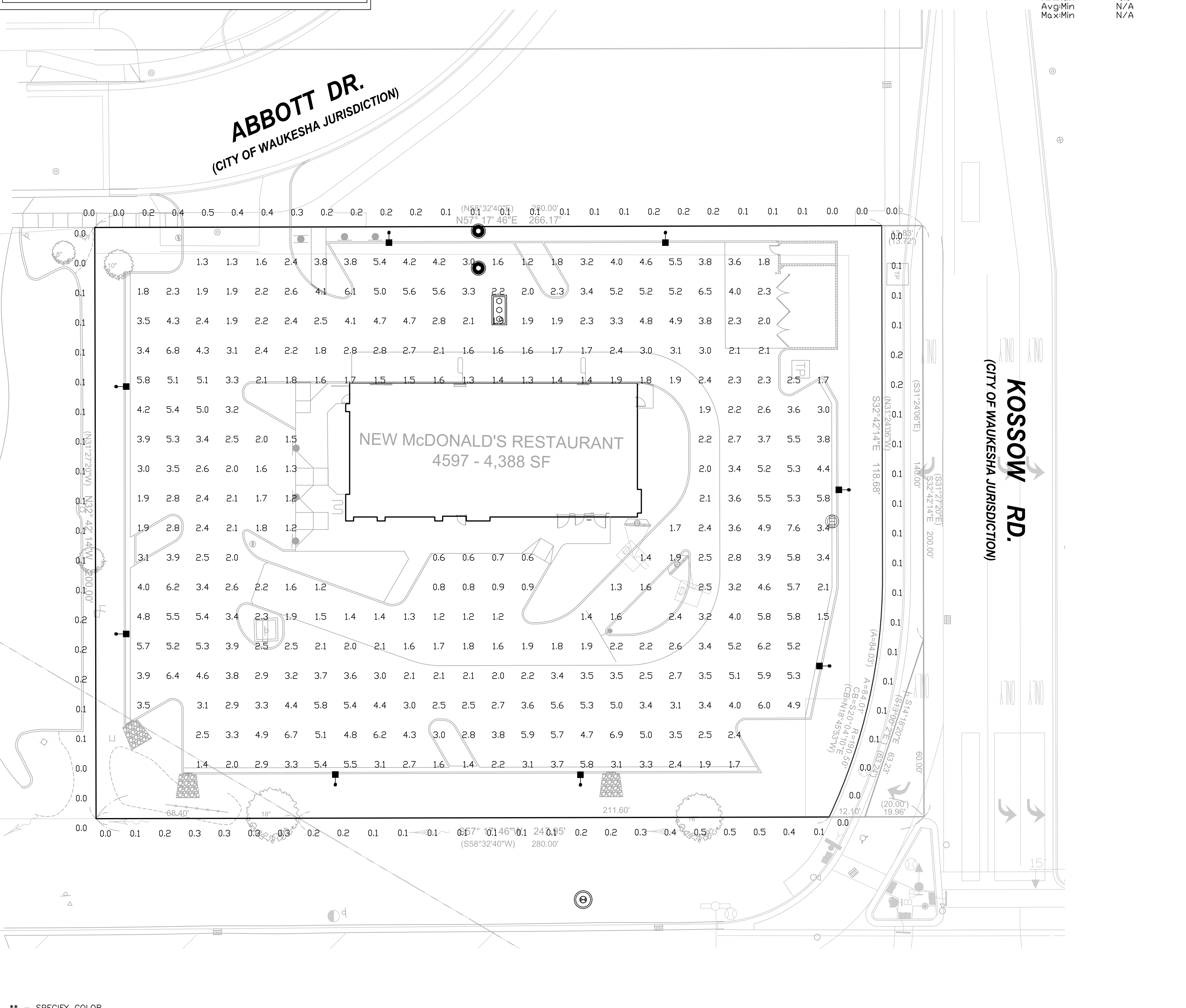
ST 1-1
48" CURB INLET
RIM: 894.47
IE: 892.52 (NE)



SHEET NO.	UTILITY PLAN		DATE	REV	DESCRIPTION	BY
	C-5.0					
TITLE	UTILITY PLAN					
DESCRIPTION	MCDONALD'S - WAUKESHA, WI					
SITE ID	048-0107	SITE ADDRESS	2340 E. MORELAND BLVD., WAUKESHA, WI			
DRAWN BY	JREI	STD ISSUE DATE	01/19/17			
REVIEWED BY	JWVG	DATE ISSUED	01/19/17			
<p>PREPARED FOR: M. McDonald's USA, LLC</p> <p>These drawings and specifications are the confidential and proprietary property of McDonald's USA, LLC and shall not be copied or reproduced for use on this specific site in conjunction with its issue date and are not suitable for use on a different site or at a later time. Use of the services of properly licensed architects and engineers. Reproduction of the contract documents for reuse on another project is not authorized.</p>						
<p>PREPARED BY: V3 Companies 7325 Janes Avenue Woodridge, IL 60517 630.724.9200 phone 630.724.9202 fax www.v3co.com</p>						
<p>Visio, Vertere, Virtute... The Vision to Transform with Excellence</p>						

NOTES:

1. THE FOOTCANDLE LEVELS AS SHOWN ARE BASED ON THE FOLLOWING CRITERIA. ANY SUBSTITUTIONS IN SPECIFIED FIXTURES OR CHANGES TO LAYOUT WILL AFFECT LIGHTING LEVELS SHOWN AND WILL NOT BE THE RESPONSIBILITY OF SECURITY LIGHTING.
2. THE CONTRIBUTION OF THE SDDFIT / BUILDING LIGHTING IS NOT REFLECTED ON THE DRAWING UNLESS SDDFIT / BUILDING LIGHTING IS SPECIFIED IN THE FIXTURE SCHEDULE BELOW.
3. DISTANCE BETWEEN READINGS 10'
4. FINAL ADJUSTMENTS TO AIMING ANGLE/DIRECTION OF FIXTURES MAY BE REQUIRED TO ELIMINATE LIGHT TRESPASS OR GLARE ONTO ADJOINING PROPERTIES OR ROADWAYS.



PAVED SURFACE READINGS

Average	3.1
Maximum	7.6
Minimum	0.6
Avg/Min	5.22
Max/Min	12.67

PROPERTY LINE READINGS

Average	0.1
Maximum	0.5
Minimum	0.0
Avg/Min	N/A
Max/Min	N/A

VP-L Viper (Large)

FEATURES

- The Beacon Viper luminaire is available in two sizes with a wide choice of different LED wattage configurations and optical distributions designed to replace HID lighting up to 1000W MH or HPS and with 5 different mounting options for application in a wide variety of new and existing installations. Luminaires are suitable for wet locations.
- Each Viper luminaire is supplied with an one piece optical cartridge system consisting of an LED engine, LED lamps, optics, gasket and stainless steel bezel.
- A thermal circuit, LIFESHIELD™, shall protect the luminaire from excessive temperature by interfacing with the 0-10V dimmable drivers to reduce drive current as necessary.
- Aluminum thermal clad board with 0.062" thick aluminum base layer, thermally conductive dielectric layer, 0.0014" thick copper circuit layer circuit layer designed with copper pours to minimize thermal impedance across dielectric.

ORDERING INFORMATION

MODEL	CCT-COLOR TEMP	VOLTAGE	MOUNTING OPTIONS	COLOR
VP-L Viper (Large)	5K 5000°K (std.) 4K 4000°K 3K 3000°K	UNV 120-277V 347 347V 480 480V	RA Rectangular Arm SF2 2 1/2" OD Slipfitter PK2 2 1/2" Adjustable Knuckle WB Wall Bracket	B8T Basic Black Textured BMT Black Matte Textured WWT White Textured MBT Metallic Bronze Textured BZT Bronze Textured GYS Gray Smooth DPS Dark Platinum Smooth GAT Green Textured MST Metallic Silver Textured MTT Metallic Titanium Textured OWI Old World Iron RAL

DETAILS

SQUARE STRAIGHT STEEL POLES

Specifications

SSP SERIES

- Square straight steel shaft
- One-piece construction
- 2 3/8" OD tenons, or factory-drilled side mount
- Ground lug standard (3/8" 16 thread)
- Steel base plate
- Two-piece base cover
- Four L-shaped fully galvanized anchor bolts with nuts and washers, metal template
- Finished in weatherproof powder-coat paint
- Gasketed hand hole standard

ORDERING INFORMATION

Pole Catalog Number	Height	Strength (EPA)	Wind Load Rating (EPA)	100mph (EPA)	120mph (EPA)	Pole Size	Base Cover	Anchor Bolt Size	Suggested Bolt Circle	Bolt Circle	Bolt	Pole Weight (lbs)
SSP-4118-XXX-XX	18	13.8	10.6	8.2	6.3	4"	10.25"	3/4"	10.5"	8-11"	4"	147
SSP-4125-XXX-XX	25	6.4	4.3	2.7	1.4	4"	10.25"	3/4"	10.5"	8-11"	4"	190
SSP-5125-XXX-XX	25	8.8	5.9	3.6	1.9	5"	12"	1"	10.5"	10-13.5"	4"	231
SSP-4725-XXX-XX	25	10.9	8.1	6.0	4.4	4"	11"	3/4"	10.5"	8-11"	4"	266
SSP-5725-XXX-XX	22	22.4	17.3	13.5	10.5	5"	12"	1"	10.5"	10-13.5"	4"	263
SSP-5730-XXX-XX	28	13.7	9.9	7.1	4.9	5"	12"	1"	10.5"	10-13.5"	4"	340
SSP-5730-XXX-XX	30	11.5	8.0	5.4	3.4	5"	12"	1"	10.5"	10-13.5"	4"	398

CATALOG LOGIC

SSP XX XX X X XX XX

Series Shaft Size Nominal Height Top Type Mounting Arrangement Pole Type Option Finish

FINISHES

SSP	Square Straight Steel
-----	-----------------------

SHAFT SIZE SQUARE / GAUGE

41	4.0, 11 ga.
47	4.0, 7 ga.
51	5.0, 11 ga.
57	5.0, 7 ga.

NOMINAL POLE HEIGHT (in feet)

See ordering information above!

FINISH

DB	Dark Bronze
BK	Black
WH	White
PS	Platinum Silver
OD	Natural Galvanized Finish

TOP TYPE

1	2 3/8" OD Tenon*
5	Removable Tenon*
6	Side mount

MOUNTING ARRANGEMENT

A	One Fixture
B	Two Fixtures at 90°
C	Two Fixtures at 180°
D	Three Fixtures at 90°
F	Four Fixtures at 90°
P	Tenon only

FINISH TYPE

0	None, tenon only
2	ASDF, RSD-RCS-RLC, WL-MKC, SL-CR1, CM, CM2

OPTION

BLANK	Standard
GL	Hot Dip Galvanized

ACCESSORY: TENON TOP MOUNTING BRACKET

Bracket	Mounting
TTF-10	Single
TTF-20	Twin 90°
TTF-30	Twin 180°
TTF-39	Tripe 90°
TTF-30	Tripe 120°
TTF-49	Quad 90°

FIXTURE TYPE:	SYMBOL	FIXTURE QUANTITY	CONFIG	QUANTITY	TENON TOP FITTERS	QUANTITY	EPA	MOUNTING HEIGHT	LLF	POLE TYPE:	QUANTITY	WIND Load	ALLOWED EPA
VP-L-96NB-280-4K-T4-UNV-RA--BLC	□	8	SGL	8	TTFVIPER	8	1.00	21'	0.87	SSP-4118-GL--TT (4")	8	90mph	7.2

* PROJECT WIND LOAD CRITERIA BASED ON: ASCE 7-10 WIND SPEEDS (3-SEC PEAK GUST MPH) 50 YEAR MEAN RECURRENCE INTERVAL

THIS DRAWING MEETS OR EXCEEDS MINIMUM CURRENT ILLUMINATION SPECIFICATIONS OF A 3-4 FOOTCANDLE AVERAGE, UNLESS SUPERSEDED BY OTHER REQUIREMENTS.

THIS LAYOUT MAY NOT MEET TITLE 24 OR LOCAL ENERGY REQUIREMENTS. IF THIS LAYOUT NEEDS TO BE TITLE 24 COMPLIANT OR MEET OTHER ENERGY REQUIREMENTS, PLEASE CONSULT FACTORY WITH SPECIFIC DETAILS REGARDING PROJECT REQUIREMENTS SO THAT REVISIONS MAY BE MADE TO THE DRAWING.

THIS LIGHTING PATTERN REPRESENTS ILLUMINATION LEVELS CALCULATED FROM LABORATORY DATA TAKEN UNDER CONTROLLED CONDITIONS IN ACCORDANCE WITH ILLUMINATING ENGINEERING SOCIETY APPROVED METHODS. ACTUAL PERFORMANCE OF ANY MANUFACTURER'S LUMINAIRES MAY VARY DUE TO VARIATION IN ELECTRICAL VOLTAGE, TOLERANCE IN LAMPS, AND OTHER VARIABLE FIELD CONDITIONS.

SECURITY LIGHTING SYSTEMS

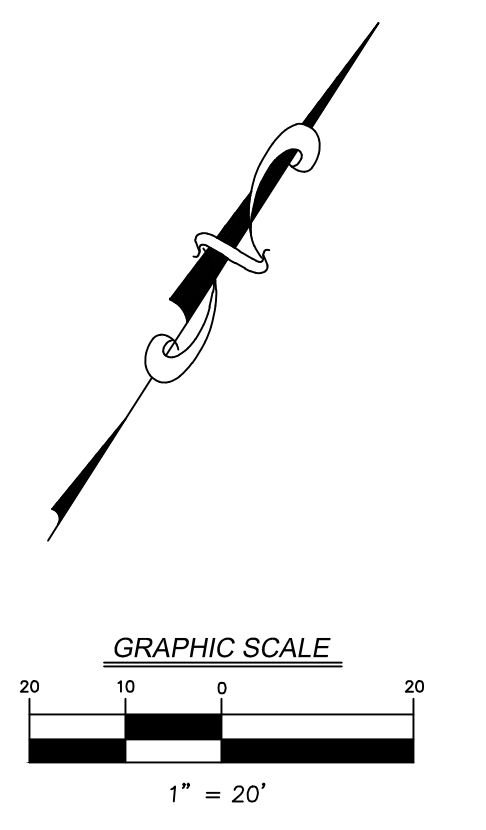
A HUBBELL LIGHTING, INC. COMPANY

Performance Designed Lighting Products

1085 Johnson Drive • Buffalo Grove, IL 60089 • TOLL-FREE: 800-544-4848 • PHONE: 847-279-0627 • FAX: 847-279-0642

www.securitylighting.com

Rev 1/12



PREPARED FOR: **McDonald's USA, LLC**

DRAWN BY: **PHOTOMETRIC PLAN**

DATE: 01-19-17

REVIEWED BY: **JWG**

DATE ISSUED: 01-19-17

SHEET NO: **C-8.0**

TITLE: **PHOTOMETRIC PLAN**

DESCRIPTION: **McDONALD'S - WAUKESHA, WI**

SITE ADDRESS: **048-0107 2340 E. MORELAND BLVD., WAUKESHA, WI**

DATE: 01-19-17

BY: **VP**

DESCRIPTION: **PHOTOMETRIC PLAN**

REV: **VP**

REVISIONS: