

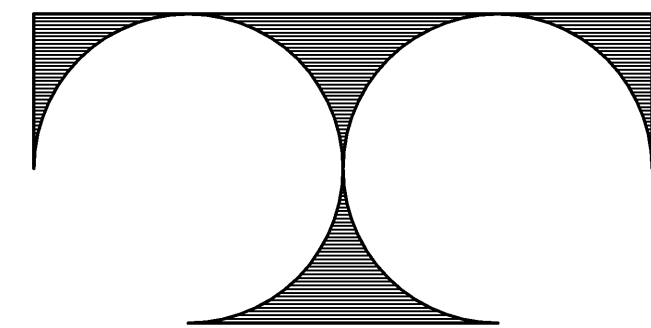
PROJECT:

MARINE BANK /
4 P'S IN A POD
1930-D BLUEMOUND ROAD
WAUKESHA, WISCONSIN

GENERAL CONTRACTOR

VENTURE DEVELOPMENT
1930-D BLUEMOUND ROAD
WAUKESHA, WISCONSIN
PHONE (262) 439-8866
FAX (262) 439-8867

ARCHITECT:



TDI ASSOCIATES, INC.
ARCHITECTS, ENGINEERS, PLANNERS
N8 W22350 JOHNSON DRIVE SUITE B4
WAUKESHA, WI 53186
PHONE (262) 437-0400
FAX (262) 437-0401

GENERAL NOTES:

1. THE ARCHITECT/ENGINEER MAINTAINS NO RESPONSIBILITY FOR THE GENERAL CONTRACTOR, SUBCONTRACTORS, OR THOSE WORKING IN SUCH CAPACITIES, FOR THE METHODS USED, OR LACK THEREOF, IN THE EXECUTION OF THE WORK AND SAFETY PROCEDURES AND PRECAUTIONS TAKEN AT THE PROJECT SITE.
2. CONTRACTORS SHALL ASSUME FULL RESPONSIBILITY - UNRELIEVED BY REVIEW OF SHOP DRAWINGS NOR BY SUPERVISION OR PERIODIC OBSERVATION OF CONSTRUCTION FOR COMPLIANCE WITH THE CONTRACT DOCUMENTS - FOR DIMENSIONS TO BE CONFIRMED AND CORRELATED ON THE JOB SITE AND BETWEEN INDIVIDUAL DRAWINGS OR SETS OF DRAWINGS FOR FABRICATION PROCESSES AND CONSTRUCTION TECHNIQUES (INCLUDING EXCAVATION, SHORING AND SCAFFOLDING, BRACING, ERECTION, FORMWORK, ETC.), FOR COORDINATION OF THE VARIOUS TRADES, FOR SAFE CONDITIONS ON THE JOB SITE, AND FOR THE PROTECTION OF THE PEOPLE AND PROPERTY AT THE JOB SITE.
3. VARIATIONS IN FIELD CONDITIONS RELATIVE TO THE CONTRACT DOCUMENTS SHALL BE REPORTED TO THE ARCHITECT/ENGINEER WORK SHALL NOT PROGRESS UNTIL WRITTEN PERMISSION FROM THE ARCHITECT/ENGINEER IS OBTAINED.
4. THE INFORMATION CONTAINED ON THE DRAWINGS IS IN ITSELF INCOMPLETE, AND VOID UNLESS USED IN CONJUNCTION WITH ALL THE SPECIFICATIONS, TRADE PRACTICES, OR APPLICABLE STANDARDS, CODES, ETC., INCORPORATED THEREIN BY REFERENCE, OF WHICH THE CONTRACTOR CERTIFIES KNOWLEDGE BY SIGNING THE CONTRACT.
5. ARCHITECT/ENGINEER'S REVIEW OF DRAWINGS PREPARED BY THE CONTRACTORS, SUPPLIERS, ETC. ARE ONLY FOR CONFORMANCE WITH THE DESIGN CONCEPT. CONSTRUCTION SHALL NOT START WITHOUT SAID REVIEW AND ONLY SHOP DRAWINGS STAMPED BY THE ARCHITECT/ENGINEER WILL BE ALLOWED AT THE JOB SITE.
6. DRAWINGS ARE NOT TO BE USED FOR SHOP DETAILING OR FOR CONSTRUCTION UNLESS SPECIFICALLY STAMPED BY THE ARCHITECT/ENGINEER ON THE DRAWINGS "FOR CONSTRUCTION". THESE DRAWINGS ARE TO BE REPRODUCED FOR THE PURPOSE OF USING THEM AS SHOP DRAWINGS.
7. UNLESS NOTED OTHERWISE, ALL DETAILS, SECTIONS, AND NOTES ON THE DRAWINGS ARE INTENDED TO BE TYPICAL FOR SIMILAR SITUATIONS ELSEWHERE.
8. ALL DIMENSIONS ON STRUCTURAL DRAWINGS ARE TO BE CHECKED BY THE CONTRACTOR AGAINST ARCHITECTURAL, MECHANICAL, AND ELECTRICAL DRAWINGS. CONTRACTOR SHALL BE FULLY RESPONSIBLE FOR CONFIRMING AND CORRELATING ALL DIMENSIONS ON THE JOB SITE AND BETWEEN INDIVIDUAL DRAWINGS AND TRADES.
9. SEE ARCHITECTURAL, MECHANICAL AND ELECTRICAL DRAWINGS FOR ADDITIONAL OPENINGS, SLEEVES, EQUIPMENT PADS, DEPRESSIONS, CURBS, FLOOR FINISHES, INSERTS, AND OTHER EMBEDDED ITEMS.
10. UNLESS OTHERWISE SHOWN OR NOTED, THE GENERAL CONTRACTOR SHALL BE RESPONSIBLE FOR COORDINATING THE LOCATION AND THE PLACEMENT OF ANY INSERTS, HANGARS, PIPE SLEEVES, HOLES OR ANKERS BOLTS THAT ARE REQUIRED BY THE MECHANICAL OR ELECTRICAL EQUIPMENT.
11. THE CONTRACTOR SHALL COMPLY WITH THE LATEST OCCUPATIONAL SAFETY HEALTH ACT REQUIREMENTS.
12. ALL CONSTRUCTION SHALL BE PERFORMED IN STRICT CONFORMANCE WITH ALL APPLICABLE STATE AND LOCAL BUILDING CODES.

CODE INFORMATION :

COMMERCIAL BUILDING - ONE STORY
NON-SEPARATED USES PER IBC 508.3.2
FULLY SPRINKLED (NFPA-13)

USE and OCCUPANCY
GROUP B (BUSINESS) "BUSINESS"

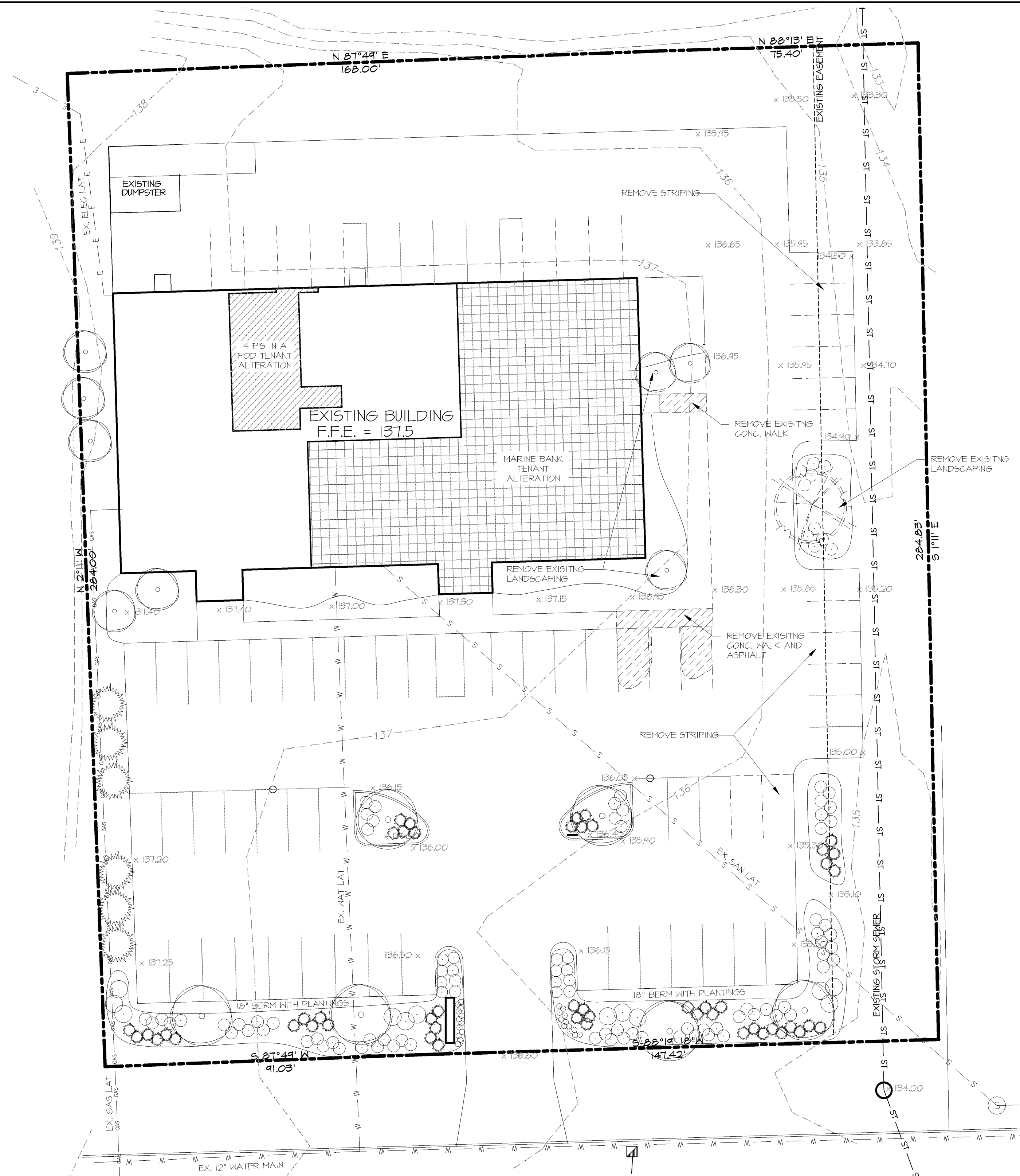
ALLOWABLE HEIGHT and AREA
GROUP B 4 STORIES / 23,000 SF
SPRINKLER INCREASE: 69,000 SF

TOTAL ALLOWABLE AREA: 42,000 SF
TOTAL ACTUAL BUILDING AREA: 12,247 SF
MARINE BANK TENANT ALTERATION AREA: 5,241 SF
4 P'S IN A POD TENANT ALTERATION AREA: 2,711 SF
TOTAL TENANT ALTERATIONS: 8,624 SF

TYPE OF CONSTRUCTION
TYPE 2-B NON-COMBUSTIBLE

STRUCTURAL FRAMING	NC, 0 HOUR
BEARING WALLS (EXT.)	NC, 0 HOUR
BEARING WALLS (INT.)	NC, 0 HOUR
NON-BEARING WALLS (EXT.)	NC, 0 HOUR (0.30 H.)
NON-BEARING WALLS (INT.)	NC, 0 HOUR
FLOOR CONSTRUCTION	NC, 0 HOUR
ROOF CONSTRUCTION	NC, 0 HOUR

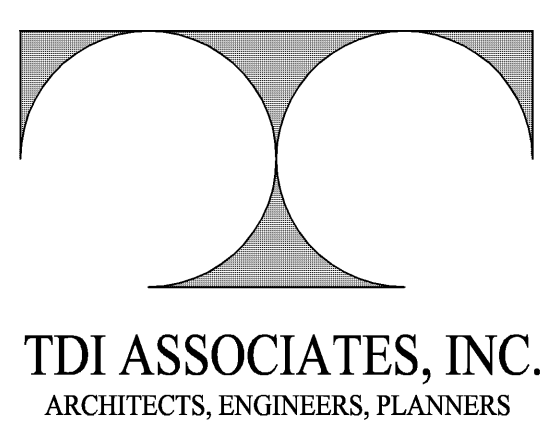
NC. = NON COMBUSTIBLE



EXISTING/DEMO PLAN
SCALE: 1" = 20'-0"

DRAWING INDEX :

- ARCHITECTURAL:
- T 1.0 TITLE SHEET
 - C 1.0 SITE DEVELOPMENT PLANS
 - A 1.0 DEMO FLOOR PLAN
 - A 1.1 FLOOR PLAN
 - A 2.1 EXTERIOR ELEVATIONS & SECTIONS
 - A 4.1 REFLECTED CEILING PLAN
 - A 7.1 DOOR & ROOM FINISH SCHEDULES & DOOR TYPES



TDI ASSOCIATES, INC.
ARCHITECTS, ENGINEERS, PLANNERS
N8 W22350 JOHNSON DRIVE, SUITE B4
WAUKESHA, WISCONSIN 53186
PHONE 262-437-0400 FAX 262-437-0401



MARINE BANK / 4 P'S IN A POD
1930-D WEST BLUEMOUND ROAD
WAUKESHA, WISCONSIN

© TDI ASSOCIATES, INC
All Rights Reserved
OWNERSHIP OF DOCUMENTS
This document, and the ideas and design incorporated herein, as an instrument of professional service, is the sole property of TDI Associates, Inc., and is not to be used in whole or in part for any other project or purpose without the expressed written authorization of TDI Associates, Inc.

Sheet Title
TITLE SHEET

Issued For: Date:
PERMIT SET 04-01-2010
CONST. SET 04-27-2010

Date: P.C. REVISIONS **08-25-2010**

Job No.: **02-457.003**

Drawn By: **RJH**

Sheet No.
T-1.0