

Waukesha  
City Hall  
Waukesha, WI

**B W B R**

1241 John Q Hammons Dr., Ste. 503  
Madison, WI 53717  
608.829.3701  
bwbr.com

Consultants  
**raSmith** 16745 W. Bluemound Road  
Brookfield, WI 53005-9938  
CREATIVITY BEYOND ENGINEERING (262) 781-1000  
rasmith.com

This document may be an electronic file or may be printed from an electronic file provided to the user. It is the sole responsibility of the user to ensure that the content and quality is consistent with the content and quality of the original documents on file at BWBR.

I hereby certify that this plan, specification or report was prepared by me or under my direct supervision and that I am a duly Licensed Registered Architect under the laws of the State of Wisconsin.

Name \_\_\_\_\_  
Date \_\_\_\_\_ Lic./Reg. No. \_\_\_\_\_

Issued For \_\_\_\_\_

Item \_\_\_\_\_ Date \_\_\_\_\_

\_\_\_\_\_

\_\_\_\_\_

\_\_\_\_\_

\_\_\_\_\_

\_\_\_\_\_

\_\_\_\_\_

\_\_\_\_\_

\_\_\_\_\_

\_\_\_\_\_

\_\_\_\_\_

\_\_\_\_\_

\_\_\_\_\_

\_\_\_\_\_

\_\_\_\_\_

\_\_\_\_\_

\_\_\_\_\_

\_\_\_\_\_

\_\_\_\_\_

\_\_\_\_\_

\_\_\_\_\_

\_\_\_\_\_

\_\_\_\_\_

\_\_\_\_\_

\_\_\_\_\_

\_\_\_\_\_

\_\_\_\_\_

\_\_\_\_\_

\_\_\_\_\_

\_\_\_\_\_

\_\_\_\_\_

\_\_\_\_\_

\_\_\_\_\_

\_\_\_\_\_

\_\_\_\_\_

\_\_\_\_\_

\_\_\_\_\_

\_\_\_\_\_

\_\_\_\_\_

\_\_\_\_\_

\_\_\_\_\_

\_\_\_\_\_

\_\_\_\_\_

\_\_\_\_\_

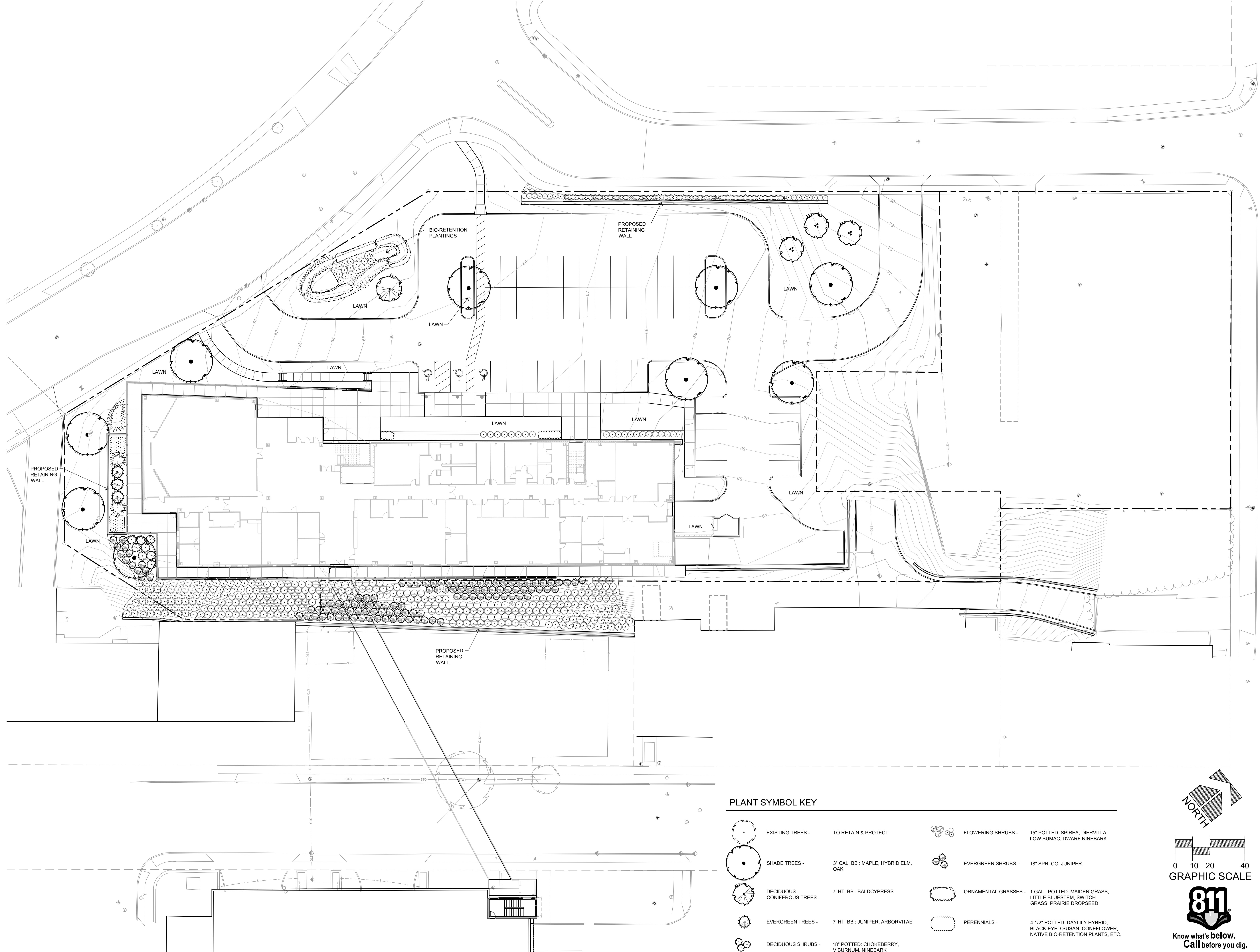
\_\_\_\_\_

\_\_\_\_\_

\_\_\_\_\_

\_\_\_\_\_

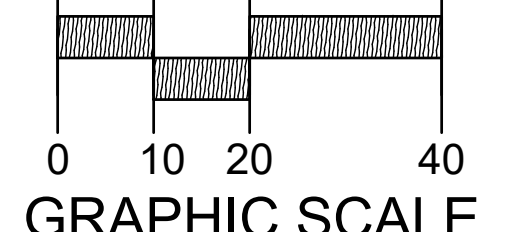
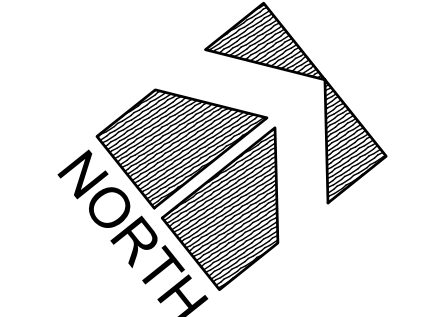
\_\_\_\_\_



**PLANT SYMBOL KEY**

	EXISTING TREES - TO RETAIN & PROTECT		FLOWERING SHRUBS - 15" POTTED: SPIREA, DIERVILLA, LOW SUMAC, DWARF NINEBARK
	SHADE TREES - 3" CAL. BB : MAPLE, HYBRID ELM, OAK		EVERGREEN SHRUBS - 18" SPR. CG: JUNIPER
	DECIDUOUS CONIFEROUS TREES - 7 HT. BB : BALDCYPRESS		ORNAMENTAL GRASSES - 1 GAL. POTTED: MAIDEN GRASS, LITTLE BLUESTEM, SWITCH GRASS, PRAIRIE DROPSEED
	EVERGREEN TREES - 7 HT. BB : JUNIPER, ARBORVITAE		PERENNIALS - 4 1/2" POTTED: DAYLILY HYBRID, BLACK-EYED SUSAN, CONEFLOWER, NATIVE BIO-RETENTION PLANTS, ETC.
	DECIDUOUS SHRUBS - 18" POTTED: CHOKEBERRY, VIBURNUM, NINEBARK		

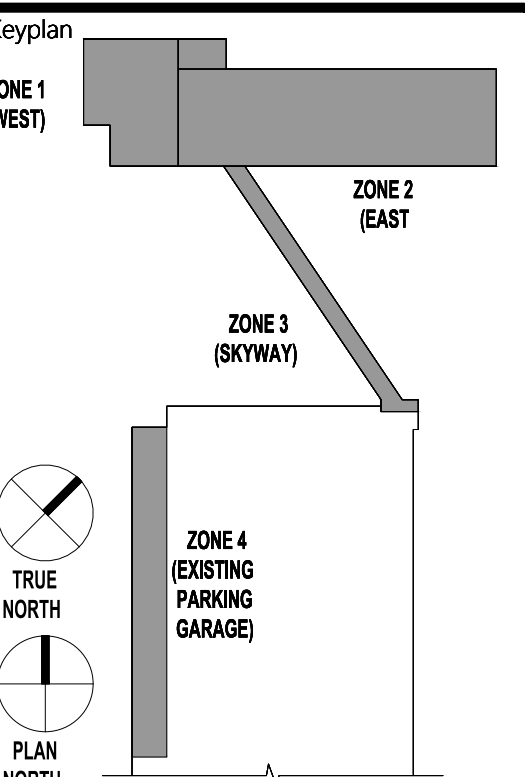
TURF SEED - DURABLE, PREMIUM COMMERCIAL BLEND (TO BE SPECIFIED)  
NOTE: ALL DETAILS AND SPECIFICATIONS TO BE DETERMINED ON FINAL LANDSCAPE PLANS.



R.A. SMITH, INC. ASSUMES NO RESPONSIBILITY FOR DAMAGES, LIABILITY OR COSTS RESULTING FROM CHANGES OR ALTERATIONS MADE TO THIS PLAN WITHOUT THE EXPRESSED WRITTEN CONSENT OF R.A. SMITH, INC.

**NOT FOR CONSTRUCTION FOR REFERENCE ONLY**

This Sheet may be a Reduced Copy. The bar above is 1" long on a Full Size Sheet. Drawing Scales apply to Full Size Sheets.



raSmith Project No. 3170507 Project Manager TOM MORTENSEN

Sheet Title **LANDSCAPE PLAN**

Sheet No. \_\_\_\_\_

**C240.LP**

P:\3170507\Drawings\Sheets\3170507-LSP01.dwg, Landscape Plan, 2/14/2019 11:54:31 AM, rmm

Copyright BWBR