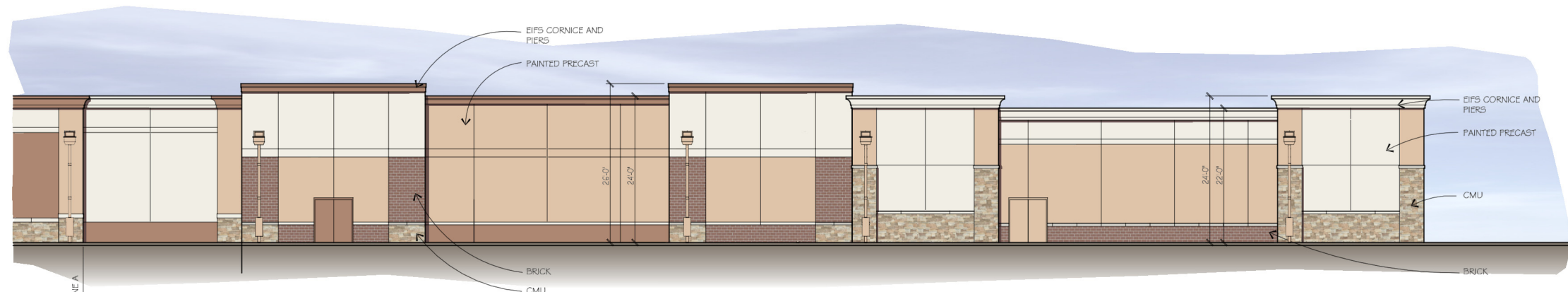
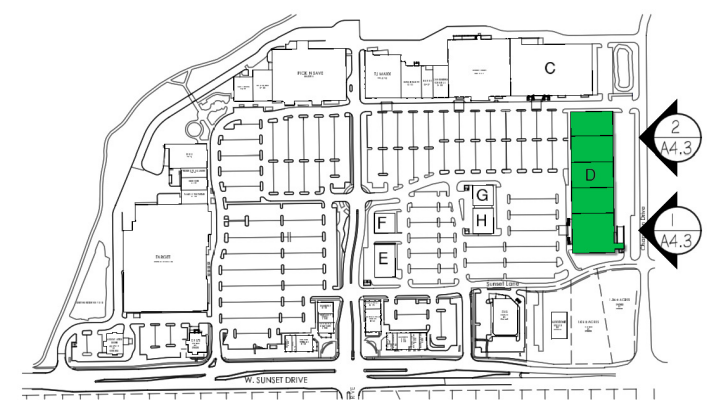




PARTIAL EAST ELEVATION 1
 SCALE: 3/32"=1'-0"
 A4.3



PARTIAL EAST ELEVATION 2
 SCALE: 3/32"=1'-0"
 A4.3



KEY PLAN
 SCALE: NTS

BUILDING D ELEVATIONS :
SHOPPES AT FOX RIVER
 WAUKESHA, WISCONSIN

OWNER/DEVELOPER
 RAMCO-GERSHENSON INC.
 31500 NORTHWESTERN HWY, SUITE 300
 FARMINGTON HILLS, MICHIGAN 48334

ISSUED :
 OWNER REVIEW
 3-4-14
 OWNER REVIEW
 3-6-14



WAH YEE ASSOCIATES
 ARCHITECTS & PLANNERS
 37911 WEST TWELVE MILE ROAD
 FARMINGTON HILLS, MICHIGAN 48331
 PHONE 248.489.9160 FAX 489.0133
 PROJECT NO. 4761

All ideas, designs, arrangements, and plans indicated or represented by the drawing are owned by and the property of Wah Yee Associates and were created, evolved and developed for use on and in connection with the specified project. None of such ideas, arrangements, or plans shall be used by or disclosed to any person, firm or corporation for any purpose whatsoever without the written permission of Wah Yee Associates.

PRELIMINARY
 NOT FOR
 CONSTRUCTION
 A 4.3