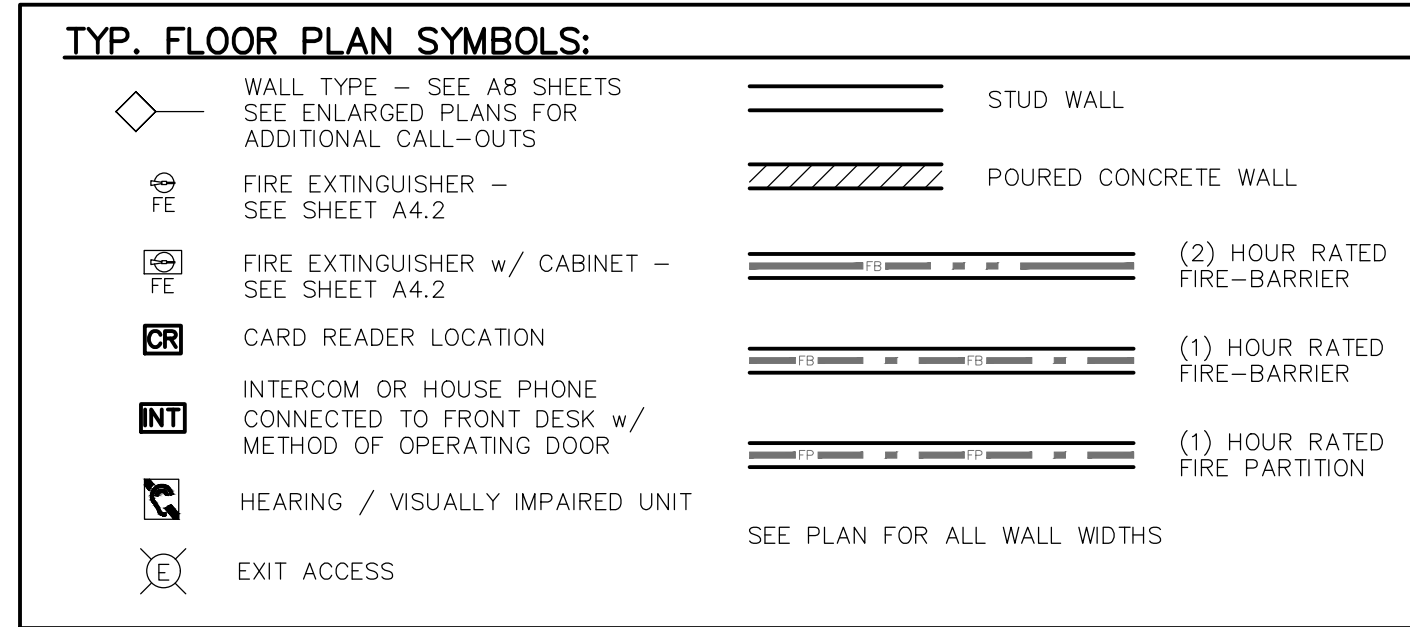


GENERAL NOTES – FLOOR PLANS:

- REFER TO ENLARGED SHEETS FOR PUBLIC SPACE & GUESTROOM PLANS, DIMENSIONS & NOTATIONS.
- FOR ALL FINISH MATERIAL DESIGNATIONS SEE 1/4" ENLARGED FINISH PLANS.
- HINGED SIDE OF DOOR TO BE LOCATED 4" FROM ADJACENT WALL, UNO. SWING DOORS & FRAMES SHALL BE INSTALLED AS SHOWN BELOW, UNO.
- REFERENCE DOOR AND WINDOW MANUFACTURERS' SPECIFICATIONS FOR ACTUAL ROUGH OPENING SIZE. SEE A6 SHEETS FOR DOOR AND WINDOW TYPES.
- FOR SPECIFIC WALL ASSEMBLY INFORMATION, SEE A8 SHEETS.
- TO THE MAXIMUM EXTENT POSSIBLE, FLOOR CLEAN OUTS ARE TO BE LOCATED IN INCONSPICUOUS PLACES AND NOT IN GUESTROOMS. ALL FLOOR CLEAN OUTS LOCATED IN CARPETED AREAS ARE TO BE FITTED WITH CARPET INSERTS. ALL CLEANOUTS ARE TO BE FLUSH TO FLOOR/WALLS.
- ALIGN FINISHES WHERE DISSIMILAR WALL TYPES MEET, UNO.
- REFER TO ELECTRICAL, MECHANICAL, AND POOL PROTOTYPE PLANS FOR INFORMATION AND LOCATIONS.
- PROVIDE PLYWOOD WALL BLOCKING WHERE ARTWORK, MARKERBOARDS (MBD) AND TACKBOARDS (TBD) ARE SHOWN. EXTENT OF BLOCKING TO MATCH SIZE OF ARTWORK, MARKERBOARDS (MBD) AND TACKBOARDS (TBD). PROVIDE WALL BLOCKING FOR FURNITURE, EQUIPMENT, FITTINGS, FIXTURES AND ACCESSORIES IN ACCORDANCE WITH MANUFACTURER RECOMMENDATIONS AND REQUIREMENTS. SEE PARTITION BLOCKING DETAILS. DESIGN LOAD FOR FITTINGS AND FIXTURES MUST INCLUDE MIN. 250 LB VERTICAL AND HORIZONTAL FORCES.
- PROVIDE VISUAL AND AUDIBLE EMERGENCY ALARM SYSTEM THROUGHOUT PUBLIC AND COMMON USE AREAS OF BUILDING.
- ALL INT. DIMS ARE FROM FACE-OF-STUD TO FACE-OF-STUD.
- ALL EXT. DIMS ARE FROM OUTSIDE FACE-OF-SHEATHING TO OUTSIDE FACE-OF-SHEATHING.
- PROVIDE 3 1/2" SOUND BATT INSULATION AROUND PERIMETER OF TOILET ROOMS AND OFFICE WALLS.
- ALL INTERIOR WALLS TO BE 2x4 OR 2x6 @ 16" O.C. (SEE FLOOR PLAN FOR SIZE) w/ 5/8" GYPSUM BOARD BOTH SIDES (U.N.O.) – EXTEND TO BOTTOM CHORD OF TRUSSES.
- ALL HEARING IMPAIRED UNITS TO HAVE THE FOLLOWING: STROBE & SOUND ACTIVATING DOORBELL w/ 5 SECOND RING. PUSH BUTTON MUST BE LOCATED ON LATCH SIDE OF DOOR. PROVIDE DOORBELL ON/OFF SWITCH WITHIN GUESTROOMS. ALARMS TO BE VISIBLE FROM ALL AREAS OF THE UNIT, CONNECTED TO THE BUILDING EMERGENCY SYSTEM. PROVIDE VOLUME CONTROLS ON ALL TELEPHONES. PROVIDE AN ACCESSIBLE ELECTRICAL OUTLET WITHIN (4') OF A TELEPHONE TO FACILITATE THE USE OF A TEXT TELEPHONE. SEE PLANS FOR LOCATION.
- RESILIENT CHANNEL TO BE INSTALLED WITH THE STRAP DOWN.
- SET FLOOR DRAINS AND FLOOR SINKS WITH TOP OF FINISH FLOOR. SLOPE CONCRETE FLOOR AT 1/8" PER FOOT TOWARDS FLOOR DRAINS AND AWAY FROM ALL WALLS. SEE FOUNDATION PLAN FOR LOCATIONS.



HOTEL UNIT RECAP

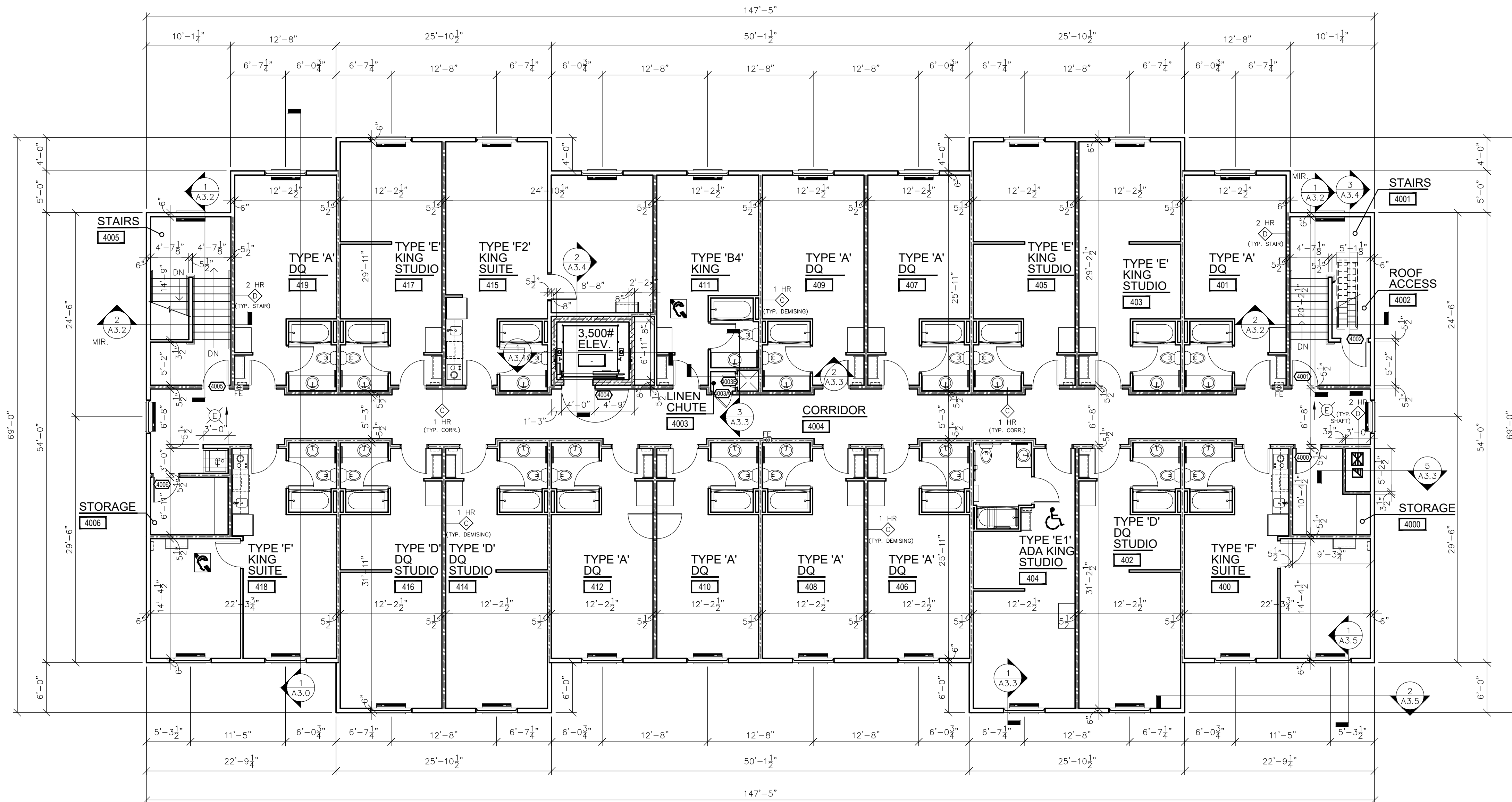
	KING	ADA KING	KING STUDIO	ADA KING STUDIO	KING SUITE	ADA KING SUITE	DQ	ADA DQ	DQ STUDIO	TOTAL
1ST FLOOR	–	–	1	–	–	–	1	1	–	3
2ND FLOOR	1	–	3	–	2	1	8	–	4	19
3RD FLOOR	1	1	3	–	3	–	7	–	4	19
4TH FLOOR	1	–	3	1	3	–	8	–	3	19
TOTAL	3	1	10	1	8	1	24	1	11	60

HEARING/VISUAL IMPAIRED UNIT QUANTITIES

	APPENDIX 'E' TABLE E104.2.1	ROOM NUMBERS PROVIDED
TOTAL NUMBER OF UNITS = 60	51-75 UNITS = 7 7 UNITS W/	117, 204, 215, 306, 317 411, 418

ACCESSIBLE UNIT QUANTITIES

	CHAPTER 11 TABLE 1108.6.1.1	ROOM NUMBERS PROVIDED
TOTAL NUMBER OF UNITS = 60	51 - 75 UNITS = 4 4 UNITS (1 ROLL-IN SHOWER)	117, 218, 312, 404

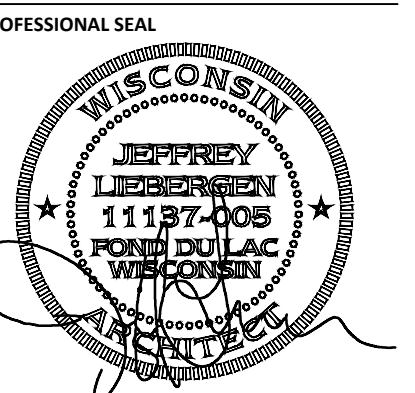


FOURTH FLOOR PLAN
SCALE: 1/8" = 1'-0"
NORTH



PROJECT INFORMATION

NEW HOTEL FOR:
COBBLESTONE HOTEL AND SUITES
WISCONSIN AVE & N GRAND AVE. • WAUKESHA, WI



SHEET DATES

ISSUE DATE: OCT. 13, 2023

REVISIONS

NO.	DESCRIPTION

JOB NUMBER
2269000

SHEET NUMBER

A1.4