

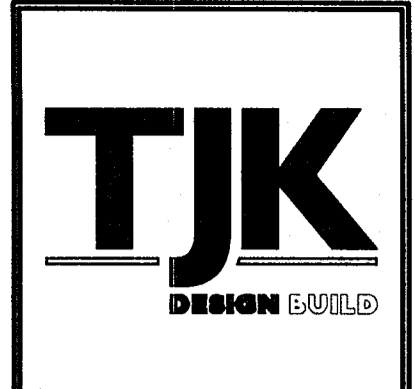
**UTILITY NOTES:**

- ALL WORK FOR THE INSTALLATION OF SANITARY SEWER, WATER AND STORM SEWER SHALL MEET THE STANDARD SPECIFICATIONS FOR SEWER AND WATER CONSTRUCTION IN WISCONSIN, CURRENT EDITION (SEWER AND WATER SPECIFICATIONS), THE REQUIREMENTS OF THE CITY OF WAUKESHA AND WISCONSIN ADMINISTRATIVE CODE COMM 82 TO 84.
- DIGGERS HOTLINE SHALL BE NOTIFIED PRIOR TO ANY EXCAVATION.
- BEDDING MATERIAL SHALL CONFORM TO SECTION 8.43.2 OF THE SEWER AND WATER SPECIFICATIONS.
- BACKFILL MATERIAL SHALL CONFORM TO SECTION 8.43.4 GRANULAR BACKFILL OF THE SEWER AND WATER SPECIFICATIONS.
- PLACEMENT OF PIPE SHALL MEET THE REQUIREMENTS OF PART III, CONSTRUCTION OF STORM AND SANITARY SEWERS OF THE SEWER AND WATER SPECIFICATIONS.
- ALL BACKFILL SHALL BE COMPACTED BY MECHANICAL COMPACTION AS SPECIFIED IN CHAPTER 2.6.14(B) OF THE WATER AND SEWER SPECIFICATIONS TO 95% OF STANDARD PROCTOR MAXIMUM DRY DENSITY. THE INITIAL LIFT OVER THE PIPE SHALL BE 18 INCHES THICK WITH SUBSEQUENT LIFTS BEING NO MORE THAN 12 INCHES IN THICKNESS. AT THE END OF THE WORKING DAY, OPEN EXCAVATIONS SHALL NOT EXCEED 25 FEET IN LENGTH AND SHALL BE BARRICADED OR STEEL PLATED.
- LENGTHS OF ALL PROPOSED UTILITIES ARE MEASURED TO THE CENTER OF STRUCTURES OR FITTINGS AND MAY VARY SLIGHTLY FROM THE DRAWINGS. LENGTHS TO BE VERIFIED IN THE FIELD DURING CONSTRUCTION.
- CONTRACTOR SHALL VERIFY ALL EXISTING ELEVATIONS, LOCATIONS AND SIZES OF SANITARY AND WATER SERVICE LATERALS AND CHECK ALL UTILITY CROSSING FOR CONFLICTS. NOTIFY THE ENGINEER PRIOR TO STARTING ANY WORK IF A CONFLICT IS FOUND.
- BUILDING PLUMBER SHALL MAKE ALL FINAL UTILITY CONNECTIONS AFTER APPROVAL AND ACCEPTANCE FROM THE PROJECT ENGINEER.
- SITE CONTRACTOR SHALL COORDINATE THE INSTALLATION OF ALL UNDERGROUND UTILITIES WITH HIS WORK.
- ALL COSTS INCURRED IN COORDINATION OF ALL NEW UTILITY SERVICES SHALL BE THE RESPONSIBILITY OF THE CONTRACTOR. CONTRACTOR SHALL PAY ALL FEES REQUIRED FOR APPLICATIONS TO INSTALL UTILITIES AND FOR AGENCY INSPECTIONS.
- SITE CONTRACTOR SHALL CLEAN ALL CONDUITS AND PIPES THAT COLLECT DEBRIS, MUD, CONCRETE, TRASH, ETC. PRIOR TO FINAL ACCEPTANCE
- OF THE PROPERTY.
- SITE CONTRACTOR SHALL COORDINATE WITH UTILITY COMPANIES FOR PLACEMENT FOR ALL NECESSARY CONDUIT PRIOR TO PAVING OPERATIONS.
- SANITARY SEWER AND STORM SEWER MUST BE PROVIDED WITH TRACER WIRE IN ACCORD WITH 182.0715(2) OF THE STATUTES. TRACER WIRE SPECIFICATIONS BELOW:
  - 12 GAUGE SOLID COPPER WIRE WITH A PLASTIC COATING.
  - TRACER WIRE SHALL BE TAPED TO THE TOP OF PLASTIC WATER OR SEWER PIPE
  - TRACER WIRE SHALL BE TAPED EVERY 6 TO 20 FEET AND AT ALL BENDS
  - TRACER WIRE SHALL HAVE AN ACCESS POINT AT A MINIMUM OF EVERY 300 FEET. AT ACCESS POINT THE TRACER WIRE IS BROUGHT UP TO THE GRADE IN VALVE BOXES, CLEANOUTS, MANHOLES, CATCH BASINS, INLETS, OR OTHER COVERED ACCESS DEVICES. WHEN RUNNING TRACE WIRE UP AT THE CURB STOPS, PUT THE WIRE ON THE OUTSIDE OF THE BOX, SO THAT THE TRACER WIRE DOESN'T GET TANGLED OR TURN WHEN THE VALVE IS TURNED.
  - SPLICES IN TRACER WIRE SHOULD BE MADE WITH SPLIT BOLT OR COMPRESSION TYPE CONNECTORS. WIRE NUTS SHALL NOT BE USED. A WATER PROOF CONNECTION IS NECESSARY TO PREVENT CORROSION.
  - THE TRACER WIRE SHALL BE TESTED AFTER INSTALLATION TO ENSURE IT IS WORKING.
- THE STORM SEWER PIPE SHALL BE ADS N-12 WITH WATER TIGHT JOINTS.
- THE ROUND CATCH BASIN FRAME & GRATE INSTALLED IN THE PARKING AREA SHALL BE NEENAH R-2556-G.
- CURB CATCH BASINS SHALL HAVE 2x3' CONCRETE BASES. THE ROUND CATCH BASINS AND MANHOLES SHALL UTILIZE A MINIMUM 42" DIAMETER STRUCTURE.
- FILTER FABRIC SHALL BE INSTALLED UNDER THE GRATES OF ALL INLETS & CATCH BASINS DURING CONSTRUCTION. CONTRACTOR SHALL CLEAN THE STORM SEWERS AND CATCH BASINS AFTER CONSTRUCTION.
- WATER SERVICE CONSTRUCTION MUST COMPLY WITH THE "SPECIFICATIONS FOR WATER MAIN & SERVICE LATERAL MATERIALS AND THE INSTALLATION OF WATER MAIN AND APPURTENANCES FOR THE WAUKESHA WATER UTILITY OF THE CITY OF WAUKESHA" DATED FEBRUARY 28, 2011.
- CONTRACTOR SHALL NOTIFY ALL UTILITIES, THE CITY OF WAUKESHA ENGINEERING DEPARTMENT AND WAUKESHA WATER UTILITY (TO ARRANGE FOR AN INSPECTOR) AT LEAST THREE DAYS PRIOR TO CONSTRUCTION.
- NO WATER SERVICES SHALL BE INSTALLED WITHOUT A WAUKESHA WATER UTILITY REPRESENTATIVE (INSPECTOR) ON SITE.
- TRACER WIRE SHALL BE INSTALLED PER THE WAUKESHA WATER UTILITY SPECIFICATIONS.
- WATER SERVICE MATERIAL SHALL BE PVC PRESSURE CLASS 200PSI, DR-14 OR CLASS 52 DUCTILE IRON PER THE WAUKESHA WATER UTILITY SPECIFICATIONS.
- SANITARY SERVICE SHALL BE 6" PVC ASTM D-3034 SDR 35 WITH RUBBER GASKET JOINTS.
- A POST CONSTRUCTION TELEVISION REPORT WILL BE REQUIRED FOR THE SANITARY SEWER MAIN LATERAL AFTER THE NEW SANITARY LATERAL IS CONSTRUCTED.



CALL DIGGERS HOTLINE  
1-800-242-8511  
TOLL FREE  
WISCONSIN STATUTE 182.0715(2) STATUTES  
NOTICE BEFORE YOU DIG  
MILWAUKEE AREA 259-1181

THE INFORMATION SHOWN ON THIS DRAWING CONCERNING TYPE AND LOCATION OF UNDERGROUND UTILITIES IS NOT GUARANTEED TO BE ACCURATE OR ALL INCLUSIVE. THE CONTRACTOR IS RESPONSIBLE FOR MAKING HIS OWN DETERMINATIONS AS TO THE TYPE AND LOCATION OF UNDERGROUND UTILITIES AS MAY BE NECESSARY TO AVOID DAMAGE THERETO.



612 WEST MAIN STREET  
MADISON, WI 53703  
608-257-1090  
FAX 608-257-1092

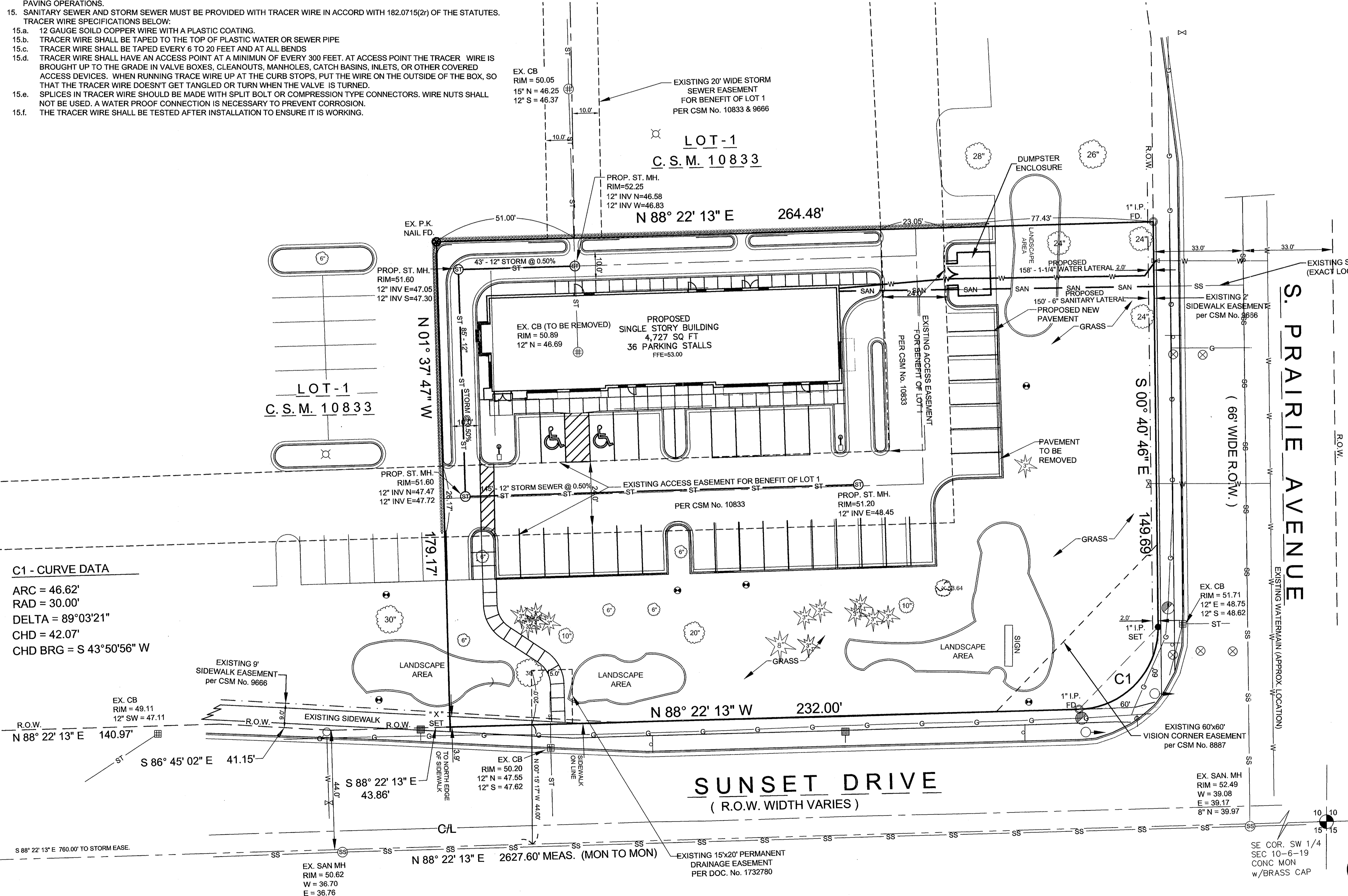
REV	DATE

**COPYRIGHTED DRAWING**  
© 2011, TJK Design Build, Inc. ALL RIGHTS RESERVED. NEITHER THIS DOCUMENT NOR THE INFORMATION HEREIN MAY BE REPRODUCED, DISTRIBUTED, USED OR DISCLOSED, IN WHOLE OR IN PART, UNLESS EXPRESSLY AUTHORIZED IN WRITING BY TJK Design Build, Inc.

SUNSET DRIVE  
WAUKESHA, WISCONSIN  
FILE NAME: S:\PROJECTS\ S8396.dwg, S8396.dwg  
FILE NO.: WAUKESHA 1169  
BOOK: WAUKESHA 191  
JOB#: S-8396

PROPOSED FACILITY FOR:  
**KLINKE COMMERCIAL DEVELOPMENT**  
JAHNKE & JAHNKE ASSOCIATES INC.  
PLANNERS & PROFESSIONAL ENGINEERS  
711 W. MORELAND BLVD. - WAUKESHA, WI 53188  
TEL. NO. (262) 542-5797 FAX (262) 542-7698  
E-MAIL: jrahmski@jahnkeandjahnke.com

**C-1.3**



**C1 - CURVE DATA**  
ARC = 46.62'  
RAD = 30.00'  
DELTA = 89°03'21"  
CHD = 42.07'  
CHD BRG = S 43°50'56" W

- LEGEND:**
- EX. MONUMENT FOUND
  - EX. 1" IRON PIPE FOUND
  - EX. P.K. NAIL FOUND
  - 1" IRON PIPE SET
  - ⊕ CHISELED CROSS SET
  - ⊙ STORM MANHOLE
  - ⊙ SANITARY MANHOLE
  - ⊙ EX. TRAFFIC SIGNAL
  - ⊙ EX. GAS VALVE
  - ⊙ EX. WATER VALVE
  - ⊙ EX. HYDRANT
  - ⊙ EX. PULL BOX
  - ⊙ EX. SPRINKLER HEAD
  - ⊙ EX. LIGHT POLE
  - ⊙ EX. STORM CATCH BASIN
  - ⊙ EX. POWER POLE
  - ⊙ EX. CONIFEROUS TREE
  - ⊙ EX. DECIDUOUS TREE
  - ST — STORM SEWER
  - SS — SANITARY SEWER
  - W — WATER MAIN
  - G — GAS MAIN



**UTILITY PLAN**  
SCALE: 1" = 20'-0"

