

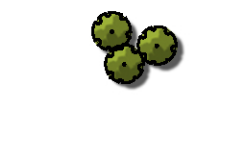
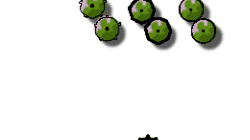



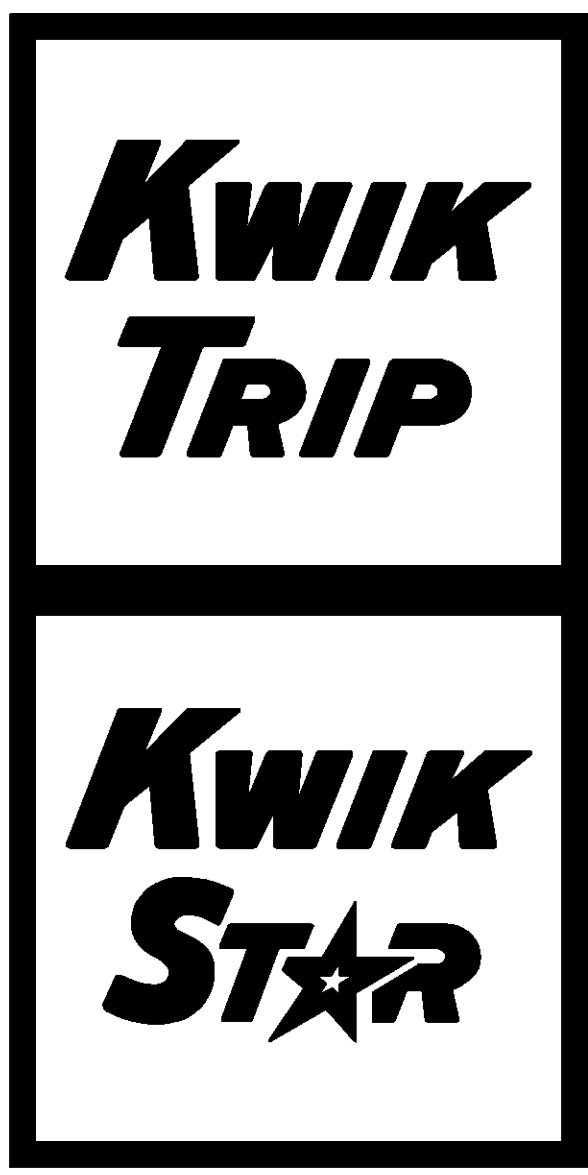
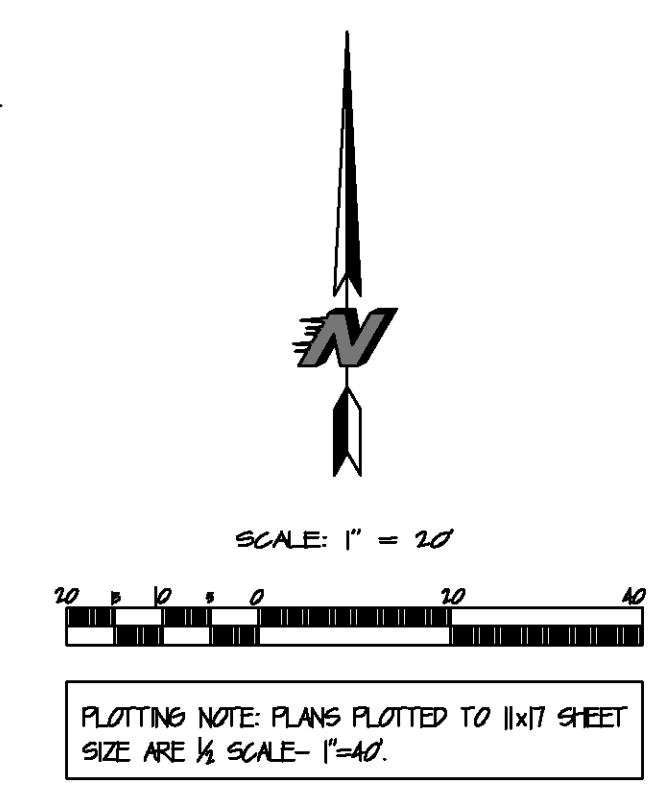




PLANT SYMBOL KEY

-  SHADE TREES - 2 1/2" CAL. BB : MAPLE, LINDEN, HONEYLOCUST, HYBRID ELM, OAK
-  EVERGREEN TREES - 7' HT. BB : SPRUCE, ARBORVITAE
-  DECIDUOUS SHRUBS - 18" POTTED: NINEBARK, PANICLE HYDRANGEA
-  FLOWERING SHRUBS - 15" POTTED: SPIREA, NINEBARK, HYDRANGEA
-  EVERGREEN SHRUBS - 18" SPR. BB: JUNIPER
-  ORNAMENTAL GRASSES - 1 GAL. POTTED: FEATHER REED GRASS, SWITCH GRASS
-  PERENNIALS - 4 1/2" POTTED: CATMINT, SEDUM BLACK-EYED SUSAN, CONEFLOWER, ETC.

TURF SEED - DURABLE, PREMIUM COMMERCIAL BLEND (TO BE SPECIFIED)  
NOTE: ALL DETAILS AND SPECIFICATIONS TO BE DETERMINED ON FINAL LANDSCAPE PLANS



KWIK TRIP, Inc.  
P.O. BOX 2107  
1626 OAK STREET  
LA CROSSE, WI 54602-2107  
PH. (608) 781-8988  
FAX (608) 781-8960

**raSmith**  
CREATIVITY BEYOND ENGINEERING  
16745 W. Bluemound Road  
Brookfield, WI 53005-5938  
(262) 781-1000  
rasmith.com

PRELIMINARY PLANS FOR  
MUNICIPAL REVIEW ONLY

CONVENIENCE STORE #1219  
 COLOR LANDSCAPE PLAN  
 LES PAUL PARKWAY  
 WAUKESHA, WI

#	DATE	DESCRIPTION

DRAWN BY	ALS
SCALE	GRAPHIC
PROJ. NO.	3210028
DATE	11/15/2021
SHEET	LP1.0