

THIS DRAWING has been prepared by the Architect, or prepared under his direct supervision as an instrument of service and is intended for use only on this project. All Drawings, Specifications, notes and designs, including the overall layout, form, arrangement, and composition of spaces and elements portrayed, constitute the original, unpublished Work of the Architect. Any reproduction, use, or disclosure of the information contained herein without the written consent of the Architect is strictly prohibited.

THE ARCHITECT DISCLAIMS responsibility for the existing building structure, site conditions, existing construction elements, or any documents, drawings or other instruments used for any part of this Project which do not bear the Architect's seal. The Architect's services are undertaken only in the interest of the Project Owner. No obligation is assumed by the Architect for the benefit of any other entity.

RELATED DOCUMENTS: This Drawing is a single component of an integrated set of Construction Documents, General and Supplementary Conditions of the Contract, General Requirements, Specifications and other Drawings may affect the Work described. Failure to review and integrate the design intent of the whole of the Construction Documents does not release the Contractor from providing a complete Project.

COMPLY WITH all laws, codes, ordinances and regulations with authority having jurisdiction and with requirements of the Contract. If applicable, Do not start Work until all permits and required approvals are obtained.

VERIFY ACTUAL CONDITIONS and dimensions prior to construction. Commencement of work constitutes verification and acceptance of all existing conditions. Application of a material or equipment item to Work without the design intent of the whole of the Construction Documents shall constitute acceptance of that Work, and assumption of responsibility for satisfactory installation.

MEASUREMENTS shown are to finish face of a material unless otherwise indicated. DIMENSIONS & MATERIAL dimensions - DO NOT SCALE drawings unless otherwise directed.

project title

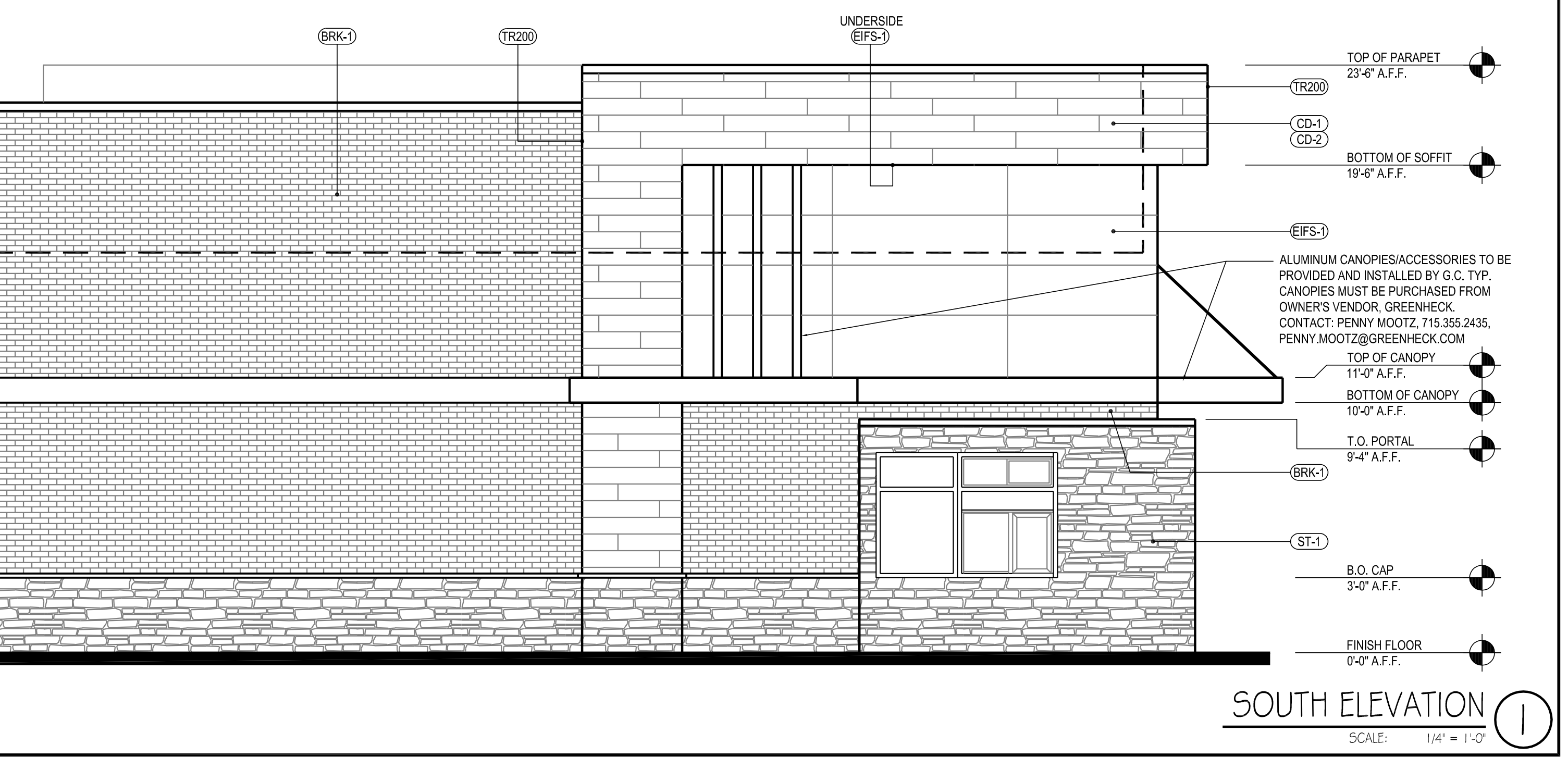
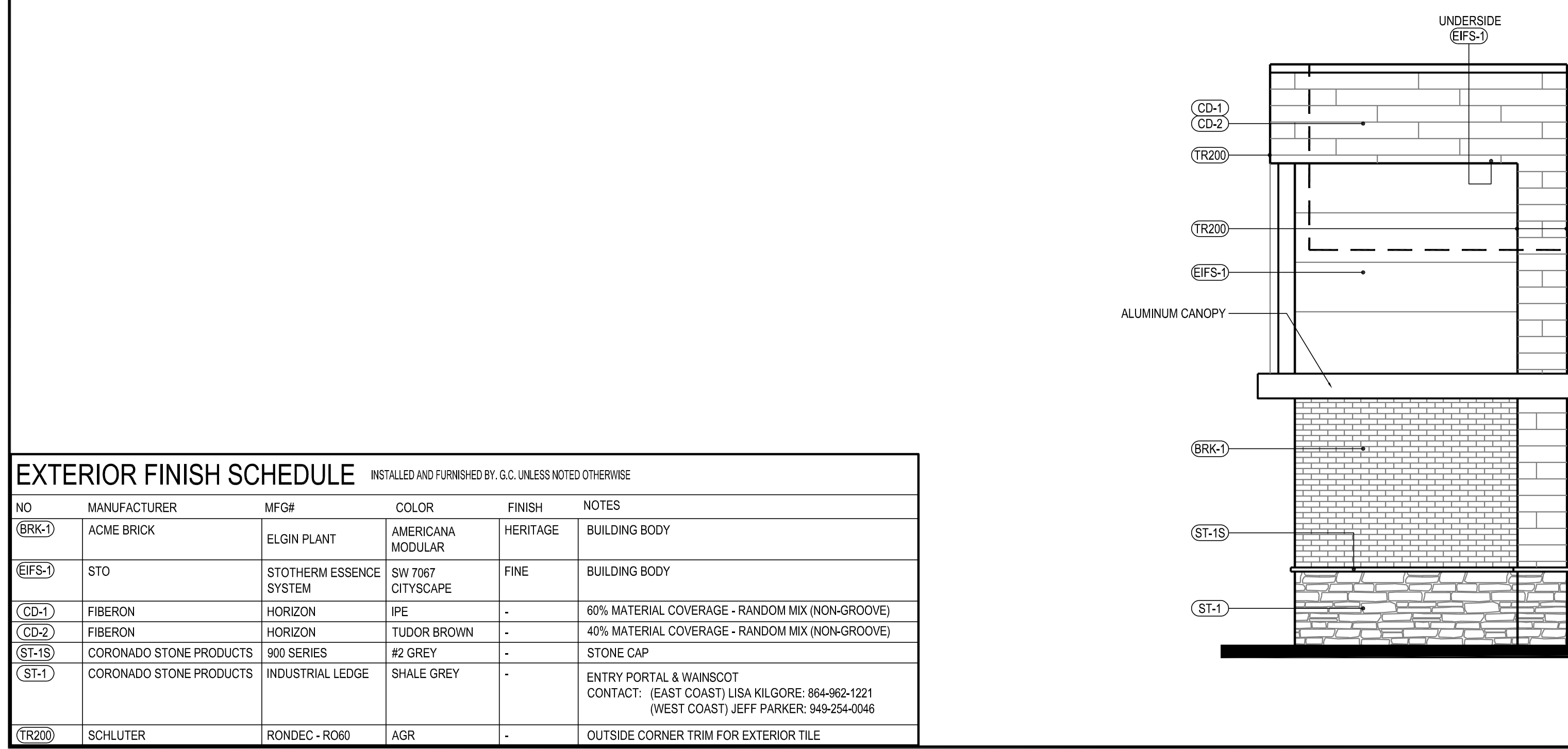
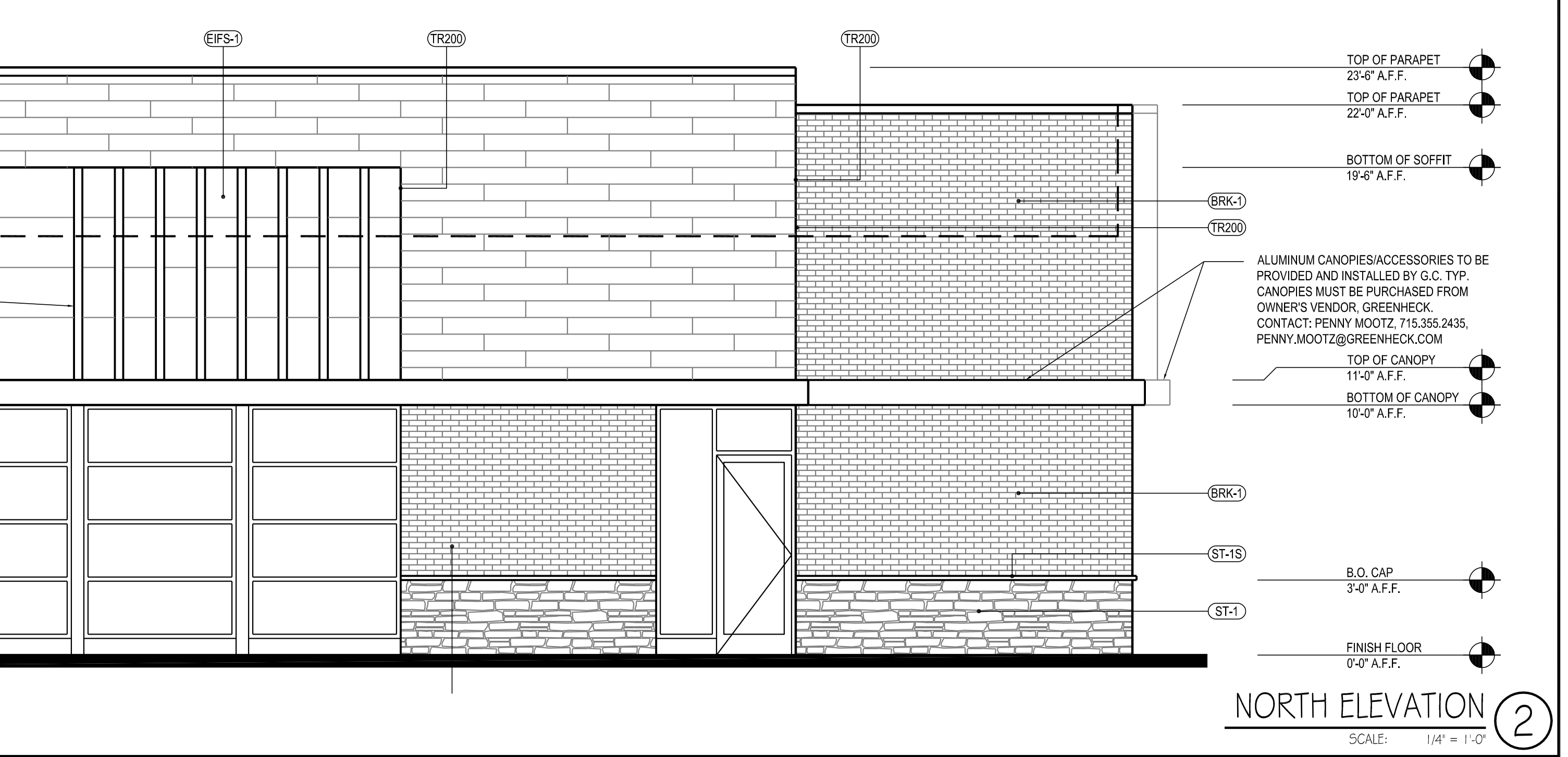
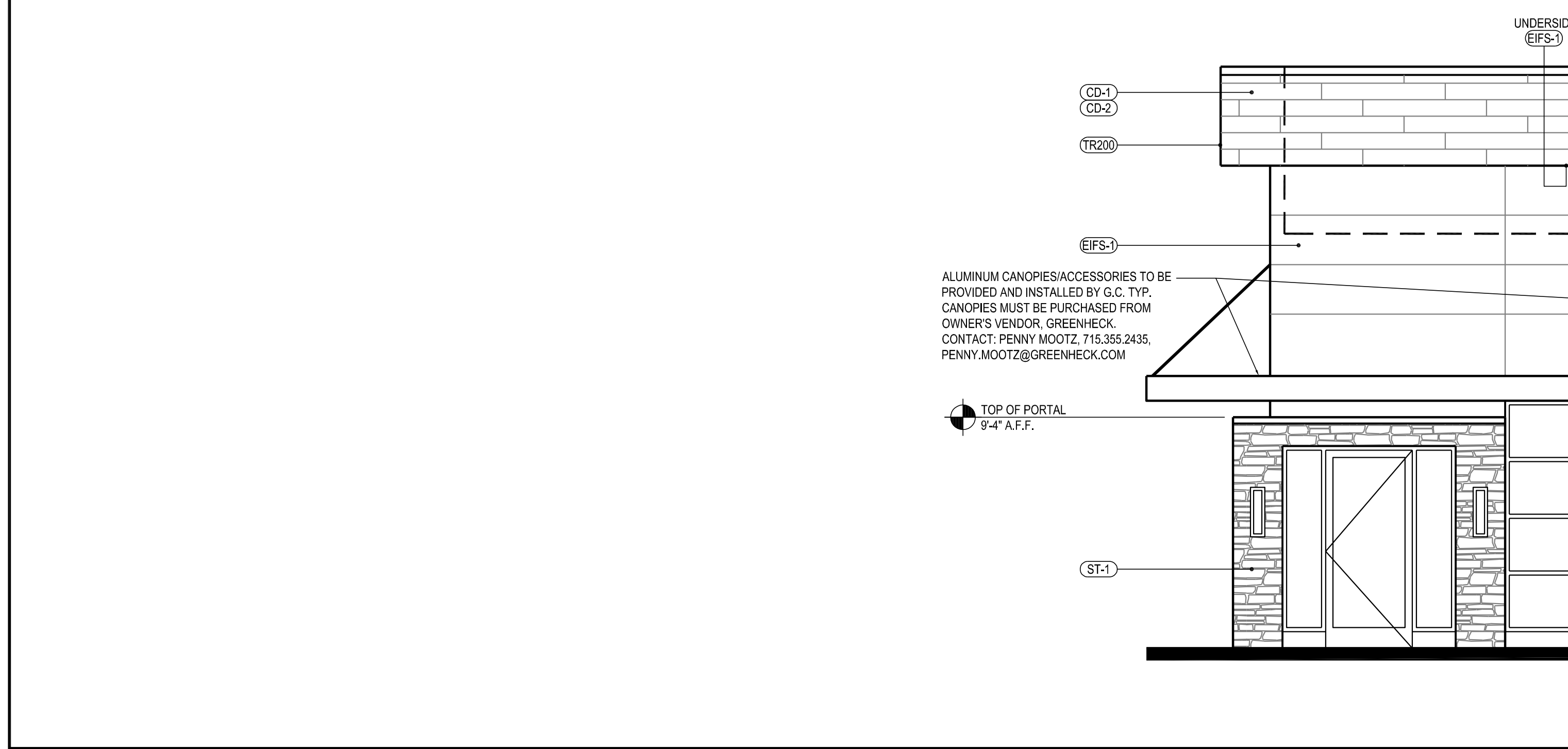
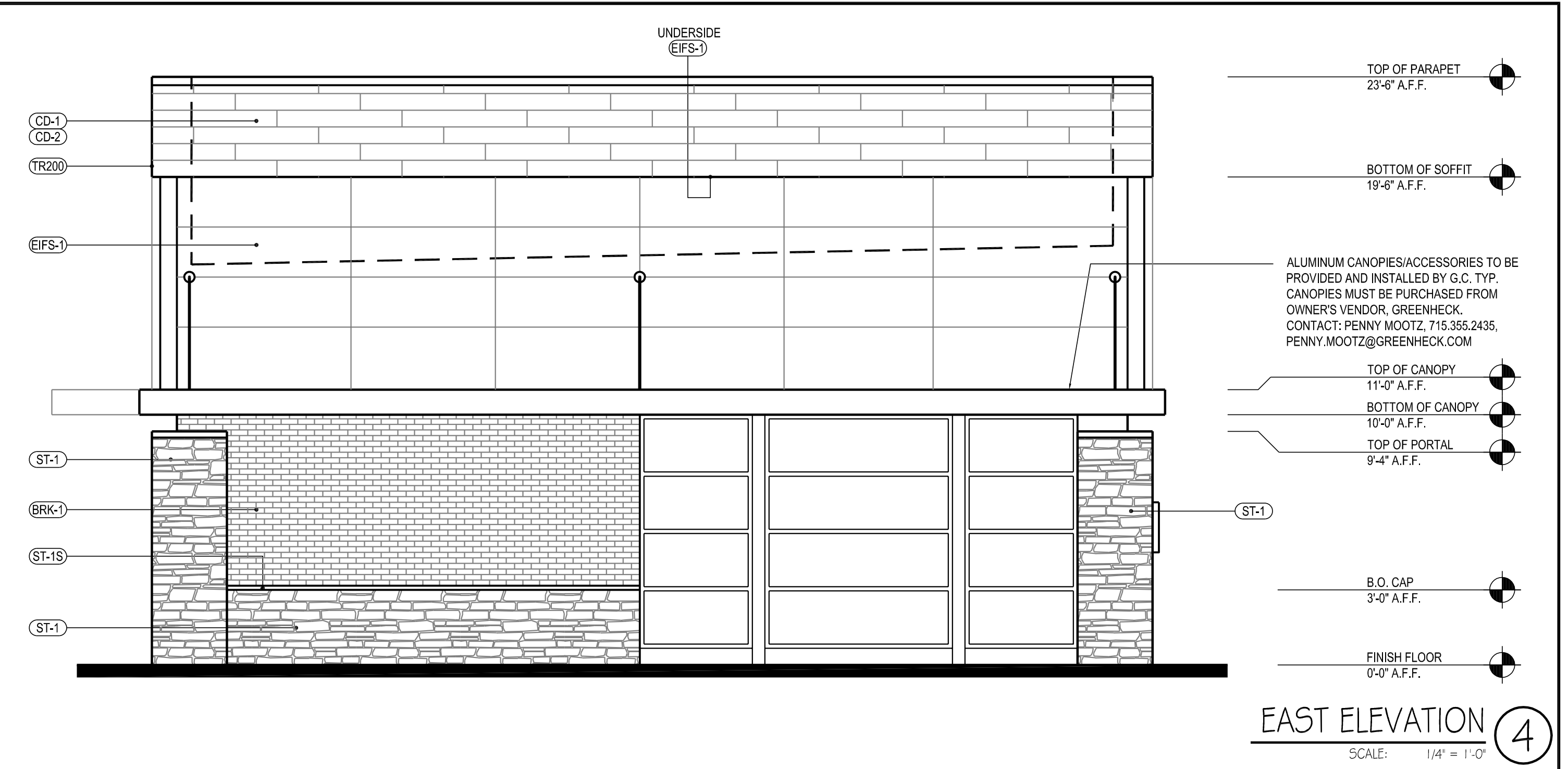
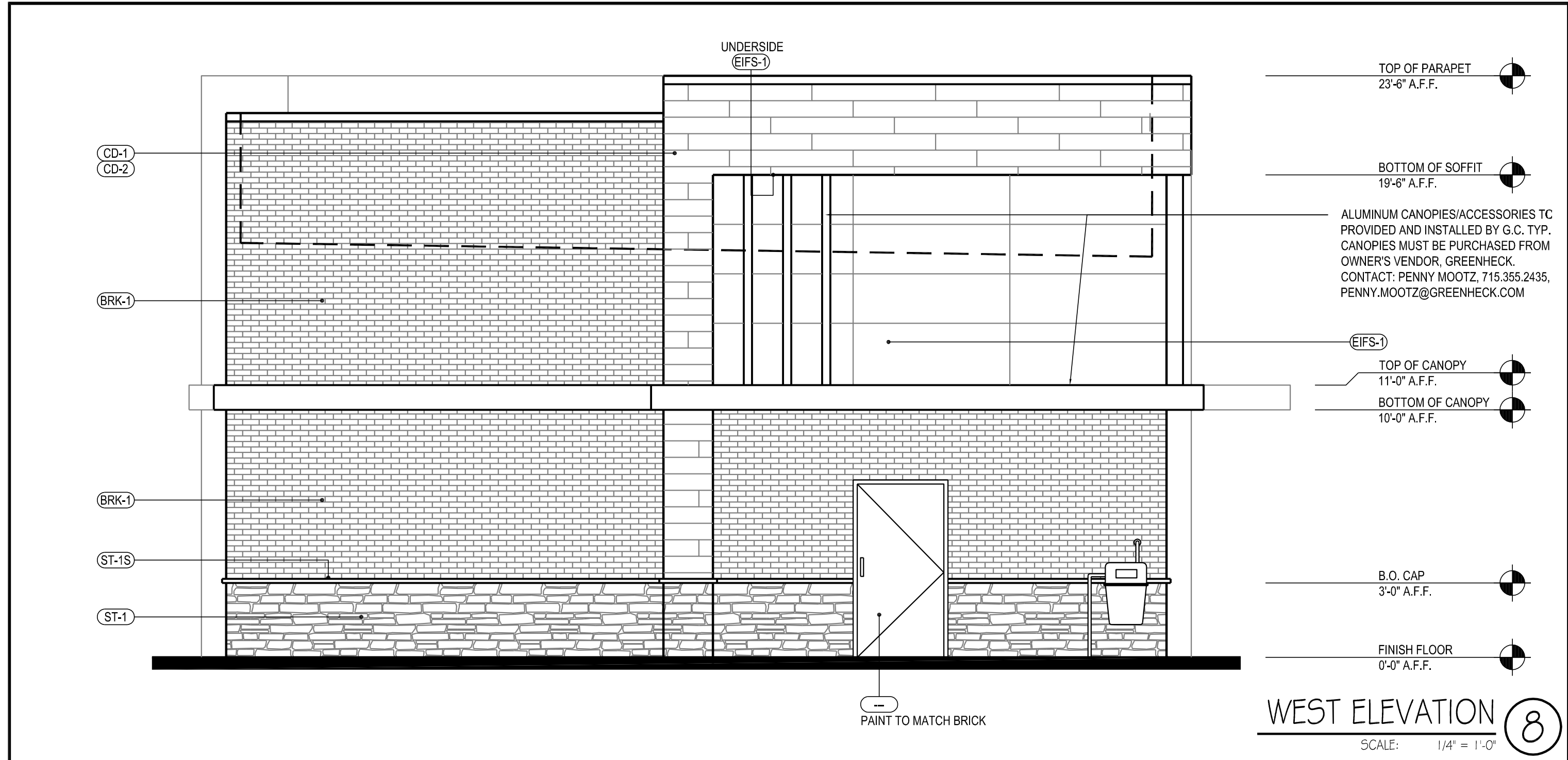
CFT & PANDA
WAKUESHA
 2720 N GRANDVIEW BLVD
 WAKUESHA, WI 53188

project number
 14045.004
 drawing issuance
 PLANNING REVIEW 07.26.2017
 drawing revisions
 No. Description: Date:

professional seal

drawing title
 PRELIMINARY
 ELEVATIONS

drawing number
A201



EXTERIOR FINISH SCHEDULE					
INSTALLED AND FINISHED BY G.C. UNLESS NOTED OTHERWISE					
NO	MANUFACTURER	MFG#	COLOR	FINISH	NOTES
(BRK-1)	ACME BRICK	ELGIN PLANT	AMERICANA MODULAR	HERITAGE	BUILDING BODY
(EIFS-1)	STO	STOTHERM ESSENCE SYSTEM	SW 7067 CITYSCAPE	FINE	BUILDING BODY
(CD-1)	FIBERON	HORIZON	IPE	-	60% MATERIAL COVERAGE - RANDOM MIX (NON-GROOVE)
(CD-2)	FIBERON	HORIZON	TUDOR BROWN	-	40% MATERIAL COVERAGE - RANDOM MIX (NON-GROOVE)
(ST-1S)	CORONADO STONE PRODUCTS	900 SERIES	#2 GREY	-	STONE CAP
(ST-1)	CORONADO STONE PRODUCTS	INDUSTRIAL LEDGE	SHALE GREY	-	ENTRY PORTAL & WAINSCOT CONTACT: (EAST COAST) LISA KILGORE: 864-962-1221 (WEST COAST) JEFF PARKER: 949-254-0046
(TR200)	SCHLUTER	RONDEC - R060	AGR	-	OUTSIDE CORNER TRIM FOR EXTERIOR TILE