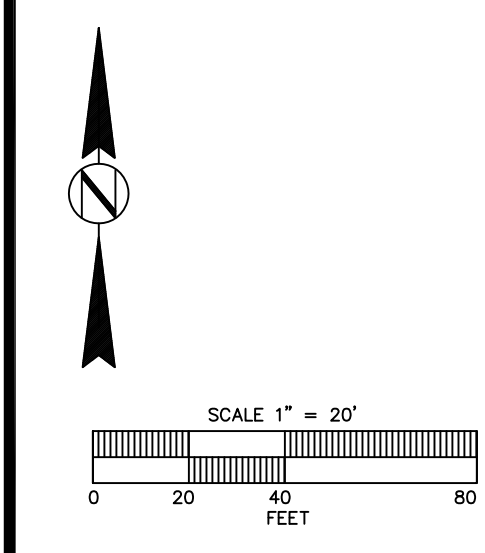
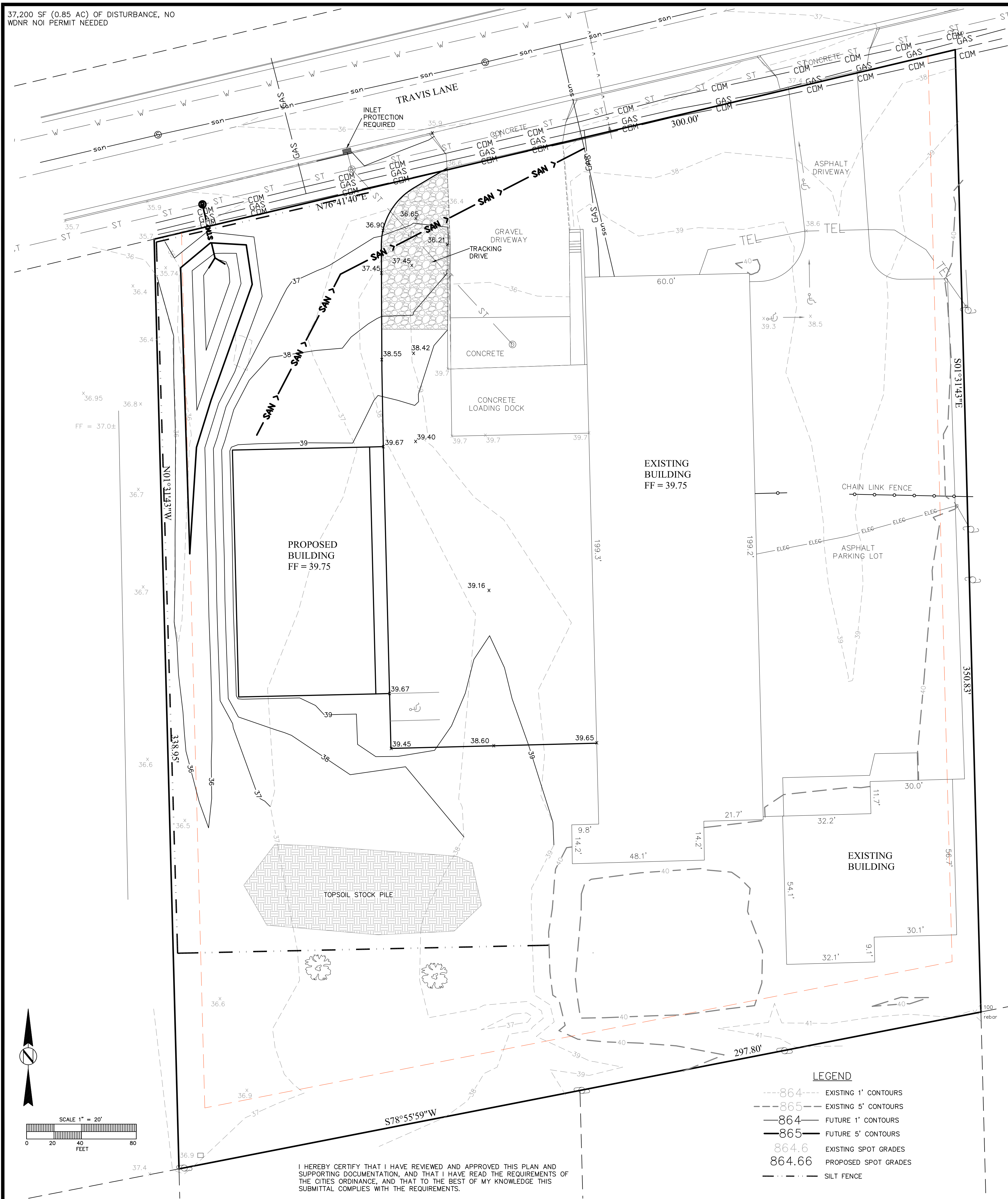


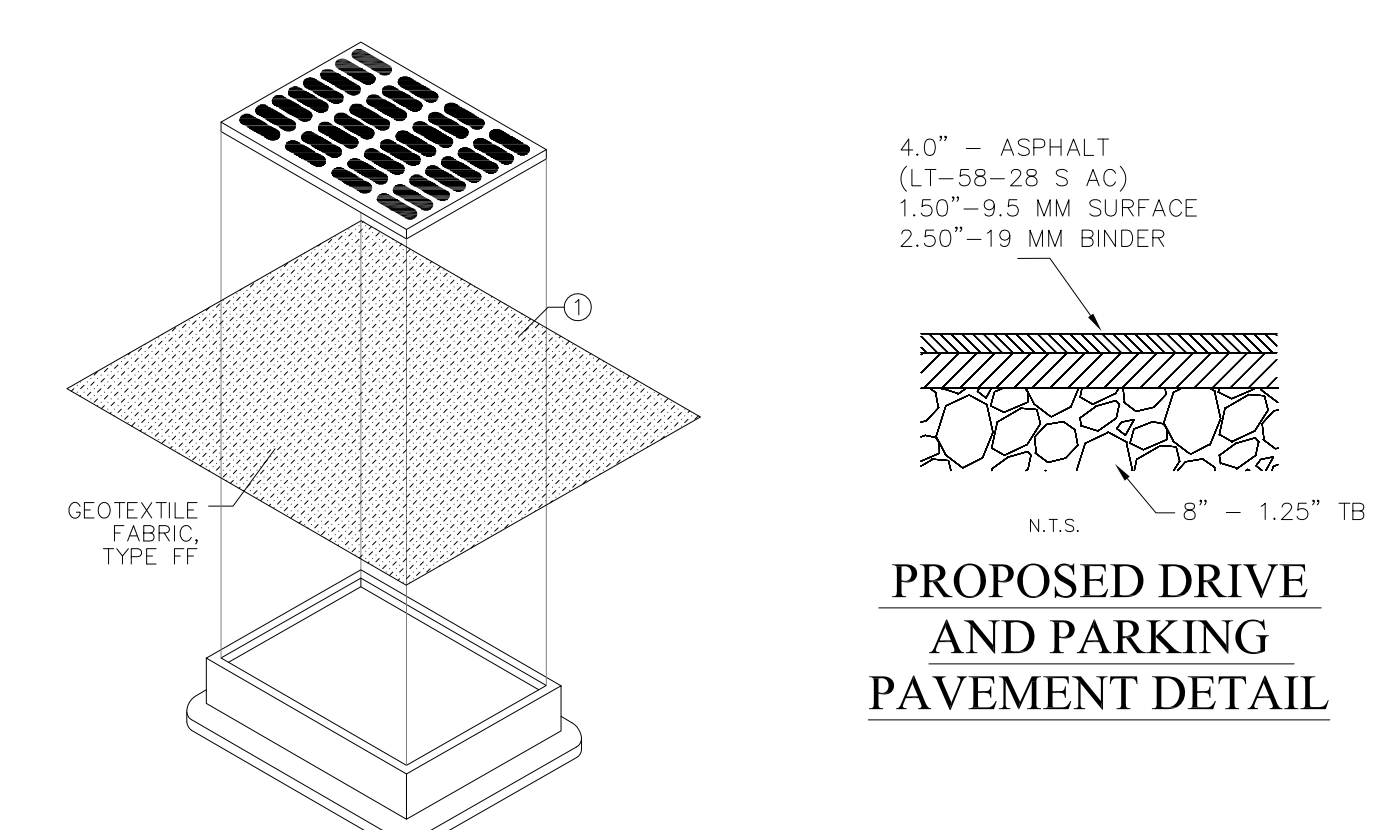
37,200 SF (0.85 AC) OF DISTURBANCE, NO WDNR NOI PERMIT NEEDED



I HEREBY CERTIFY THAT I HAVE REVIEWED AND APPROVED THIS PLAN AND SUPPORTING DOCUMENTATION, AND THAT I HAVE READ THE REQUIREMENTS OF THE CITY ORDINANCE, AND THAT TO THE BEST OF MY KNOWLEDGE THIS SUBMITTAL COMPLIES WITH THE REQUIREMENTS.

**LEGEND**

---864---	EXISTING 1' CONTOURS
---865---	EXISTING 5' CONTOURS
---864---	FUTURE 1' CONTOURS
---865---	FUTURE 5' CONTOURS
864.6	EXISTING SPOT GRADES
864.66	PROPOSED SPOT GRADES
---	SILT FENCE



**INLET PROTECTION - TYPE B**  
(WITHOUT CURB BOX) N.T.S.  
THIS DRAWING BASED ON WI D.O.T. STANDARD DETAIL DRAWING 8 E 10-2

**GENERAL NOTES**

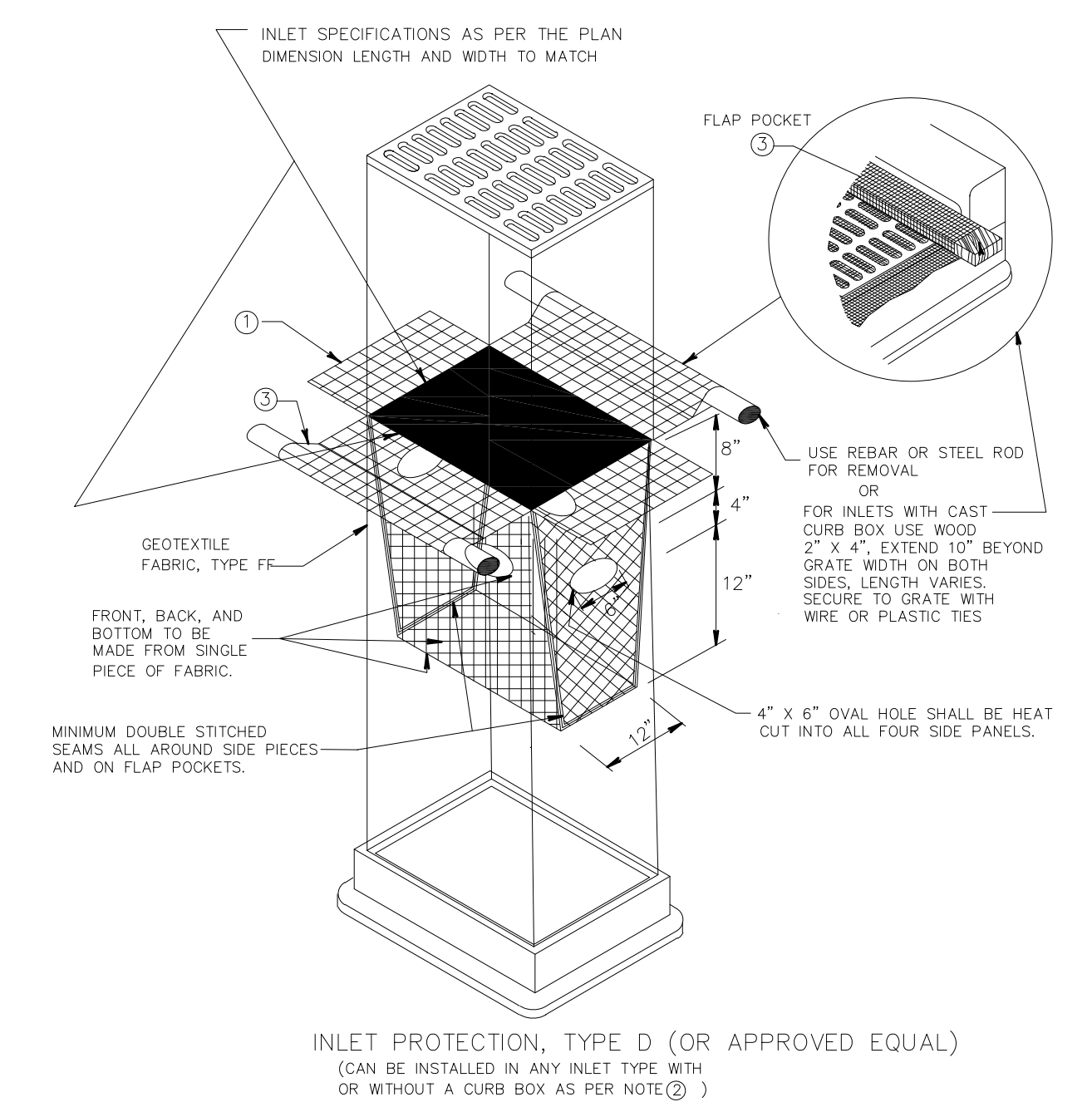
MANUFACTURED ALTERNATIVES APPROVED AND LISTED ON THE WI D.O.T.'S EROSION CONTROL PRODUCT ACCEPTABILITY LIST (P.A.L.) MAY BE SUBSTITUTED.

WHEN REMOVING OR MAINTAINING INLET PROTECTION, CARE SHALL BE TAKEN SO THAT THE SEDIMENT TRAPPED ON THE GEOTEXTILE FABRIC DOES NOT FALL INTO THE INLET. ANY MATERIAL FALLING INTO THE INLET SHALL BE REMOVED IMMEDIATELY.

① FINISHED SIZE, INCLUDING FLAP POCKETS WHERE REQUIRED, SHALL EXTEND A MINIMUM OF 10' AROUND THE PERIMETER TO FACILITATE MAINTENANCE OR REMOVAL.

**INSTALLATION NOTES - TYPE B**

TRIM EXCESS FABRIC IN THE FLOW LINE TO WITHIN 3" OF THE GRATE. THE CONTRACTOR SHALL DEMONSTRATE A METHOD OF MAINTENANCE, USING A SEEN FLAP, HAND HOLES OR OTHER METHOD TO PREVENT ACCUMULATED SEDIMENT FROM ENTERING THE INLET.



**INSTALLATION NOTES**

**TYPE D**

DO NOT INSTALL INLET PROTECTION TYPE D IN INLETS SHALLOWER THAN 30", MEASURED FROM THE BOTTOM OF THE INLET TO THE TOP OF THE GRATE.

TRIM EXCESS FABRIC IN THE FLOW LINE TO WITHIN 3" OF THE GRATE.

THE INSTALLED BAG SHALL HAVE A MINIMUM SIDE CLEARANCE, BETWEEN THE INLET WALLS AND THE BAG, MEASURED AT THE BOTTOM OF THE OVERFLOW HOLES, OF 3", WHERE NECESSARY THE CONTRACTOR SHALL CINCH THE BAG, USING PLASTIC ZIP TIES, TO ACHIEVE THE 3" CLEARANCE. THE TIES SHALL BE PLACED AT A MAXIMUM OF 4" FROM THE BOTTOM OF THE BAG.

**GENERAL NOTES**

1. INLET PROTECTION TO BE INSTALLED PER WI DNR TECHNICAL STANDARDS TS 1060.

2. INLET PROTECTION DEVICES SHALL BE MAINTAINED BY THE DIRECTION OF VILLAGE ENGINEER.

3. MANUFACTURED ALTERNATIVES APPROVED AND LISTED ON THE DEPARTMENT'S EROSION CONTROL PRODUCT ACCEPTABILITY LIST (P.A.L.) MAY BE SUBSTITUTED.

4. WHEN REMOVING OR MAINTAINING INLET PROTECTION, CARE SHALL BE TAKEN SO THAT THE SEDIMENT TRAPPED ON THE GEOTEXTILE FABRIC DOES NOT FALL INTO THE INLET. ANY MATERIAL FALLING INTO THE INLET SHALL BE REMOVED IMMEDIATELY.

5. FINISHED SIZE OF GEOTEXTILE FABRIC, INCLUDING FLAP POCKETS WHERE REQUIRED, SHALL EXTEND A MINIMUM OF 10' AROUND THE PERIMETER TO FACILITATE MAINTENANCE OR REMOVAL.

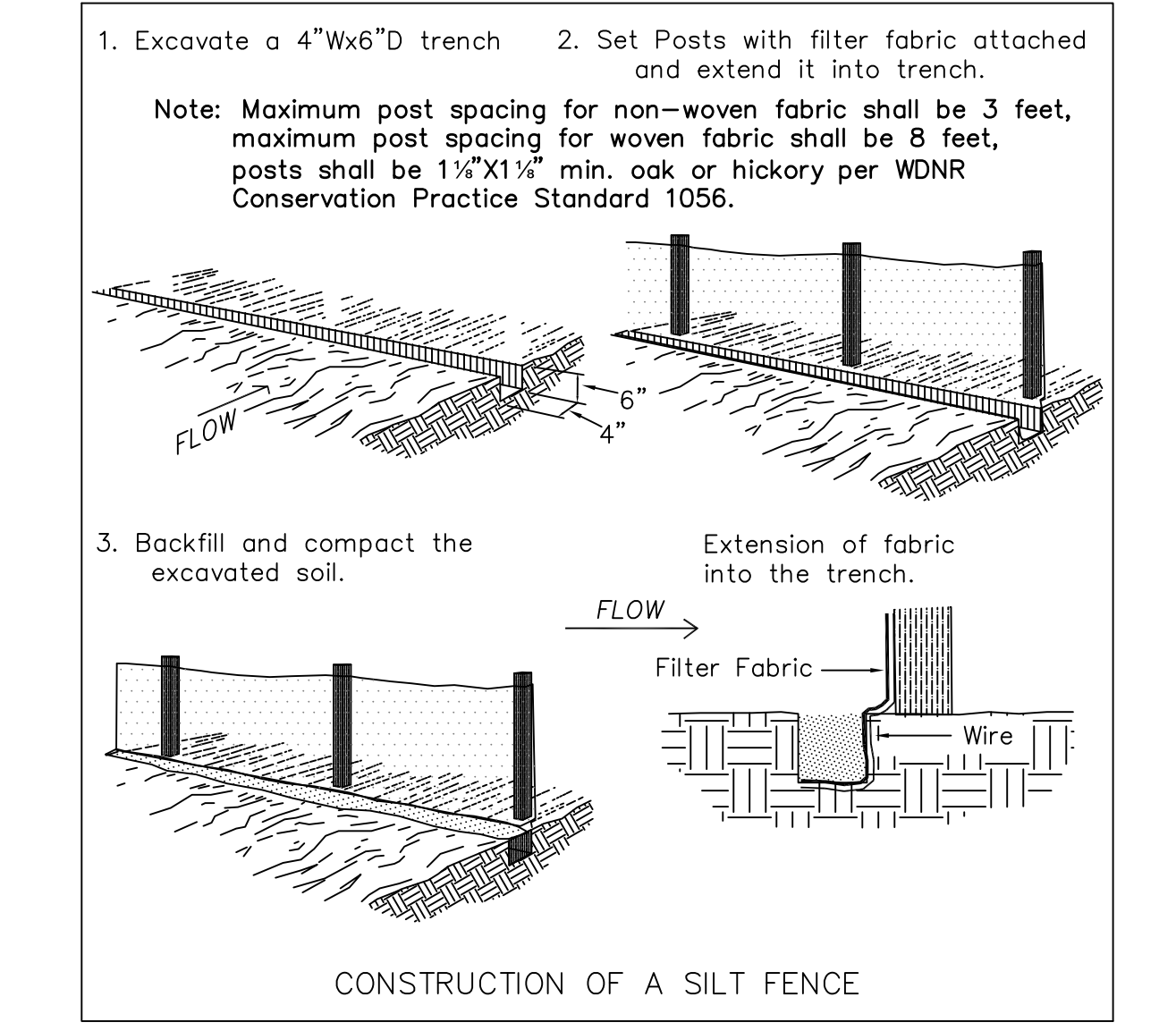
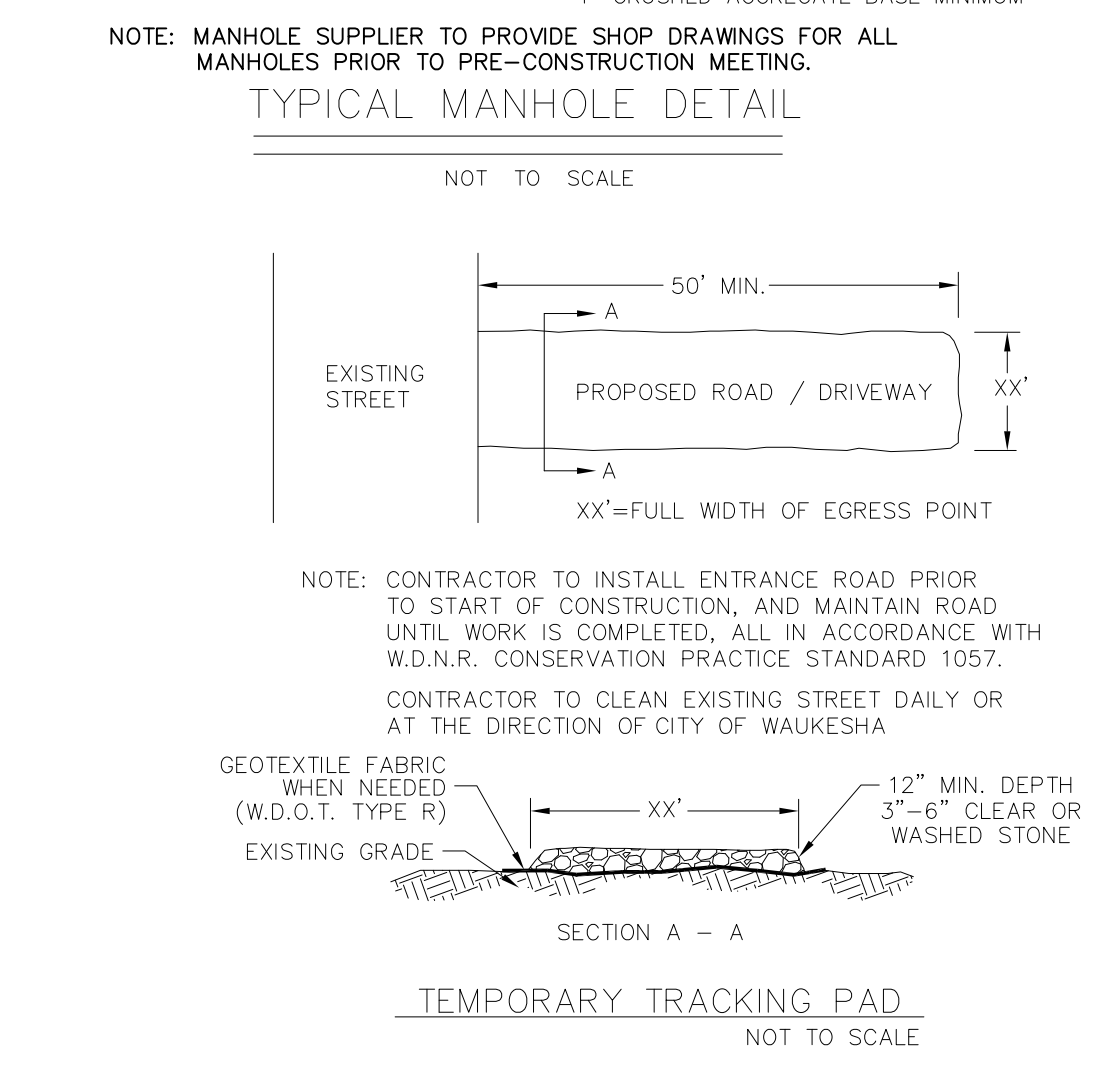
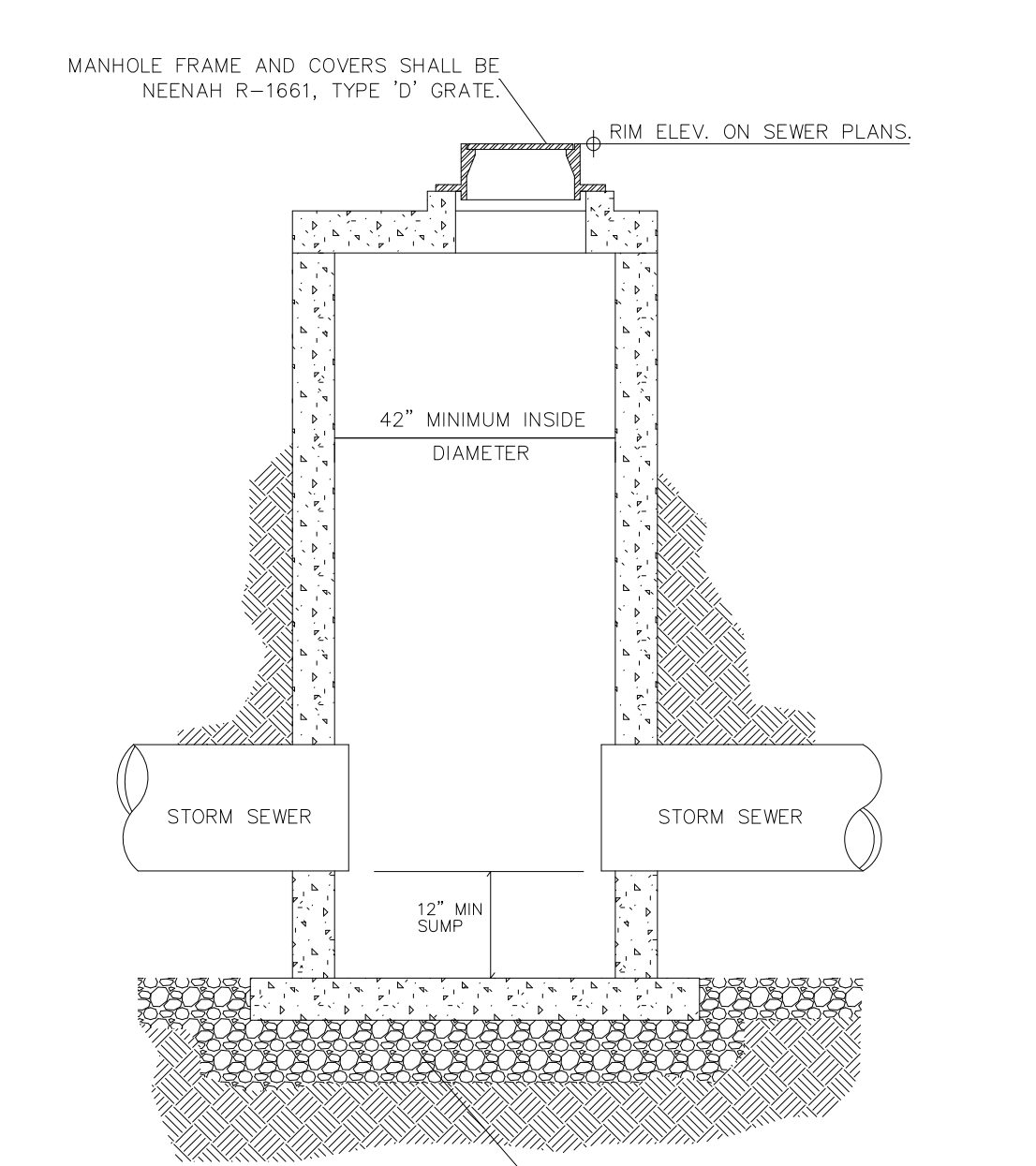
6. FINISHED SIZE, INCLUDING FLAP POCKETS WHERE REQUIRED, SHALL EXTEND A MINIMUM OF 10' AROUND THE PERIMETER TO FACILITATE MAINTENANCE OR REMOVAL.

7. FOR INLET PROTECTION, TYPE C (WITH CURB BOX), AN ADDITIONAL 18" OF FABRIC IS WRAPPED AROUND THE WOOD AND SECURED WITH STAPLES. THE WOOD SHALL NOT BLOCK THE ENTIRE HEIGHT OF THE CURB BOX OPENING.

8. FLAP POCKETS SHALL BE LARGE ENOUGH TO ACCEPT WOOD 2X4.

This drawing based on Wisconsin Department of Transportation Standard Detail Drawing 8 E 10-2.

**INLET PROTECTION**  
TYPE A, B, C, AND D



IN ACCORDANCE WITH WISCONSIN STATUTE 182.0175, DAMAGE TO TRANSMISSION FACILITIES, EXCAVATOR SHALL BE SOLELY RESPONSIBLE TO PROVIDE ADVANCE NOTICE TO THE DESIGNATED 'ONE CALL SYSTEM' NOT LESS THAN THREE WORKING DAYS PRIOR TO COMMENCEMENT OF ANY EXCAVATION REQUIRED TO PERFORM WORK CONTAINED ON THIS DRAWING, AND FURTHER, EXCAVATOR SHALL COMPLY WITH ALL OTHER REQUIREMENTS OF THIS STATUTE RELATIVE TO EXCAVATOR'S WORK.

**DIGGERS HOTLINE**

Toll Free (800) 242-8511  
Milwaukee Area (414) 259-1181  
Hearing Impaired TDD (800) 542-2289  
www.DiggersHotline.com

**WISCONSIN**

ROBERT J. DAVY  
E-31946  
OCCONOMOWOC, WI

**PROFESSIONAL ENGINEER**

**LAKE COUNTRY ENGINEERING, INC.**  
Consulting Engineers - Surveyors  
970 S. Silver Lake Street, Suite 105, Oconomowoc, WI 53066  
Phone (262) 569-9331 Fax (262) 569-9316

**GRADING AND EROSION CONTROL PLAN**  
OLIVER / PORTPAINTING  
313 TRAVIS LANE  
SE 1/4 OF S.15, T.6N., R.19 E., CITY OF WAUKESHA

REVISION	DATE	REMARKS

SCALE: 1" = 20'  
DRAFTED BY: R.J.D.  
CHECKED BY: R.J.D.  
DATE: JUNE 1, 2018

PROJ. # 18-3235  
SHEET # 3 OF 3