

WEST SITE - 1.27 ACRES

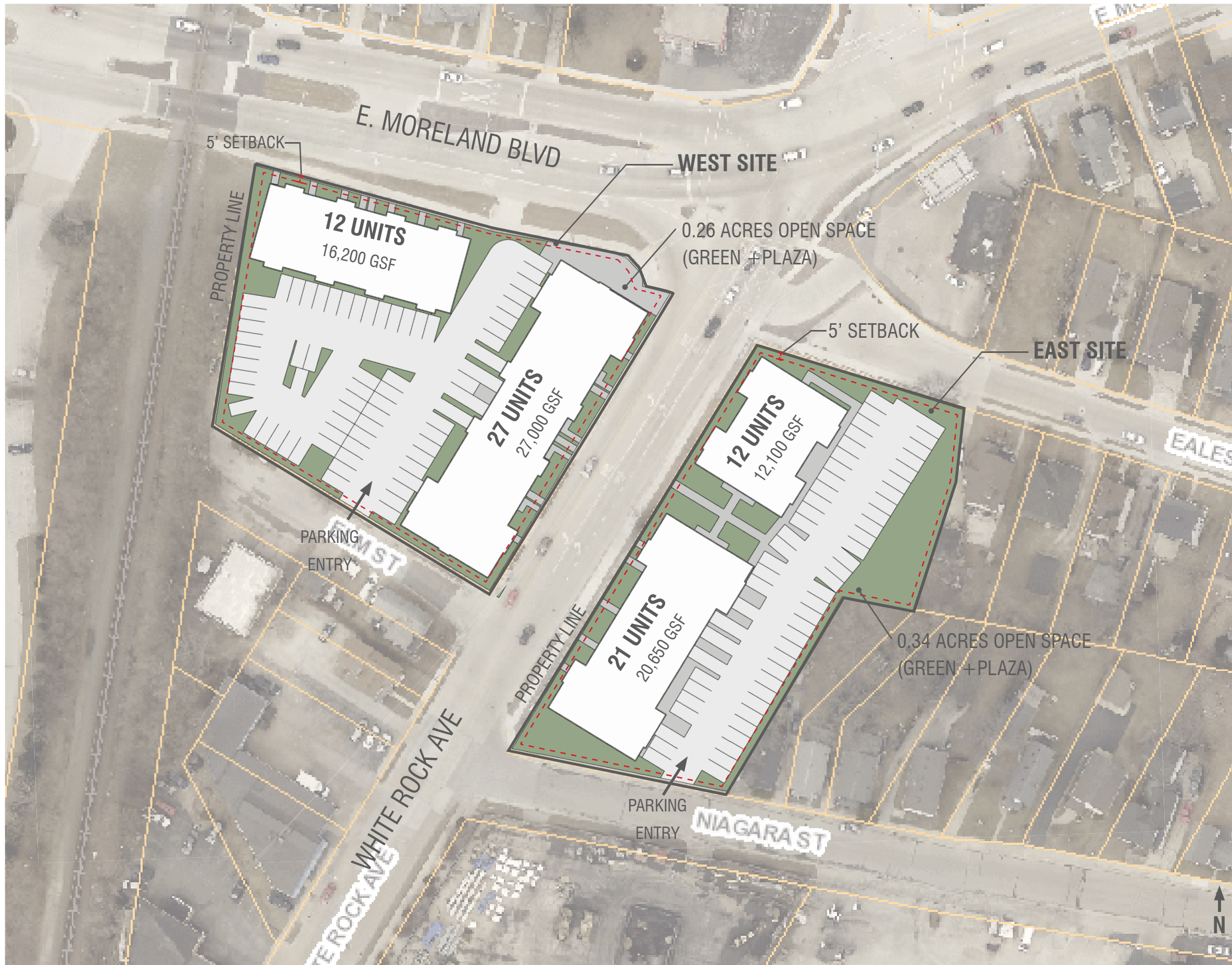
1003-048:	.69 ACRES
1003-049:	.10 ACRES
1003-050:	.18 ACRES
CITY LAND:	.30 ACRES

EAST SITE - 1.19 ACRES

1003-046:	.18 ACRES
1003-047:	.46 ACRES
1003-950:	.55 ACRES

SITE PARCELS

COPYRIGHT © 2018 KAHLER SLATER, INC. ALL RIGHTS RESERVED



WEST SITE - 1.27 ACRES

1BR: 17 UNITS
 2BR: 10 UNITS
 3BR: 12 UNITS

TOTAL: 39 UNITS

PARKING

SURFACE: 69 STALLS
 GARAGE: 6 STALLS

TOTAL: 75 STALLS
 PARKING RATIO: 1.92

EAST SITE - 1.19 ACRES

1BR: 16 UNITS
 2BR: 17 UNITS

TOTAL: 33 UNITS

PARKING

SURFACE: 60 STALLS
 GARAGE: 5 STALLS

TOTAL: 65 STALLS
 PARKING RATIO: 1.97

TOTAL DEVELOPMENT

1BR: 33 UNITS
 2BR: 27 UNITS
 3BR: 12 UNITS

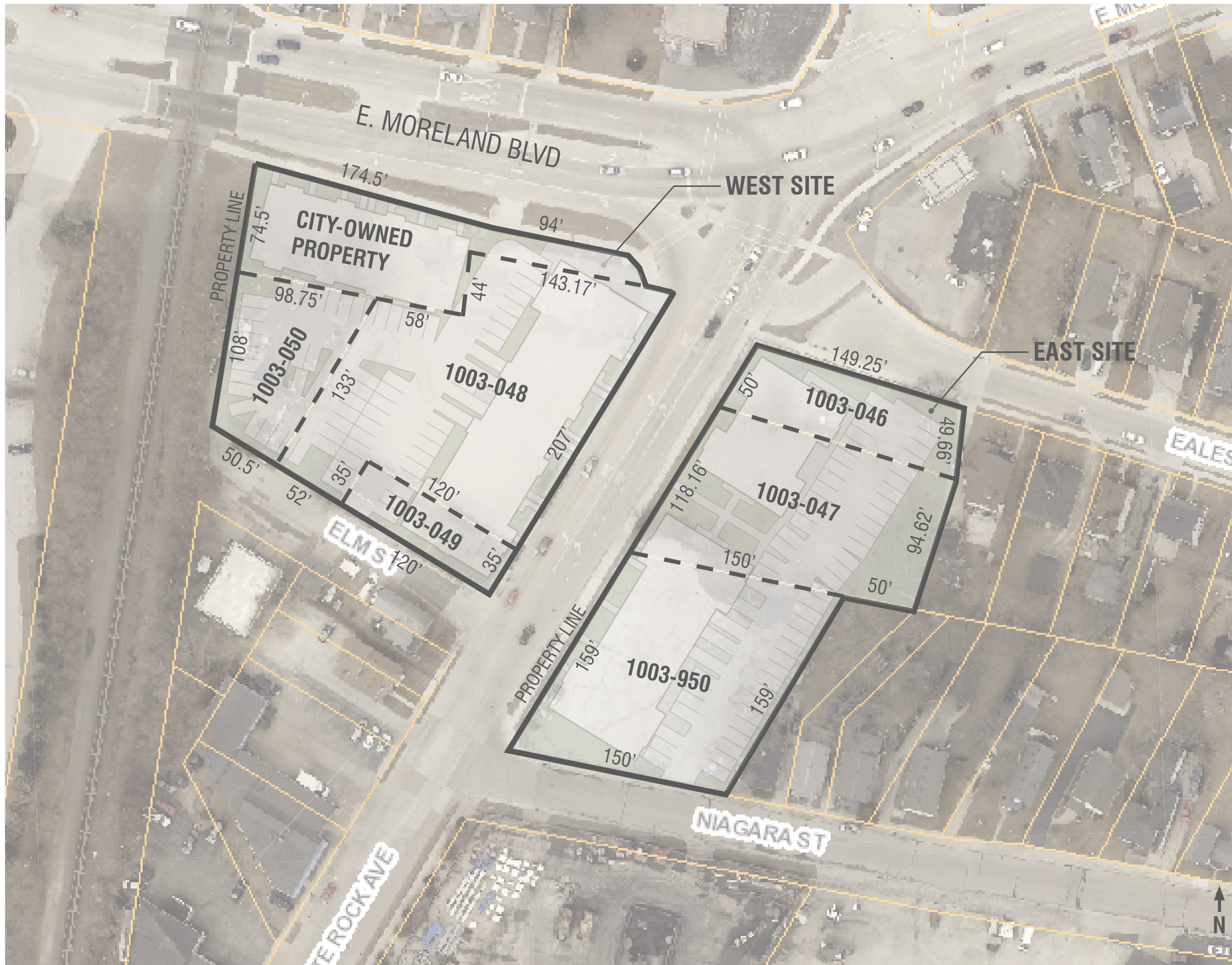
TOTAL: 72 UNITS

PARKING

SURFACE: 129 STALLS
 GARAGE: 11 STALLS

TOTAL: 140 STALLS
 PARKING RATIO: 1.97

SITE PLAN



WEST SITE - 1.27 ACRES

1003-048:	.69 ACRES
1003-049:	.10 ACRES
1003-050:	.18 ACRES
CITY LAND:	.30 ACRES

EAST SITE - 1.19 ACRES

1003-046:	.18 ACRES
1003-047:	.46 ACRES
1003-950:	.55 ACRES

SITE PLAN