

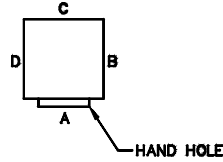
## FEATURES & SPECIFICATIONS

**CONSTRUCTION** - Welds conform to applicable AWS structural welding code. Pole shaft is one piece, low carbon alloy steel per ASTM A595, Grade A or ASTM A500, Grade C with 50,000-PSI minimum yield strength. Pole base shall be per ASTM A36 and shall telescope pole shaft and be circumferentially welded top and bottom. Hand hole is 2" x 4" minimum, cover and fasteners are included. Base covers shall be two piece, interlocking construction. Finish shall match pole. Removable pole cap shall be provided with each drill pattern type pole. Non-structural fasteners shall be stainless steel.

**FINISH** - Galvanized poles per ASTM A123. Painted poles shall be semi-gloss powder paint.

**GROUNDING** - Grounding provision shall be immediately accessible through hand hole, 1/2-13 threads.

**ANCHOR BOLTS** - Steel anchor bolts shall be per AASHTO M314 or ASTM F 1554 - Grade 55, hot dip galvanize. Nuts and washers shall be per AASHTO M314-90 or ASTM F 1554 - hot dip galvanized.



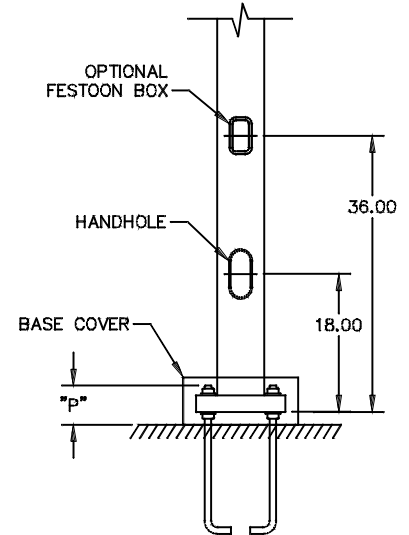
POLE TOP STYLE	ORIENTATION
D1 1 UNIT	C
D2 2 UNITS @ 180	B,D
D3 3 UNITS @ 90	B,C,D
D4 4 UNITS @ 90	A,B,C,D
D5 2 UNITS @ 90	B,C

**DRILL PATTERN ORIENTATION**

Catalog Number	
Order Number	Type

# SSS

## SQUARE STRAIGHT STEEL POLES



## POLE ORDERING DATA

How to construct a catalog number for SSS poles:

**EXAMPLE** SSS2555C D1 R3 BZ 1 Fill in Catalog Number \_\_\_\_\_

STEP	CATALOG NUMBER	DESCRIPTION
1. BASE POLE	(SEE SHEET 2)	SQUARE STRAIGHT STEEL
2. POLE TOP STYLE	D1 DRILLING FOR 1 UNIT D2 DRILLING FOR 2 UNITS @ 180 D3 DRILLING FOR 3 UNITS @ 90 D4 DRILLING FOR 4 UNITS @ 90 D5 DRILLING FOR 2 UNITS @ 90 P2 TENON, 2.38 O.D. X 4" LG. P3 TENON, 3.50 O.D. X 6" LG. P4 TENON, 4.00 O.D. X 6" LG. P5 TENON 2.88 O.D. X 4" LG.	4. FINISH BK BLACK PAINT BZ BRONZE PAINT GN GREEN PAINT GR GRAY PAINT HG HOT DIP GALVANIZED PP PRIME PAINT WH WHITE PAINT
3. POLE TOP DRILL PATTERN	H1 PARKPACK, HORZ NO ARM H3 PARKPACK, HORZ WITH ARM J4 MIRROSTAR ONLY R2 MOD 600 & SOMERSET ONLY R3 MONGOOSE ONLY T3 POLESTAR ONLY W5 PARKPACK, VERT NO ARM ND NO DRILL PATTERN AF1 AEL 53 AF2 AEL 153 AF3 AEL LS, LM AF5 AEL AVL W/A OPTION AF6 AEL ASA & AVL	5. OPTIONS 1 FESTOON BOX 3 TAMPER RESISTANT SCREWS 4 VIBRATION DAMPENER

**NOTES:**

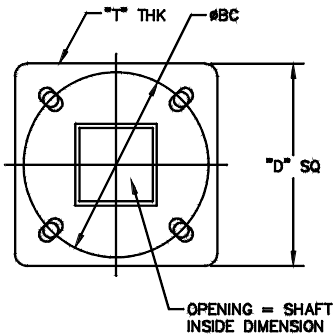
- Pole top drill pattern types H1 - W5 are available on drilled pole tops only. ND is only available on tenon pole tops.
- The Festoon Box is located on the same side as the hand hole, 36" above pole base. Receptacle / Cover are not included.

**HOLOPHANE®**

# SSS Square Straight Steel Poles

NON-AASHTO Rating					
90 mph + 1.14 gust		100 mph + 1.14 gust		110 mph + 1.14 gust	
Max EPA	Max Wt.	Max EPA	Max Wt.	Max EPA	Max Wt.

Ref. Item No.	Base Pole Number	Nominal Pole Height	Nominal Shaft Size & Wall Thickness	EPA Vertical Offset from Top of Pole	NON-AASHTO Rating						Bolt Circle Dia.	Anchor Bolt Size
					Max EPA	Max Wt.	Max EPA	Max Wt.	Max EPA	Max Wt.		
1	SSS1044C	10	4.0 Square x 11 Ga.	0"	30.5	763	23.5	588	18.5	463	8.50	.75 x 17 + 3
				30"	23.0	575	18.0	450	14.2	355		
1	SSS1244C	12	4.0 Square x 11 Ga.	0"	23.5	588	18.0	450	13.5	338	8.50	.75 x 17 + 3
				30"	19.1	478	14.5	363	11.0	275		
1	SSS1444C	14	4.0 Square x 11 Ga.	0"	19.9	498	15.0	375	11.5	288	8.50	.75 x 17 + 3
				30"	15.0	375	11.0	275	8.5	213		
1	SSS1644C	16	4.0 Square x 11 Ga.	0"	14.0	350	9.5	238	8.9	223	8.50	.75 x 17 + 3
				30"	11.5	288	8.0	200	7.1	178		
1	SSS1844C	18	4.0 Square x 11 Ga.	0"	12.0	300	8.5	213	5.5	138	8.50	.75 x 17 + 3
				30"	10.0	250	7.0	175	4.5	113		
1	SSS2044C	20	4.0 Square x 11 Ga.	0"	9.6	240	6.7	167	4.5	150	8.50	.75 x 17 + 3
				30"	8.1	203	5.6	140	3.7	93		
2	SSS2044G	20	4.0 Square x 7 Ga.	0"	16.9	423	12.5	313	9.0	225	8.50	.75 x 17 + 3
				30"	14.4	360	10.5	263	7.5	188		
3	SSS2055C	20	5.0 Square x 11 Ga.	0"	17.7	443	12.7	343	9.4	235	11.00	.75 x 17 + 3
				30"	14.0	373	10.9	273	8.0	200		
3	SSS2055G	20	5.0 Square x 7 Ga.	0"	28.1	703	21.4	535	16.2	405	11.00	.75 x 17 + 3
				30"	23.0	575	17.4	435	13.2	330		
1	SSS2544C	25	4.0 Square x 11 Ga.	0"	4.8	150	2.6	100	1.0	50	8.50	.75 x 17 + 3
				30"	4.3	108	2.4	60	na	na		
2	SSS2544G	25	4.0 Square x 7 Ga.	0"	10.5	263	7.0	175	4.5	113	8.50	.75 x 17 + 3
				30"	9.0	225	6.0	150	4.0	100		
3	SSS2555C	25	5.0 Square x 11 Ga.	0"	9.8	245	6.3	157	3.7	150	11.00	.75 x 17 + 3
				30"	8.8	220	5.6	140	3.4	85		
3	SSS2555G	25	5.0 Square x 7 Ga.	0"	18.5	463	13.3	333	9.5	238	11.00	.75 x 17 + 3
				30"	15.6	390	11.3	283	8.0	200		
2	SSS3044G	30	4.0 Square x 7 Ga.	0"	6.0	150	3.5	88	1.5	38	8.50	.75 x 17 + 3
				30"	5.5	138	3.0	75	1.0	25		
3	SSS3055C	30	5.0 Square x 11 Ga.	0"	4.7	140	2.0	50	na	na	11.00	.75 x 17 + 3
				30"	4.4	110	1.6	40	na	na		
4	SSS3055G	30	5.0 Square x 7 Ga.	0"	10.7	267	6.7	167	3.9	100	11.00	1.00 x 36 + 4
				30"	9.9	248	6.4	160	3.6	90		
5	SSS3066G	30	6.0 Square x 7 Ga.	0"	19.0	475	13.2	330	9.0	225	12.00	1.00 x 36 + 4
				30"	17.6	440	12.2	305	8.3	208		
4	SSS3555G	35	5.0 Square x 7 Ga.	0"	5.9	150	2.5	100	na	na	11.00	1.00 x 36 + 4
				30"	5.6	140	2.4	60	na	na		
5	SSS3566G	35	6.0 Square x 7 Ga.	0"	12.4	310	7.6	190	4.2	105	12.00	1.00 x 36 + 4
				30"	11.9	298	7.8	183	4.0	100		
6	SSS3966G	39	6.0 Square x 7 Ga.	0"	8.0	200	3.8	95	na	na	12.00	1.00 x 36 + 4
				30"	7.6	190	3.5	90	na	na		



**BASE DETAIL**

Item No.	Bolt Circle Dia.	Min. Base Size "D"	Base Thk. "T"	Bolt Projection	Anchor Bolt Set	Bolt Circle Template
1	8.50	8.00	0.75	3.25 - 3.75	AB-26-4	TMP-40
2	8.50	8.00	0.88	3.38 - 3.88	AB-26-4	TMP-40
3	11.00	11.00	1.00	3.50 - 4.00	AB-26-4	TMP-45
4	11.00	11.00	1.00	4.00 - 4.50	AB-27-4	TMP-45
5	12.00	12.50	1.00	4.00 - 4.50	AB-27-4	TMP-47
6	12.00	12.00	1.00	4.00 - 4.50	AB-27-4	TMP-47