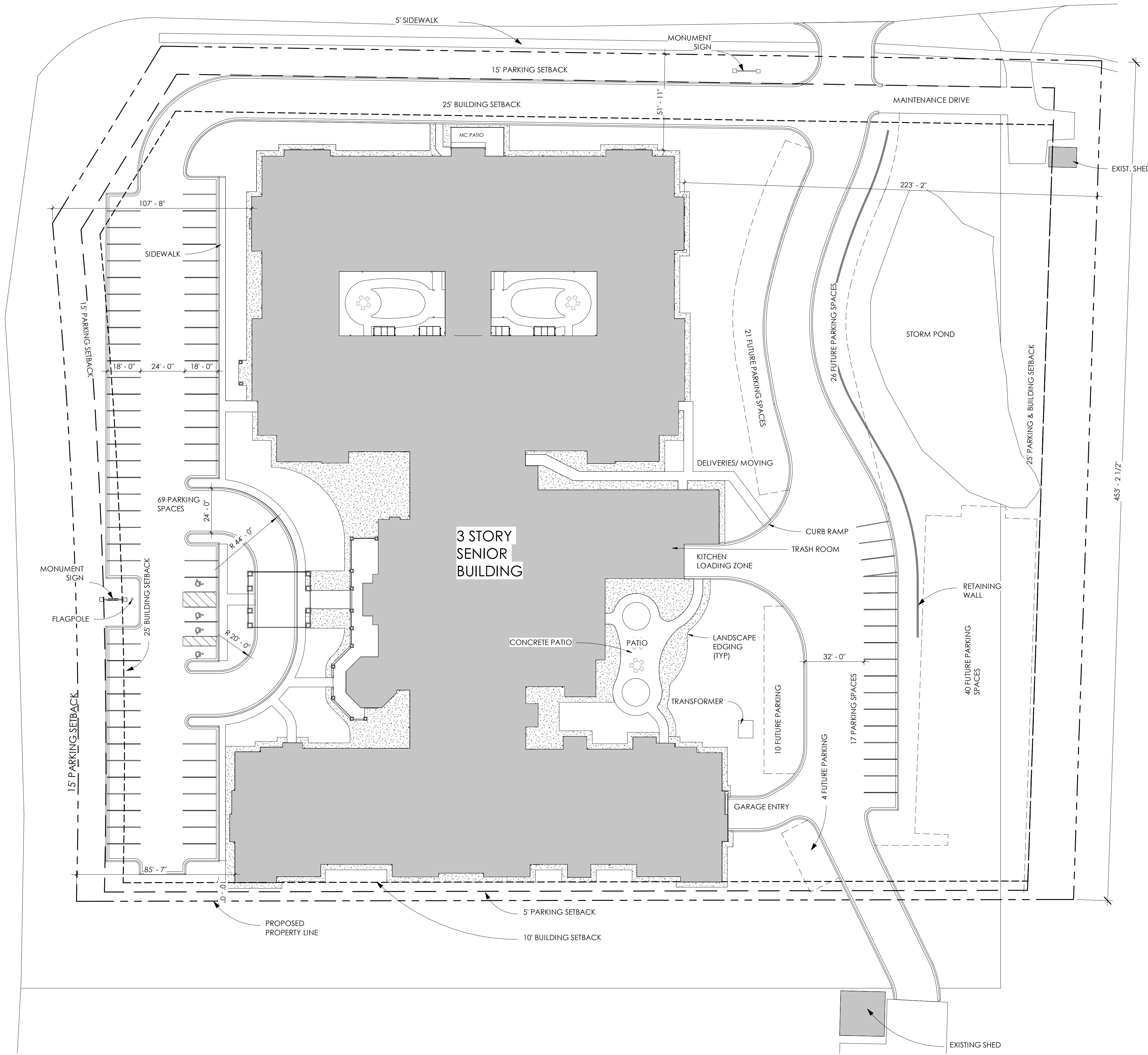


EAST BROADWAY

WI HIGHWAY 164  
WI HIGHWAY 59  
LES PAUL PARKWAY



**PARKING SUMMARY**

**PARKING SPACES REQUIRED:**  
MEMORY CARE:  
1 SPACE PER 3 BEDS: 47/3 = 16 SPACES  
1 SPACE PER EMPLOYEE: 8 SPACES

ASSISTED LIVING:  
2 SPACES PER UNIT: 94X2 = 198 SPACES  
1/10 SPACE PER UNIT: 94/10 = 10 SPACES  
TOTAL 222 SPACES

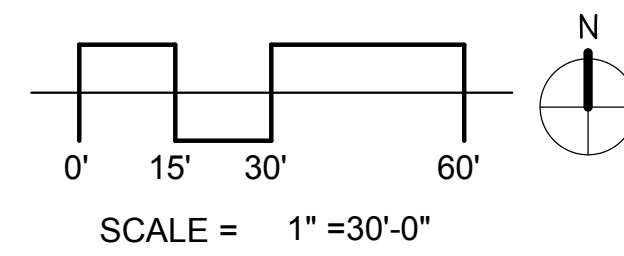
50% REQUIRED TO BE PROVIDED = 111 SPACES

**PARKING SPACES PROVIDED:**  
SITE 86 SPACES  
GARAGE 35 SPACES  
TOTAL 121 SPACES  
PROOF OF PARKING 101 SPACES  
TOTAL 222 SPACES

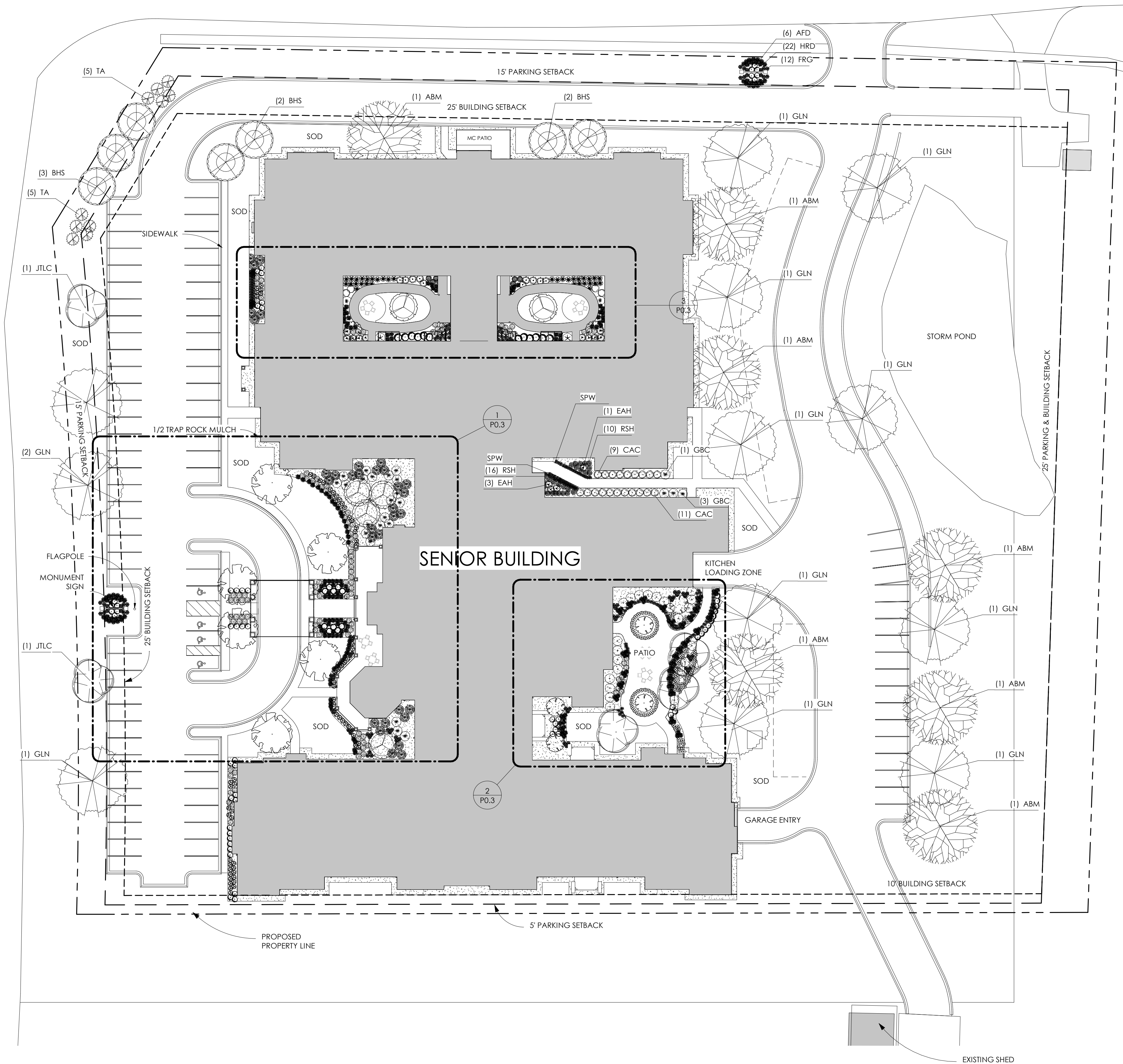


**2 MONUMENT SIGN ELEVATION**  
SCALE 1/2" = 1'-0"

**1 SITE PLAN**  
SCALE 1" = 30'-0"



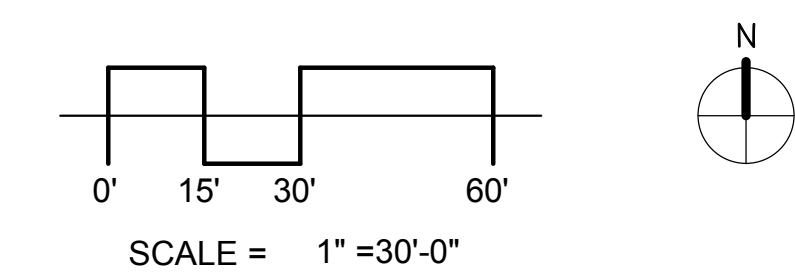
EAST BROADWAY



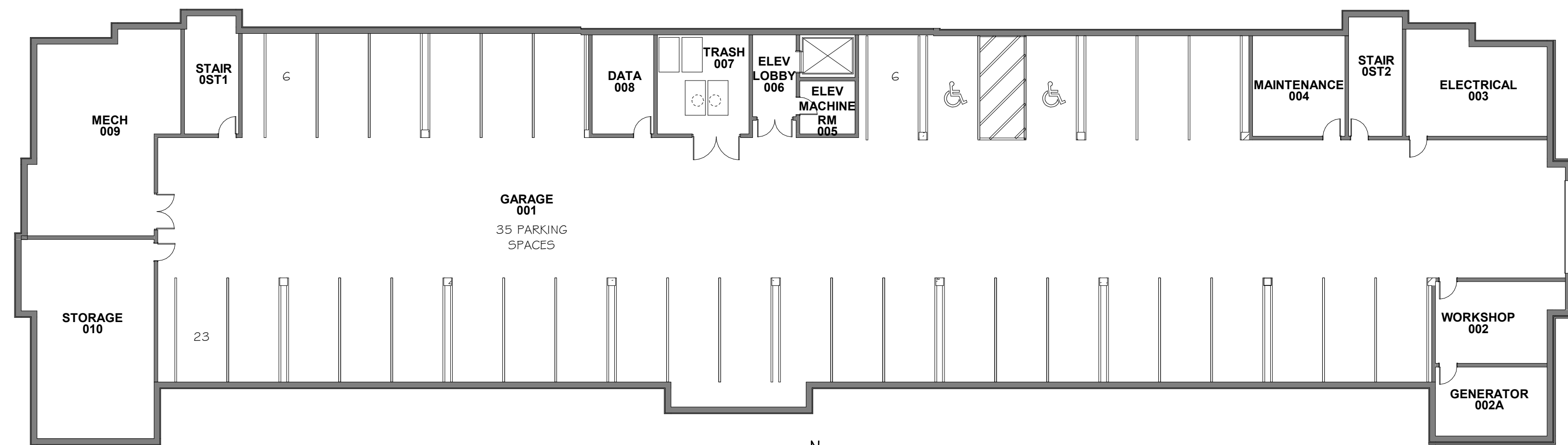
Planting Schedule				
ID	Count	Common Name	Botanical Name	Size
<b>1. Deciduous Tree</b>				
ABM	7	Autumn Blaze Maple	Acer x freemanii 'Jeffersred'	3" Caliper Ball and Burlap
DKLT	4	Dwarf Korean Lilac	Syringa meyeri 'Palibin'	#10 Container
GLN	12	Greenspire Linden	Tilia cordata 'Greenspire'	3" Caliper Ball and Burlap
JTLC	5	Japanese Tree Lilac	Syringa reticulata	2" Caliper Ball and Burlap
NTV	7	Nannyberry Tree Viburnum	Viburnum lentago	2" Caliper Ball and Burlap
PDW	6	Pagoda Dogwood	Cornus alternifolia	6" Tall Ball and Burlap
PRC	6	Prairiefire Crabapple(PFC)	Malus x 'Prairiefire'	2.0" Caliper Ball and Burlap
<b>2. Evergreen Tree</b>				
BHS	7	Black Hills Spruce	Picea glauca 'Densata'	6" Tall Ball and Burlap
TA	10	Techny Arborvitae	Thuja occidentalis 'Techny'	8" Tall Ball and Burlap
<b>3. Evergreen Tree</b>				
CLB	10	Chicago Land Green Boxwood	Buxus 'Glencoe'	8" Tall Ball and Burlap
<b>3. Shrub</b>				
AHD	33	Annabelle Hydrangea	Hydrangea arborescens 'Annabelle'	#5 Container
AFD	60	Arctic Fire Dogwood	Cornus stolonifera 'Farrow'	#5 Container
DSP	12	Dakota Sunspot Potentilla	Potentilla fruticosa 'Dakota Sunspot'	#5 Container
DBH	4	Dwarf Bush Honeysuckle	Diervilla lonicera	#5 Container
DKL	24	Dwarf Korean Lilac	Syringa meyeri 'Palibin'	#5 Container
GBC	27	Glossy Black Chokeberry	Aronia melanocarpa elata	#5 Container
<b>4. Perennial</b>				
BAH	10	Blue Angel Hosta	Hosta 'Blue Angel'	#1 Container
CF	34	Cinnamon Fern	Osmunda cinnamomea	#1 Container
CAC	20	Compact American Cranberrybush	Viburnum trilobum 'Bailey Compact'	#5 Container
EAH	14	Earth Angel Hosta	Hosta 'Earth Angel'	#1 Container
FRG	78	Feather Reed Grass	Calamagrostis x acutiflora 'Karl Foerster'	#5 Container
GSH	7	Gold Standard Hosta	Hosta 'Gold Standard'	#1 Container
HRD	229	Happy Returns Daylily	Hemerocallis 'Happy Returns'	#1 Container
FRG	24	Karl Foerster Feather Reed Grass	Calamagrostis x acutiflora 'Karl Foerster'	#5 Container
NWL	107	Nepeta Walkers Low	Nepeta x faassenii 'Walker's Low'	#1 Container
PMD	32	Pardon Me Daylily	Hemerocallis 'Pardon Me'	#1 Container
PCF	70	Purple Coneflower	Echinacea purpurea	#1 Container
RSH	26	Regal Splendor Hosta	Hosta 'Regal Splendor'	#1 Container
SMN	104	Salvia May Night	Salvia x superba 'Mainnacht'	#1 Container
SPW	115	Spiderwort	Tradescantia x 'Sweet Kate'	#1 Container

WI HIGHWAY 164  
WI HIGHWAY 59  
LES PAUL PARKWAY

**1 LANDSCAPE PLAN**  
SCALE 1" = 30'-0"





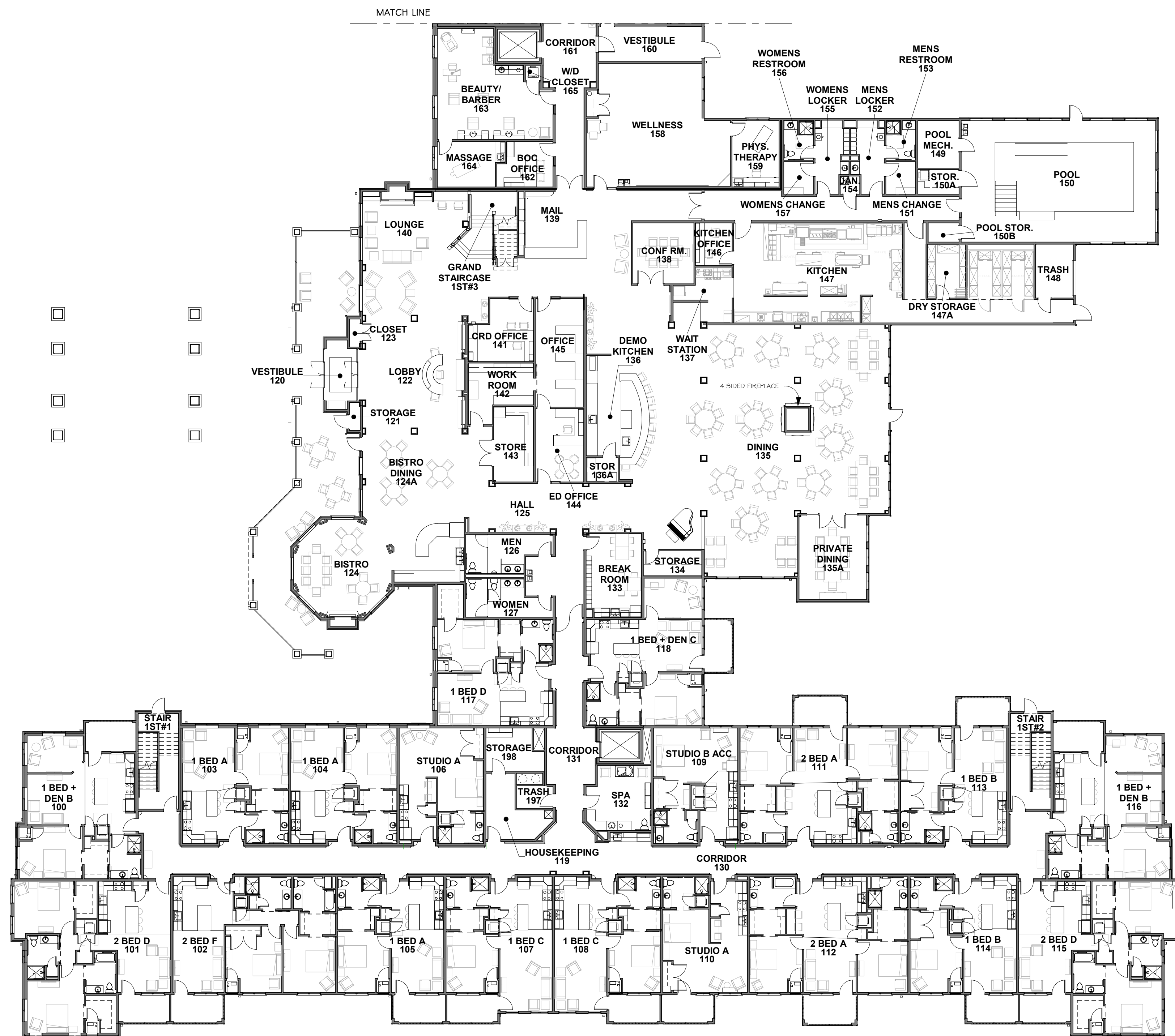


**1 GARAGE FLOOR PLAN**  
SCALE 1/16" = 1'-0"

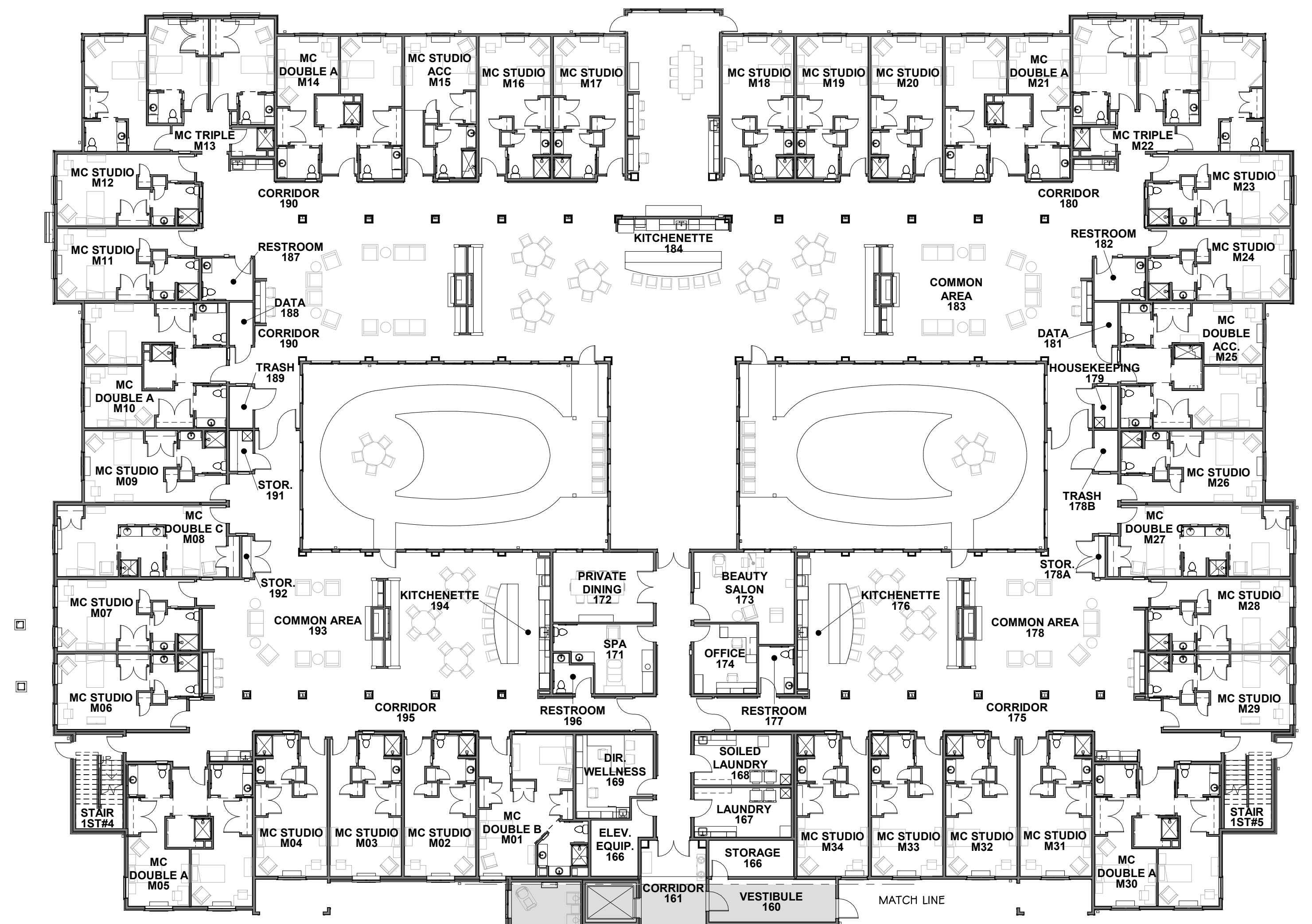
BUILDING AREA (Gross SF)	
Level	Area
GARAGE	17176 SF
1ST FLOOR	68954 SF
2ND FLOOR	44468 SF
3RD FLOOR	42122 SF
Grand total	172720 SF

UNIT MIX BY TYPE - MEMORY CARE		
-01 - MC STUDIO	23	68%
-02 - MC DOUBLE	9	26%
-03 - MC TRIPPLE	2	6%
Grand total	34	100%

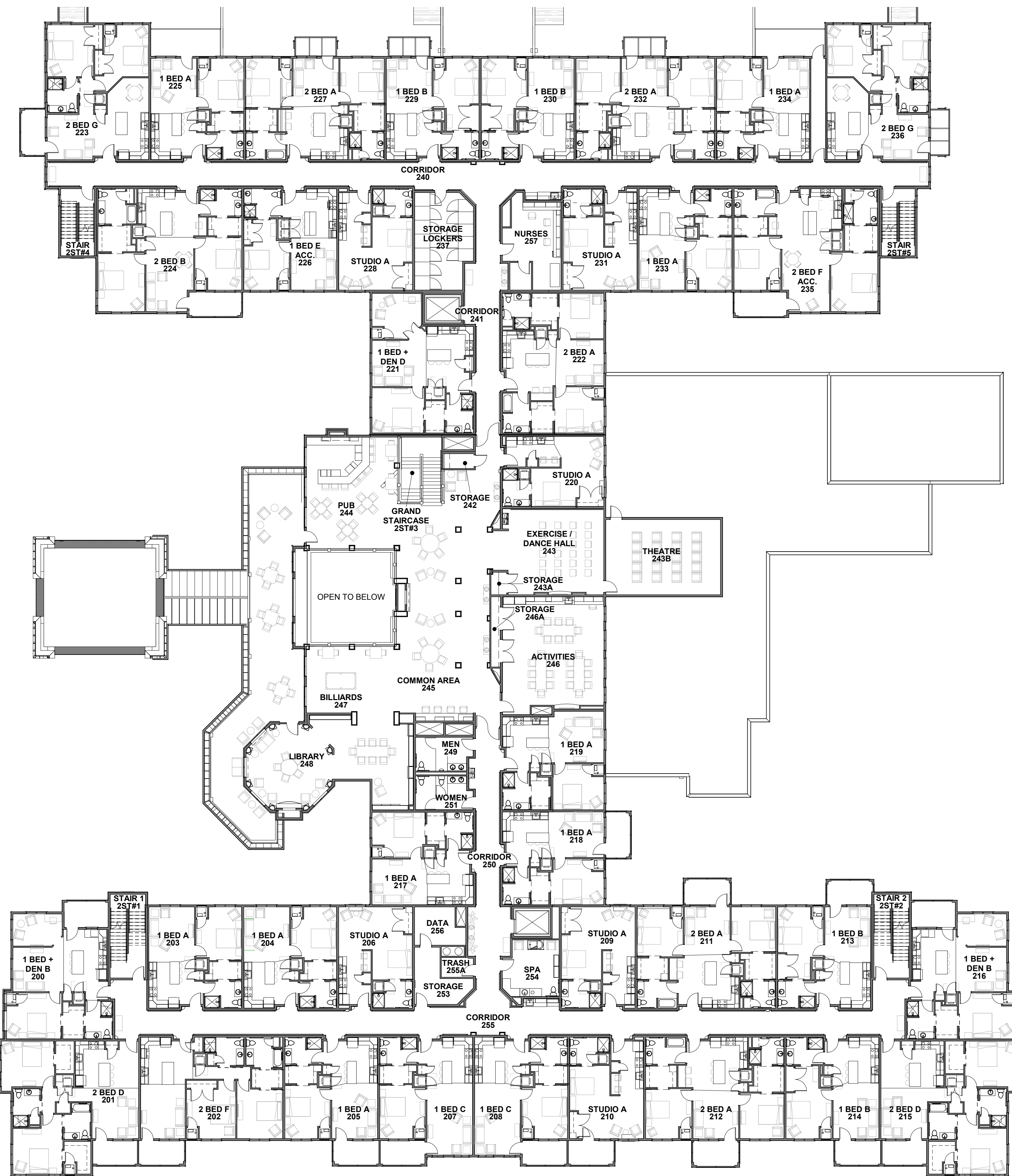
UNIT MIX BY TYPE - ASSISTED LIVING		
-04 - STUDIO	13	14%
1 BED	41	44%
1 BED + DEN	9	10%
2 BED	30	32%
2 BED + DEN	1	1%
Grand total	94	100%



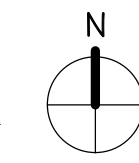
**2 PARTIAL 1ST FLOOR PLAN - ASSISTED LIVING**  
SCALE 1/16" = 1'-0"

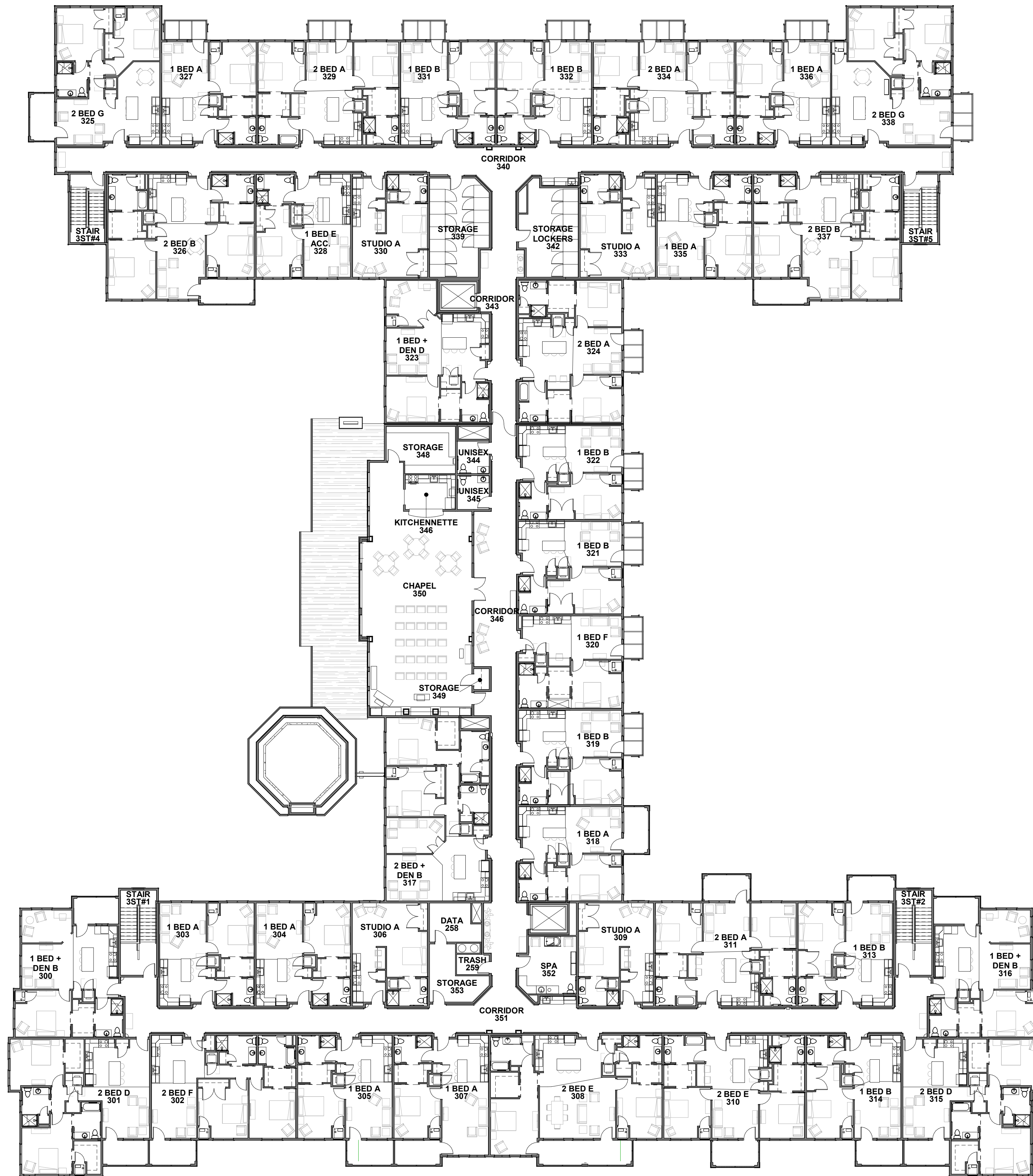


**3 PARTIAL 1ST FLOOR PLAN - MEMORY CARE**  
SCALE 1/16" = 1'-0"

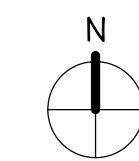


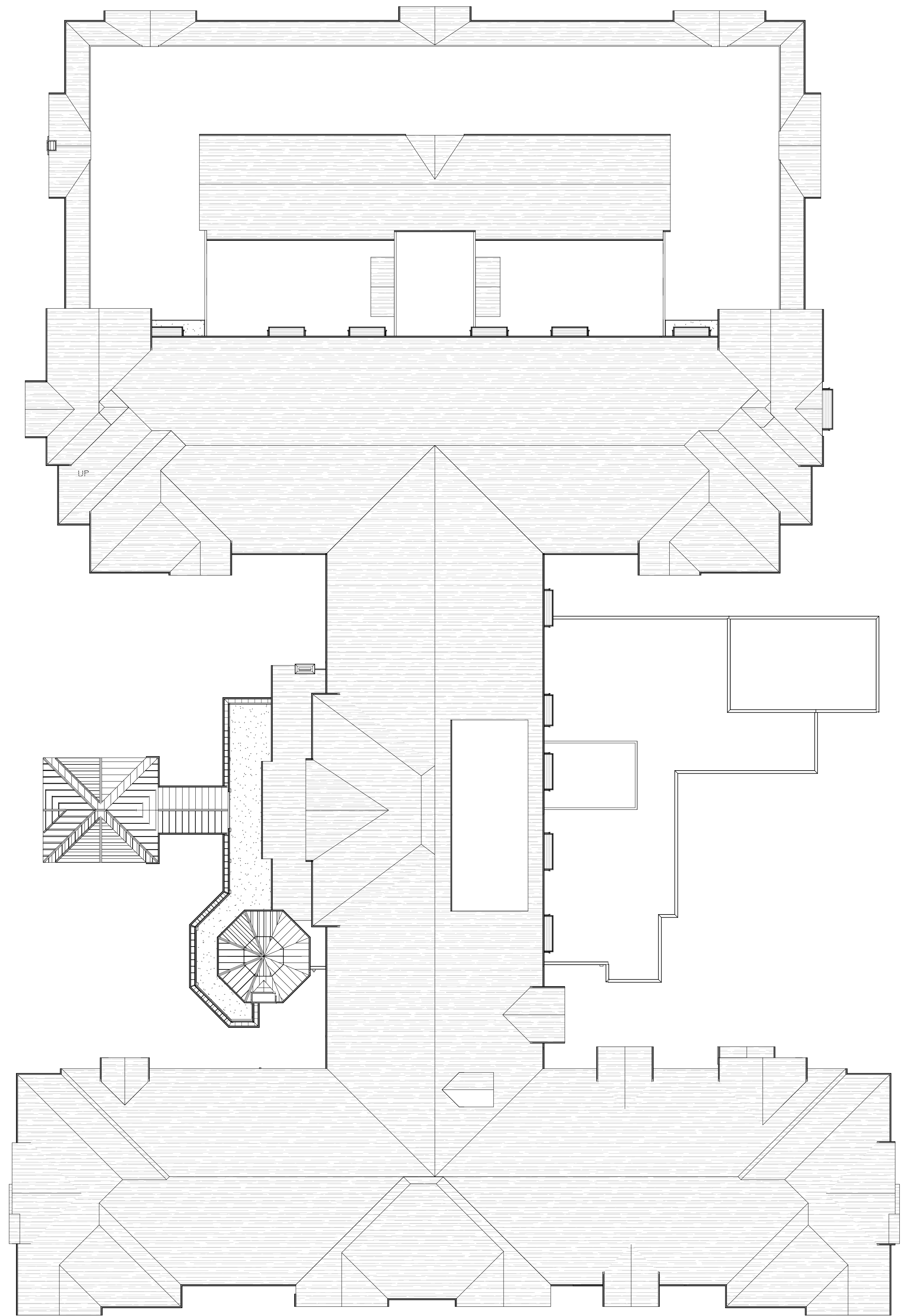
1 **2ND FLOOR**  
SCALE 1/16" = 1'-0"



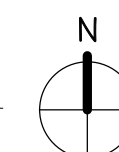


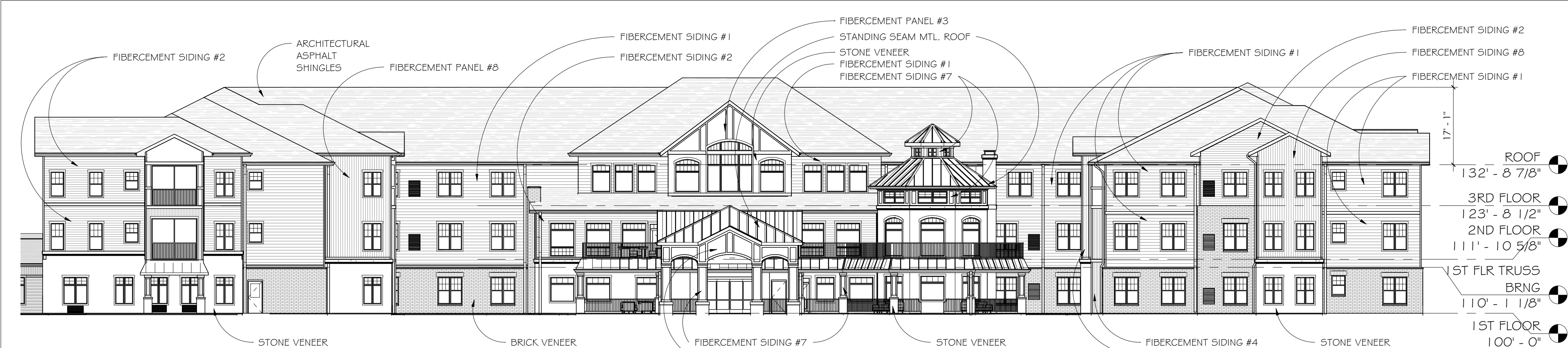
1 3RD FLOOR  
SCALE 1/16" = 1'-0"



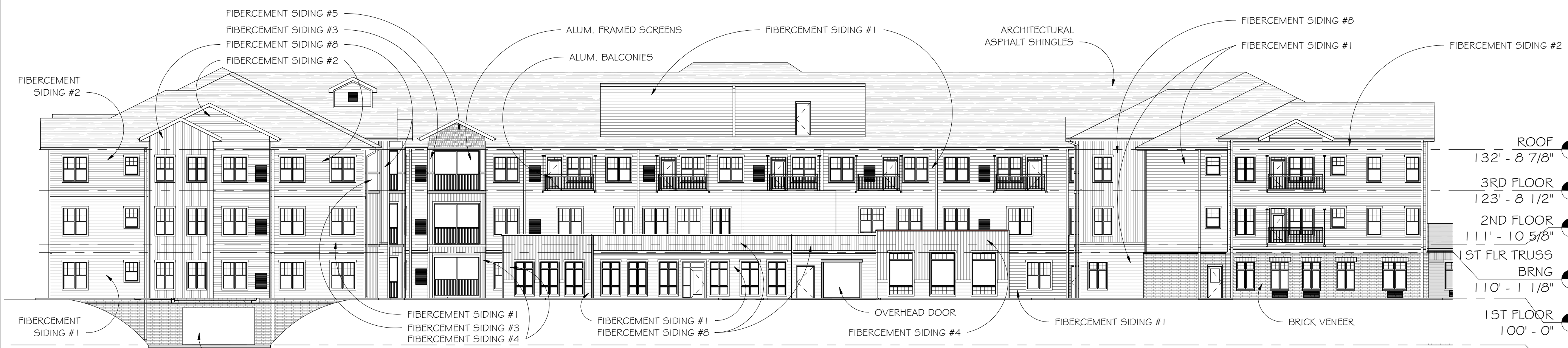


1 ROOF  
SCALE 1" = 20'-0"





**1 PARTIAL WEST ELEVATION - ASSISTED LIVING**  
SCALE 1/16" = 1'-0"



**2 PARTIAL EAST ELEVATION - ASSISTED LIVING**  
SCALE 1/16" = 1'-0"



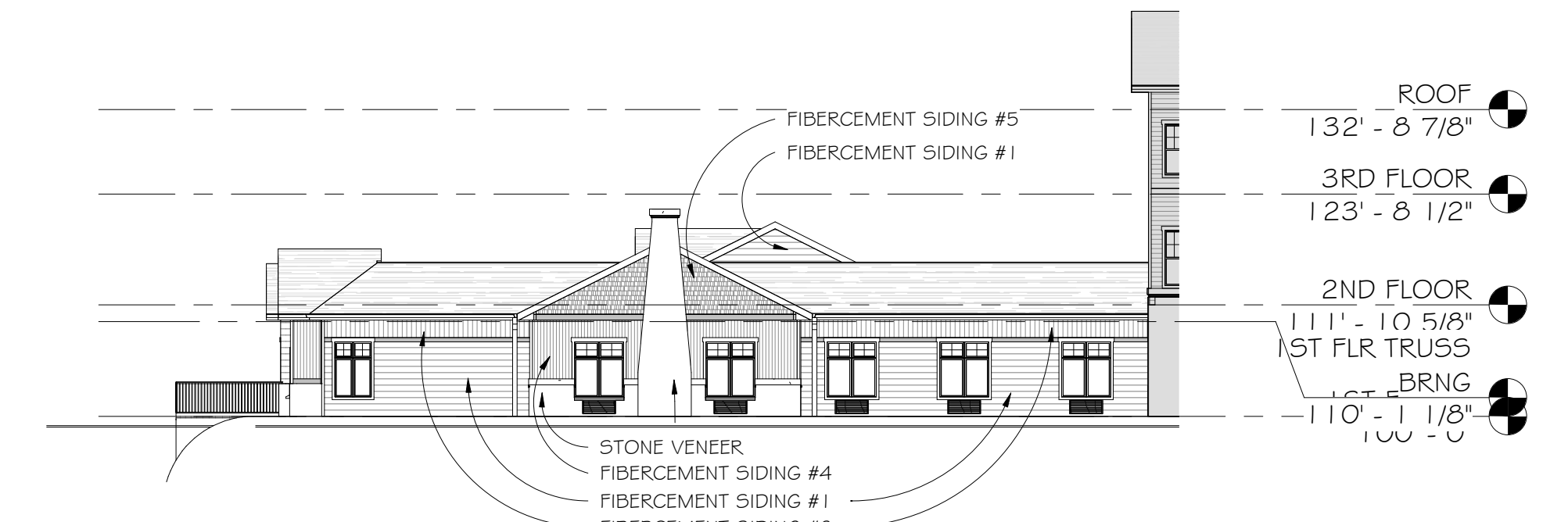
**3 SOUTH WING ELEVATION**  
SCALE 1/16" = 1'-0"



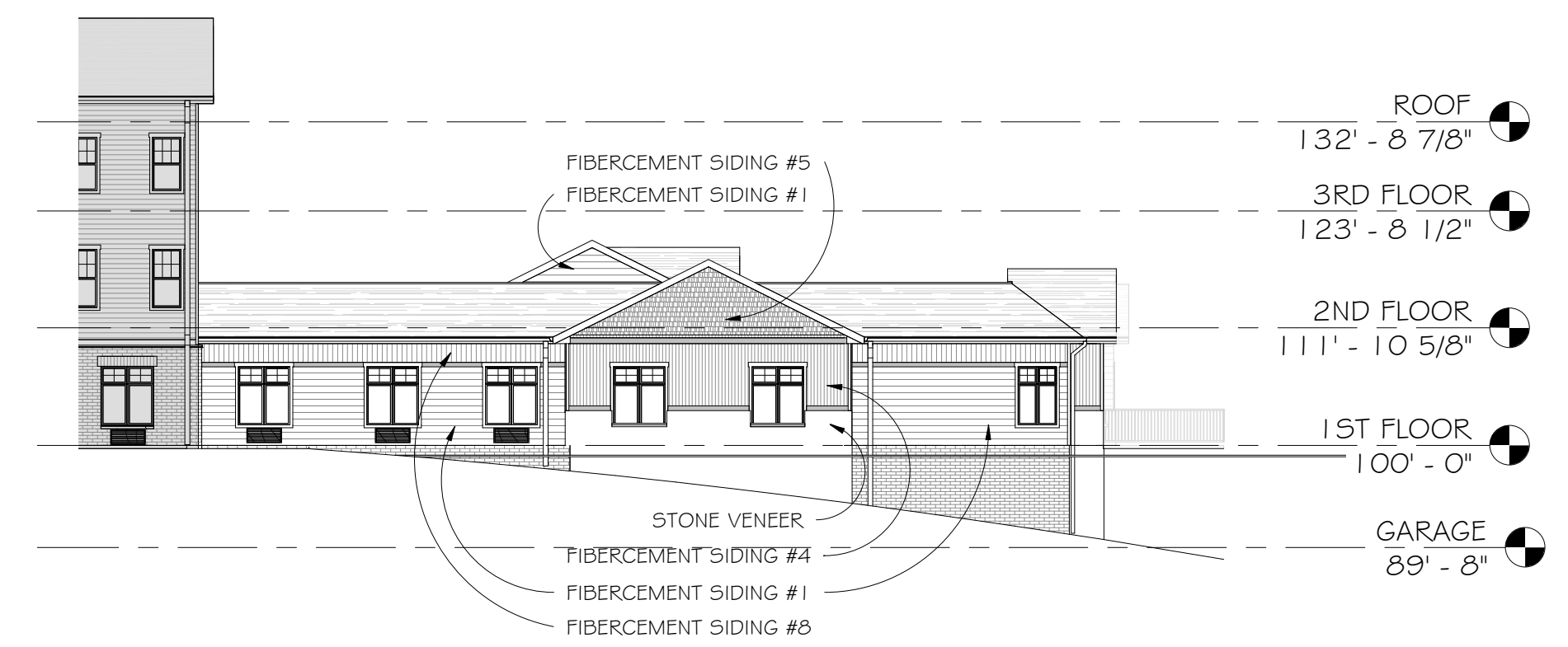
**5 NORTH ELEVATION - MEMORY CARE**  
SCALE 1/16" = 1'-0"

EXTERIOR FINISH SCHEDULE		
<b>BRICK #1:</b> MANUFACTURER: - HEBRON COLOR: - BRANDYWINE SIZE: - UTILITY MORTAR: - STANDARD	<b>FIBER CEMENT SIDING #3:</b> MANUFACTURER: - TYPE: FLAT PANEL PAINT: SHERWIN WILLIAMS - RED BARN - SW 7591 TRIM: 4" COMPOSITE VERTICALS	<b>FIBER CEMENT COMPOSITE TRIM:</b> MANUFACTURER: - TYPE: FLAT PANEL PAINT: JAMES HARDIE - NAVAJO BEIGE
<b>STONE:</b> TYPE: - CHILTON COLOR: - WEATHERED EDGE NATURAL STONE	<b>FIBER CEMENT SIDING #4:</b> MANUFACTURER: - TYPE: VERTICAL SIDING PAINT: SHERWIN WILLIAMS - RED BARN - SW 7591 TRIM: 2 1/2" COMPOSITE VERTICALS 12" O.C. @ PORCHES 16" O.C. ALL OTHER AREAS	<b>VINYL WINDOWS:</b> MANUFACTURER: - THERMOTECH COLOR: - TAN
<b>METAL SOFFIT &amp; FASCIA:</b> MANUFACTURER: - ROLLEX COLOR: - CANVAS	<b>FIBER CEMENT SIDING #5:</b> MANUFACTURER: - TYPE: SHAKE PANEL PAINT: SHERWIN WILLIAMS - RED BARN - SW 7591 TRIM: 4" COMPOSITE VERTICALS	<b>ALUMINUM DOORS &amp; WINDOWS:</b> MANUFACTURER: - COLOR: - CHAMPAGNE ANODIZED
<b>ALUMINUM DECK, RAILINGS AND SCREEN RAILING ASSEMBLIES:</b> PICKET RAIL: - SQUARE COLOR: - BRONZE	<b>FIBER CEMENT SIDING #6:</b> MANUFACTURER: - TYPE: LAP SIDING PAINT: SHERWIN WILLIAMS - RED BARN - SW 7591 TRIM: 4" COMPOSITE VERTICALS	<b>STANDING SEAM ROOF:</b> MANUFACTURER: - UNACLAD TYPE: - UC-3 PAINT: - MANSARD BROWN
<b>LANDSCAPE BLOCK:</b> MANUFACTURER: - FINISH: - COLOR: -	<b>FIBER CEMENT SIDING #7:</b> MANUFACTURER: - TYPE: FLAT PANEL PAINT: JAMES HARDIE - NAVAJO BEIGE TRIM: 4" COMPOSITE VERTICALS	<b>ARCHITECTURAL PRECAST SILLS &amp; CAPS:</b> MANUFACTURER: - COLOR: - TBD
<b>FIBER CEMENT SIDING #1:</b> MANUFACTURER: - TYPE: LAP SIDING PAINT: JAMES HARDIE - KHAKI BROWN EXPOSURE: - 4" TRIM: 4" COMPOSITE VERTICALS	<b>FIBER CEMENT SIDING #8:</b> MANUFACTURER: - TYPE: 8" LAP SIDING PAINT: JAMES HARDIE - AUTUMN TAN EXPOSURE: - 8" TRIM: 4" COMPOSITE VERTICALS	<b>ARCHITECTURAL SHINGLE:</b> MANUFACTURER: - CERTANTEED TYPE: - LANDMARK COLOR: - WEATHERED WOOD

\*SEE PROJECT MANUAL FOR EQUAL MANUFACTURERS TO ABOVE REFERENCED PRODUCTS.



**4 PARTIAL WEST ELEVATION - MEMORY CARE**  
SCALE 1/16" = 1'-0"



**6 PARTIAL EAST ELEVATION - MEMORY CARE**  
SCALE 1/16" = 1'-0"