

F

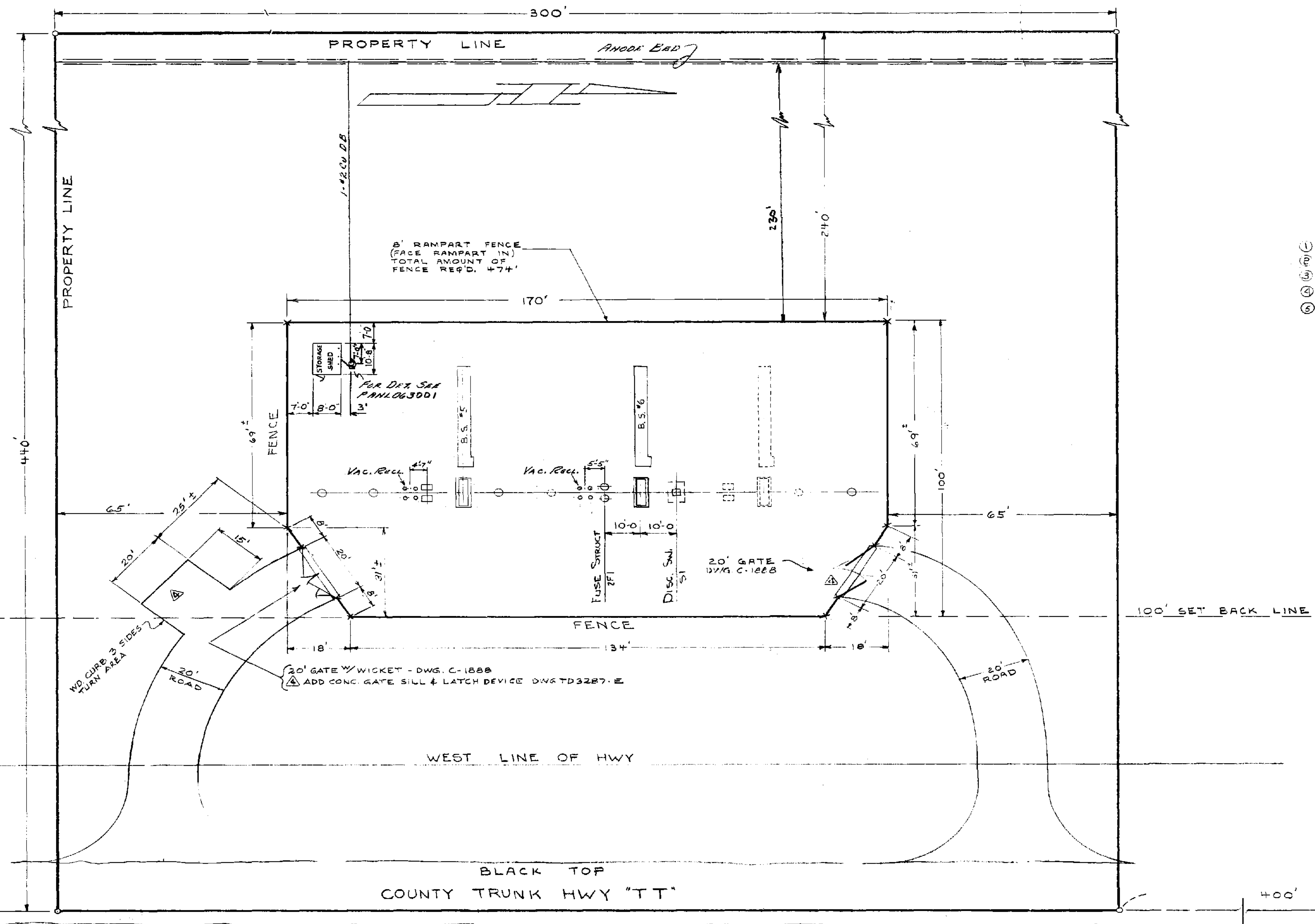
E

D

C

B

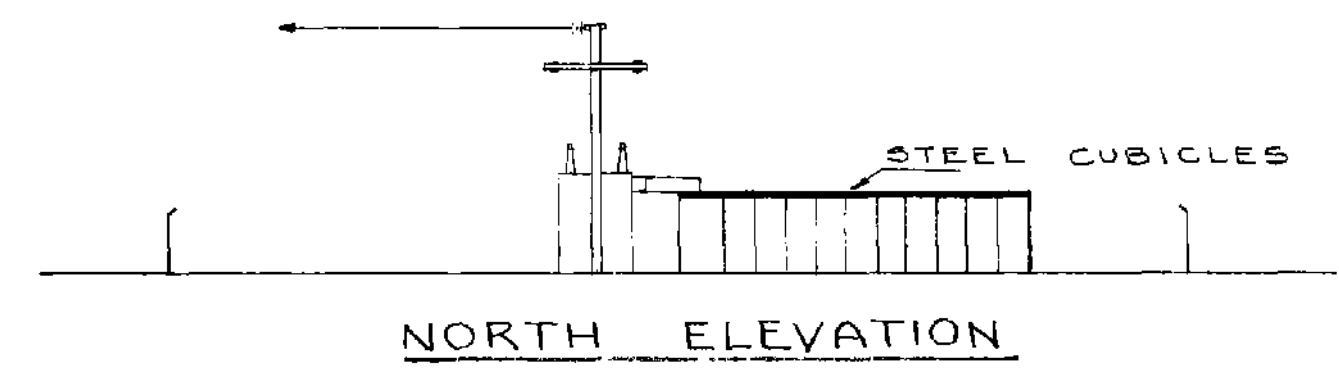
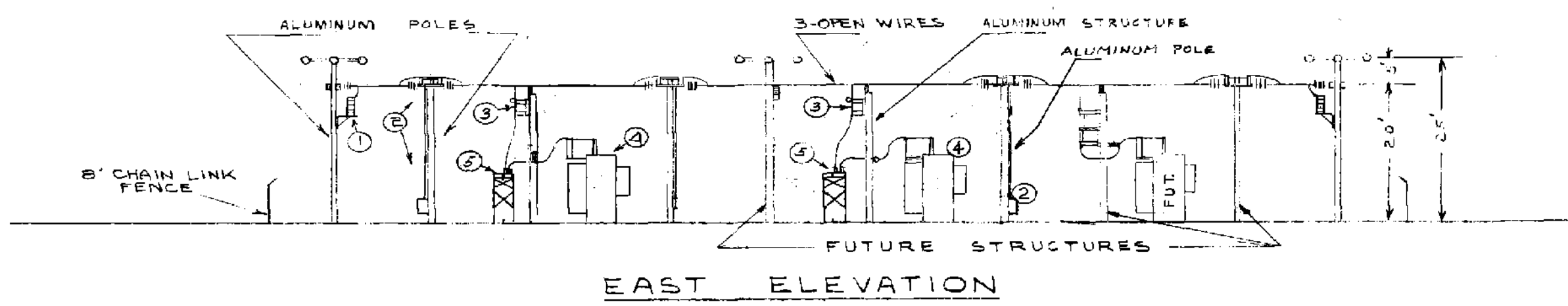
A



- LEGEND**
- ① POTENTIAL DEVICE
  - ② LOAD BREAK SWITCH WITH AUTOMATIC OPERATOR
  - ③ 26.4 KV, 800A DISCONNECT SWITCH
  - ④ TRANSFORMER, 2400/10500 KVA, 26.4/8.73 KV
  - ⑤ 27 KV, 800A VACUUM RECLOSER

REF. DWG. (GO ADDN)  
 TDS 4630-L - FUSE STRUCT FDN.  
 TDS 4638-D - DISC. SW. FDN.  
 TDS 4615-E - SWGR FDN.  
 TD 6732-D - TRANSF. FDN.  
 TDS 5431-F - STORAGE SHED FDN.

NE 1/4 OF THE NE 1/4 SECTION "6"  
 T-6-N R-16-E TOWN OF WAUKESHA  
 WAUKESHA COUNTY



© WISCONSIN ELECTRIC 1996

REV. NO.	DATE	REVISION DESCRIPTION	ACT	DRAWN	CHK'D	APPR'D	REV. NO.	DATE	REVISION DESCRIPTION	ACT	DRAWN	CHK'D	APPR'D	
							12	01-14-98	AS BUILT FIELD (08-06-97)		8051	DER	JAL	JL

LEVEL USAGE	CGS REF FILES	MICROFILM NO.
1 2 3 4 5 6 7 8 9 10 11 12 13 14 15 16 17 18 19 20 21 22 23 24 25 26 27 28 29 30 31 32 33 34 35 36 37 38 39 40 41 42 43 44 45 46 47 48 49 50 51 52 53 54 55 56 57 58 59 60 61 62 63		182374
		WISCONSIN ELECTRIC
		CGS NO. 71759C
		DWEW121PANL00000112

PROPERTY PLAN & ELEVATION  
 26.4 KV - 8.3/4.8 KV  
 WEWAUK SUBSTATION

WAS: TD-5437-F-S2