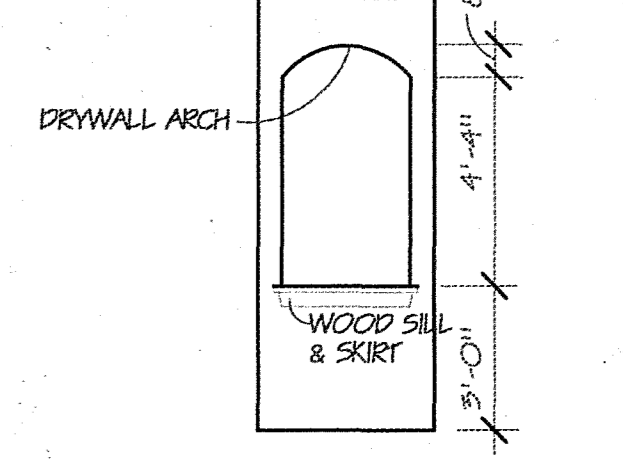
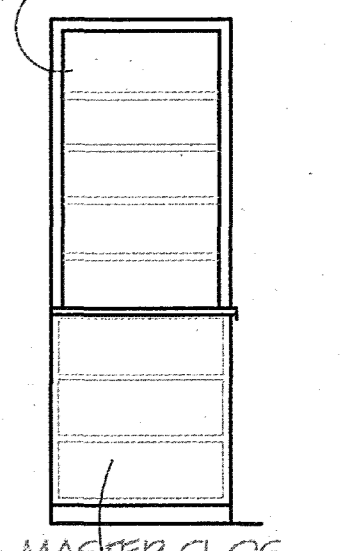


- NOTES:**
- 5/6" OPEN DIRECT VENT FIREPLACE
 - 5' FIBERGLASS TUB / SHOWER MODULE
 - ROOF TRUSSES @ 24" O.C.
 - FRONT FRAME TOWEL CABINET
 - 30" RANGE SPACE W/ MICRO. ABOVE
 - CERAMIC TILE SHOWER ON WALLS TO 7'-0" W/ METAL / GLASS DOOR
 - FIXED VELUX 504 SKYLIGHT W/ DRYWALL WINDOW WELL
 - 5/8" FIRECODE DRYWALL ON COMMON WALLS - RUN UP TO ROOF SHEATHING
 - ARCHED DRYWALL OPENING
 - POX OUT TRUSSES TO ALLOW FOR ADEQUATE INSL., POLY V.B., & 5/8" DRYWALL
 - 9'-0" HIGH CEILING
 - HEAD HEIGHT OF THESE WINDOW TO BE 8'-0" ABOVE FLOOR LINE
 - VOIDED WITH CHANGES
 - PROVIDE 4" HIGH STAT. TRANSOMS ABOVE TO MATCH WIDTH OF UNITS BELOW - HEAD HEIGHT OF TRANSOMS @ 12'-4" ABOVE FL. LINE
 - VOIDED WITH CHANGES
 - 5'-6" X 6" WHIRLPOOL TUB W/ CERAMIC TILE DECK, SKIRT, & 2-RON SPLASH
 - DROP CEILING
 - WHIRLPOOL MOTOR ACCESS PANEL - MIN. 24" WIDE
 - DRYWALL NICHE

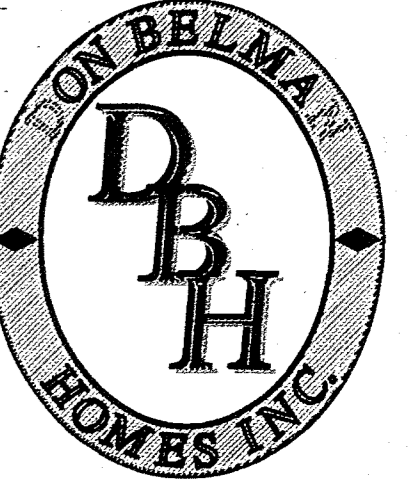


- DASHED LINES INDICATE DRYWALL LEDGE AT 10'-0" ABOVE FIRST FLOOR LINE
- STAT. TRANSOM UNITS ABOVE ENTRY 2941-2
- 10'-6" CEILING
- HEIGHT OF STAT. 2929 TRANSOM @ 12'-4" ABOVE FL. LINE
- BIRCH BACK AND INT. W/ 4 ADJ. SHELVES 15" DEEP LIPPER



WINDOWS NOTE:
WINDOWS HEAD HEIGHT TO BE 8'-0" ABOVE FIRST FLOOR LINE UNLESS OTHERWISE NOTED

- ELECTRICAL NOTES:**
- EXHAUST FAN
 - FLOURESCENT LIGHT
 - SMOKE DETECTOR (HARDWIRED)
 - DIMMER SWITCH
 - DIRECTIONAL EYEBALL LIGHT
 - WALL SCONCE



1407 E. SUNSET DR., SUITE 200
WALKESHA, WISCONSIN 53099
PHONE: (262) 544-4648
FAX: (262) 549-8980
WWW.DONBELMANHOMES.COM

© COPYRIGHT 2007
 THESE PLANS ARE THE PROPERTY OF DON BELMAN HOMES INC. AND MAY NOT BE USED WITHOUT THE EXPRESS WRITTEN PERMISSION OF DON BELMAN HOMES, INC. ALL RIGHTS ARE RESERVED AND PROTECTED BY THE COPYRIGHT LAWS OF THE UNITED STATES OF AMERICA. ©

UNIT 1
1,803 - SQ. FT. LIVING SPACE

FIRST FLOOR PLAN
SCALE 1/4" = 1' - 0"
* 9'-0" FIRST FLOOR *

UNIT 2
1,779 - SQ. FT. LIVING SPACE