

Waukesha City Hall Waukesha, WI



1241 John Q Hammons Dr., Ste. 503 Madison, WI 53717 608.829.3701 bwbr.com

Consultants RING & DUCHATEAU 17400 West Capitol Drive - Brookfield, WI 53045 Phone: 414.778.1700 / Fax: 414.778.2360 / r-d@ringdu.com RD Project Number: 21802100

This document may be an electronic file or may be printed from an electronic file provided to the user. It is the sole responsibility of the user to ensure that the content and quality is consistent with the content and quality of the original documents on file at BWBR.

I hereby certify that this plan, specification or report was prepared by me or under my direct supervision and that I am duly Licensed Registered Architect under the laws of the State of Wisconsin.

Name: Date: Issue Date: Lic./Reg. No. Issued For:

Table with columns: Item, Date

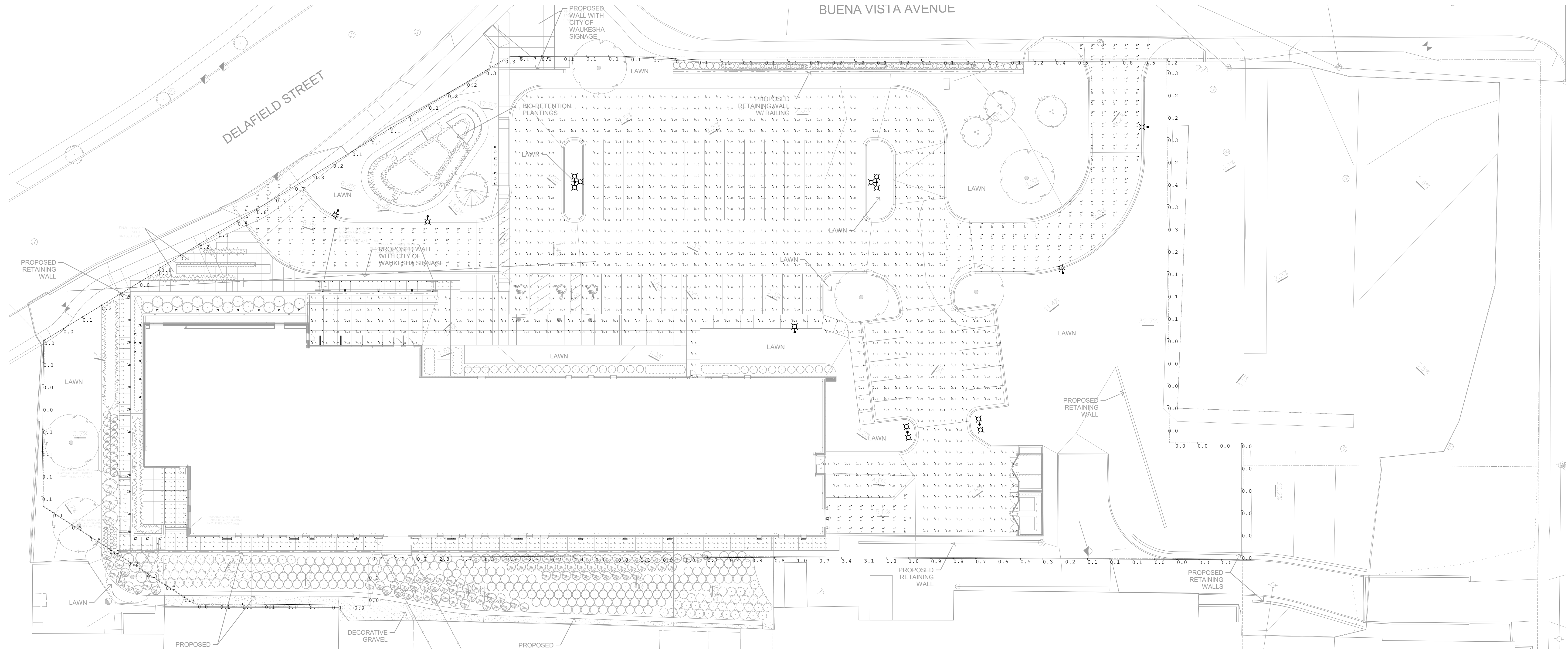
NOT FOR CONSTRUCTION FOR REFERENCE ONLY

This sheet may be a Reduced Copy. The bar above is 1" long on a Full Size Sheet. Drawing Scales apply to Full Size Sheets.

Comm. No. 3207123.00 Drawn PCW

Sheet Title CITY SUBMITTAL - PHOTOMETRICS

Sheet No. 101



1 SITE PLAN - ELECTRICAL CITY SUBMITTAL PHOTOMETRICS 101 1"=20'-0"

Table with columns: FIXT TYPE, LIGHT SOURCE, FIXT QTY, LUMEN OUTPUT, COLOR TEMP.(K), WATTS, VOLT, DIST TYPE, ORIEN-TATION, ARM CONFIG, ARM LENGTH, ARM HEIGHT, POLE SHAPE, POLE WIDTH, POLE MATL, POLE FINISH, POLE COLOR, OPTIONS, MANUFACTURER, CATALOG SERIES, BASE DETAILS, SEE NOTES

LIGHTING POLE AND FIXTURE SCHEDULE GENERAL NOTES:

- 1. SITE POLE IS A CITY STANDARD. ALTERNATE ARE NOT ACCEPTED. 2. PROVIDE A FUSE AT EACH NON-GROUNDING CONDUCTOR AT EACH LUMINAIRE POLE BASE.

LIGHTING POLE AND FIXTURE SCHEDULE NOTES:

- 1. REFER TO PLANS FOR ORIENTATION OF POLE.

Table with columns: Label, CalcType, Units, Avg, Max, Min, Avg/Min, Max/Min