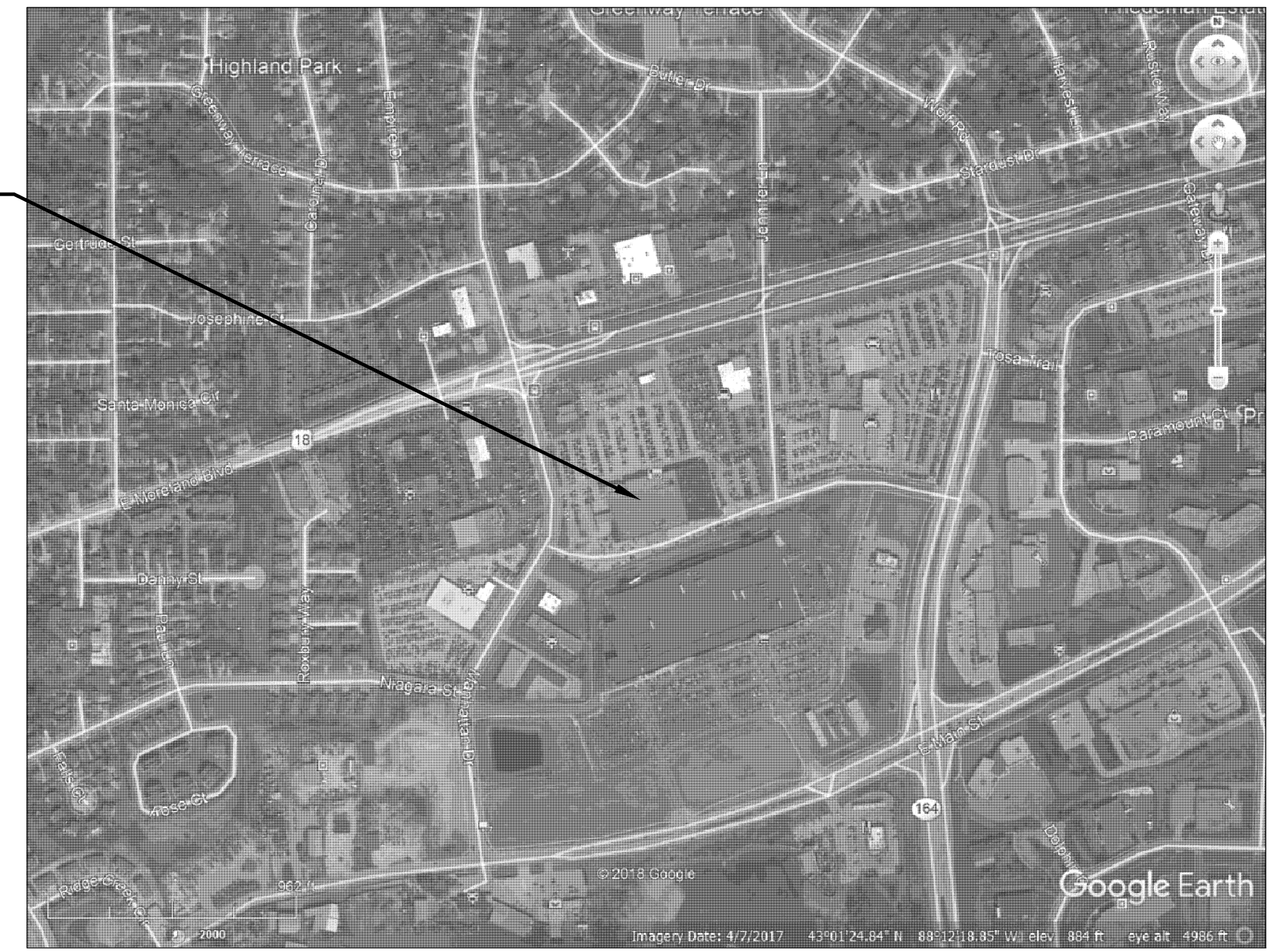
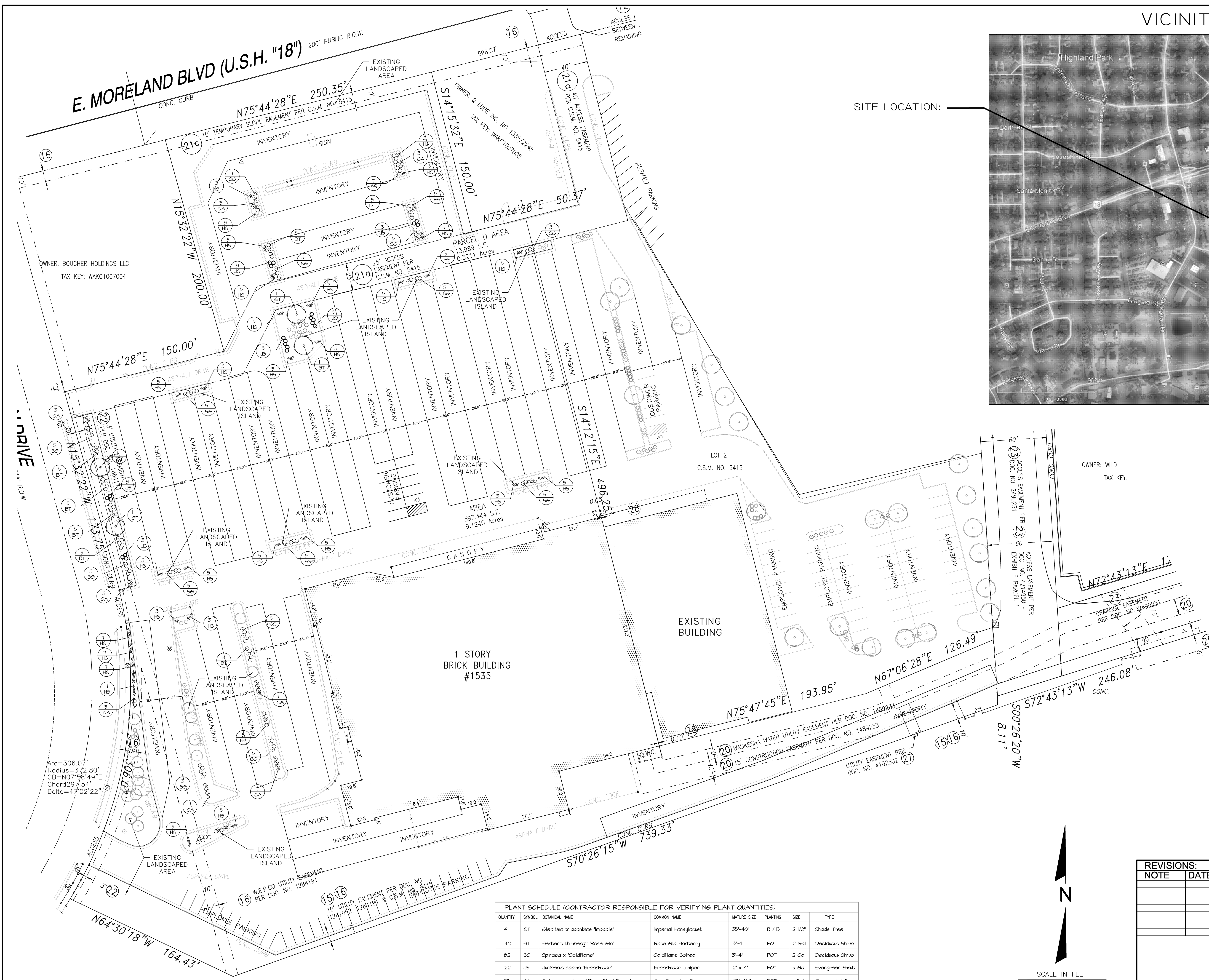


VICINITY MAP

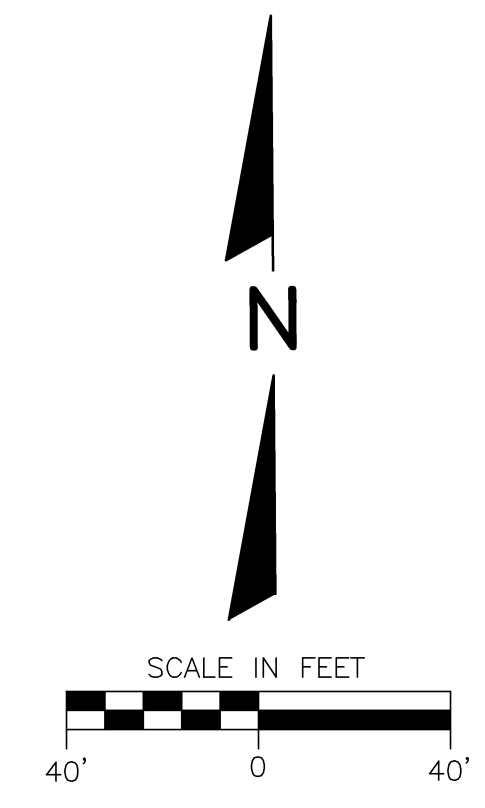


SITE LOCATION:



PLANT SCHEDULE (CONTRACTOR RESPONSIBLE FOR VERIFYING PLANT QUANTITIES)

| QUANTITY | SYMBOL | BOTANICAL NAME | COMMON NAME | MATURE SIZE | PLANTING | SIZE | TYPE |
|----------|--------|------------------------------------------|----------------------|-------------|----------|--------|------------------|
| 4 | GT | Gleditsia triacanthos 'Impicola' | Imperial Honeylocust | 35'-40' | B / B | 2 1/2' | Shade Tree |
| 40 | BT | Berberis thunbergii 'Rose Glo' | Rose Glo Barberry | 3'-4' | POT | 2 Gal | Deciduous Shrub |
| 22 | SG | Spiraea x 'Goldflame' | Goldflame Spiraea | 3'-4' | POT | 2 Gal | Deciduous Shrub |
| 82 | JS | Juniperus sabinia 'Broadmoor' | Broadmoor Juniper | 2' x 4' | POT | 5 Gal | Evergreen Shrub |
| 51 | CA | Calamagrostis acutiflora 'Karl Foerster' | Karl Foerster Grass | 42"-48" | POT | 1 Gal | Ornamental Grass |
| 148 | HS | Hemerocallis x 'Stella D'oro' | Stella D'oro Daylily | 18"-24" | POT | 1 Gal | Perennial |



| | | | | | |
|--------------------------------------|------|-------------------------------------------------------------------------------------------------------------------------------------------------------|-------------------------------------------------------------|-----------------------------------------------------------------------------------------------------------------------------------------------------------------------------------------------------------------------------------------------------------------------------------------------------|--|
| REVISIONS: | | TDI ASSOCIATES, INC All Rights Reserved 18 W2250 JOHNSON DRIVE, SUITE B4 WAUKESHA, WISCONSIN 53186 PHONE 262-409-2530 FAX 262-409-2531 | TDI ASSOCIATES, INC. ARCHITECTURE, ENGINEERING, PLANNING | OWNERSHIP OF DOCUMENTS | |
| NOTE | DATE | | | This document and the ideas and design incorporated herein, as an instrument of professional services, is the sole property of TDI Associates, Inc., and is not to be used in whole or in part for any other project or purpose without the expressed written authorization of TDI Associates, Inc. | |
| CITY OF WAUKESHA, WI PROJECT NAME | | | SCALE: 1"= 40'-0" JOB NO: 16-358.000 DATE: 03-26-18 | | |
| SITE LANDSCAPE PLAN | | | DESIGNED BY: ROB DRAWN BY: ROB CHECKED BY: | | |
| APPROVED BY: | | | ENGINEER DATE SHEET L-1.0 | | |