

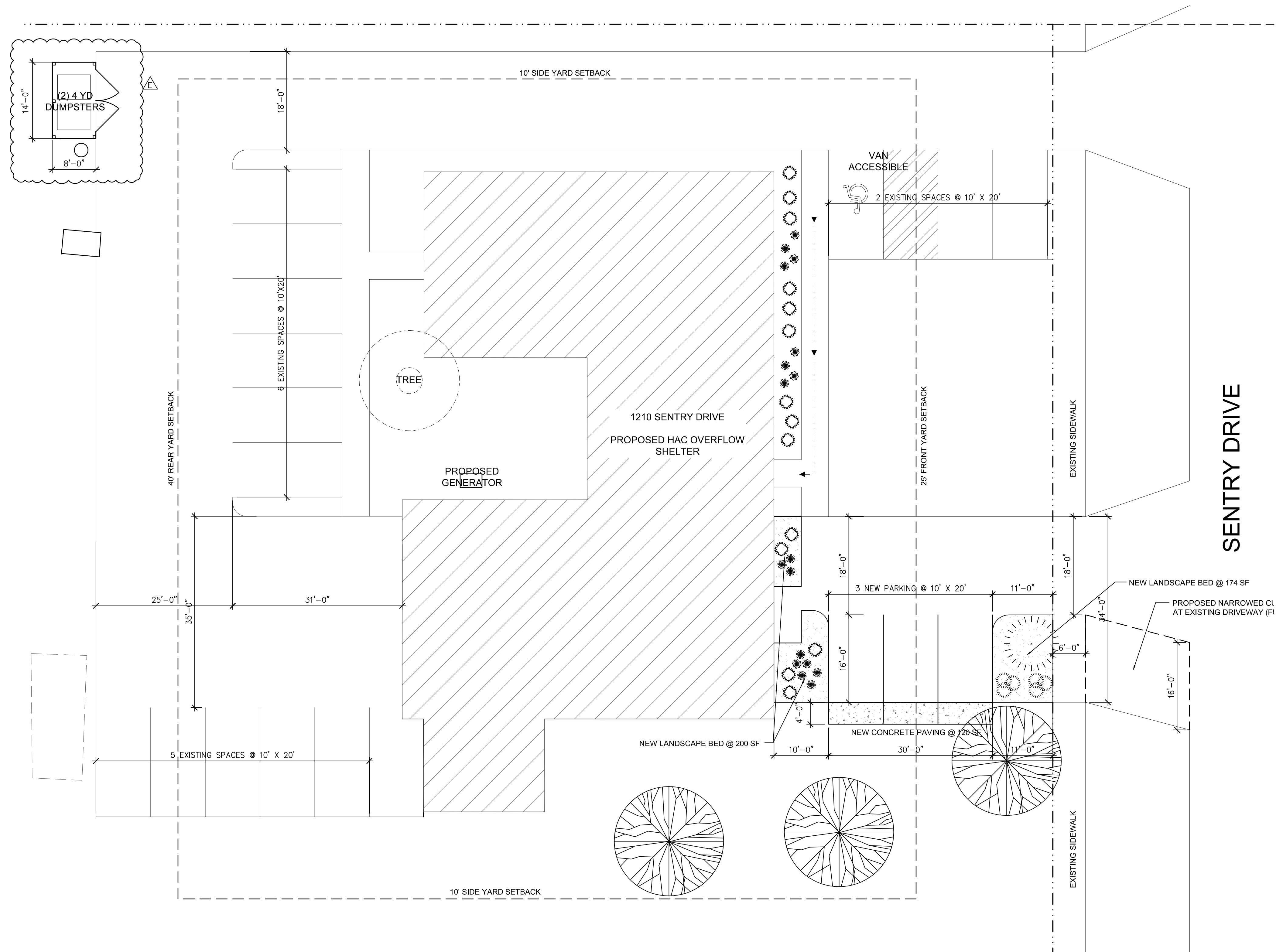
SITE PLAN INFORMATION

EXISTING SITE 0.7805 ACRES
 EXISTING PARKING 15 SPACES
 PROPOSED PARKING 3 ADDITIONAL SPACES
 TOTAL PARKING 18 SPACES

ADDING 120 SF IMPERVIOUS
 REDUCING IMPERVIOUS 374 SF
 NET CHANGE 214 SF LESS IMPERVIOUS

GENERAL NOTES

1. PROVIDE PRICE TO OWNER FOR RESURFACING AND STRIPING EXISTING ASPHALT PARKING LOT.
2. NEW STRIPING AT EXISTING SOUTH DRIVEWAY FOR 3 PARKING SPACES.
3. LANDSCAPING SHOWN ON PLAN IS REFERENCE, PROVIDE NEW LANDSCAPING MATERIALS AS NECESSARY UPON ASSESSMENT OF EXISTING.
4. REPAIR OR REPLACE ACCESSIBLE PARKING SIGNS TO MEET LOCAL REQUIREMENTS IF NEEDED.
5. REPAIR ALL CONCRETE SIDEWALK TO MAINTAIN LEVEL PATH OF TRAVEL FOR ACCESSIBILITY



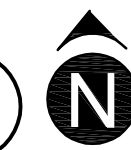
TRASH ENCLOSURE DESIGN INTENT
 SCALE: NTS

2

SITE PLAN

SCALE: 3/32" = 1'-0" @ 34x22

1



Architect
 259 South Street, Suite A
 WAUKESHA, WI 53186
 p: 833-380-6180
 e: jdb@thrive-architects.com



Contractor
 833 E Michigan St, Ste 1000
 Milwaukee, WI 53202
 p: 414-727-6840
 e: ewilliams@catalystbuilds.com

Project Info. — 20089

HAC OVERFLOW SHELTER

INTERIOR ALTERATION
 1210 SENTRY DRIVE
 WAUKESHA, WI 53186

Sheet Title

SITE PLAN

Drawn by	Checked by
ALS	DMR

Revisions		
No.	Date	Description
	06.04.21	PERMIT
△	06.24.21	ADDENDUM A
△	07.12.21	REVIEW RESPONSE
△	08.09.21	BULLETIN 1
△	08.30.21	BULLETIN 2
△	10.14.21	PC REVISION

Sheet No.

SP1.0

06-04-21 PERMIT SET