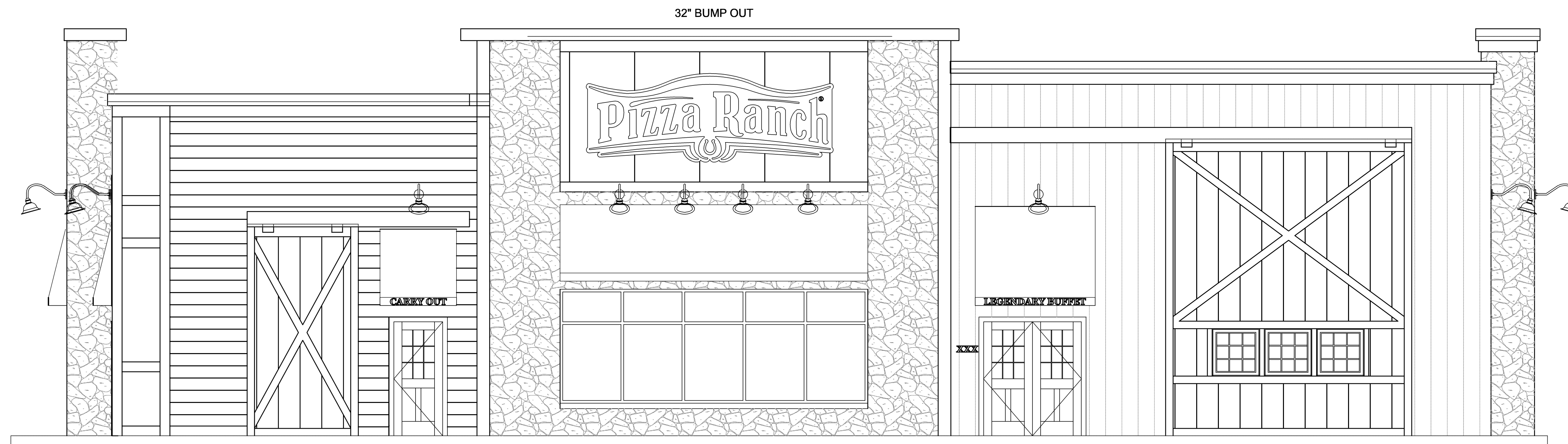


WALL MATERIAL SCHEDULE					
MARK	DESCRIPTION	MANUFACTURER	MODEL	COLOR	COMMENTS
EF-1	ENGINEERED WOOD COMPOSITE	LP BUILDING PRODUCTS	SMARTSIDE	FACTORY FINISHED MAPLE	7" LAP EXPOSURE
EF-2	ENGINEERED WOOD COMPOSITE	LP BUILDING PRODUCTS	SMARTSIDE	PAINT EP-2	SMOOTH, 9 x 4 BOARDS
EF-3	STONE	STONE CRAFT INDUSTRIES	FIELDSTONE	BUCKTOWN	
EF-4	ENGINEERED WOOD COMPOSITE	LP BUILDING PRODUCTS	SMARTSIDE	PAINT EP-4	4'-0" OC SEAMS
EF-12	CANOPY FABRIC	--	--	RUSTIC RED	STRETCH TIGHT OVER METAL FRAME; SUPPLIED BY OWNER/SIGN COMPANY, INSTALLED BY SIGN COMPANY
EF-14	ENGINEERED WOOD COMPOSITE	LP BUILDING PRODUCTS	SMARTSIDE	PAINT EP-2	16" SEAMS

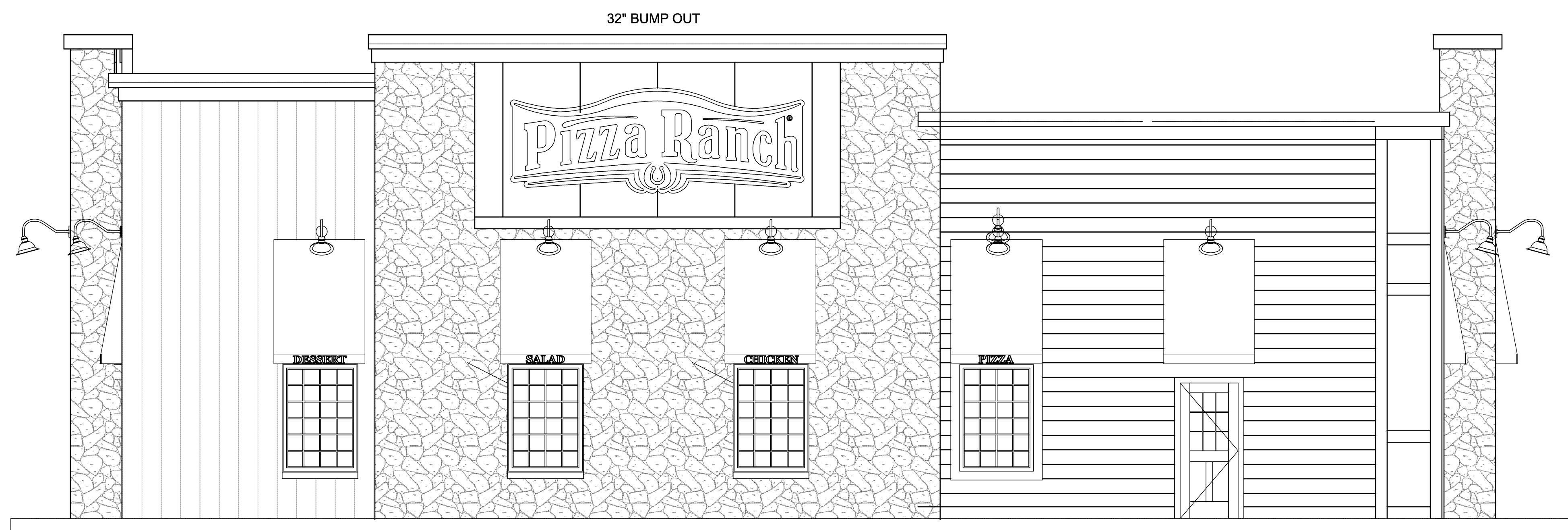
TRIM / ACCENT SCHEDULE					
MARK	MATERIAL TYPE	MANUFACTURER	MODEL	SIZE	COMMENTS
EF-5	ENGINEERED WOOD COMPOSITE	LP BUILDING PRODUCTS	SMARTSIDE	5/4" x 4"	PAINTED EP-1
EF-6	ENGINEERED WOOD COMPOSITE	LP BUILDING PRODUCTS	SMARTSIDE	5/4" x 6"	PAINTED EP-1
EF-7	ENGINEERED WOOD COMPOSITE	LP BUILDING PRODUCTS	SMARTSIDE	5/4" x 8"	PAINTED EP-1
EF-8	ENGINEERED WOOD COMPOSITE	LP BUILDING PRODUCTS	SMARTSIDE	5/4" x 10"	PAINTED EP-1
EF-9	ENGINEERED WOOD COMPOSITE	LP BUILDING PRODUCTS	SMARTSIDE	5/4" x 12"	PAINTED EP-1
EF-13	METAL PLATE			6" x 8"	PAINTED BLACK
EF-14	ENGINEERED WOOD COMPOSITE	LP BUILDING PRODUCTS	SMARTSIDE	PAINT EP-2	16" SEAMS

EXTERIOR PAINT SCHEDULE				
MARK	MANUFACTURER	FINISH	COLOR	COMMENTS
EP-1	SHERWIN WILLIAMS	FLAT	6083 SABLE	TYP AT EXTERIOR TRIM
EP-2	SHERWIN WILLIAMS	SATIN	6102 PORTABELLO	TYP AT EF-2
EP-3	SHERWIN WILLIAMS	FLAT	7592 CRABBY APPLE	NOT USED
EP-4	SHERWIN WILLIAMS	SATIN	6149 RELAXED KHAKI	TYP AT EF-4

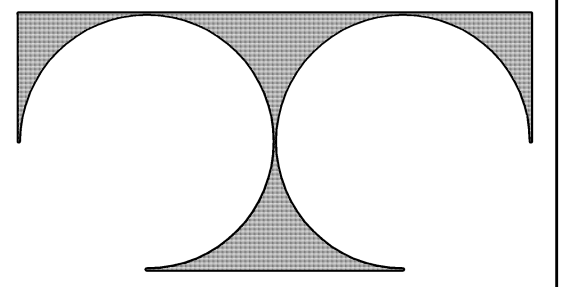
CAP FLASHING SCHEDULE				
MARK	MANUFACTURER	MODEL/TYPE	COLOR	COMMENTS
EF-11	UNA CLAD	SMOOTH	MEDIUM BRONZE	



1 SOUTH EXTERIOR ELEVATION
1/4" = 1'-0"



1 EAST EXTERIOR ELEVATION
1/4" = 1'-0"



TDI ASSOCIATES, INC.
ARCHITECTURE, ENGINEERING, PLANNING

N8 W22350 JOHNSON DRIVE, SUITE B4
WAUKESHA, WISCONSIN 53186
PHONE 262-409-2530 FAX 262-409-2531



PIZZA RANCH #8610

FLEETFOOT DRIVE
WAUKESHA, WISCONSIN

TDI ASSOCIATES, INC.
All Rights Reserved

OWNERSHIP OF DOCUMENTS

This document, and the ideas and design incorporated herein, as an instrument of professional service, is the sole property of TDI Associates, Inc., and is not to be used in whole or in part for any other project or purpose without the expressed written authorization of TDI Associates, Inc.

Sheet Title
Exterior Elevations

Issued For: Date:
REV EXTERIOR 7-31-17

Date: 7-19-2017

Job NO.: 15383

Drawn By:

Sheet No.

A2-11

WALL MATERIAL SCHEDULE

MARK	DESCRIPTION	MANUFACTURER	MODEL	COLOR	COMMENTS
EF-1	ENGINEERED WOOD COMPOSITE	LP BUILDING PRODUCTS	SMARTSIDE	FACTORY FINISHED MAPLE	7" LAP EXPOSURE
EF-2	ENGINEERED WOOD COMPOSITE	LP BUILDING PRODUCTS	SMARTSIDE	PAINT EP-2	SMOOTH, 9 x 4 BOARDS
EF-3	STONE	STONE CRAFT INDUSTRIES	FIELDSTONE	BUCKTOWN	
EF-4	ENGINEERED WOOD COMPOSITE	LP BUILDING PRODUCTS	SMARTSIDE	PAINT EP-4	4'-0" OC SEAMS
EF-12	CANOPY FABRIC			RUSTIC RED	STRETCH TIGHT OVER METAL FRAME, SUPPLIED BY OWNER/SIGN COMPANY, INSTALLED BY SIGN COMPANY
EF-14	ENGINEERED WOOD COMPOSITE	LP BUILDING PRODUCTS	SMARTSIDE	PAINT EP-2	16" SEAMS

TRIM / ACCENT SCHEDULE

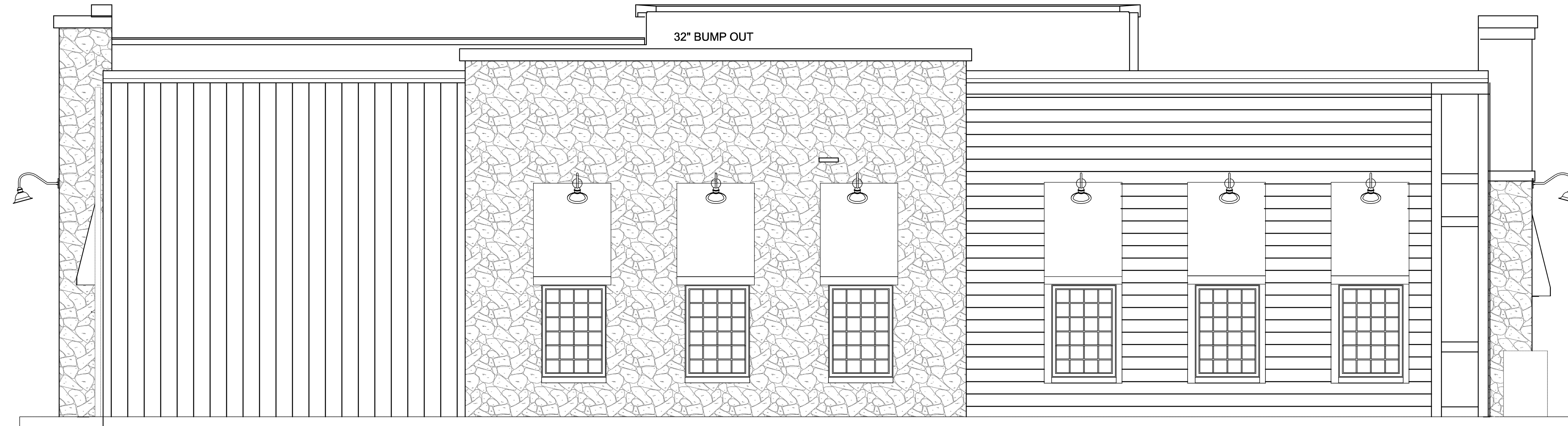
MARK	MATERIAL TYPE	MANUFACTURER	MODEL	SIZE	COMMENTS
EF-5	ENGINEERED WOOD COMPOSITE	LP BUILDING PRODUCTS	SMARTSIDE	5/4" x 4"	PAINTED EP-1
EF-6	ENGINEERED WOOD COMPOSITE	LP BUILDING PRODUCTS	SMARTSIDE	5/4" x 6"	PAINTED EP-1
EF-7	ENGINEERED WOOD COMPOSITE	LP BUILDING PRODUCTS	SMARTSIDE	5/4" x 8"	PAINTED EP-1
EF-8	ENGINEERED WOOD COMPOSITE	LP BUILDING PRODUCTS	SMARTSIDE	5/4" x 10"	PAINTED EP-1
EF-9	ENGINEERED WOOD COMPOSITE	LP BUILDING PRODUCTS	SMARTSIDE	5/4" x 12"	PAINTED EP-1
EF-13	METAL PLATE			6" x 8"	PAINTED BLACK
EF-14	ENGINEERED WOOD COMPOSITE	LP BUILDING PRODUCTS	SMARTSIDE	PAINT EP-2	16" SEAMS

EXTERIOR PAINT SCHEDULE

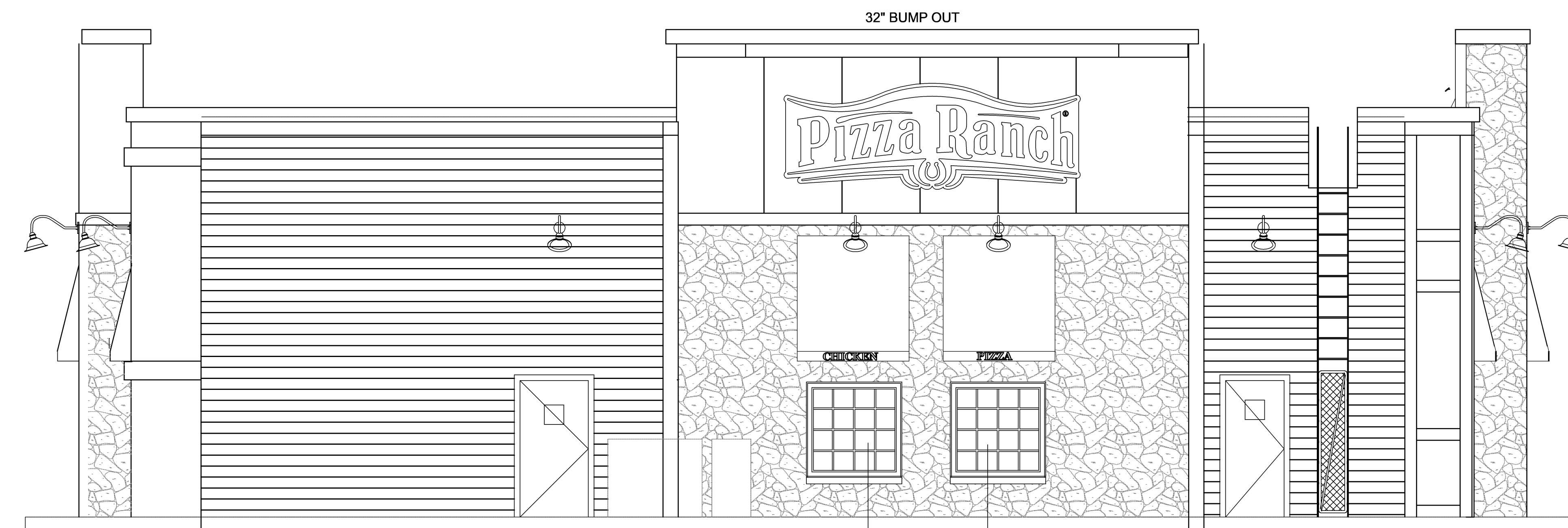
MARK	MANUFACTURER	FINISH	COLOR	COMMENTS
EP-1	SHERWIN WILLIAMS	FLAT	6083 SABLE	TYP AT EXTERIOR TRIM
EP-2	SHERWIN WILLIAMS	SATIN	6102 PORTABELLO	TYP AT EF-2
EP-3	SHERWIN WILLIAMS	FLAT	7592 CRABBY APPLE	NOT USED
EP-4	SHERWIN WILLIAMS	SATIN	6149 RELAXED KHAKI	TYP AT EF-4

CAP FLASHING SCHEDULE

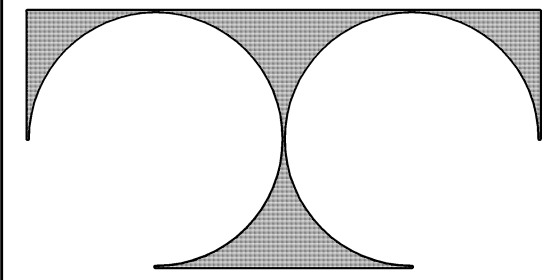
MARK	MANUFACTURER	MODEL/TYPE	COLOR	COMMENTS
EF-11	UNA CLAD	SMOOTH	MEDIUM BRONZE	



1 NORTH EXTERIOR ELEVATION
1/4" = 1'-0"



1 WEST EXTERIOR ELEVATION
1/4" = 1'-0"



TDI ASSOCIATES, INC.
ARCHITECTURE, ENGINEERING, PLANNING

N8 W22350 JOHNSON DRIVE, SUITE B4
WAUKESHA, WISCONSIN 53186
PHONE 262-409-2530 FAX 262-409-2531



PIZZA RANCH #8610

FLEETFOOT DRIVE
WAUKESHA, WISCONSIN

TDI ASSOCIATES, INC
All Rights Reserved

OWNERSHIP OF DOCUMENTS

This document, and the ideas and design incorporated herein, as an instrument of professional service, is the sole property of TDI Associates, Inc., and is not to be used in whole or in part for any other project or purpose without the expressed written authorization of TDI Associates, Inc.

Sheet Title
Exterior Elevations

Issued For: REV EXTERIOR Date: 7-31-17

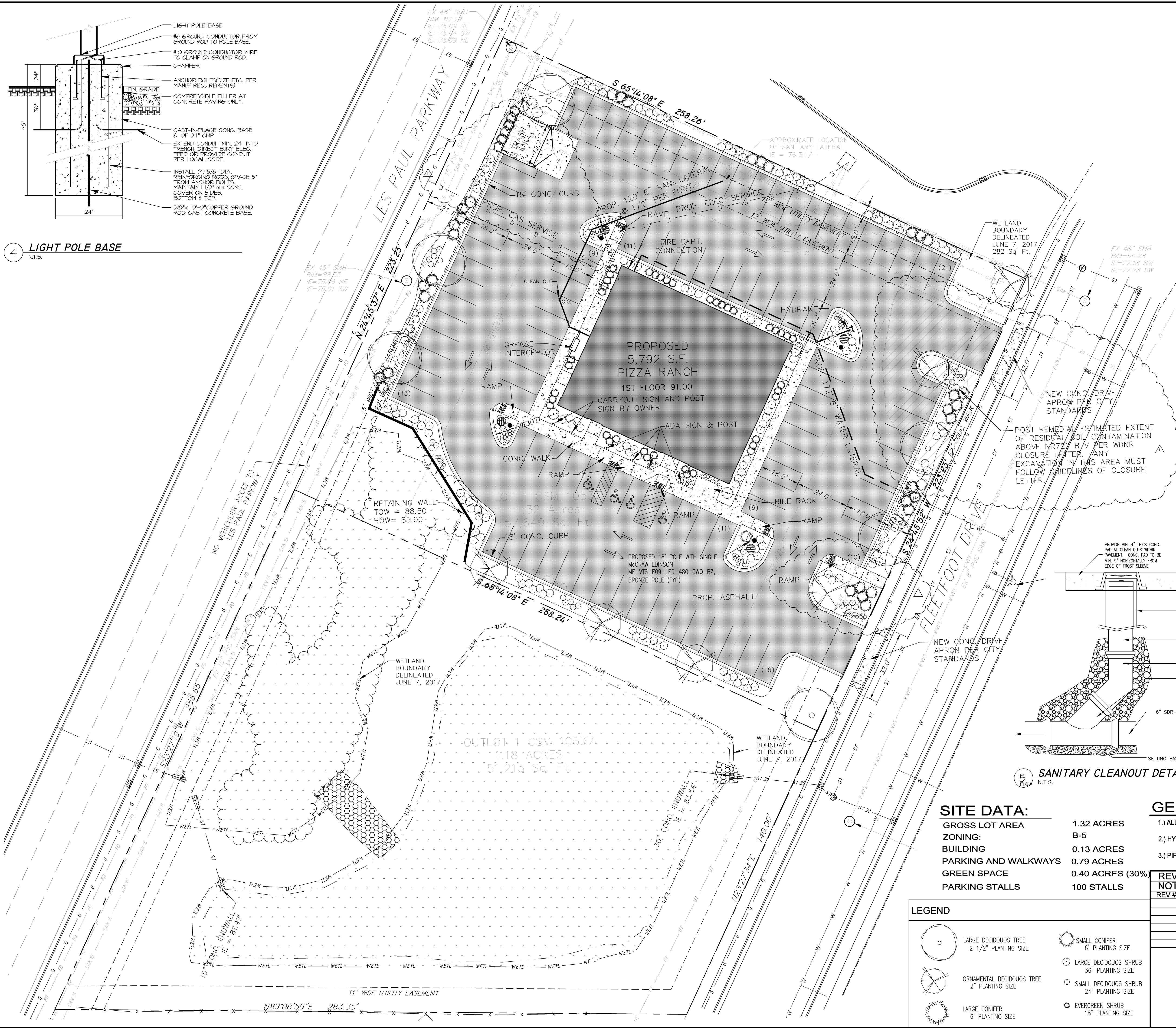
Date: 7-19-2017

Job NO.: 15363

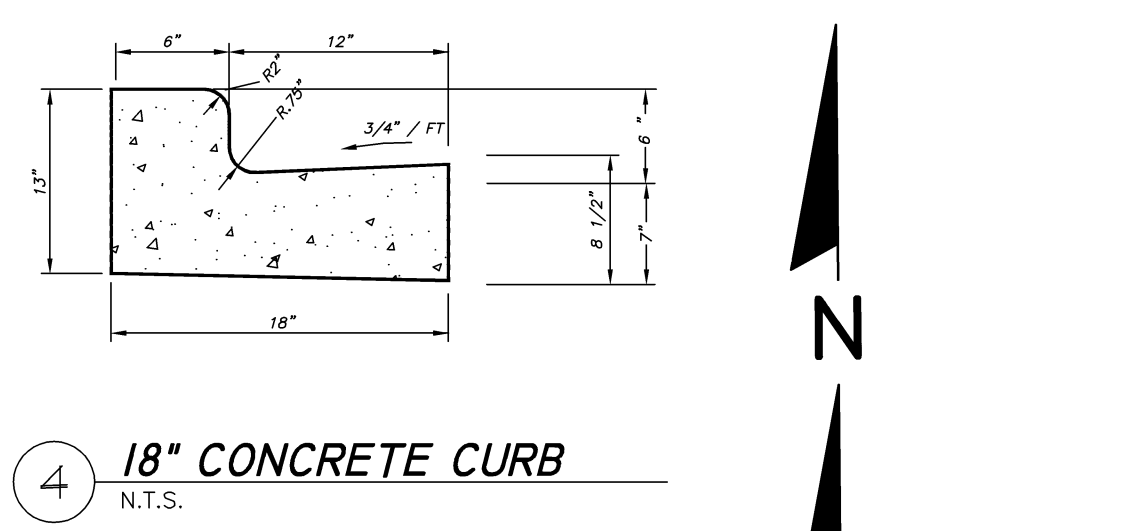
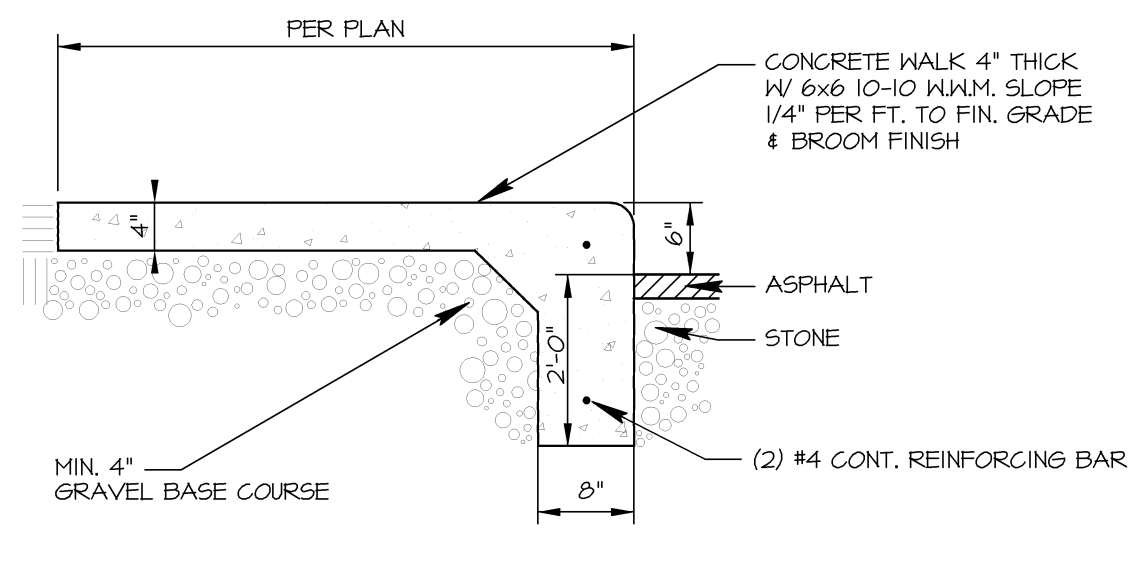
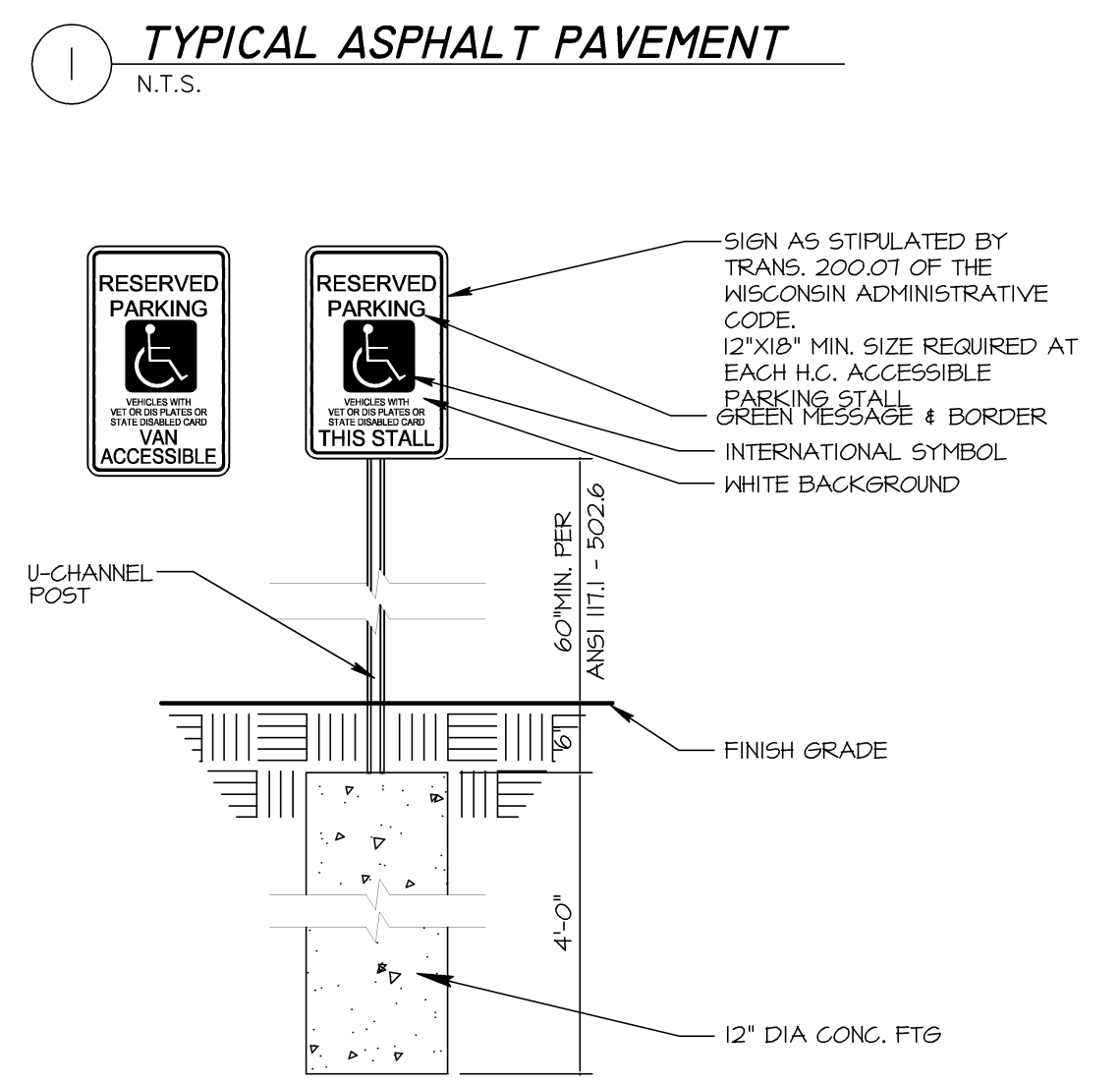
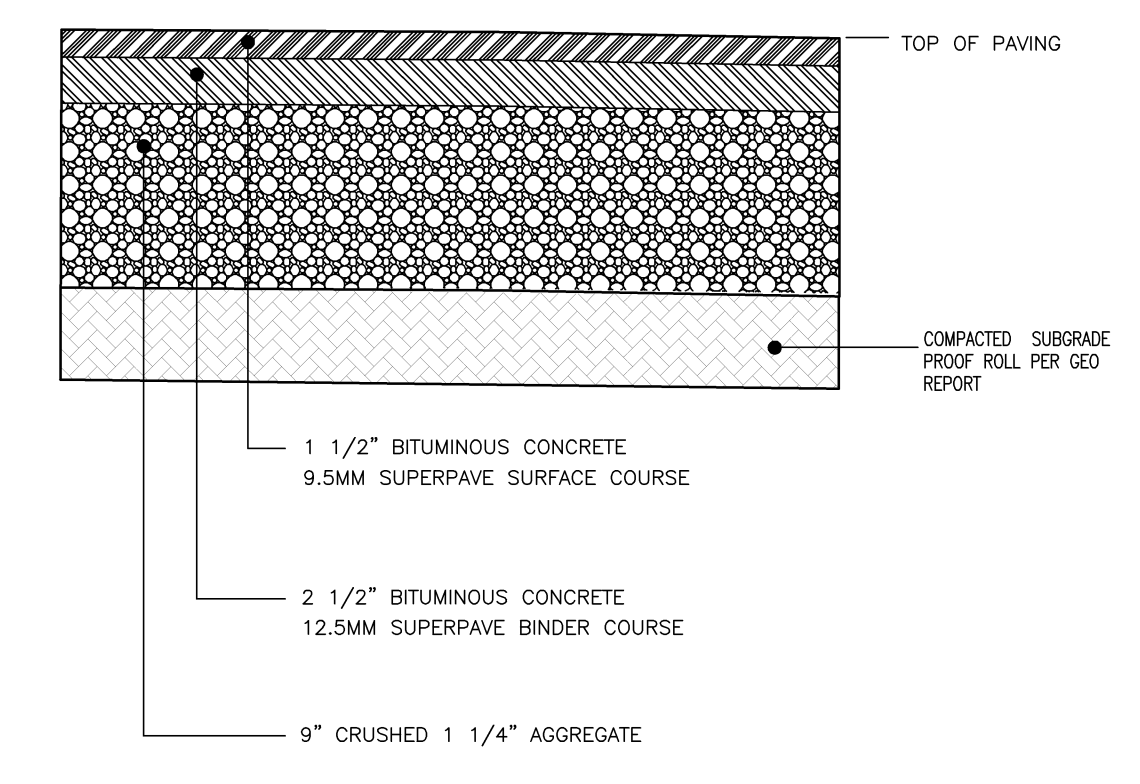
Drawn By:

Sheet No.

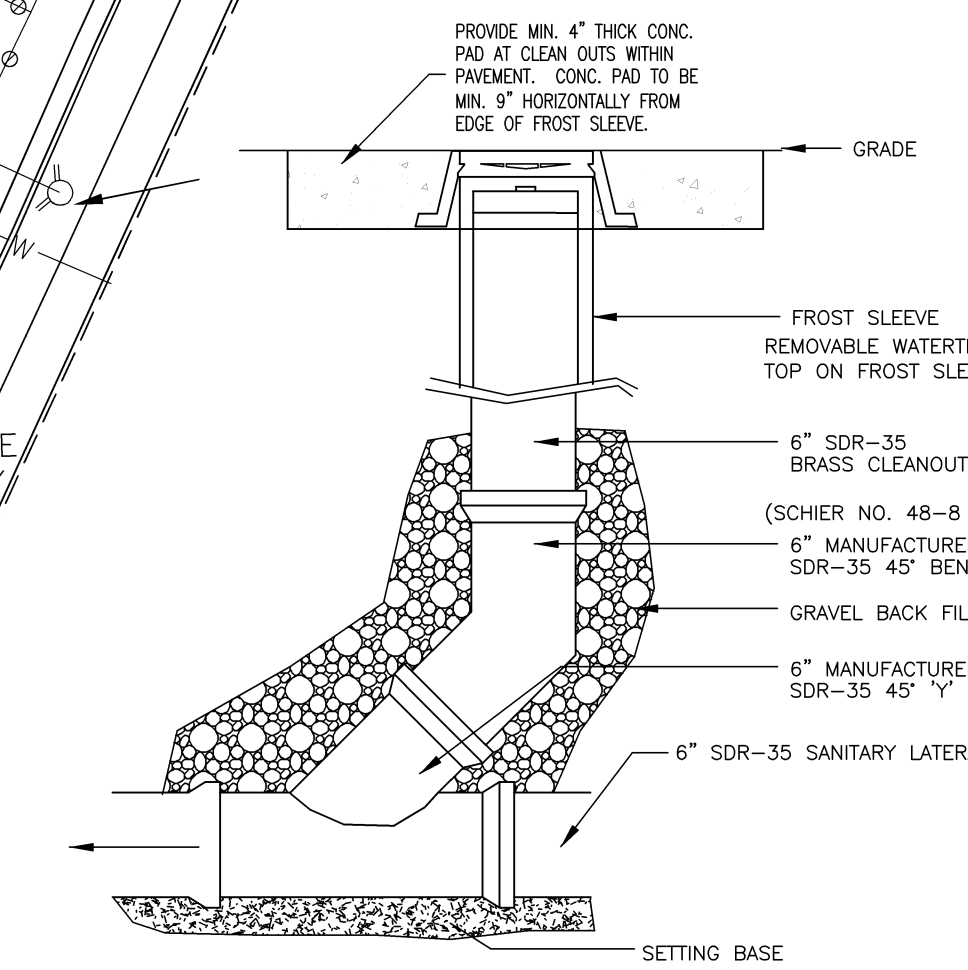
A2-12



4 LIGHT POLE BASE
N.T.S.



5 SANITARY CLEANOUT DETAIL
N.T.S.



SITE DATA:

GROSS LOT AREA	1.32 ACRES
ZONING:	B-5
BUILDING	0.13 ACRES
PARKING AND WALKWAYS	0.79 ACRES
GREEN SPACE	0.40 ACRES (30%)
PARKING STALLS	100 STALLS

- GENERAL NOTES:**
- 1.) ALL SANITARY LATERALS TO MAINTAIN MINIMUM 60" COVER.
 - 2.) HYDRANT LEAD TO MAINTAIN 72" COVER.
 - 3.) PIPE MATERIALS: Sanitary Lateral = 6" PVC SDR 35 ASTM D1785
Water Lateral = PVC AWWA C900 ASTM D 2241,

LEGEND

	LARGE DECIDUOUS TREE 2 1/2" PLANTING SIZE		SMALL CONIFER 6" PLANTING SIZE
	ORNAMENTAL DECIDUOUS TREE 2" PLANTING SIZE		LARGE DECIDUOUS SHRUB 36" PLANTING SIZE
	LARGE CONIFER 6" PLANTING SIZE		SMALL DECIDUOUS SHRUB 24" PLANTING SIZE
			EVERGREEN SHRUB 18" PLANTING SIZE

REVISIONS:		TDI ASSOCIATES, INC. All Rights Reserved N8 W2290 JOHNSON DRIVE, SUITE B4 WAUKESHA, WISCONSIN 53186 PHONE 262-409-2530 FAX 262-409-2531	 TDI ASSOCIATES, INC. ARCHITECTURE, ENGINEERING, PLANNING	OWNERSHIP OF DOCUMENTS This document and the ideas and design incorporated herein, as an instrument of professional service, is the sole property of TDI Associates, Inc., and is not to be used, in whole or in part, for any other project or purpose without the expressed written authorization of TDI Associates, Inc.
NOTE	DATE			
REV #1	08-02-17			
		CITY OF WAUKESHA, WI PIZZA RANCH #8610 - FLEETWOOD DRIVE SITE DEVELOPMENT PLAN		
SCALE: 1" = 20'-0"		JOB NO: 15-383.000	DATE: 07-19-17	
DESIGNED BY: ROB	DRAWN BY: ROB	CHECKED BY:		
APPROVED BY:	ENGINEER	DATE	SHEET C-2.0	

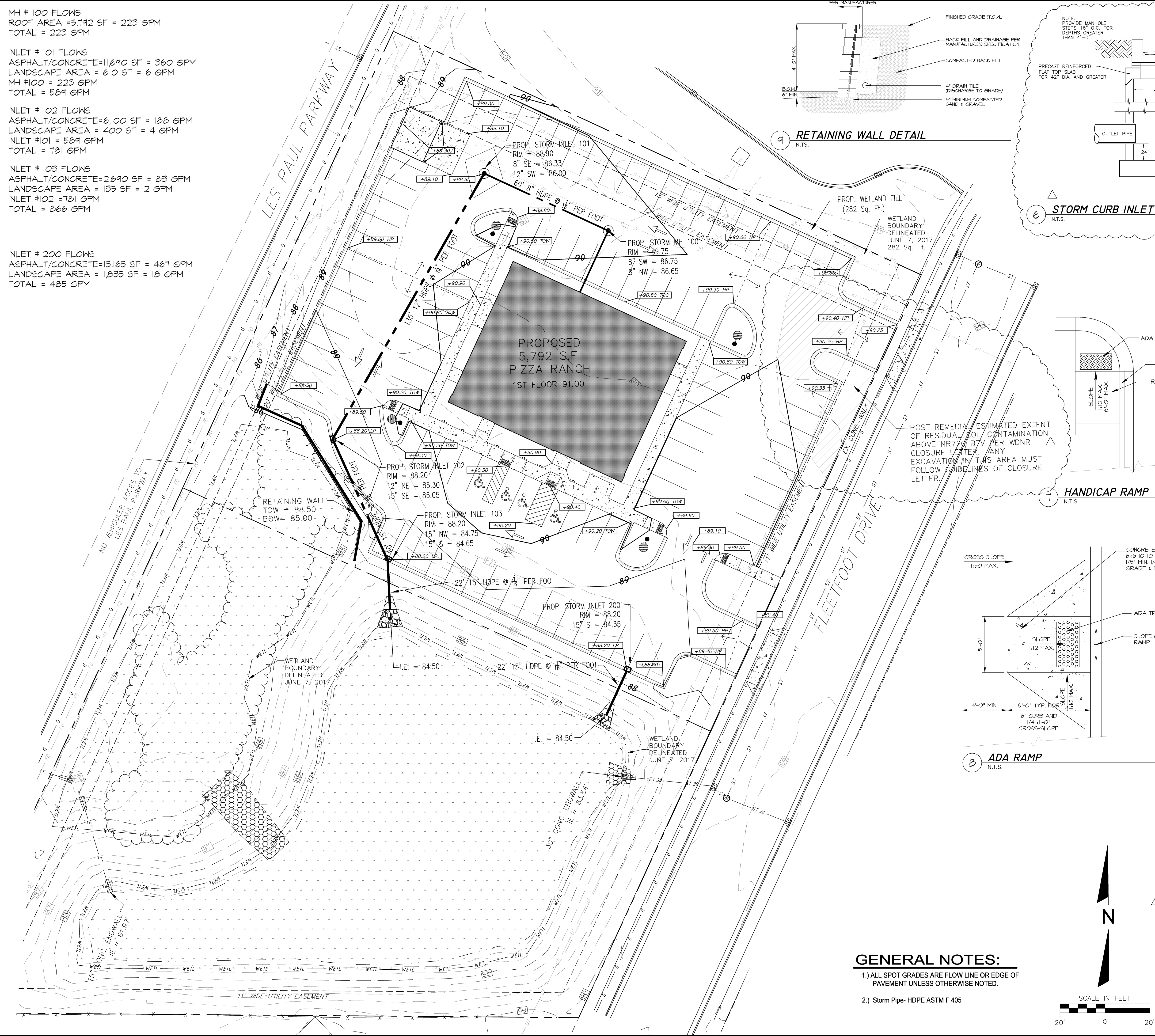
MH # 100 FLOWS
 ROOF AREA = 5,792 SF = 223 GPM
 TOTAL = 223 GPM

INLET # 101 FLOWS
 ASPHALT/CONCRETE=11,690 SF = 360 GPM
 LANDSCAPE AREA = 610 SF = 6 GPM
 MH #100 = 223 GPM
 TOTAL = 589 GPM

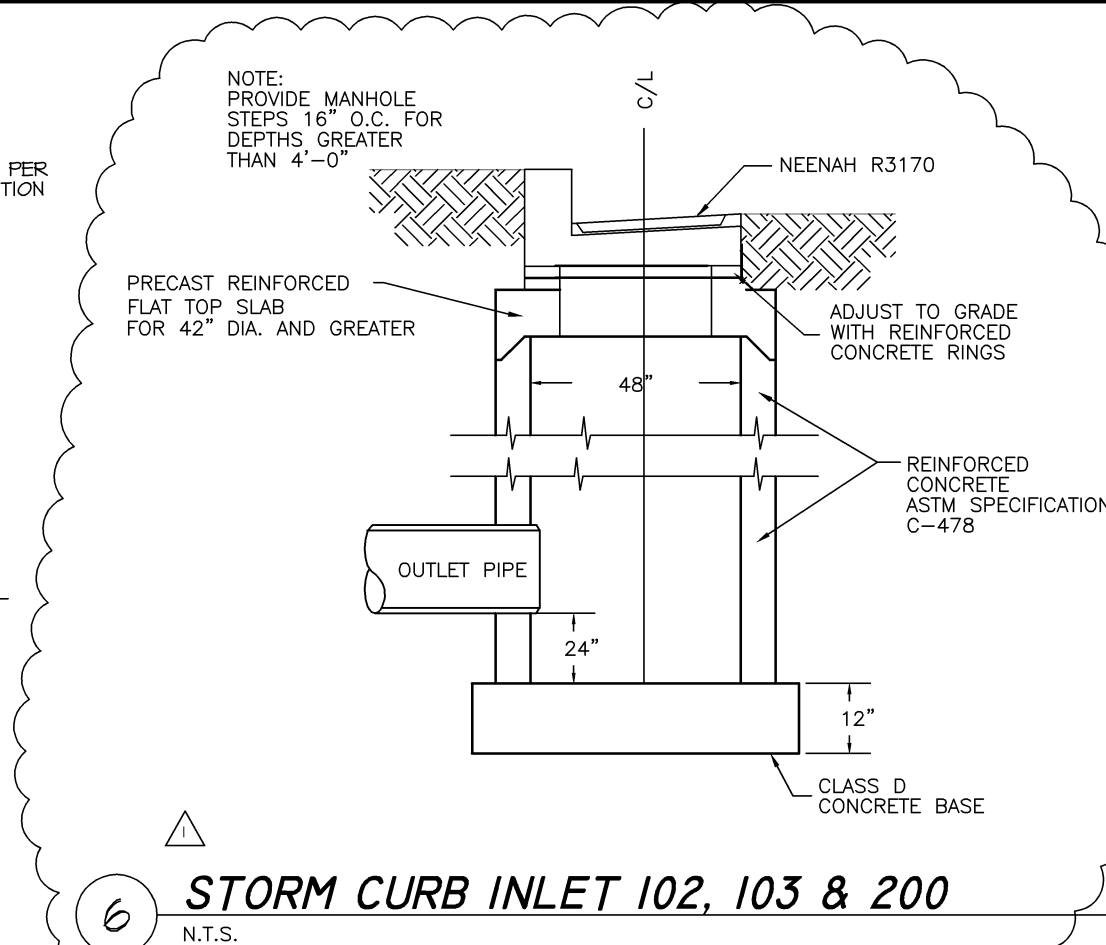
INLET # 102 FLOWS
 ASPHALT/CONCRETE=6,100 SF = 188 GPM
 LANDSCAPE AREA = 400 SF = 4 GPM
 INLET #101 = 589 GPM
 TOTAL = 781 GPM

INLET # 103 FLOWS
 ASPHALT/CONCRETE=2,690 SF = 83 GPM
 LANDSCAPE AREA = 135 SF = 2 GPM
 INLET #102 = 781 GPM
 TOTAL = 866 GPM

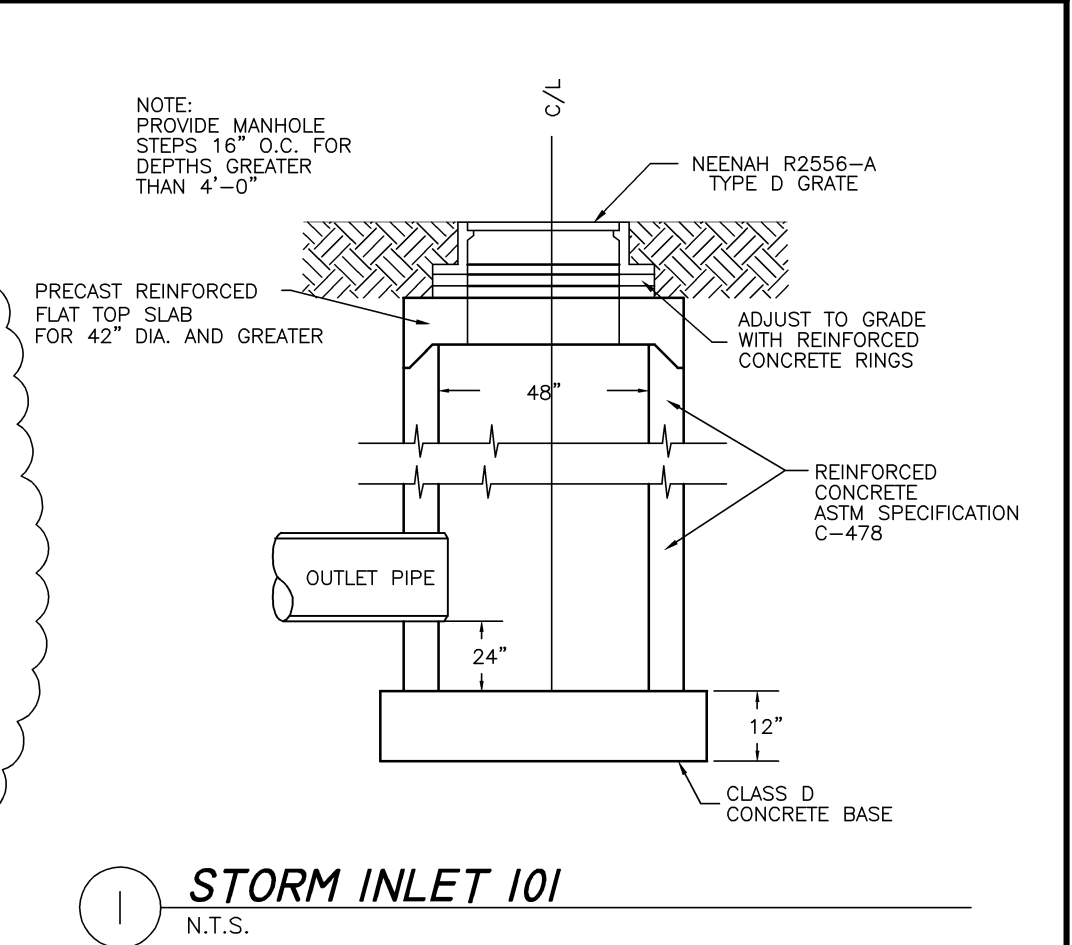
INLET # 200 FLOWS
 ASPHALT/CONCRETE=15,165 SF = 461 GPM
 LANDSCAPE AREA = 1,835 SF = 18 GPM
 TOTAL = 485 GPM



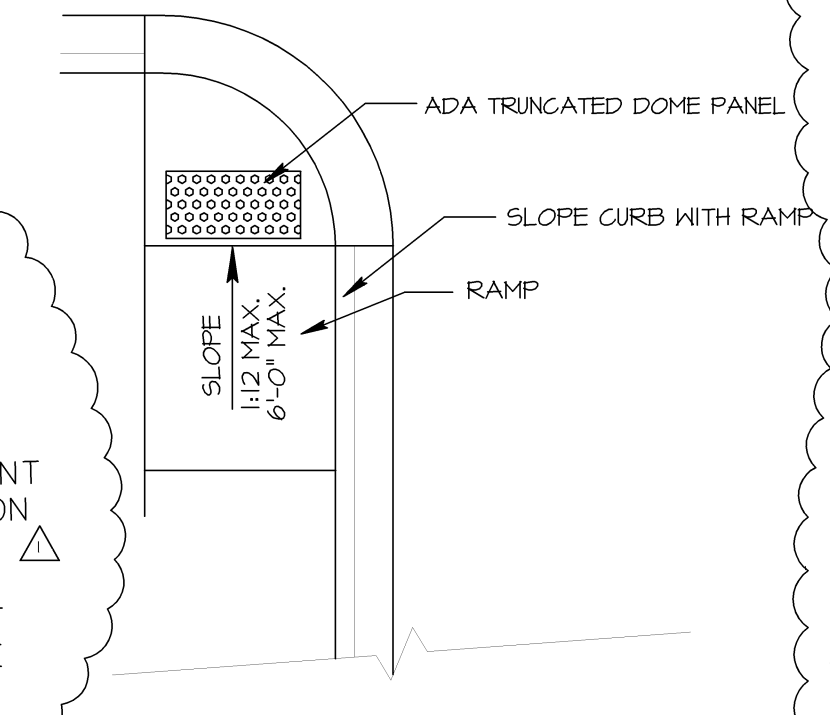
9 RETAINING WALL DETAIL
 N.T.S.



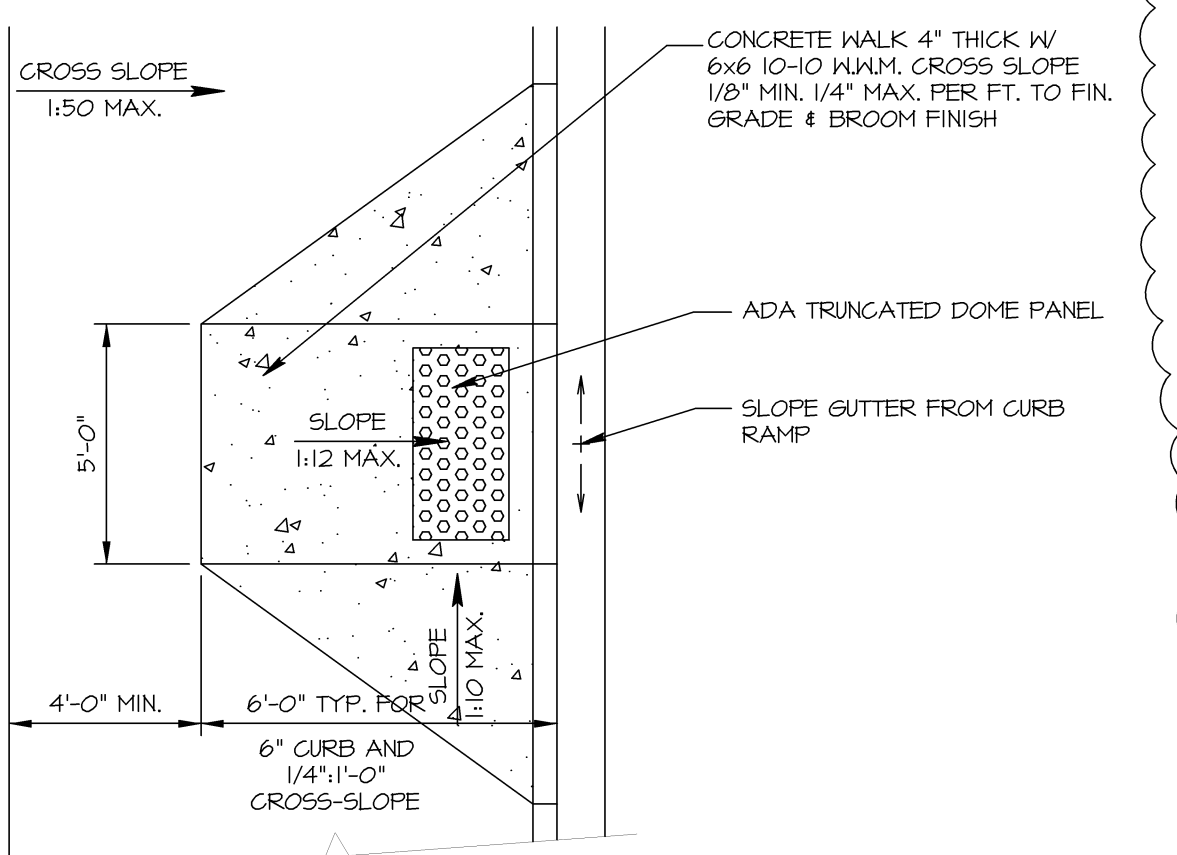
6 STORM CURB INLET 102, 103 & 200
 N.T.S.



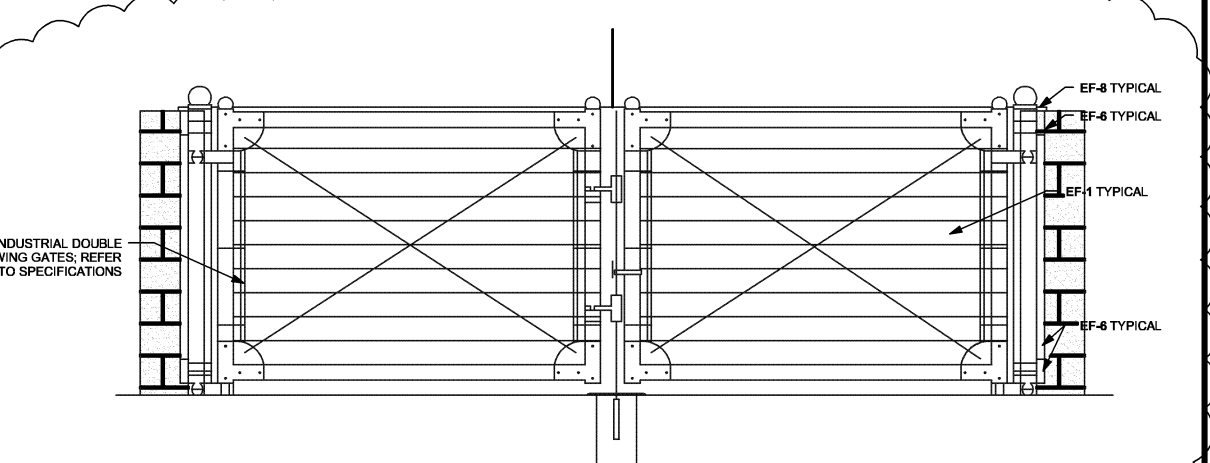
1 STORM INLET 101
 N.T.S.



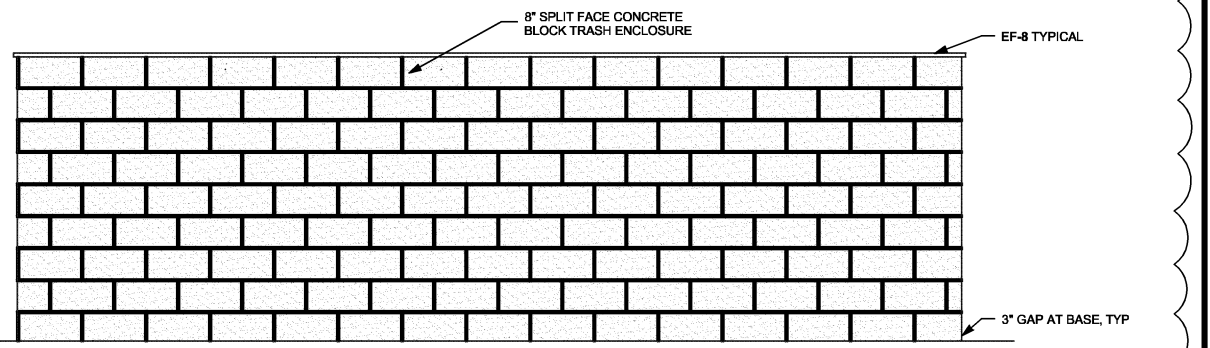
7 HANDICAP RAMP
 N.T.S.



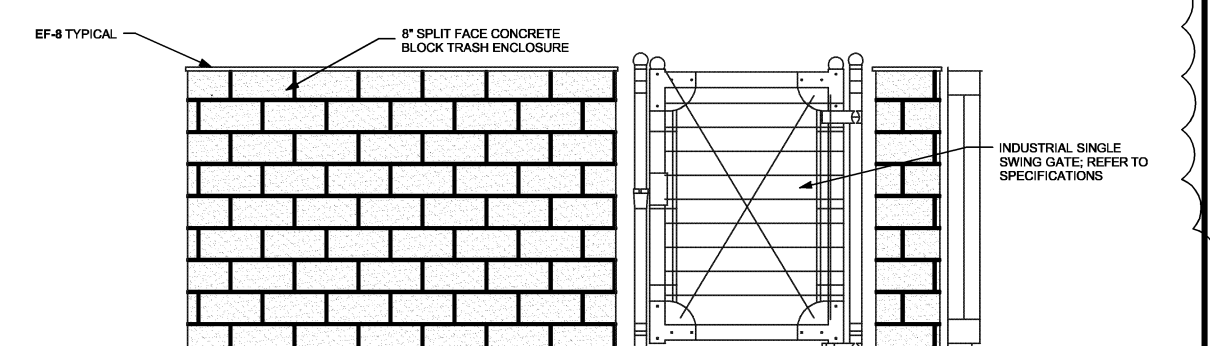
8 ADA RAMP
 N.T.S.



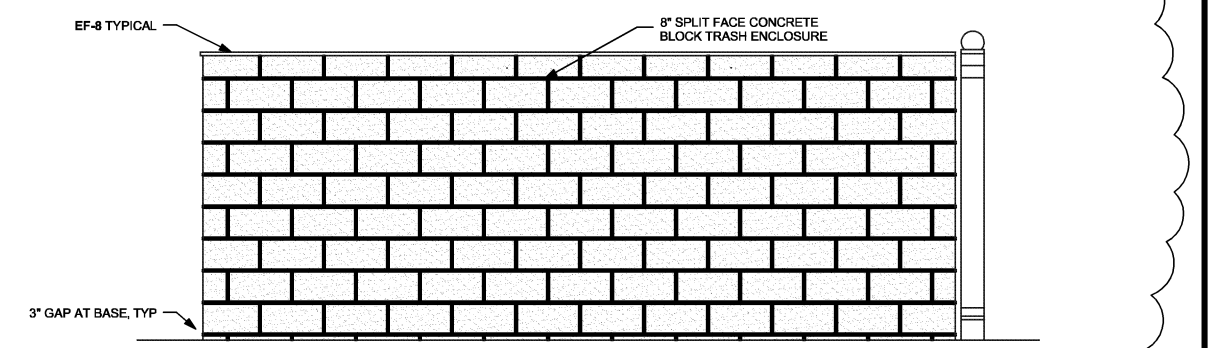
2 DUMPSTER ENCLOSURE FRONT
 1/4" = 1'-0"



3 DUMPSTER ENCLOSURE REAR
 1/4" = 1'-0"



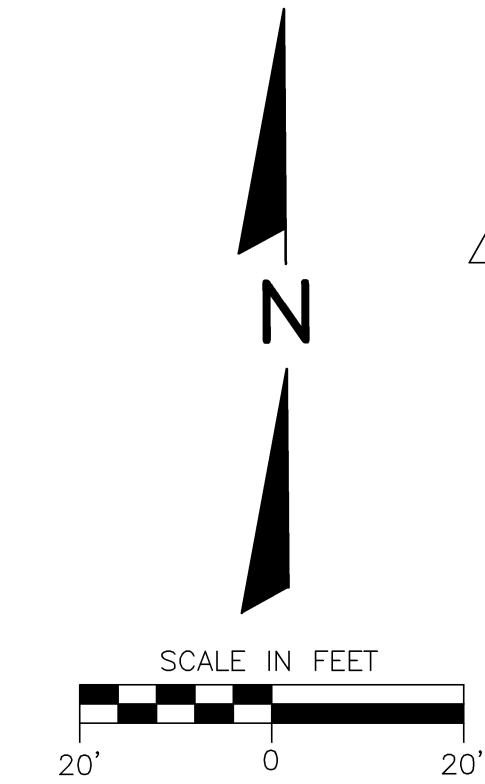
4 DUMPSTER ENCLOSURE LEFT
 1/4" = 1'-0"



5 DUMPSTER ENCLOSURE RIGHT
 1/4" = 1'-0"

GENERAL NOTES:

- 1) ALL SPOT GRADES ARE FLOW LINE OR EDGE OF PAVEMENT UNLESS OTHERWISE NOTED.
- 2) Storm Pipe- HDPE ASTM F 405



REVISIONS:	
NOTE	DATE
REV #1	08-02-17

TDI ASSOCIATES, INC All Rights Reserved N8 W2290 JOHNSON DRIVE, SUITE B4 WAUKESHA, WISCONSIN 53186 PHONE 262-409-2530 FAX 262-409-2531				OWNERSHIP OF DOCUMENTS This document and the ideas and design incorporated herein, as an instrument of professional service, is the sole property of TDI Associates, Inc. and it is to be used in whole or in part for any other project or purpose without the expressed written authorization of TDI Associates, Inc.	
CITY OF WAUKESHA, WI PIZZA RANCH #8610 - FLEETWOOD DRIVE SITE GRADING/DRAINAGE PLAN					
SCALE: 1" = 20'-0"		JOB NO: 15-383.000		DATE: 07-19-17	
DESIGNED BY: ROB		DRAWN BY: ROB		CHECKED BY:	
APPROVED BY:		ENGINEER		DATE	
				SHEET C-3.0	

SITE EROSION CONTROL NOTES

- ALL OFF-SITE SEDIMENT DEPOSITS OR TRACKED SOIL THAT ORIGINATED FROM THE PERMITTED SITE WILL BE CLEANED UP BY THE END OF EACH WORK DAY. ALL CONSTRUCTION TRAFFIC MUST ENTER/EXIT THE SITE OVER TRACKING PAD.
- ALL BEST MANAGEMENT PRACTICES SHALL BE INSPECTED WEEKLY AND AFTER RAIN EVENTS OF 1/2" OR MORE. CONTRACTOR SHALL REPAIR SAID BMP'S IMMEDIATELY.
- ALL WASTE MATERIAL MUST BE PROPERLY DISPOSED OF IN A TIMELY MANNER.
- ANY DISTURBED AREAS THAT REMAIN INACTIVE FOR GREATER THAN 14 DAYS SHALL BE STABILIZED WITH TEMPORARY MEASURES SUCH AS SOIL TREATMENT, TEMPORARY SEEDING, OR MULCH. STOCKPILES SHALL BE SEEDED WITH ANNUAL RYE GRASS. SEEDING SHALL FOLLOW KDNR TECHNICAL STANDARD 1054.
- ALL SILT FENCE SHALL COMPLY WITH KDNR CONSERVATION PRACTICE STANDARD 1056. INSTALL SILT FENCE ON THE DOWN SLOPE SIDE OF ALL TOPSOIL STOCKPILES TO REDUCE SEDIMENT RUNOFF.
- CONTRACTOR TO NOTIFY MUNICIPALITY WITHIN THREE DAYS OF COMMENCING WORK.
- CONTRACTOR TO OBTAIN APPROVALS FROM MUNICIPALITY, ENGINEER, KDNR AND DEVELOPER FOR ANY CHANGES TO THE PLAN PRIOR TO IMPLEMENTING.
- CONTRACTOR TO MAINTAIN ALL ROAD DRAINAGE SYSTEMS AND TRACKING PROVISIONS, STORM WATER DRAINAGE SYSTEMS, CONTROL MEASURES, AND OTHER FACILITIES IDENTIFIED ON THE PLAN.
- CONTRACTOR TO KEEP A COPY OF THE APPROVED PLAN ON SITE.
- ALL NECESSARY DEWATERING SHALL BE PERFORMED IN ACCORDANCE WITH KDNR TECH STANDARD 1061. DEWATERING SHALL BE TO A BMP DEVICE.
- REPLACE ANY NECESSARY SITE LANDSCAPING TO MAINTAIN STORM WATER MANAGEMENT SYSTEM ON AN ONGOING BASIS.
- CALL DIGGERS HOTLINE PRIOR TO ANY EXCAVATION IN ORDER TO LOCATE UNDERGROUND UTILITIES. ALL UTILITIES TO BE LOCATED BY CONTRACTOR PRIOR TO ANY CONSTRUCTION ACTIVITIES ON SITE.
- ALL AREAS TO BE SEEDED SHALL HAVE A MINIMUM 4" THICK TOPSOIL LAYER. AREAS SHALL BE SEED, FERTILIZED, AND MULCHED PER SEEDING RATES. AREAS NOT FINAL GRADED PRIOR TO SEPTEMBER 15th SHALL RECEIVE WINTER PROTECTION IN THE FORM OF EITHER TEMPORARY SEED WITH WINTER WHEAT/RYE AT A RATE OF 2lbs/1000 sq. ft. OR A POLYACRYLAMIDE (PAM) PER KDNR TECH STD. 1050. FINAL SEED TO BE DONE PRIOR TO JUNE 1st OF THE FOLLOWING YEAR.

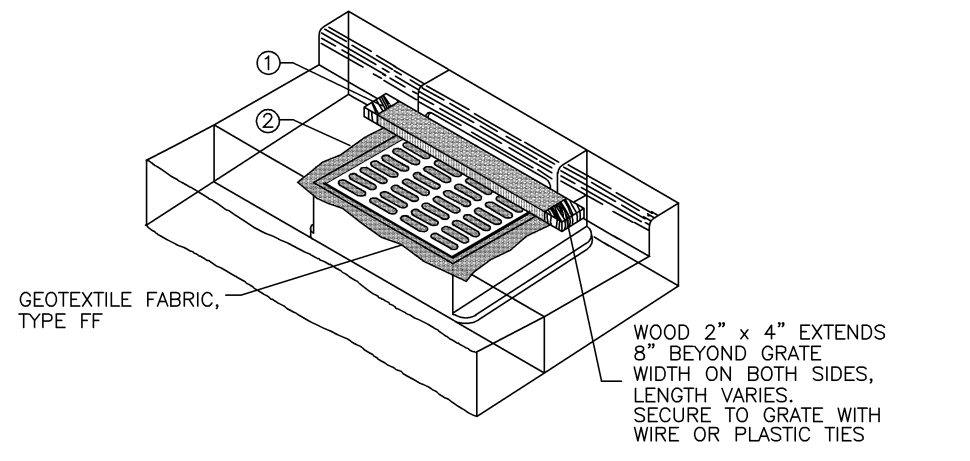
SEED MIX # 1 (Lawn)

- 95% KENTUCKY BLUEGRASS
- 20% CREEPING RED FESCUE
- 20% IMPROVED HARD FESCUE
- 25% IMPROVED FINE PERENNIAL RYEGRASS

APPLICATION RATE: 2lbs/1000 Sq. Ft. *
 APPLY STRAW MULCH IMMEDIATELY AFTER SEEDING
 TURF STARTER FERTILIZER: 20-10-10
 APPLICATION RATE: 5lbs/1000 Sq. Ft.

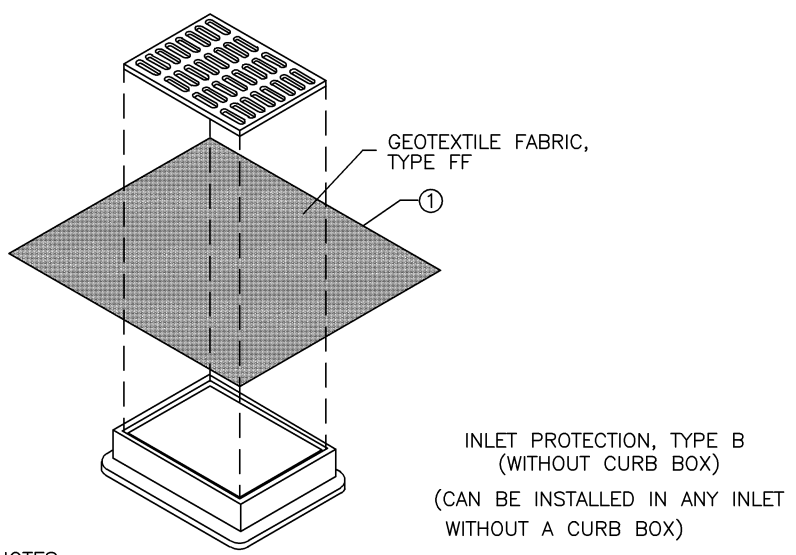
**ESTIMATED LAND DISTURBANCE = 1.3 ACRES
 SITE EROSION CONTROL CONSTRUCTION SEQUENCE**

- SEPTEMBER**
- INSTALL SILT FENCE, INLET PROTECTION AND TRACKING DRIVE.
 - STRIP ANY TOPSOIL AND REMOVE FROM SITE.
 - ROUGH GRADE TO SUBGRADE FOR UTILITY, INSTALLATION, AND BUILDING PAD TO APPROXIMATELY 6" BELOW FINISHED FLOOR.
 - EXCAVATE FOOTINGS FOR BUILDING.
- OCTOBER-DECEMBER**
- INSTALL UTILITIES. (WATER, SANITARY AND STORM) INSTALL NEW INLET PROTECTION IN INLETS AS BUILT.
 - COORDINATE INSTALLATION OF PRIVATE UTILITIES (ELEC., GAS, ETC.)
 - INSTALL GRAVEL DRIVES
 - INSTALL CURB, GUTTER, AND CONCRETE WALKS
 - PLACE ASPHALT.
- MARCH - JULY**
- UPON COMPLETION OF BUILDING, INSTALL FINISHED LANDSCAPE.
 - UPON STABILIZATION OF SITE REMOVE SILT FENCE AND ANY OTHER EROSION CONTROL DEVICES.



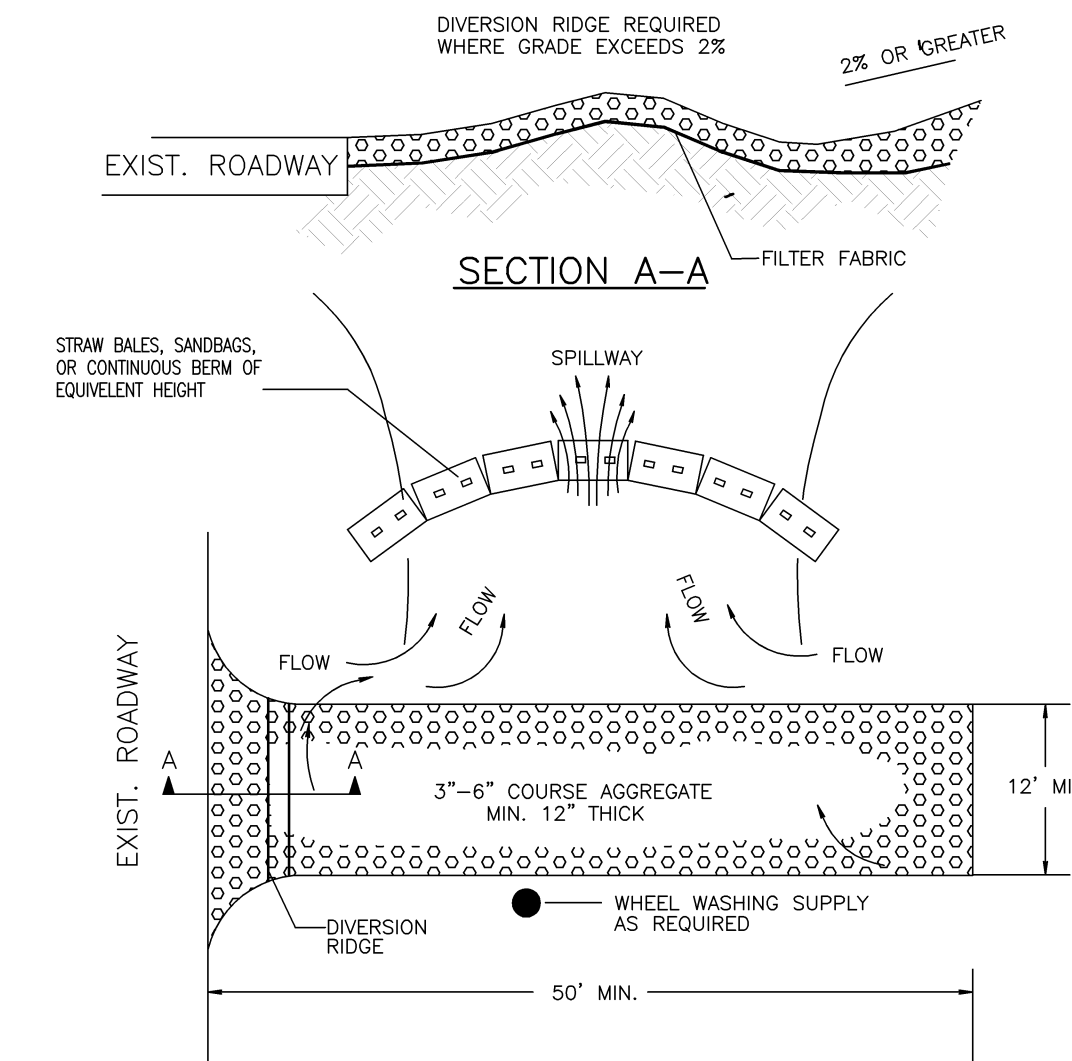
- INSTALLATION NOTES:**
- AN ADDITIONAL 18" OF FABRIC IS WRAPPED AROUND THE WOOD AND SECURED WITH STAPLES. THE WOOD SHALL NOT BLOCK THE ENTIRE HEIGHT OF THE CURB BOX OPENING.
 - FINISHED SIZE INCLUDING FLAP POCKETS WHERE REQUIRED SHALL EXTEND A MINIMUM 10" AROUND THE PERIMETER TO FACILITATE MAINTENANCE OR REMOVAL.
 - TRIM EXCESS FABRIC IN THE FLOW LINE TO WITHIN 3" OF THE GRATE.
 - THE CONTRACTOR SHALL DEMONSTRATE A METHOD OF MAINTENANCE, USING A SEWN FLAP, HAND HOLDS OR OTHER METHOD TO PREVENT ACCUMULATED SEDIMENT FROM ENTERING THE INLET.
 - WHEN REMOVING OR MAINTAINING INLET PROTECTION, CARE SHALL BE TAKEN SO THAT THE SEDIMENT TRAPPED ON THE GEOTEXTILE FABRIC DOES NOT FALL INTO THE INLET. ANY MATERIAL FALLING INTO THE INLET SHALL BE REMOVED IMMEDIATELY.
 - MANUFACTURED ALTERNATIVES APPROVED AND LISTED ON THE WDOT EROSION CONTROL PRODUCT ACCEPTABILITY LIST MAY BE SUBSTITUTED.

1 INLET PROTECTION TYPE 'C'
N.T.S.



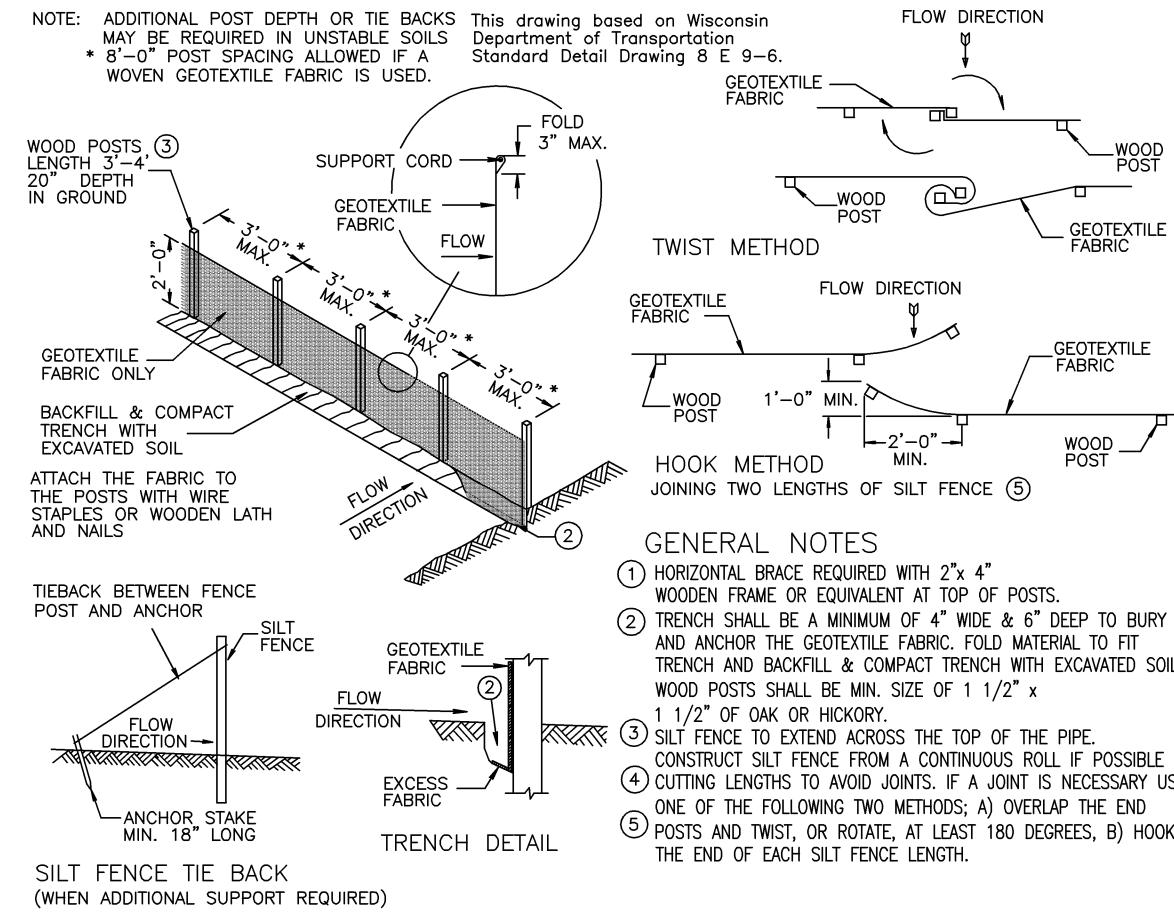
- INSTALLATION NOTES:**
- FINISHED SIZE INCLUDING FLAP POCKETS WHERE REQUIRED SHALL EXTEND A MINIMUM 10" AROUND THE PERIMETER TO FACILITATE MAINTENANCE OR REMOVAL.
 - TRIM EXCESS FABRIC IN THE FLOW LINE TO WITHIN 3" OF THE GRATE.
 - THE CONTRACTOR SHALL DEMONSTRATE A METHOD OF MAINTENANCE, USING A SEWN FLAP, HAND HOLDS OR OTHER METHOD TO PREVENT ACCUMULATED SEDIMENT FROM ENTERING THE INLET.
 - WHEN REMOVING OR MAINTAINING INLET PROTECTION, CARE SHALL BE TAKEN SO THAT THE SEDIMENT TRAPPED ON THE GEOTEXTILE FABRIC DOES NOT FALL INTO THE INLET. ANY MATERIAL FALLING INTO THE INLET SHALL BE REMOVED IMMEDIATELY.
 - MANUFACTURED ALTERNATIVES APPROVED AND LISTED ON THE WDOT EROSION CONTROL PRODUCT ACCEPTABILITY LIST MAY BE SUBSTITUTED.

2 INLET PROTECTION TYPE 'B'
N.T.S.



- GENERAL NOTES:**
- HORIZONTAL BRACE REQUIRED WITH 2"x4" WOODEN FRAME OR EQUIVALENT AT TOP OF POSTS.
 - TRENCH SHALL BE A MINIMUM OF 4" WIDE & 6" DEEP TO BURY AND ANCHOR THE GEOTEXTILE FABRIC. FOLD MATERIAL TO FIT TRENCH AND BACKFILL & COMPACT TRENCH WITH EXCAVATED SOIL. WOOD POSTS SHALL BE MIN. SIZE OF 1 1/2" x 1 1/2" OF OAK OR HICKORY.
 - SILT FENCE TO EXTEND ACROSS THE TOP OF THE PIPE. CONSTRUCT SILT FENCE FROM A CONTINUOUS SOIL IF POSSIBLE BY CUTTING LENGTHS TO AVOID JOINTS. IF A JOINT IS NECESSARY USE ONE OF THE FOLLOWING TWO METHODS: A) OVERLAP THE END OF POSTS AND TWIST, OR ROTATE, AT LEAST 180 DEGREES; B) HOOK THE END OF EACH SILT FENCE LENGTH.

3 SECTION OF TEMP. TRACKING PAD
N.T.S.



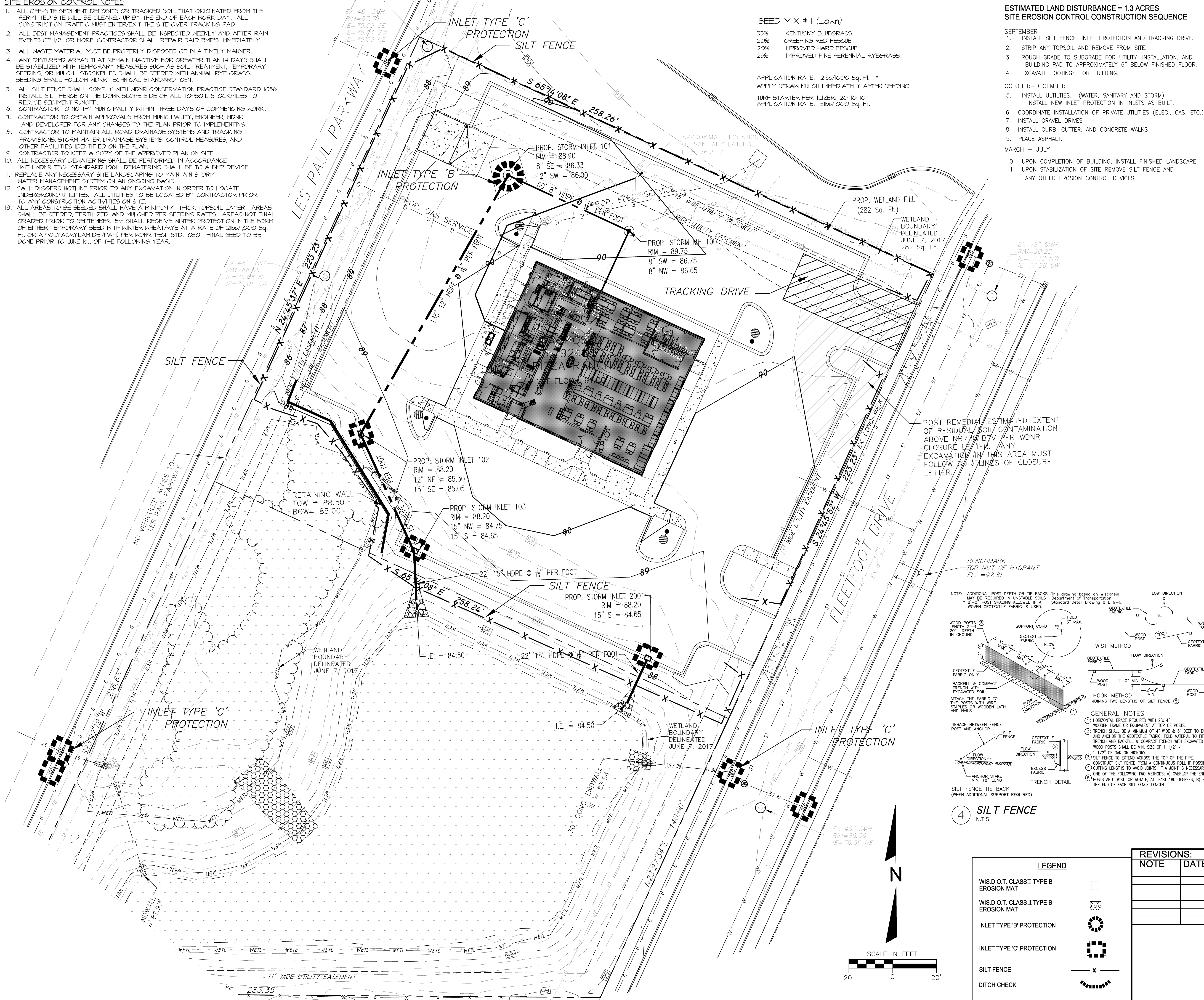
4 SILT FENCE
N.T.S.

LEGEND

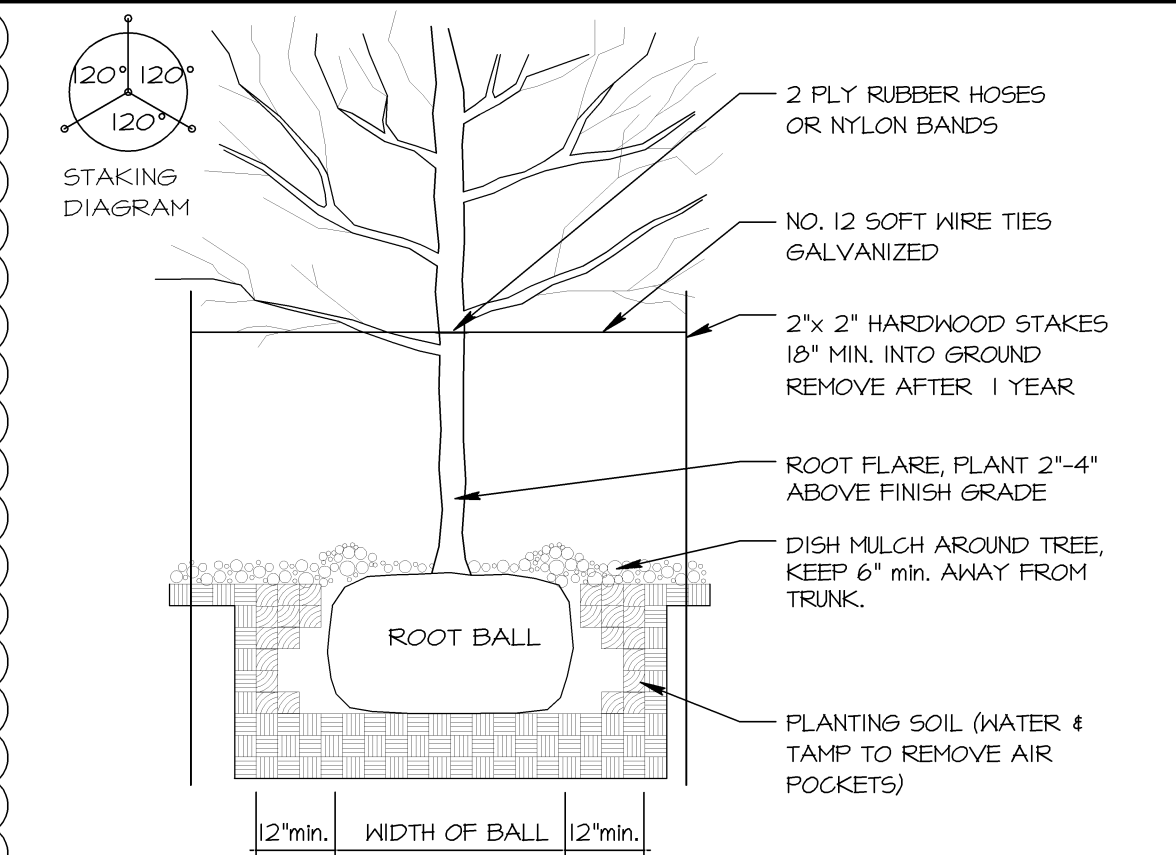
- WIS.D.O.T. CLASS I TYPE B EROSION MAT
- WIS.D.O.T. CLASS II TYPE B EROSION MAT
- INLET TYPE 'B' PROTECTION
- INLET TYPE 'C' PROTECTION
- SILT FENCE
- DITCH CHECK

REVISIONS:	NOTE	DATE

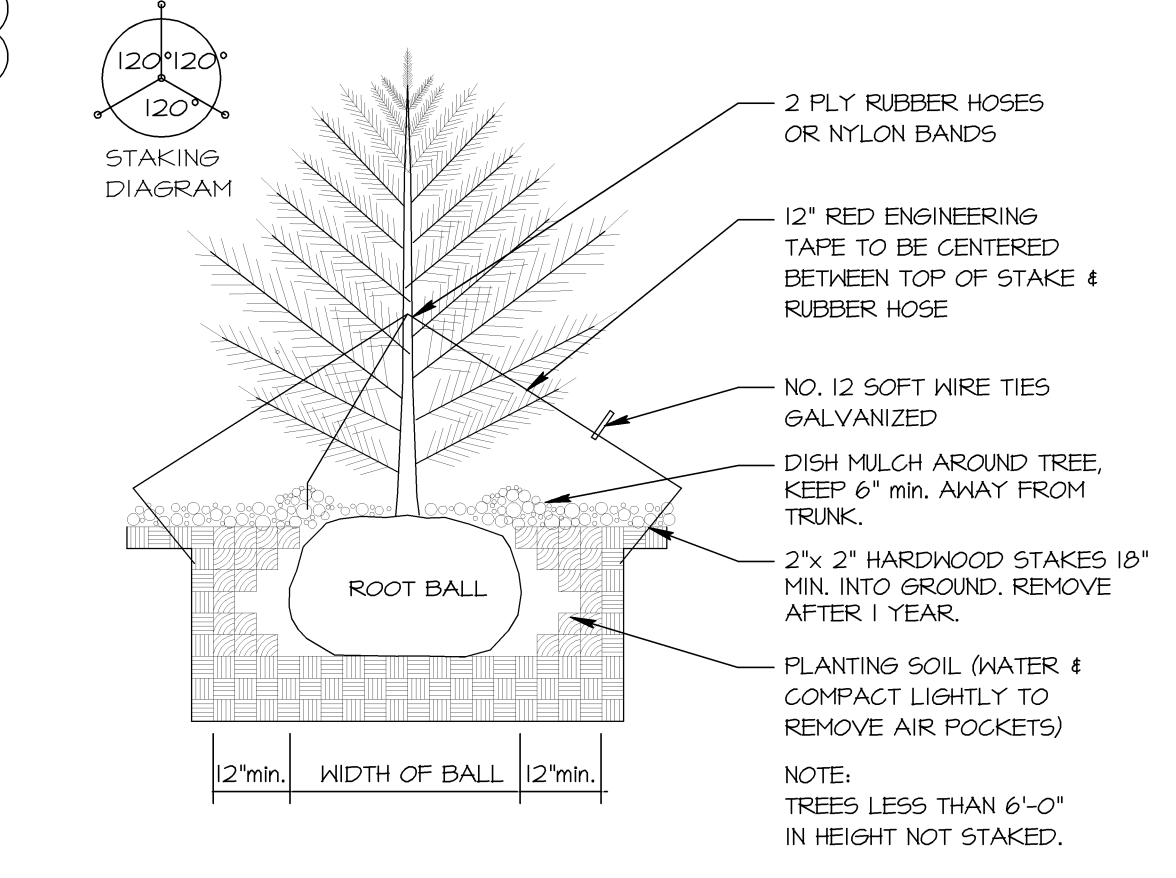
TDI ASSOCIATES, INC All Rights Reserved N8 W2290 JOHNSON DRIVE, SUITE B4 WAUKESHA, WISCONSIN 53186 PHONE 262-409-2530 FAX 262-409-2531		OWNERSHIP OF DOCUMENTS This document and the ideas and design incorporated herein, as an instrument of professional service, is the sole property of TDI Associates, Inc. and is not to be used, copied or part for any other project or purpose without the expressed written authorization of TDI Associates, Inc.
TDI ASSOCIATES, INC. ARCHITECTURE, ENGINEERING, PLANNING		
CITY OF WAUKESHA, WI PROJECT NAME		
SITE EROSION CONTROL PLAN		
SCALE: 1"= 20'-0"	JOB NO: 15-383.000	DATE: 08-02-17
DESIGNED BY: ROB	DRAWN BY: ROB	CHECKED BY:
APPROVED BY:	ENGINEER	DATE
		SHEET C-4.0



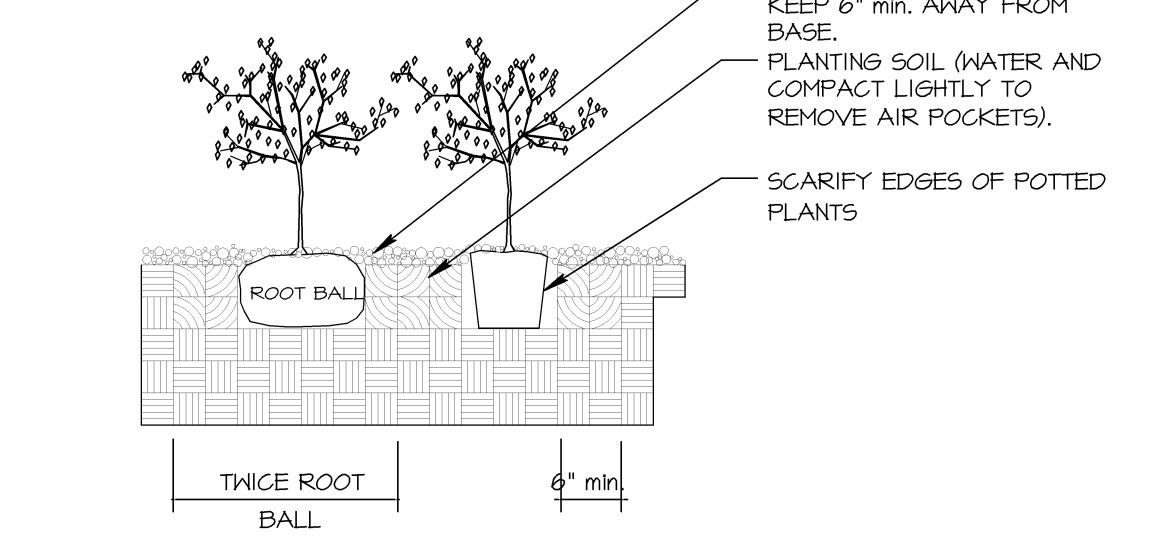
PLANT SCHEDULE (CONTRACTOR RESPONSIBLE FOR VERIFYING PLANT QUANTITIES)							
QUANTITY	SYMBOL	BOTANICAL NAME	COMMON NAME	MATURE SIZE	PLANTING SIZE	TYPE	
4	GT	Gleditsia triacanthos 'Impicola'	Imperial Honeylocust	35'-40'	B / B	2 1/2"	Shade Tree
2	TA	Tilia americana 'Redmond'	Redmond Linden	35'-40'	B / B	2 1/2"	Shade Tree
3	AS	Amelanchier x grandiflora 'Princess Diana'	Princess Diana Serviceberry	15'-20'	B / B	2"	Ornamental Tree
3	SR	Syringa reticulata 'Ivory Silk'	Ivory Silk Tree Lilac	15'-20'	B / B	1.5H	Ornamental Tree
1	PN	Pinus nigra 'Compacta'	Compact Austrian Pine	15' x 8'	B / B	4'	Evergreen Tree
6	TO	Thuja occidentalis 'Holmsstrup'	Holmsstrup Arborvitae	10' x 5'	B / B	5'	Evergreen Tree
5	AM	Aronia melanocarpa 'Viking'	Viking Black Chokeberry	3'-5'	POT	24"	Deciduous Shrub
5	BT	Berberis thunbergii 'Orange Rocket'	Orange Rocket Barberry	3'-5'	POT	18"	Deciduous Shrub
8	HA	Hydrangea arborescens 'Annabelle'	Annabelle Hydrangea	3'-5'	POT	18"	Deciduous Shrub
4	RA	Ribes alpinum	Alpine Currant	3'-4'	POT	18"	Deciduous Shrub
16	RR	Rosa rugosa 'Dwarf Pavement'	Dwarf Pavement	2'-3'	POT	2 gal	Deciduous Shrub
54	SG	Spiraea x 'Goldflame'	Goldflame Spirea	3'-4'	POT	2 gal	Deciduous Shrub
4	JH	Juniperus horizontalis 'Blue Chip'	Blue Chip Juniper	1' x 4'	POT	2 gal	Evergreen Shrub
35	J5	Juniperus horizontalis 'Broadmoor'	Broadmoor Juniper	2' x 4'	POT	5 gal	Evergreen Shrub
31	TM	Taxus x media 'Rynjan'	Rynjan Yew	3' x 5'	POT	18"	Evergreen Shrub
34	CA	Calamagrostis acutiflora 'Karl Foerster'	Karl Foerster Grass	42"-48"	POT	1 gal	Ornamental Grass
46	HS	Hemerocallis x 'Stella D'oro'	Stella D'oro Daylily	18"-24"	POT	4 1/2"	Perennial



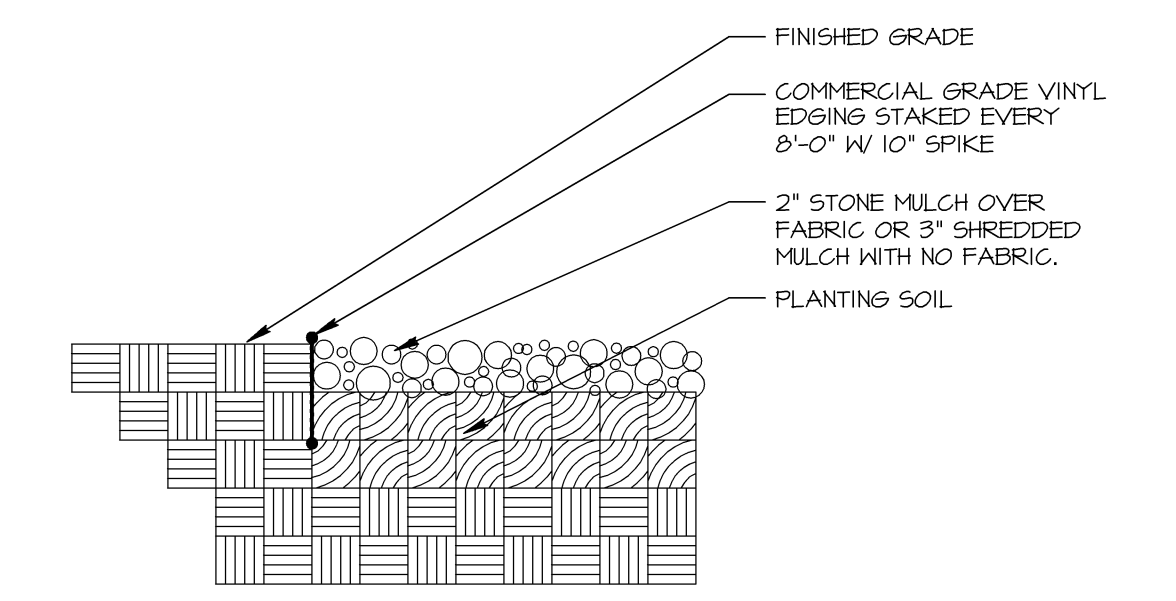
1 DECIDUOUS TREE
N.T.S.



2 CONIFEROUS TREE
N.T.S.



3 SHRUB PLANTING
N.T.S.



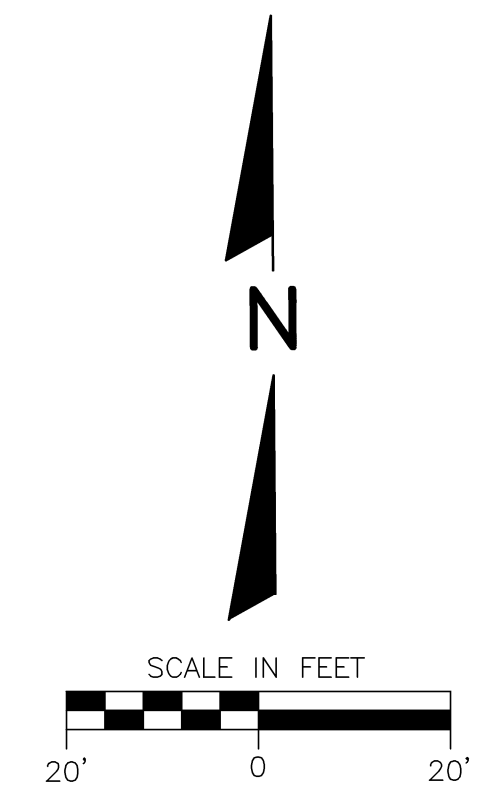
4 PLANTING EDGE
N.T.S.

GENERAL NOTES:

- 1.) ALL FINISHED GRADES TO BE 1" BELOW TOP OF CURBS OR PAVEMENT.
- 2.) BACKFILL AND GRADE ALL PLANTING AREAS WITH MIN. 12" BLENDED TOPSOIL.
- 3.) ALL LAWN AREAS TO BE SEED UNLESS OTHERWISE NOTED.
- 4.) ALL PLANT MATERIAL SHALL CONFORM TO AMERICAN STANDARD FOR NURSERY STOCK.
- 5.) ALL TREES NOT IN A PLANTING BED SHALL BE MULCHED WITH A MINIMUM 1' RADIUS FOR EACH 1 INCH CALIPER. USE SHREDDED HARDWOOD MULCH AT 2" DEPTH.
- 6.) PROVIDE MIN. 2 YEAR WARRANTY ON ALL PLANT MATERIAL.
- 7.) ALL PLANTING BEDS TO BE EDGED WITH COMMERCIAL GRADE PLASTIC EDGING.
- 8.) ALL PLANTING BEDS TO BE MULCHED AT 2" DEPTH WITH HARDWOOD MULCH

SEED MIX #1 (Lawn)
 35% KENTUCKY BLUEGRASS
 20% CREEPING RED FESCUE
 20% IMPROVED HARD FESCUE
 25% IMPROVED FINE PERENNIAL RYEGRASS

APPLICATION RATE: 2lbs/1000 Sq. Ft. *
 APPLY STRAW MULCH IMMEDIATELY AFTER SEEDING
 TURF STARTER FERTILIZER: 20-10-10
 APPLICATION RATE: 5lbs/1000 Sq. Ft.



REVISIONS: NOTE DATE REV #1 08-02-17		TDI ASSOCIATES, INC All Rights Reserved N8 W2290 JOHNSON DRIVE, SUITE B4 WAUKESHA, WISCONSIN 53186 PHONE 262-409-2530 FAX 262-409-2531	<p>OWNERSHIP OF DOCUMENTS This document and the ideas and design incorporated herein, as an instrument of professional service, is the sole property of TDI Associates, Inc., and it will be held in trust for the client for any other project or purpose without the expressed written authorization of TDI Associates, Inc.</p>
CITY OF WAUKESHA, WI PIZZA RANCH #8610 - FLEETWOOD DRIVE SITE LANDSCAPE PLAN			
SCALE: 1"= 20'-0"	JOB NO: 15-383.000	DATE: 07-19-17	
DESIGNED BY: ROB	DRAWN BY: ROB	CHECKED BY:	
APPROVED BY:	ENGINEER	DATE	SHEET L-1.0

