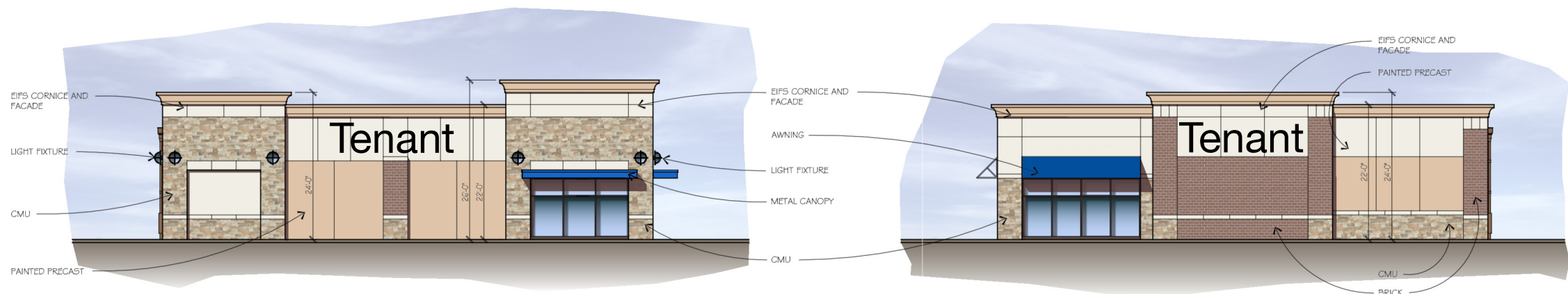
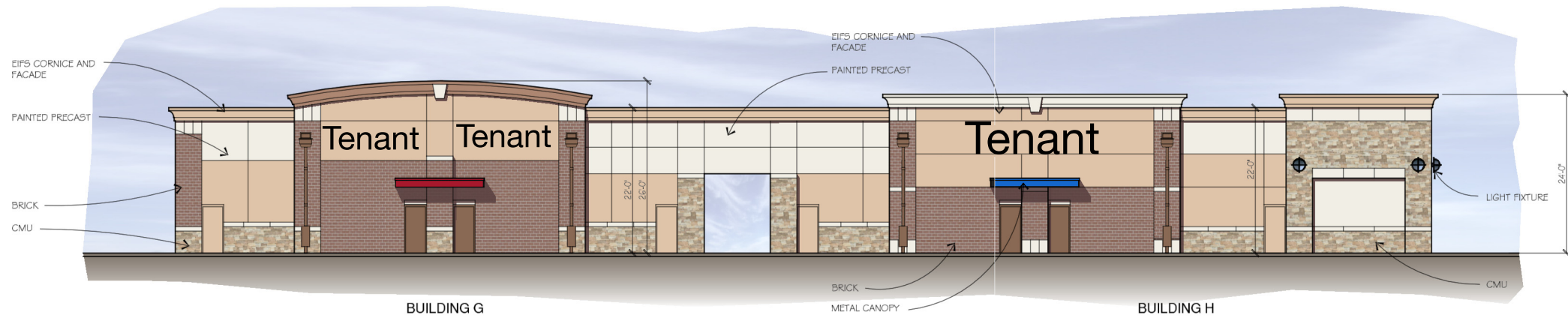


**EAST ELEVATION**  
SCALE: 3/32"=1'-0"  
A4.5



**BUILDING H SOUTH ELEVATION**  
SCALE: 3/32"=1'-0"  
A4.5

**BUILDING G NORTH ELEVATION**  
SCALE: 3/32"=1'-0"  
A4.5



**WEST ELEVATION**  
SCALE: 3/32"=1'-0"  
A4.5



**KEY PLAN**  
SCALE: NTS

**BUILDINGS G AND H ELEVATIONS :**  
**SHOPPES AT FOX RIVER**  
WAUKESHA, WISCONSIN

**OWNER/DEVELOPER**  
RAMCO-GERSHENSON INC.  
31500 NORTHWESTERN HWY. SUITE 300  
FARMINGTON HILLS, MICHIGAN 48334

**ISSUED :**  
OWNER REVIEW  
3-4-14  
OWNER REVIEW  
3-6-14



**WAH YEE ASSOCIATES**  
ARCHITECTS & PLANNERS  
37911 WEST TWELVE MILE ROAD  
FARMINGTON HILLS, MICHIGAN 48331  
PHONE 248.489.9160 FAX 489.0133  
PROJECT NO. 4761

All ideas, designs, arrangements, and plans indicated or represented by this drawing are owned by and the property of Wah Yee Associates and were created, evolved and developed for use on and in connection with the specified project. None of such ideas, arrangements, or plans shall be used by or disclosed to any person, firm or corporation for any purpose whatsoever without the written permission of Wah Yee Associates.

**PRELIMINARY**  
NOT FOR  
CONSTRUCTION  
A 4.5