

## FEATURES & SPECIFICATIONS

**INTENDED USE** — Round tapered aluminum general purpose pole for up to 50 foot mounting heights.

**CONSTRUCTION** — Spun-tapered seamless 6063 alloy aluminum tubing, heat-treated to produce a T6 temper. Circumferential satin-brushed finish. The shaft is cone-tapered to the butt diameter.

**Anchor base:** Cast from A356 alloy aluminum, the anchor base is heat-treated to a T6 condition. The anchor base telescopes the pole shaft and is circumferentially welded top and bottom. The anchor bases is provided with slotted holes.

**Hand hole:** A nominal 3" x 5" or 4" x 6" reinforced flush-covered handhole is centered 18" above the base.

**Hardware:** Stainless steel.

**Top cap:** Removable top cap provided with drill-mount poles.

**Bolt covers:** A356 nut covers are included with anchor base unless otherwise specified. 3RTA poles include spun aluminum base cover.

**Finish:** Must specify finish.

**Grounding:** Provision located inside hand hole rim. Grounding hardware is not included (provided by others).

**Anchor bolts:** Made of steel rod having a minimum yield strength of 55,000 psi. Top portion of anchor blot is galvanized per ASTM A-153. Each anchor bolt is furnished with two hex nuts and two flat washers.

**Note:** Specifications subject to change without notice.

Actual performance may differ as a result of end-user environment and application.

Catalog Number
Notes
Type



**Anchor Base Poles**

# RTA/3RTA

**ROUND TAPERED ALUMINUM  
3-BOLT ROUND TAPERED ALUMINUM**

### ORDERING INFORMATION

Lead times will vary depending on options selected. Consult with your sales representative.

**Example:** RTA 25 6E DM19 BA

RTA					
Series	Nominal fixture mounting height	Nominal shaft base size/wall thickness	Mounting <sup>1</sup>	Options	Finish <sup>12</sup>
RTA 3RTA	20 – 50 feet (See back page.)	(See back page.)	<u>Tenon mounting</u> PT Open top T20 2-3/8" O.D. (2" NPS) T25 2-7/8" O.D. (2-1/2" NPS) T30 3-1/2" O.D. (3" NPS) <sup>2</sup> T35 4" O.D. (3-1/2" NPS) <sup>2,3</sup> <u>Drill mounting<sup>4,9</sup></u> DM19 1 at 90° DM28 2 at 180° DM28PL 2 at 180° with one side plugged DM29 2 at 90° DM32 2 at 120° DM39 3 at 90° DM49 4 at 90° <u>CSX/DSX/AERIS™/OMERO™ Drill mounting<sup>4</sup></u> DM19AS 1 at 90° DM28AS 2 at 180° DM29AS 2 at 90° DM32AS 3 at 120° DM39AS 3 at 90° DM49AS 4 at 90° <u>AERIS™ Suspend drill mounting<sup>4,8</sup></u> DMxxAST_ <u>OMERO™ Suspend drill mounting<sup>4,8</sup></u> DMxxMRT_	<u>Shipped installed</u> L/AB Less anchor bolts FBC Full base cover VD Vibration damper TP Tamper proof H1-18Axx Horizontal arm bracket (1 fixture) <sup>5,6</sup> FDLxx Festoon outlet less electrical <sup>5</sup> CPL12xx 1/2" coupling <sup>5</sup> CPL34xx 3/4" coupling <sup>5</sup> CPL1xx 1" coupling <sup>5</sup> NPL12xx 1/2" threaded nipple <sup>5</sup> NPL34xx 3/4" threaded nipple <sup>5</sup> NPL1xx 1" threaded nipple <sup>5</sup> EHHxx Extra handhole <sup>5,7</sup> MAEX Match existing <sup>10</sup> USPOM United States point of manufacture <sup>11</sup>	<u>Standard colors</u> DDB Dark bronze DWH White DBL Black DMB Medium bronze DNA Natural aluminum BA Brushed aluminum <u>Classic colors</u> DSS Sandstone DGC Charcoal gray DTG Tennis green DBR Bright red DSB Steel blue <u>Class 1 architectural anodized</u> ABL Black ADB Dark bronze ANA Natural <u>Architectural colors (powder finish)<sup>12</sup></u>

**NOTES:**

- When ordering tenon mounting and drill mounting for the same pole, follow this example: DM28/T20. The combination includes a required extra handhole.
- N/A with 4C, 5C, 5E and 5G because pole top is too small.
- N/A with 6E, 6G and 7E because pole top is too small.
- The drilling template to be used for a particular luminaire depends on the luminaire that is used. Refer to the Technical Data Section on [www.lithonia.com](http://www.lithonia.com) for Drilling Templates.
- Specify location and orientation when ordering option.  
For 1st x specify the height in feet above base of pole.  
Example: 5ft = 5 and 20ft = 20  
For 2nd x, specify orientation from handhole (A,B,C,D)  
Refer to the Handhole Orientation diagram on page 577 in PSG9.
- Horizontal arm is 18" x 2-3/8" O.D. standard.
- Combination of tenon-top and drill mount includes extra handhole.
- Insert "1" or "2" to designate fixture size; e.g. DM19AST2.
- First drilling on 3RTA poles is located directly above anchor bolt axis.
- Must add original order number.
- Use when mill certifications are required.
- Finish must be specified. Additional colors available; see [www.lithonia.com/archcolors](http://www.lithonia.com/archcolors) or Architectural Colors brochure (Form No. 794.3).

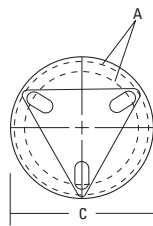
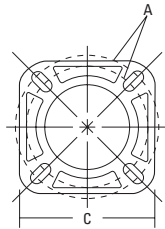
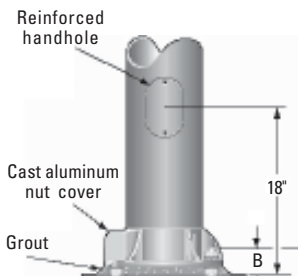
**IMPORTANT INSTALLATION NOTES:**

- Do not** erect poles without having fixtures installed.
- Factory-supplied templates must be used when setting anchor bolts. Lithonia will not accept claim for incorrect anchorage placement due to failure to use factory template.
- If poles are stored outside, all protective wrapping must be removed immediately upon delivery to prevent finish damage.
- Lithonia Lighting is not responsible for the foundation design.

# RTA Round Tapered Aluminum Poles

## TECHNICAL INFORMATION

Catalog Number	Nominal shaft length (ft.)	Wall pole shaft size (in. x in. x ft.)	Thickness (in.)	EPA (ft <sup>2</sup> ) with 1.3 gust			Max. weight	Bolt circle (in.)	Bolt size (in. x in. x in.)	Approximate ship weight (pounds)
				80 mph	90 mph	100 mph				
RTA 20 5C	20	5 x 3 x 19.66	0.125	3.9	2.5	1.6	100	7.5-9.5	.75 x 18 x 3	62
RTA 20 5G	20	5 x 3 x 19.66	0.188	7.4	5.2	3.8	100	7.5-9.5	.75 x 18 x 3	72
RTA 20 6G	20	6 x 4 x 19.66	0.188	12.2	9.2	7.2	214	9-10	.75 x 30 x 3	107
RTA 20 7E	20	7 x 4 x 19.66	0.156	15.0	11.4	9.0	256	9.875-11.25	1 x 36 x 4	103
RTA 25 6E	25	6 x 4 x 24.66	0.156	5.3	3.6	2.6	114	9-10	.75 x 30 x 3	106
RTA 25 7E	25	7 x 4 x 24.66	0.156	9.5	7.0	5.4	162	9.875-11.25	1 x 36 x 4	120
RTA 25 8E	25	8 x 4.5 x 24.66	0.156	14.2	10.9	8.5	220	11-12	1 x 36 x 4	130
RTA 25 8G	25	8 x 4.5 x 24.66	0.188	18.0	13.8	10.9	261	11-12	1 x 36 x 4	153
RTA 30 7E	30	7 x 4 x 29.66	0.156	5.5	3.8	2.7	111	9.875-11.25	1 x 36 x 4	135
RTA 30 8E	30	8 x 4.5 x 29.66	0.156	9.4	7.0	5.3	151	11-12	1 x 36 x 4	150
RTA 30 8G	30	8 x 4.5 x 29.66	0.188	12.4	9.4	7.3	179	11-12	1 x 36 x 4	175
RTA 30 10G	30	10 x 6 x 29.66	0.188	23.8	18.3	14.3	377	14-15	1 x 40 x 4	235
RTA 35 8E	35	8 x 4.5 x 34.66	0.156	5.8	4.1	2.9	119	11-12	1 x 36 x 4	185
RTA 35 8G	35	8 x 4.5 x 34.66	0.188	8.3	6.0	4.5	141	11-12	1 x 36 x 4	220
RTA 35 8J	35	8 x 4.5 x 34.66	0.250	12.9	9.7	7.5	183	11-12	1 x 36 x 4	251
RTA 35 10G	35	10 x 6 x 34.66	0.188	17.9	13.6	10.4	295	14-15	1 x 40 x 4	268
RTA 39 8G	39	8 x 4.5 x 38.66	0.188	5.6	3.9	2.7	122	11-12	1 x 36 x 4	250
RTA 39 8J	39	8 x 4.5 x 38.66	0.250	9.7	7.1	5.4	158	11-12	1 x 36 x 4	280
RTA 39 10G	39	10 x 6 x 38.66	0.188	14.2	10.5	7.8	253	14-15	1 x 40 x 4	295
RTA 39 10J	39	10 x 6 x 38.66	0.250	20.4	15.5	11.9	300	14-15	1.25 x 48 x 5	373
RTA 50 10J	50	10 x 6 x 49.66	0.250	12.5	9.1	6.5	300	14-15	1.25 x 48 x 5	447
3RTA 8 4C	8	4 x 3 x 8	0.125	12.1	9.3	7.3	75	6.5-7.25	.75 x 18 x 3	23
3RTA 10 4C	10	4 x 3 x 10	0.125	8.8	6.7	5.2	75	6.5-7.25	.75 x 18 x 3	27
3RTA 12 4C	12	4 x 3 x 12	0.125	6.6	4.8	3.6	75	6.5-7.25	.75 x 18 x 3	31
3RTA 14 4C	14	4 x 3 x 14	0.125	4.9	3.4	2.4	75	6.5-7.25	.75 x 18 x 3	34
3RTA 16 4C	16	4 x 3 x 16	0.125	3.5	2.3	1.5	75	6.5-7.25	.75 x 18 x 3	38
3RTA 16 5C	16	5 x 3 x 16	0.125	6.9	5.0	3.8	75	7.5-8.5	.75 x 18 x 3	43
3RTA 18 5C	18	5 x 3 x 18	0.125	5.0	3.5	2.5	150	7.5-8.5	.75 x 18 x 3	47
3RTA 18 5E	18	5 x 3 x 18	0.156	7.0	5.0	3.7	150	7.5-8.5	.75 x 18 x 3	57
3RTA 20 5C	20	5 x 3 x 20	0.125	3.8	2.5	1.6	150	7.5-8.5	.75 x 18 x 3	50
3RTA 20 5E	20	5 x 3 x 20	0.156	5.5	3.8	2.6	150	7.5-8.5	.75 x 18 x 3	62



**IMPORTANT:**  
These specifications are intended for general purposes only. Lithonia reserves the right to change material or design, without prior notice, in a continuing effort to upgrade its products.

Pole Data						
	Shaft base size	Bolt circle A	Bolt projection B	Base square C	Template number	Anchor bolt description
4-Bolt Base	5"	7.50"-9.50"	3.25"	9.25"	ABTEMPLATE PJ50032	AB18-0
	6"	9"-10"	3.50"	10"	ABTEMPLATE PJ50033	AB30-0
	7"	9.875"-11.25"	4.125"	10.50"	ABTEMPLATE PJ50034	AB36-0
	8"	11-12"	4.25"	11.50"	ABTEMPLATE PJ50035	AB36-0
	10"G	14"-15"	4.50"	14.50"	ABTEMPLATE PJ50036	AB40-0
	10"J	14"-15"	5.00"	14.50"	ABTEMPLATE PJ50063	AB48-0
3-Bolt Base	4"	6.50"-7.25"	3.25"	8.875"	ABTEMPLATE PJ50128	AB18-0
	5"	7.50"-8.50"	3.25"	10.25"	ABTEMPLATE PJ50129	AB18-0



POLE-RTA-3RTA