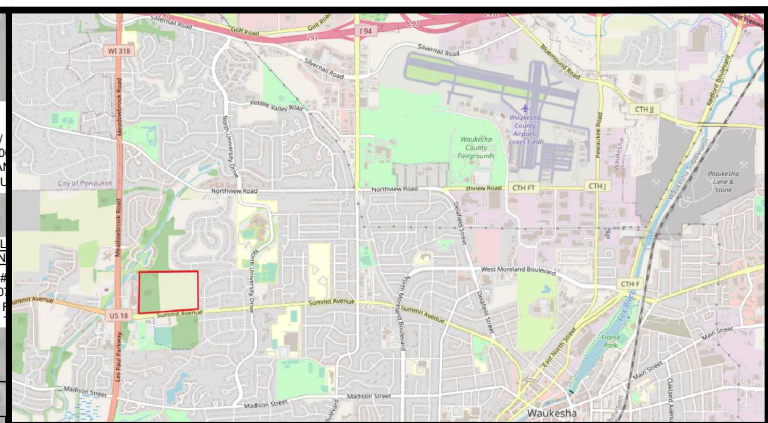
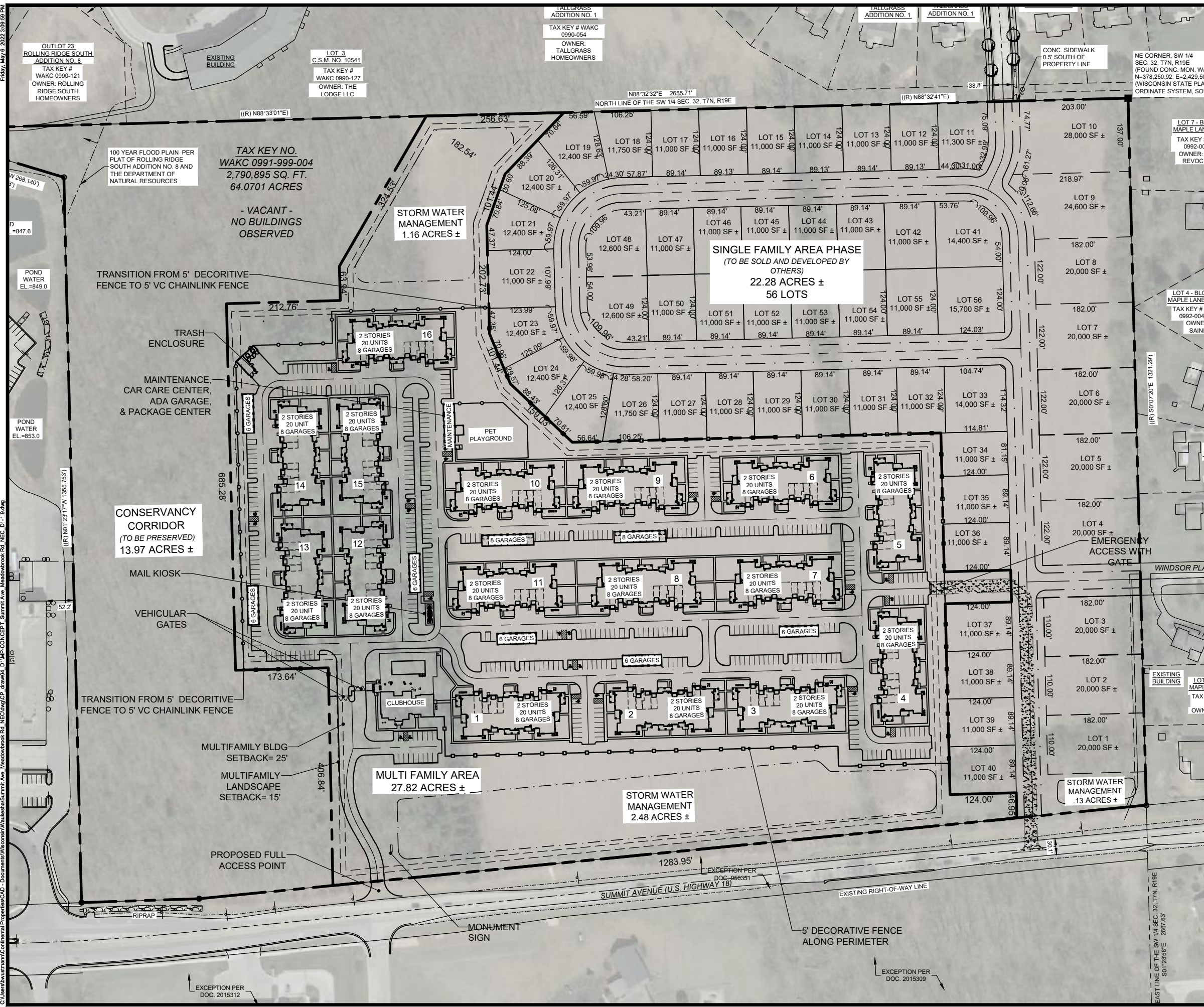


Friday, May 6, 2022 3:09:58 PM
C:\Users\schwamm\OneDrive\Documents\Continental Properties\CAD - Documents\Wisconsin\Waukesha\Summit Ave Meadowbrook Rd NECC-Dr-18.dwg



VICINITY MAP
SCALE: NTS

CONTINENTAL PROPERTIES
W134 N8675 EXECUTIVE PARKWAY
MENOMONEE FALLS, WI 53051
262.502.5500 * FAX 262.502.5522
ON BEHALF OF
CONTINENTAL 665 FUND LLC

SITE INFORMATION		
MULTIFAMILY AREA	27.82 ACRES	
ENVIRONMENTAL CORRIDOR	13.97 ACRES	
SINGLE FAMILY AREA (54 LOTS)	22.28 ACRES	
TOTAL AREA	64.07 ACRES	
MULTIFAMILY DENSITY	11.50 DU/ACRE	
SINGLE FAMILY DENSITY	2.42 DU/ACRE	
BUILDING / LANDSCAPE SETBACKS	NORTH 25'/15'	
	SOUTH 25'/15'	
	EAST 25'/15'	
	WEST 25'/15'	
RESIDENT BUILDING INFORMATION		
RESIDENT BUILDINGS	QUANTITY	HEIGHT
20 UNIT RESIDENTIAL BUILDING	16	2-STORY / 32'
TOTAL RESIDENT BUILDINGS	16	
GENERAL HOME MIX		
STUDIO	32	10%
1-BEDROOM	128	40%
2-BEDROOM	128	40%
3-BEDROOM	32	10%
TOTAL HOMES	320	100%
RESIDENT PARKING INFORMATION		
TOTAL PARKING PROVIDED	582	
GARAGE PARKING	181	
ATTACHED GARAGES	128	
DETACHED GARAGES	52	
SURFACE PARKING	401	
PARKING REQUIRED PER CITY CODE	544	
HOME PARKING RATIO	1.82	
ADDITIONAL PARKING INFORMATION		
CLUBHOUSE PARKING	15	
ADA PARKING	21	
GUEST PARKING	30	
SITEWIDE PARKING INFORMATION		
PARKING DIMENSIONS	PERP - 9' X 18'	
STANDARD STALL	PERP - 9' X 18'	
ADA STALL	PERP - 9' X 18'	
DRIVE WIDTH	24'	
SITE AMENITIES		
AMENITY	QTY / SF / NOTES	
SWIMMING POOL	INCLUDED	
FITNESS CENTER	INCLUDED	
CAR CARE CENTER	INCLUDED	
PET PLAYGROUND TYPE A	13,200 SF	
ENCLOSED YARDS	24	
PARCEL PICKUP	INCLUDED	
GRILLING AREA	INCLUDED	
CITY OF WAUKESHA PARKING REQUIREMENTS PER MUNICIPAL CODE 22.53.8		
TYPE OF UNIT	# OF SPACES PER UNIT	# OF UNITS IN DEVELOPMENT / # OF REQUIRED SPACES
STUDIO	1	32 / 32
1 BEDROOM	NUMBER OF 1 BEDROOMS DIVIDED BY 2, MULTIPLY RESULT BY 3	128 / 192
2 BEDROOM	2	128 / 256
3 BEDROOM	2	32 / 64
TOTAL PARKING SPACES REQUIRED		544

CONTINENTAL 665 FUND LLC
SUMMIT AVENUE | WAUKESHA, WI
CONTINENTAL 665 FUND LLC

CONTINENTAL PROPERTIES
W134 N8675 EXECUTIVE PARKWAY
MENOMONEE FALLS, WI 53051
262.502.5500 * FAX 262.502.5522
ON BEHALF OF
CONTINENTAL 665 FUND LLC

PROJECT INFORMATION

SPRINGS AT MEADOWBROOK
SUMMIT AVENUE | WAUKESHA, WI
CONTINENTAL 665 FUND LLC

SHEET INFORMATION

CONCEPT PLAN
DRAWN DATE: 05/06/2022
DRAWN BY: BMW

SHEET NUMBER

CP-1.9

