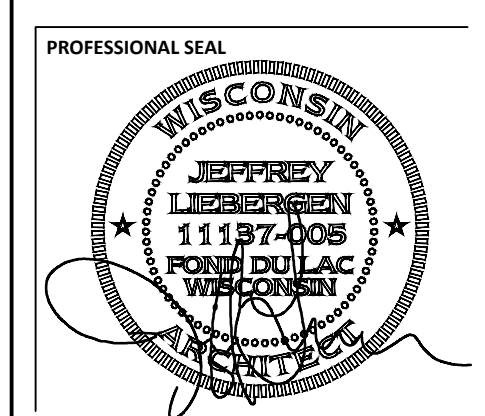


PROJECT INFORMATION

NEW HOTEL FOR:
COBBLESTONE HOTEL AND SUITES
WISCONSIN AVE & N GRAND AVE. • WAUKESHA, WI



SHEET DATES

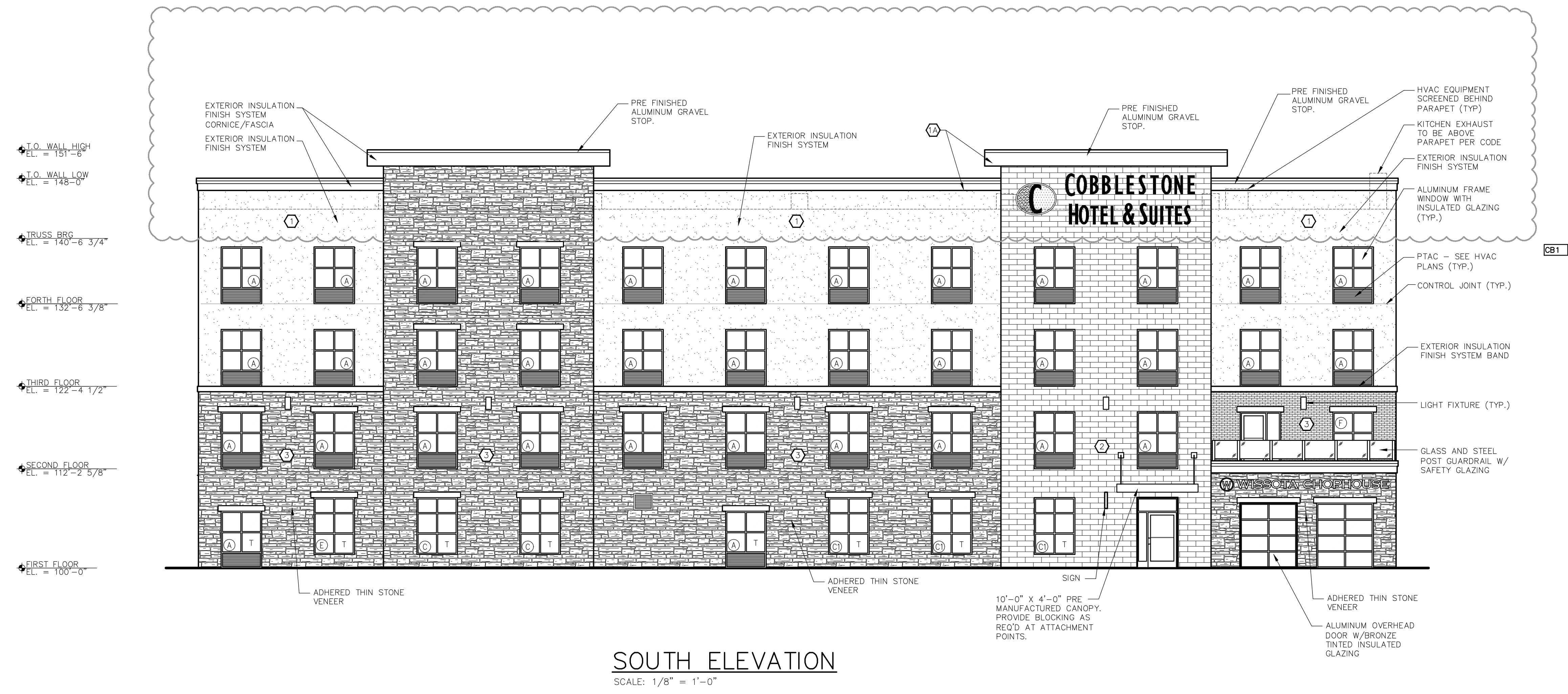
ISSUE DATE OCT. 13, 2023

REVISIONS
CB1 OCT. 31, 2023

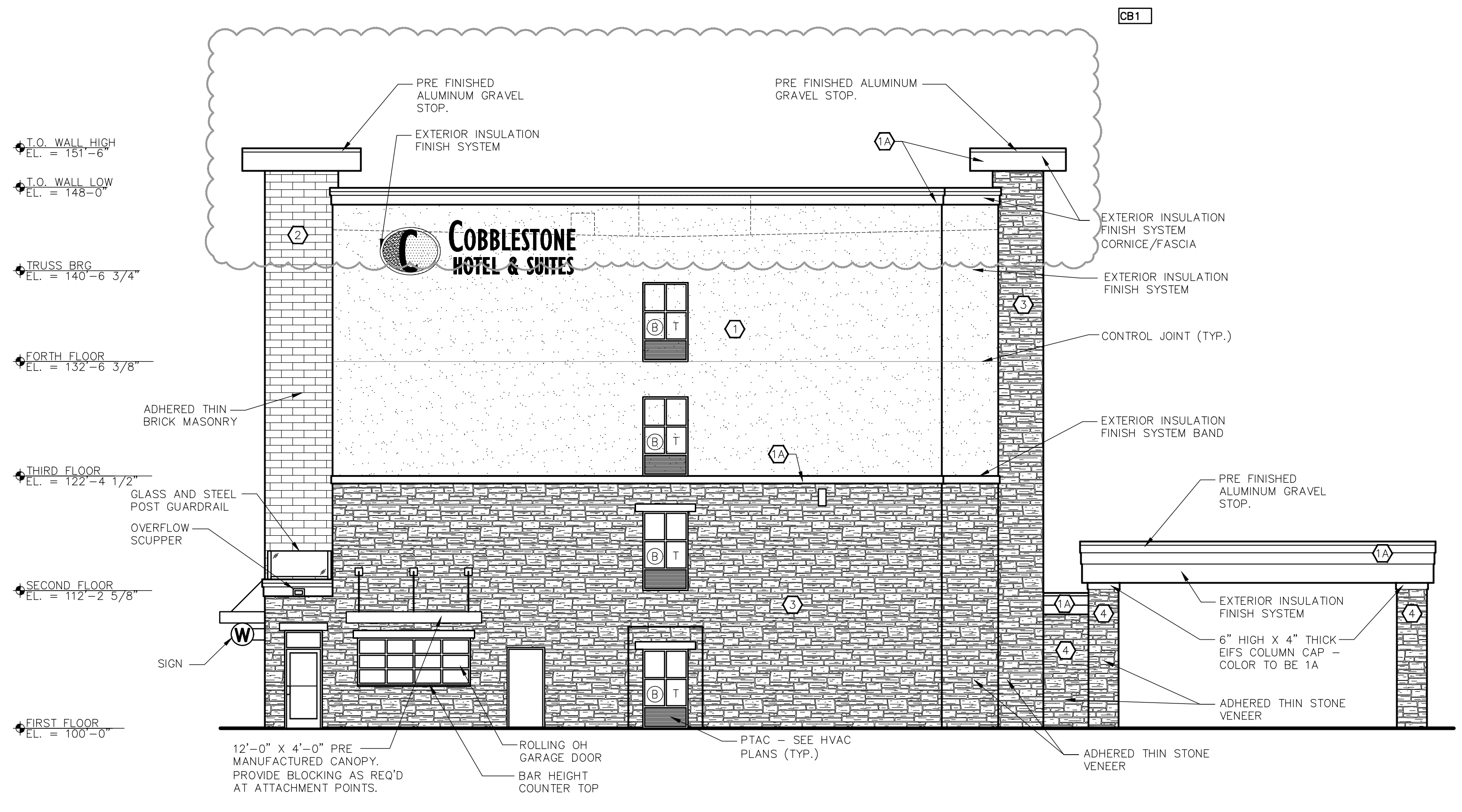
NO.	DATE	REVISION

JOB NUMBER
2269000

SHEET NUMBER
A2.0



SOUTH ELEVATION
SCALE: 1/8" = 1'-0"



EAST ELEVATION
SCALE: 1/8" = 1'-0"

EXTERIOR COLORS		
EIFS COLOR #1	1	TOTAL WALL, NATURAL SILK #2060
EIFS COLOR #2	2A	TOTAL WALL, CUSTOM DARK BROWN TO MATCH ROOF COPING
BILTMORE	2	BILTMORE - SAND
NOT USED	3	TBD
STONE	4	ADHERED STONE VENEER CENTURION 'CATHEDRAL STONE' COLOR: PLAIN
STONE	5	DESIGNER SERIES - KENTUCKY

NOTE: #5 STONE ONLY APPEARS ON PATIO FIREPLACE AND INSIDE RESTAURANT. SEE A4.4 AND A9.0 FOR DETAILS.

WINDOW SCHEDULE			
SYM.	MAT'L	DESCRIPTION	ROUGH OPENING UNIT SIZE W/HT.
A	ALUMINUM	FIXED WINDOW	UNIT: (1) 5'-0" X 5'-0" + PTAC GRILLE
B	ALUMINUM	FIXED WINDOW	UNIT: (1) 4'-0" X 5'-0" + PTAC GRILLE
B2	ALUMINUM	FIXED WINDOW	UNIT: (1) 4'-0" X 5'-0" NO PTAC GRILLE
C	ALUMINUM	FIXED WINDOW	UNIT: (1) 5'-0" X 7'-0" NO PTAC GRILLE
C	ALUMINUM	FIXED WINDOW W/ BRONZE TINTED GLAZING	UNIT: (1) 5'-0" X 7'-0" NO PTAC GRILLE
D	ALUMINUM	FIXED WINDOW	UNIT: (1) 4'-0" X 7'-0" NO PTAC GRILLE
E	NOT USED	NOT USED	NOT USED
F	ALUMINUM	FIXED WINDOW	UNIT: (1) 5'-0" X 5'-0" NO PTAC GRILLE

- PER IBC 2406.3.6 SAFETY GLAZING ADJACENT TO A DOOR WHERE THE NEAREST EXPOSED EDGE OF THE GLAZING IS WITHIN 24"
- WINDOW MANUFACTURER SHALL REVIEW WINDOW LOCATIONS AND PROVIDE SAFETY GLAZING IN ALL LOCATIONS REQUIRED BY IBC CHAPTER 24.
- WINDOW COLOR: QUAKER TRADITIONAL SERIES T200, DARK BRONZE (TYP.)