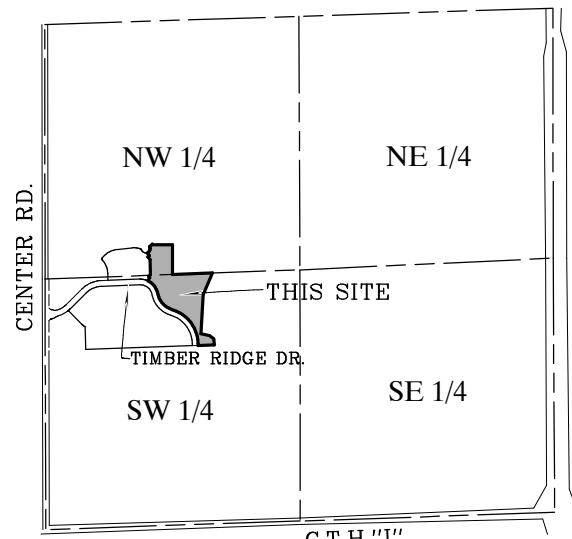


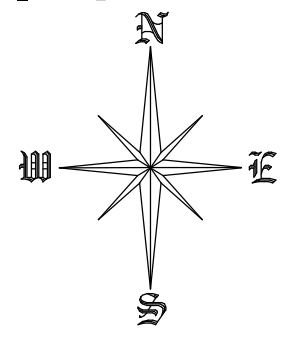
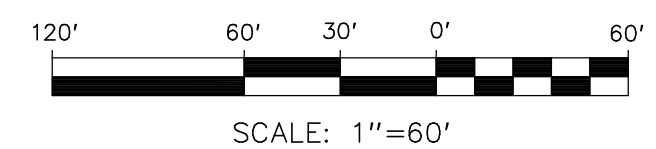
LOCALITY MAP



SEC. 22-6-19
1"=2000'

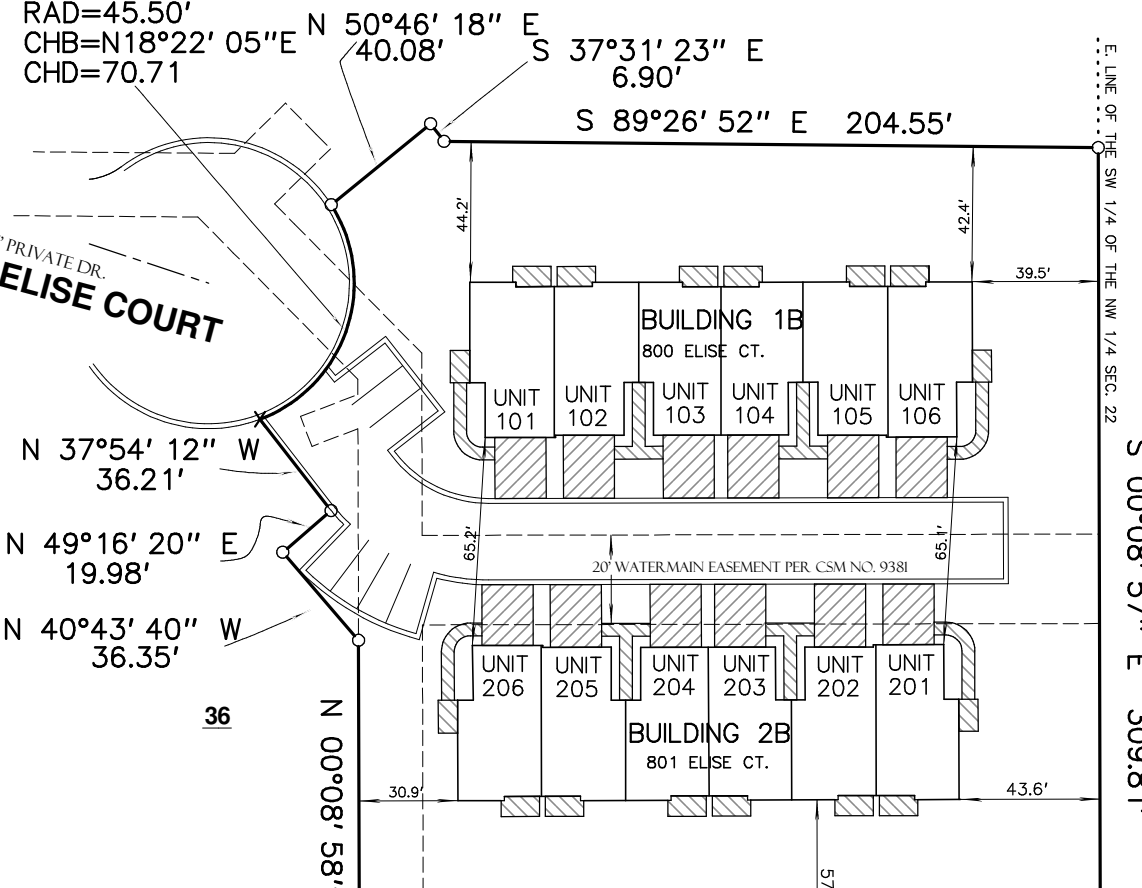
- INDICATES LIMITED COMMON ELEMENTS
STOOPS PATIOS AND WALKWAYS
- INDICATES LIMITED COMMON ELEMENTS
DRIVE APRONS, APPROXIMATE LOCATIONS SHOWN
- - INDICATES IRON PIPE FOUND
- - INDICATES 3/4" X 18" IRON ROD FOUND
- X - INDICATES CHISELED (X) ON CONCRETE FOUND

VILLAS AT TIMBER RIDGE CONDOMINIUM ADDENDUM NO. 1 WAUKESHA COUNTY, WISCONSIN.



ARC=80.98
RAD=45.50'
CHB=N18°22' 05"E
CHD=70.71

GARDEN HOMES AT TIMBER RIDGE CONDOMINIUM



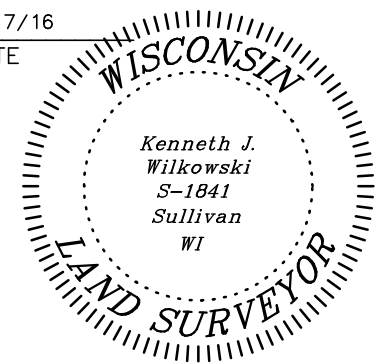
NOTES:

1. BEARINGS REFER TO THE WISCONSIN STATE PLANE COORDINATE SYSTEM, SOUTH ZONE
2. LIMITED COMMON ELEMENTS OF EACH UNIT CONSIST OF (1) PATIO OR DECK APPURTENANT TO A UNIT;(2) WALKWAYS PROVIDING UNIT ACCESS WHERE SHOWN ON THE PLAT ARE LIMITED COMMON ELEMENTS AND MAY BE APPURTENANT TO EITHER ONE OR TWO UNITS AS DEPICTED ON THE PLAT;(3) THE LIGHT FIXTURE AND LIGHT BULB LIGHTING THE PORCH OR DECK;(4) DRIVEWAY CONNECTING GARAGE FORMING PART OF UNIT AND ADJACENT PUBLIC ROAD OR PRIVATE DRIVE; AND (5) THE MAILBOX.
3. ALL AREAS WITHIN THE CONDOMINIUM AND OUTSIDE OF THE UNITS, ARE COMMON ELEMENTS.

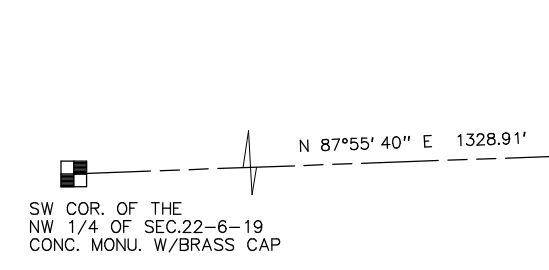
I KENNETH J WILKOWSKI, PLS DO HEREBY CERTIFY THAT I HAVE SURVEYED THE ABOVE DESCRIBED PROPERTY AND THAT THIS SURVEY IS AN ACCURATE REPRESENTATION OF THE EXTERIOR BOUNDARY LINES AND THE LOCATIONS OF EXISTING BUILDINGS AND IMPROVEMENTS AND PROPOSED BUILDINGS AND IMPROVEMENTS UPON SAID PROPERTY.

THIS PLAT IS A CORRECT REPRESENTATION OF VILLAS AT TIMBER RIDGE CONDOMINIUM ADDENDUM NO.1 AND THE IDENTIFICATION AND LOCATION OF EACH UNIT, AND TO EXTENT FEASIBLE, THE COMMON ELEMENTS CAN BE DETERMINED FROM THE PLAT. THE FLOOR PLANS SHOW ONLY THE APPROXIMATE DIMENSIONS, FLOOR AREAS AND LOCATION OF EACH UNIT.

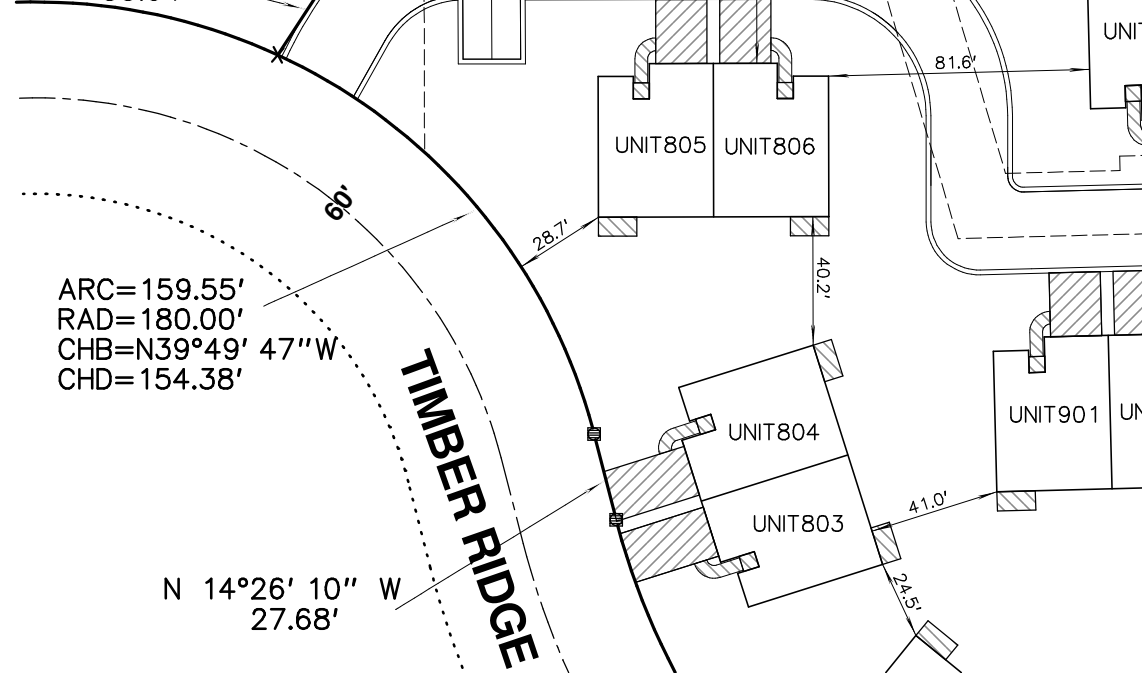
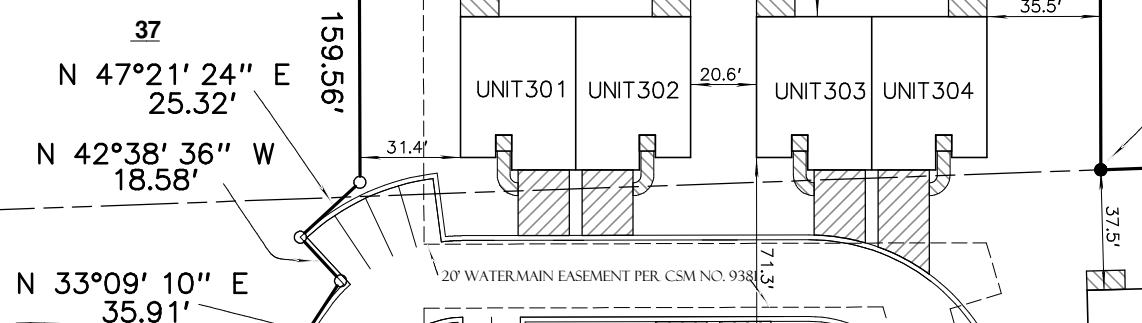
Kenneth J. Wilkowski 3/17/16
KENNETH J WILKOWSKI, PLS 1841 DATE



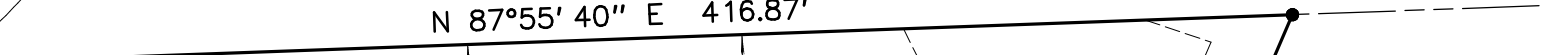
LOT 3 CSM NO. 9455



TIMBER VIEW ESTATES



SW COR. OF THE SE 1/4 OF THE NW 1/4 OF SECTION 22



PUBLIC STORM SEWER & STORMWATER EASEMENT PER CSM NO. 9381

PUBLIC SANITARY SEWER EASEMENT PER CSM NO. 9381

CSM NO. 9681
OUTLOT 1

KW SURVEYING INC.
725 PALMYRA STREET
P.O. BOX 32
SULLIVAN, WI. 53178
(262)-593-5800

THIS INSTRUMENT WAS DRAFTED BY KENNETH J. WILKOWSKI