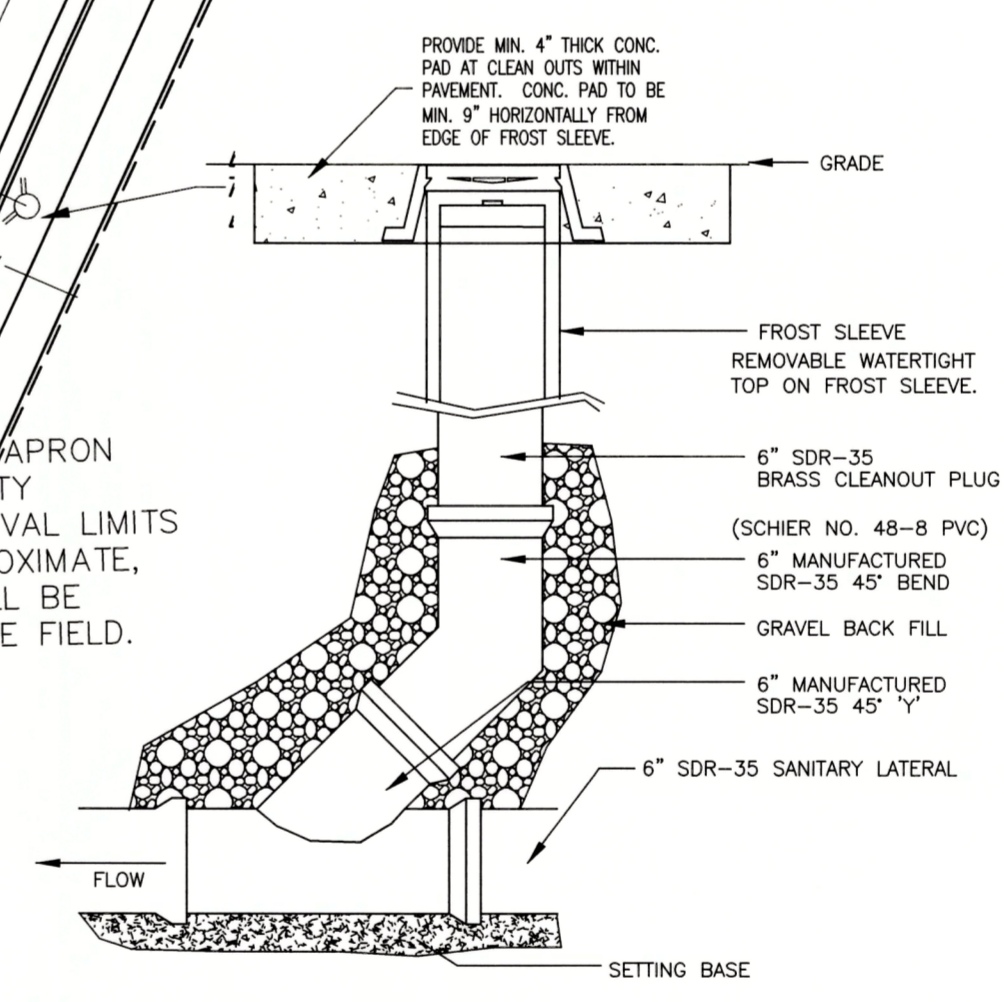
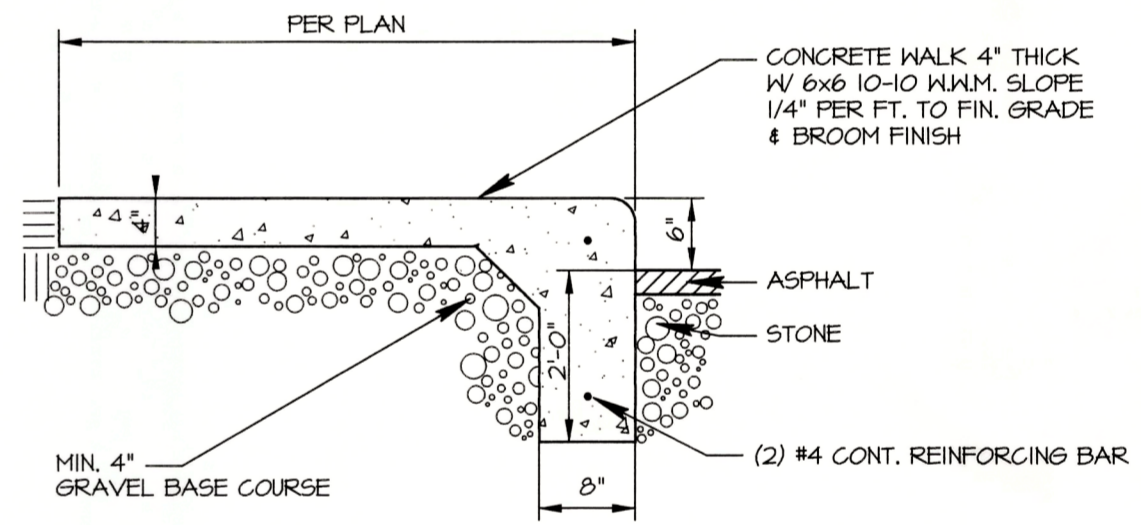
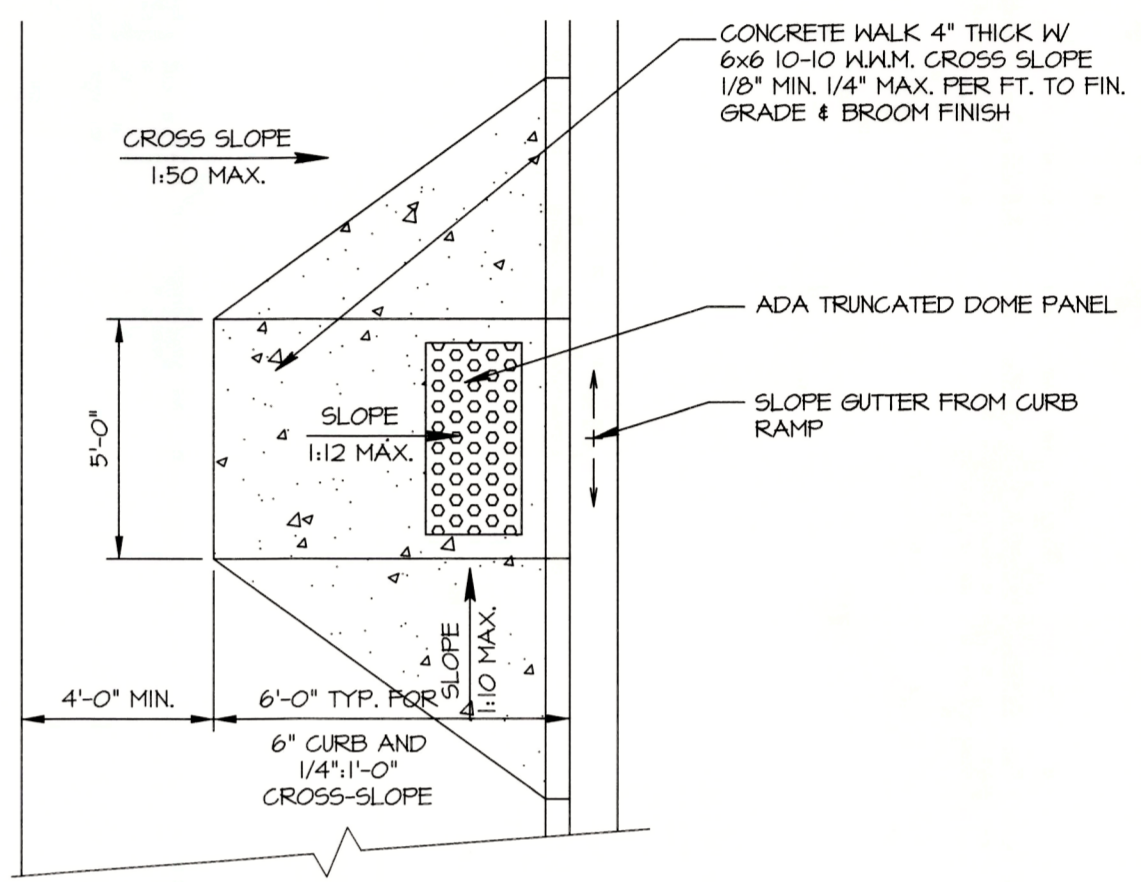
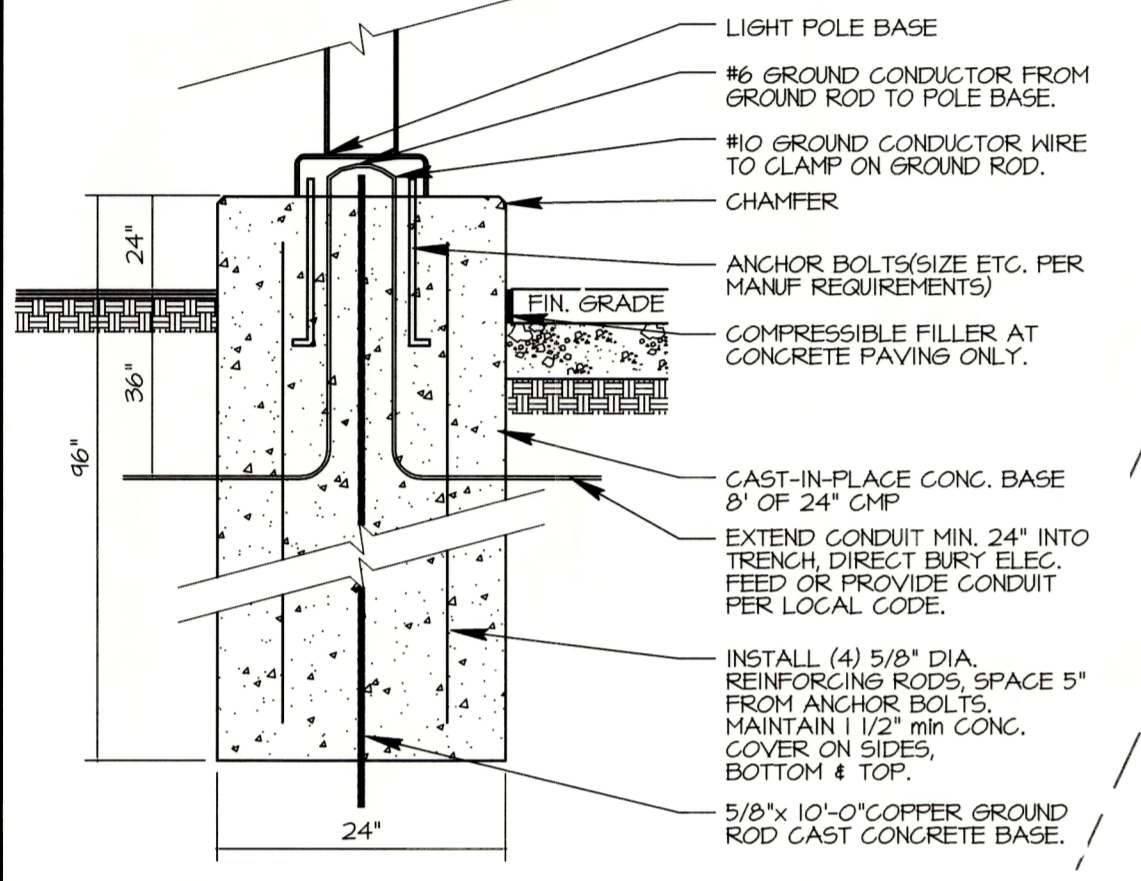
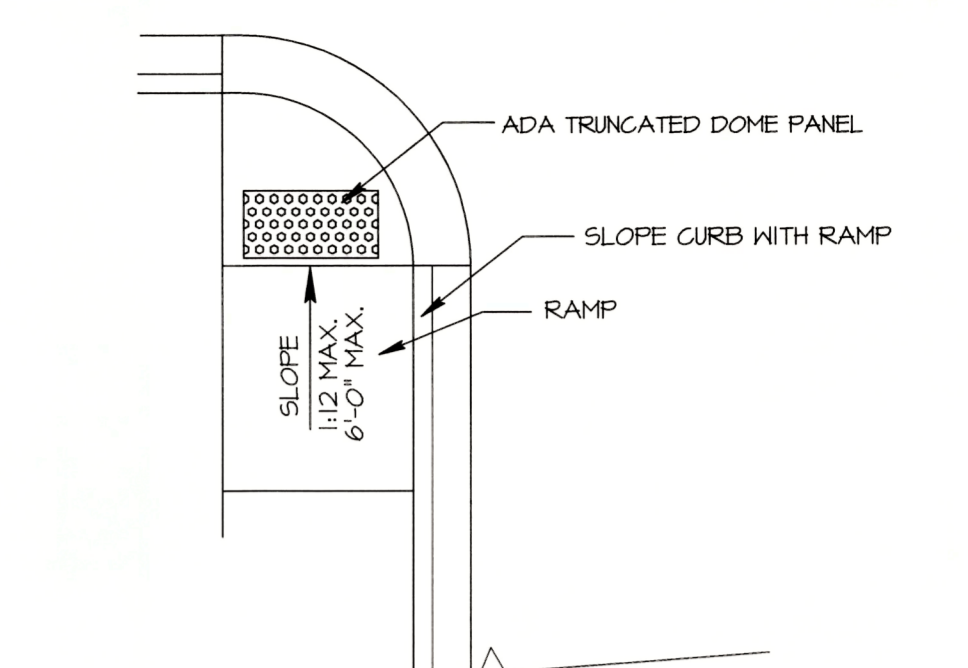
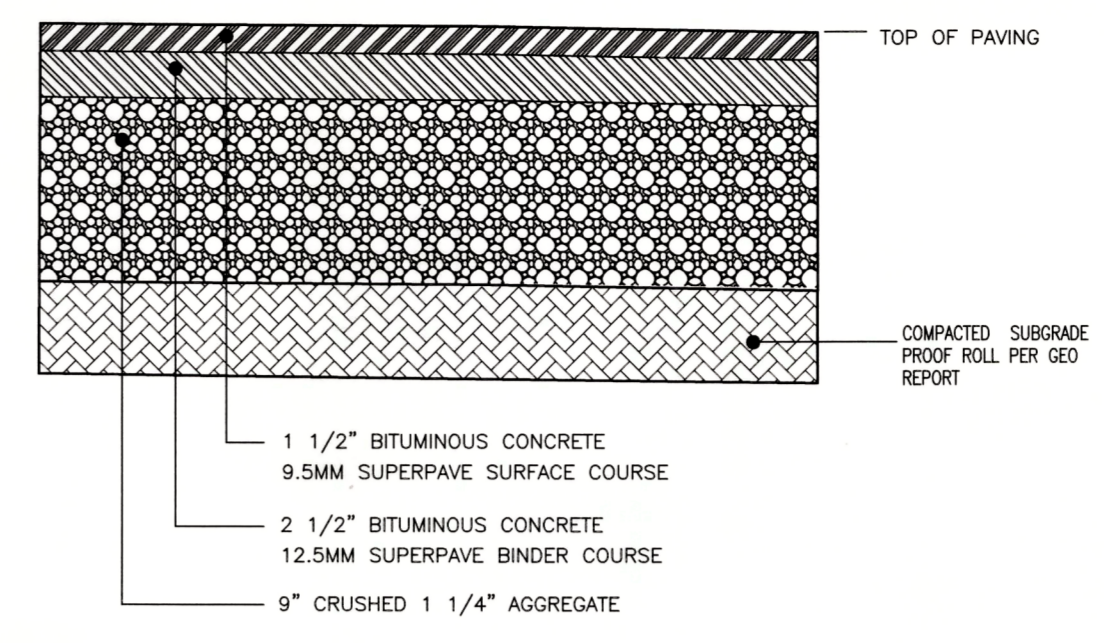


SIGN AS STIPULATED BY TRANS. 200.07 OF THE WISCONSIN ADMINISTRATIVE CODE. 12"x18" MIN. SIZE REQUIRED AT EACH H.C. ACCESSIBLE PARKING STALL. GREEN MESSAGE & BORDER. INTERNATIONAL SYMBOL. WHITE BACKGROUND.



SITE DATA:

GROSS LOT AREA	1.32 ACRES
ZONING	B-5
BUILDING	0.13 ACRES
PARKING AND WALKWAYS	0.86 ACRES
GREEN SPACE	0.33 ACRES (25%)
PARKING STALLS	102 STALLS
PARKING SURFACE AREA	33,685 SF
5% = 1685 ISLAND REQUIRED - 1845 PROVIDED	

GENERAL NOTES:

- ALL SANITARY LATERALS TO MAINTAIN MINIMUM 60° COVER.
- HYDRANT LEAD TO MAINTAIN 72" COVER.
- PIPE MATERIALS: Sanitary Lateral = 6" PVC SDR 35 ASTM D1785
 Water Lateral = PVC AWWA C900 ASTM D 2241,

REVISIONS:	NOTE	DATE

TDI ASSOCIATES, INC.
 All Rights Reserved
 18 W2250 JOHNSON DRIVE, SUITE B4
 WAUKESHA, WISCONSIN 53186
 PHONE 262-409-2530
 FAX 262-409-2511

CITY OF WAUKESHA, WI
 PIZZA RANCH #8610 - FLEETFOOT DRIVE
SITE DEVELOPMENT PLAN

SCALE: 1" = 20'-0" JOB NO: 15-383.000 DATE: 09-18-17
 DESIGNED BY: ROB DRAWN BY: ROB CHECKED BY:
 APPROVED BY: ENGINEER DATE SHEET C-2.0