

TDI ASSOCIATES, INC.
ARCHITECTURE & PLANNING

25217 SOUTH WIND LAKE ROAD
WIND LAKE, WISCONSIN 53185
PHONE 262-409-2530

**BOUCHER NISSAN
WAUKESHA**

1451 EAST MORELAND BLVD.
WAUKESHA, WISCONSIN

©TDI ASSOCIATES, INC
All Rights Reserved

OWNERSHIP OF DOCUMENTS

This document, and the ideas and design incorporated herein, as an instrument of professional service, is the sole property of TDI Associates, Inc., and is not to be used in whole or in part for any other project or purpose without the expressed written authorization of TDI Associates, Inc.

Sheet Title
FIRST FLOOR PLAN

Issued For: _____ Date: _____

Date: **05-31-23**

Job NO.: **23112.000**

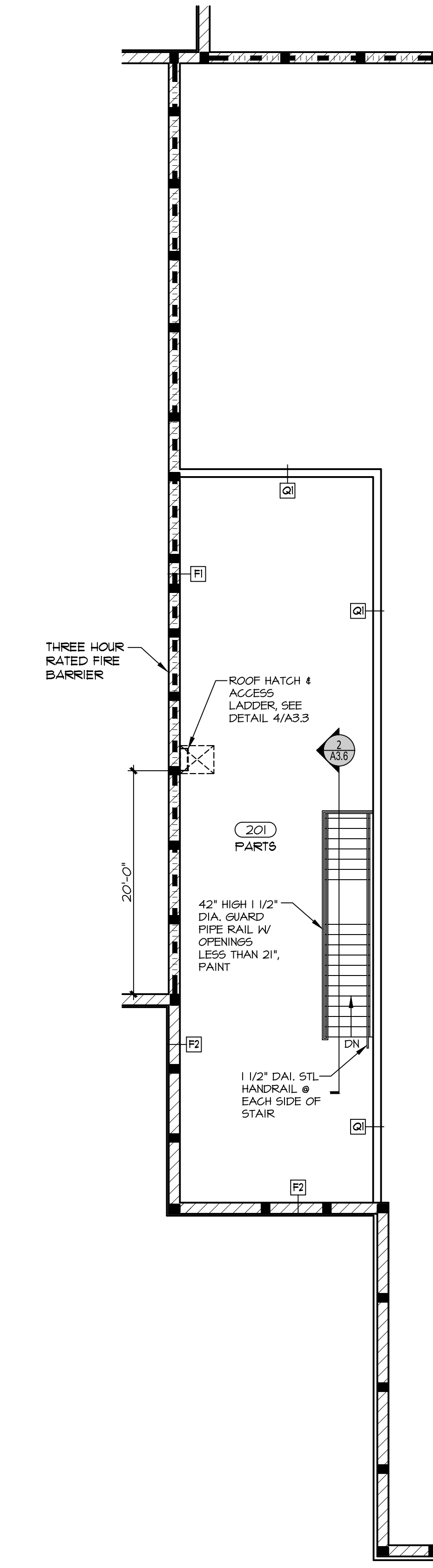
Drawn By: **RJH**

Sheet No.

A1.1

GENERAL NOTES
1. TENANT TO GET DRINKING WATER FROM SINK OR PROVIDE BOTTLED WATER.

DIMENSION NOTES
DIMENSIONS @ EXTERIOR WALLS ARE TO FACE OF CMU / FOUNDATION

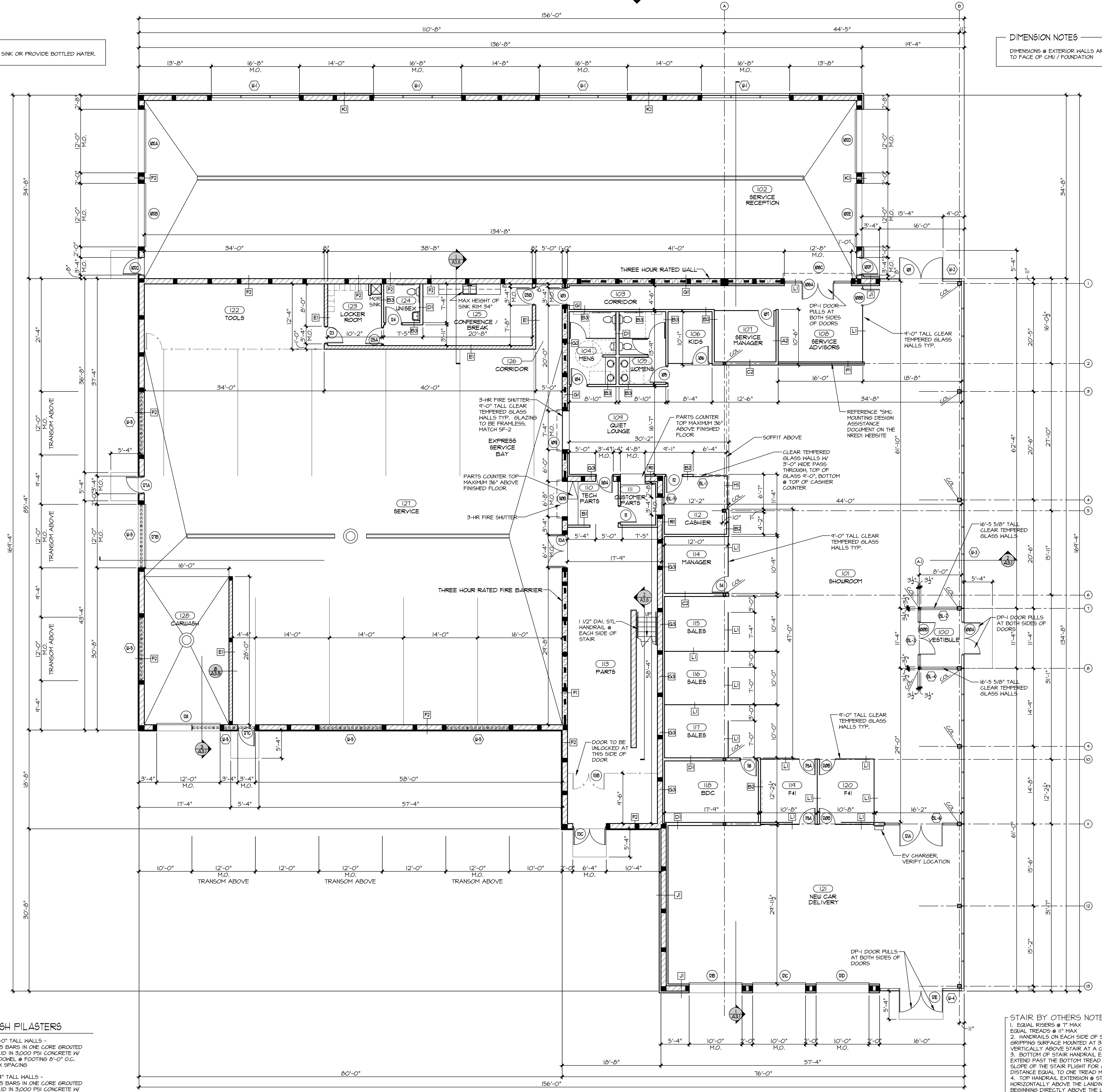


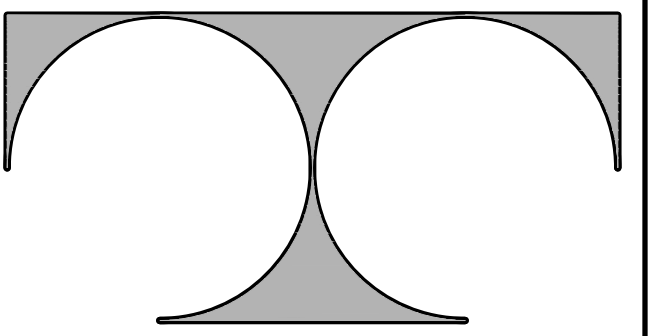
1 SECOND FLOOR PLAN
1/8"=1'-0" NORTH

FLUSH PILASTERS
■ 28'-0" TALL WALLS -
(1) #5 BARS IN ONE CORE GROUTED SOLID IN 3000 PSI CONCRETE W/ #5 DOVEL & FOOTING @ 8'-0" O.C. MAX SPACING
19'-4" TALL WALLS -
(1) #5 BARS IN ONE CORE GROUTED SOLID IN 3000 PSI CONCRETE W/ #5 DOVEL & FOOTING @ 16'-0" O.C. MAX SPACING

2 FIRST FLOOR PLAN
1/8"=1'-0" NORTH

STAIR BY OTHERS NOTE:
1. EQUAL RISERS @ 7" MAX EQUAL TREADS @ 11" MAX
2. HANDRAILS ON EACH SIDE OF STAIR, TOP GRIPPING SURFACE MOUNTED AT 34" MIN. & 39" MAX VERTICALLY ABOVE STAIR AT A CONSISTENT HEIGHT.
3. BOTTOM OF STAIR HANDRAIL EXTENSION SHALL EXTEND PAST THE BOTTOM TREAD NOSING @ THE SLOPE OF THE STAIR FLIGHT FOR A HORIZONTAL DISTANCE EQUAL TO ONE TREAD MIN.
4. TOP HANDRAIL EXTENSION @ STAIR SHALL EXTEND HORIZONTALLY ABOVE THE LANDING FOR 12" MIN. BEGINNING DIRECTLY ABOVE THE LANDING NOSING.

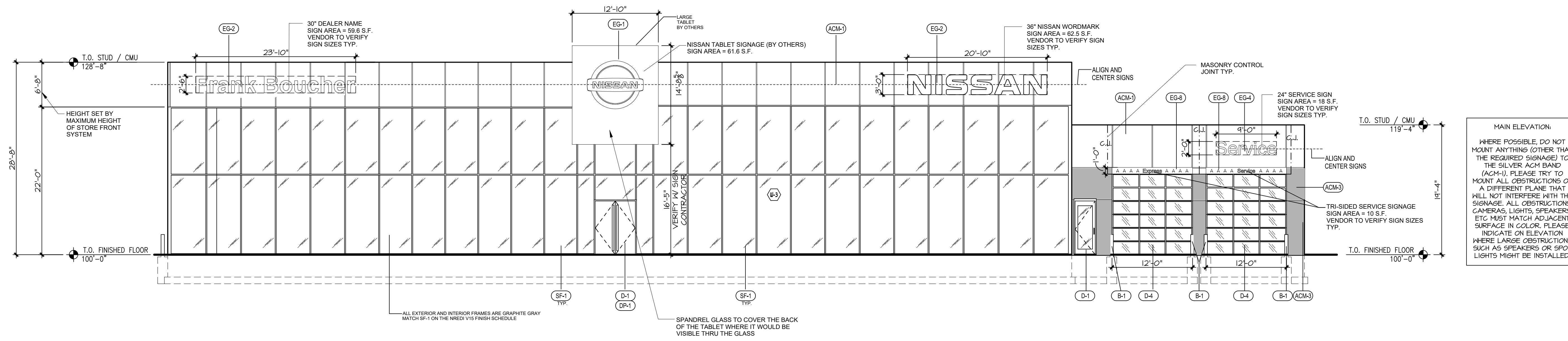




TDI ASSOCIATES, INC.
ARCHITECTURE & PLANNING

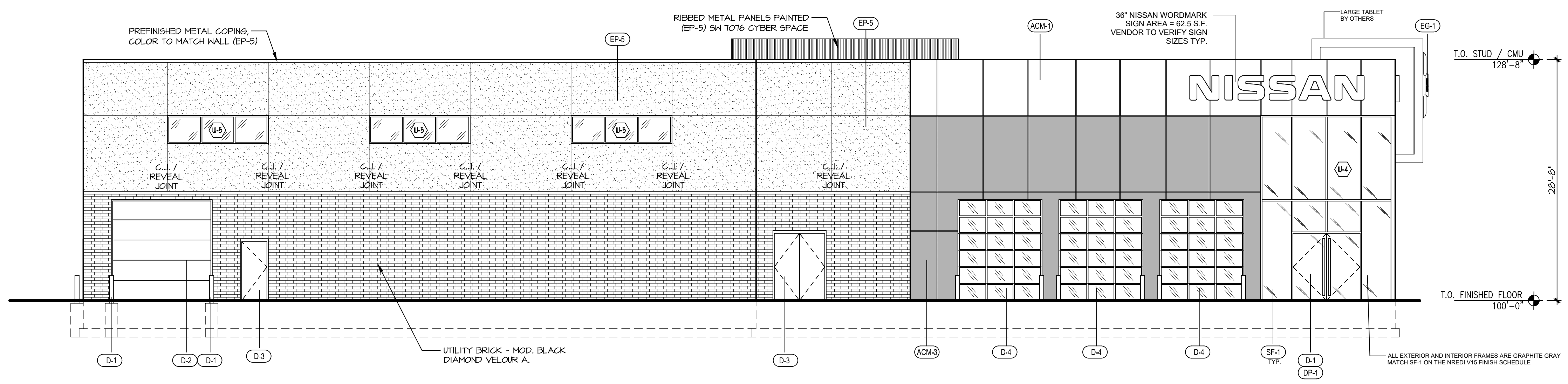
25217 SOUTH WIND LAKE ROAD
WIND LAKE, WISCONSIN 53185
PHONE 262-409-2530

BUILDING SIGN AREA TABULATION	
NORTH ELEVATION	
30" DEALER NAME SIGN AREA =	54.6 S.F.
NISSAN TABLET SIGN AREA =	61.6 S.F.
(2) 36" NISSAN WORDMARK SIGN AREA =	125 S.F.
24" SERVICE SIGN AREA =	18 S.F.
TRI-SIDED SERVICE SIGN	10 S.F.
TRI-SIDED SERVICE SIGN	10 S.F.
TOTAL SIGN AREA =	284.2 S.F.



MAIN ELEVATION:
WHERE POSSIBLE, DO NOT MOUNT ANYTHING (OTHER THAN THE REQUIRED SIGNAGE) TO THE SILVER ACH BAND (ACM-U). PLEASE TRY TO MOUNT ALL OBSTRUCTIONS ON A DIFFERENT PLANE THAT WILL NOT INTERFERE WITH THE SIGNAGE. ALL OBSTRUCTIONS: CAMERAS, LIGHTS, SPEAKERS, ETC MUST MATCH ADJACENT SURFACE IN COLOR. PLEASE INDICATE ON ELEVATION WHERE LARGE OBSTRUCTIONS SUCH AS SPEAKERS OR SPOT LIGHTS MIGHT BE INSTALLED.

1 NORTH ELEVATION
1/8" = 1'-0"



2 EAST ELEVATION
1/8" = 1'-0"

BOUCHER NISSAN
WAUKESHA
1451 EAST MORELAND BLVD.
WAUKESHA, WISCONSIN

©TDI ASSOCIATES, INC
All Rights Reserved
OWNERSHIP OF DOCUMENTS
This document, and the ideas and design incorporated herein, as an instrument of professional service, is the sole property of TDI Associates, Inc., and is not to be used in whole or in part for any other project or purpose without the expressed written authorization of TDI Associates, Inc.

Sheet Title
EXTERIOR ELEVATIONS

Issued For: _____ Date: _____

Date: **05-31-23**

Job NO.: **23112.000**

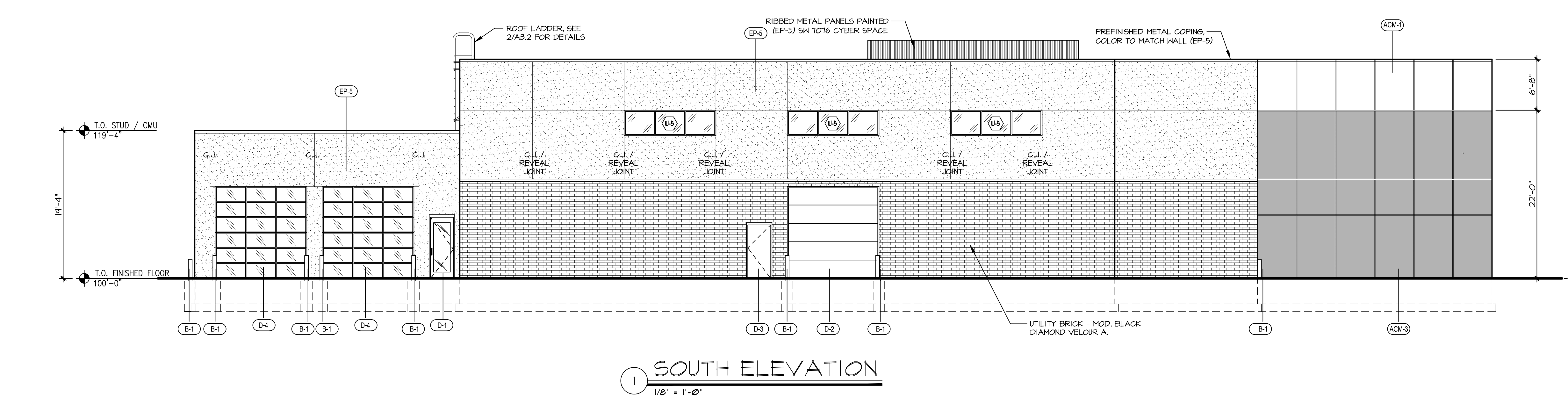
Drawn By: **RJH**

Sheet No.

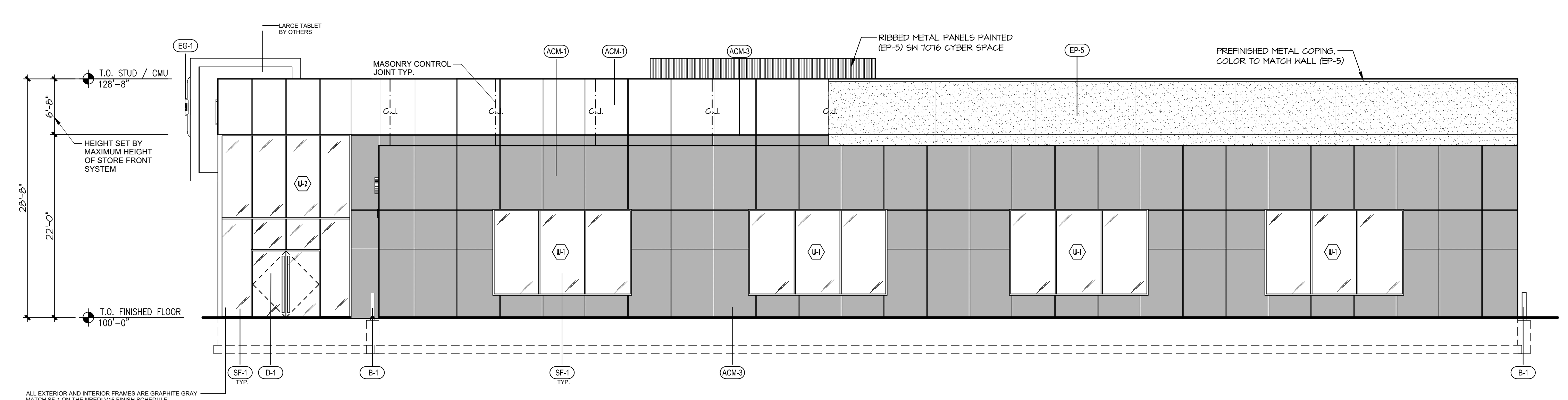
A2.1

EXTERIOR FINISH SCHEDULE

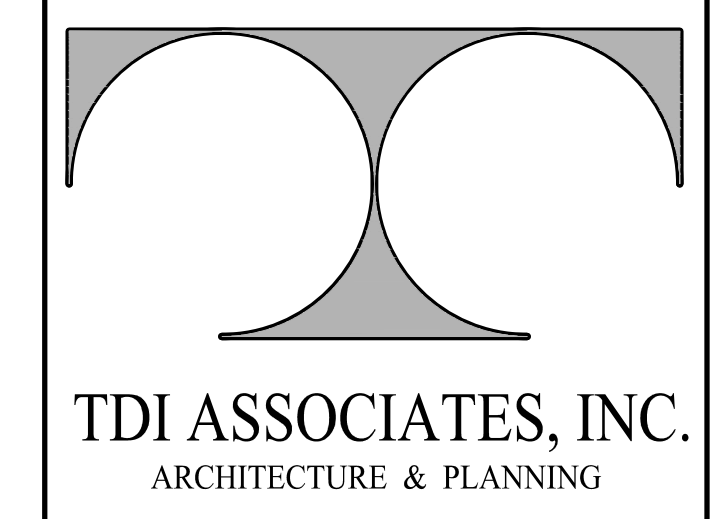
NISSAN NORTH AMERICA							
NREDI EXTERIOR FINISH SCHEDULE V15							
CODE	MATERIAL	MANUFACTURER	PRODUCT	COLOR	LOCATION	APPLICATION NOTES	CONTACT INFORMATION
ACM-1	ALUMINUM COMPOSITE MATERIAL	MITSUBISHI PLASTICS	ALPOLIC 4mmBSK3.5 ALUCUBOND REYNOLBOND	SILVER METALLIC SUNRISE SILVER METALLIC STERLING SILVER	GENERAL FAÇADE SITE SIGNAGE	NOTE: DRY REVEAL SYSTEM	MITSUBISHI CONTACT: DAVE KEARNEY AT (757) 382-5724 3A CONTACT: MIKE CALDWELL AT (470) 554-2651 ALCOA CONTACT: KEVIN JUDEMAN AT (478) 319-0139 FOR USE BY AG. NOT TO BE USED IN CONSTRUCTION OF BUILDING
ACM-2	ALUMINUM COMPOSITE MATERIAL	MITSUBISHI PLASTICS	ALPOLIC 734L927 (FEVE)	VALFLON 10742 RED	FAÇADE ENTRY SITE SIGNAGE	NOTE: DRY REVEAL SYSTEM	
ACM-3	ALUMINUM COMPOSITE MATERIAL	MITSUBISHI PLASTICS	ALPOLIC 732L878 (FEVE)	ALUCUBOND REYNOLBOND	SERVICE DRIVE GENERAL FAÇADE AND ENTRY	NOTE: DRY REVEAL SYSTEM	MITSUBISHI CONTACT: DAVE KEARNEY AT (757) 382-5724 3A CONTACT: MIKE CALDWELL AT (470) 554-2651 ALCOA CONTACT: KEVIN JUDEMAN AT (478) 319-0139
B-1	BOLLARDS	ID METALCO	IDX BOLLARD	STAINLESS STEEL	SITE		CONTACT: ID METALCO, INC. (760) 690-8557
CA-1	COLORLED ASPHALT	SEAL MASTER PAVEMENT PRODUCTS & EQUIPMENT	COLORPAVE NEUTRAL CONCRENT RATE	INTEGRAL COLOR: PMS 200 SEALED	CUSTOMER PARKING		CONTACT: JEFF GERHART AT SEAL MASTER, (800) 395-7325
CC-1	CONCRETE	QUESTMARK	IMPRECOATED CONCRETE PAD	STAINED TO MATCH: PMS 200 SEALED	CUSTOMER PARKING AND DISPLAY PAD TRIM		CONTACT: CONTACT YOUR QUESTMARK REGIONAL OFFICE
CC-3	CONCRETE	SCOFIELD	INTEGRAL COLOR SG SCOFIELD SELECT SEAL PLUS CLEAR CONCRETE SEALER	COLOR TO MATCH CT-2 TEXTURED 24" X 24" STAMP 610mm X 610mm	EXTERIOR ENTRY		CONTACT: SCOTT REYES AT LM SCOFIELD COMPANY; (586) 292-1492; SCOTT.REYES@SCOFIELD.COM
CF-1	CAP FLASH	PROVIDED BY ARCHITECT OF RECORD		COLOR TO MATCH ACM-1	PERIMETER OF BUILDING		CONTACT: DAVID J. KEARNEY AT ALPOLIC (757) 382-5724
CMU-1	CONCRETE MASONRY UNIT	BRAMPTON BRICK	PROFILE SERIES CONCRETE BLOCK	ABSOLUTE BLACK QUARTZ	SERVICE BAYS	NOTE: REFER TO MANUFACTURERS SALES REPRESENTATIVE FOR APPROPRIATE PRODUCTS, INSTALLATION RECOMMENDATIONS AND PRODUCT SUBSTITUTIONS BASED ON REGION. NOTE: SEE DRAWING FOR DOOR PULL SPECIFICATION	CONTACT: JOE ROHRER AT SYNDER BRICK AND BLOCK (937) 603-3011; JVSRYNDRBRICK@HOTMAIL.COM
D-1	MAN DOOR	CRL US ALUMINUM ARCHITECTURAL PRODUCTS & SERVICE	08 4210 CRL WEDGE LOCK DRY GLAZE DOOR RAIL SYSTEM DOOR PULL: STRAIGHT STYLE LADDER PULL 42LPBS STANDARD WEDGE LOCK DOOR RAIL: CRL DR4712 4" FALL TAPERED NOTE: FOR A FULL FRAMED DOOR USE THE CRL ENTICE ULTRA NARROW STYLE WITH FULL FRAMED PERFORMANCE DOORS	GLASS AND ALUMINUM FINISH COLOR TO MATCH PC-2 TIGER DRY LAC RAL 7024 DOOR PULL: POWDER COATED PC-3 RAL 3031 MATCH DOOR RAIL: POWDER COATED RAL 7024 MATCH	NEW VEHICLE DELIVERY & SHOWROOM ENTRY		CONTACT: BRAD THURMAN (213) 309-3628
D-2	ROLLING OVERHEAD SOLID DOORS	SHERWIN WILLIAMS PAINT	DURATION EXTERIOR ACRYLIC SATIN K33-200 SERIES	EP-5	PARTS RECEIVING SERVICE WORKSHOP	CONTACT SW FOR METAL DOOR HIGH PERFORMANCE ACRYLIC SYSTEM OR EPOXY PRIMER WITH URETHANE TOPCOAT	CONTACT: ARCHITECT OF RECORD
D-3	SOLID MAN DOOR	SHERWIN WILLIAMS PAINT	DURATION EXTERIOR ACRYLIC SATIN K33-200 SERIES	EP-5	SERVICE BAYS STAIRWELL	CONTACT SW FOR METAL DOOR HIGH PERFORMANCE ACRYLIC SYSTEM OR EPOXY PRIMER WITH URETHANE TOPCOAT	CONTACT: ARCHITECT OF RECORD
D-4	SERVICE RECEPTION ROLLING OVERHEAD DOOR	RYTEC	RYTEC SPIRAL FV DOOR	ALUMINUM SLAT FRAMES POWDER COATED RAL 7024 GRAPHITE GRAY WITH CLEAR POLYCARBONATE WINDOWS			CONTACT: JOSH MOFFITT AT RYTEC CORPORATION; (937) 623-0570
DP-1	DOOR PULL	SOURCED BY GC	CUSTOM ITEM	POWDER COATED PC-3 RAL 3031 MATCH - DOOR MANUFACTURER CAN POWDER COAT	MAIN ENTRY VEHICLE DELIVERY SERVICE WRITE-UP		CONTACT: GC
EFS-1	EXTERIOR INSULATING FINISHING SYSTEM	DRIVVIT SYSTEMS, INC	SANDBLAST DPR	NISS-03-1030	GENERAL FAÇADE		CONTACT: BOB DAZEL AT DRIVVIT SYSTEMS (734) 243-9301
EP-5	PAINT	SHERWIN WILLIAMS	PRIMER: PRIMER DEPENDS ON SUBSTRATE. PLEASE CHECK WITH SW PAINT: DURATION EXTERIOR ACRYLIC SATIN K33-200 SERIES DRY LAC 49/2470	SW 7076 CYBERSPACE COLOR TO MATCH RAL 7024	ALL EXTERIOR BUILDING SURFACES NOT COVERED WITH ACM, INCLUDING DOORS AND BUILDING BASE		ORDER LOCALLY
PC-3	POWDER COATED METAL	TIGER DRY LAC U.S.A., INC	DRY LAC 49/2470	RAL 3031 GL/SM	DOOR PULLS		
SF-1	STOREFRONT SYSTEM	KAWNEER	1600UT SYSTEM 2 ULTRA THERMAL CURTAIN WALL SYSTEM	GLASS: CLEAR MULLIONS ARE TO BE RAL 7024/GRAPHITE GRAY. EXTERIOR CAPS ALSO TO MATCH RAL-7024/GRAPHITE GRAY. VERTICALS ONLY CAN BE BUTT JOINTED (1" INFILL) AS AN ALTERNATIVE	GENERAL EXTERIOR FAÇADE SERVICE DRIVE		CONTACT: DOUG HESS OF KAWNEER, NATIONAL ACCOUNT MGR. (317) 771-9265



1 SOUTH ELEVATION
1/8" = 1'-0"



2 WEST ELEVATION
1/8" = 1'-0"



TDI ASSOCIATES, INC.
ARCHITECTURE & PLANNING

25217 SOUTH WIND LAKE ROAD
WIND LAKE, WISCONSIN 53185
PHONE 262-409-2530

BOUCHER NISSAN
WAUKESHA
1451 EAST MORELAND BLVD.
WAUKESHA, WISCONSIN

©TDI ASSOCIATES, INC
All Rights Reserved
OWNERSHIP OF DOCUMENTS
This document, and the ideas and design incorporated herein, as an instrument of professional service, is the sole property of TDI Associates, Inc., and is not to be used in whole or in part for any other project or purpose without the expressed written authorization of TDI Associates, Inc.

Sheet Title
EXTERIOR ELEVATIONS

Issued For: _____ Date: _____

Date: 05-31-23
Job NO.: 23112.000
Drawn By: RJH
Sheet No.

A2.2