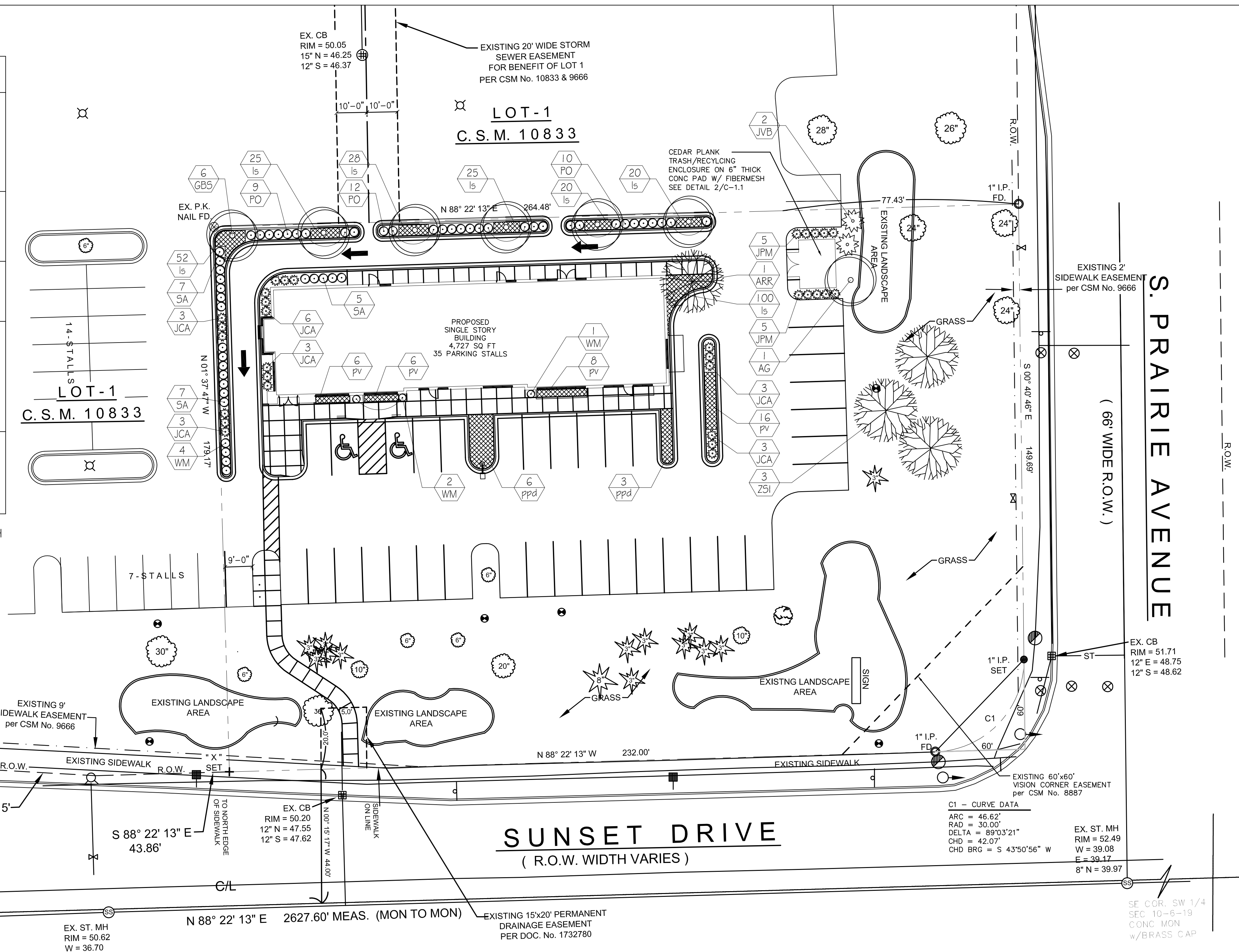


PLANT SCHEDULE

Key	Botanical Name	Common Name	Qty	Size	Root
Major Deciduous Trees					
ARR	Acer rubrum 'Red Sunset'	Red Sunset Maple	1	2" Cal	B&B
GBP	Ginkgo biloba 'Princeton Sentry'	Princeton Sentry Ginkgo	6	2" Cal	B&B
ZSI	Zelkova serrata 'Illinois Hardy'	Illinois Hardy Zelkova	3	2" Cal	B&B
Minor Deciduous Trees					
AG	Amelanchier x grandiflora	Apple Serviceberry	1	1.5" Cal	B&B
Evergreens Trees					
JVB	Juniperus virginiana 'Burkii'	Burk Eastern Redcedar	2	4' Ht	B&B
Shrubs					
JCA	Juniperus communis 'Aurea'	Golden Common Juniper	21	24" Spd	Cont
JPM	Juniperus pfitzeriana 'Mint Julep'	Mint Julep Juniper	10	18" Ht	Cont
PO	Physocarpus opulifolius 'Donna May'	Little Devil Ninebark	31	15" HT	Cont
SA	Symphoricarpos albus	Common Snowberry	19	18" Ht	Cont
WM	Weigela 'Minuet'	Minuet Weigela	7	18" HT	Cont
Perennials, Grasses and Groundcovers					
ls	Liriope spicata	Creeping Lilyturf	270	4"	Pot
pv	Panicum virgatum	Switch Grass	36	1 Gal	Cont
ppd	Prunus pumila var. depressa	Eastern Sandcherry	9	24" Spd	Cont

NOTE: ALL PLANTING BEDS SHALL RECEIVE A 3" LAYER OF SHREDDED HARDWOOD BARK MULCH

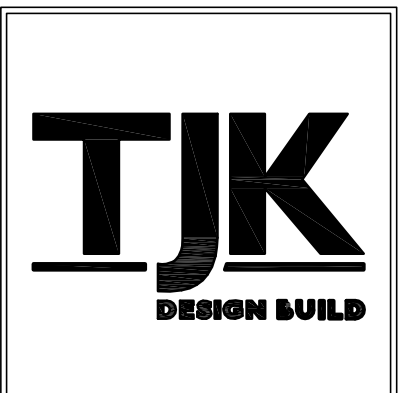
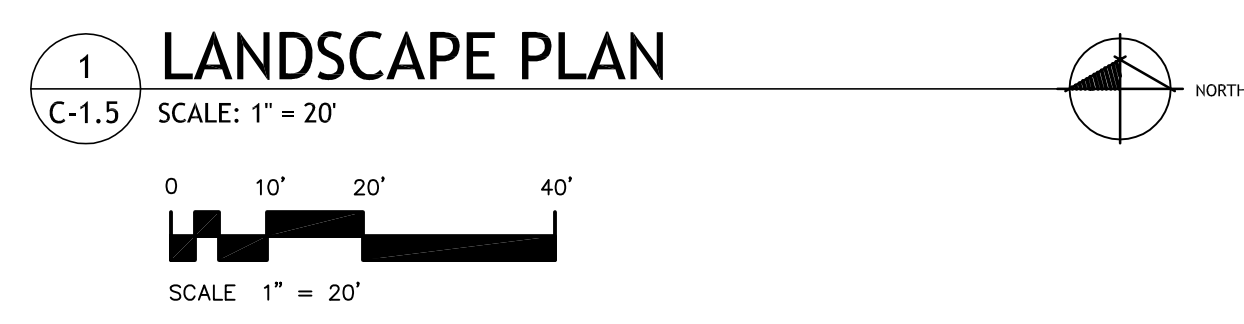


- LEGEND:**
- PROPERTY CORNER
 - RPROPERTY LINE
 - SAN — SANITARY SEWER
 - STM — STORM SEWER
 - W — WATER MAIN
 - ⊕ FIRE HYDRANT
 - ⊕ UTILITY POLE
 - ⊕ UTILITY POLE W/ LIGHT
 - MANHOLE
 - WATER VALVE
 - CURB INLET
 - STORM SEWER ACCESS COVER
 - ⊕ SPOT ELEVATION
 - ⊕ MONITORING WELL
 - ▨ EXISTING BUILDING

TO OBTAIN LOCATIONS OF PARTICIPANTS UNDERGROUND FACILITIES BEFORE YOU DIG IN WISCONSIN

CALL DIGGERS HOTLINE
1-800-242-8511
TOLL FREE

WS STATUTE 182.0175(1874)
REQUIRES MIN. 3 WORK DAYS
NOTICE BEFORE YOU EXCAVATE



612 WEST MAIN STREET
MADISON, WI 53703
608-257-1090
FAX 608-257-1092

REV	DATE
1	9.18.15

COPYRIGHTED DRAWING
© 2011, TJK Design Build, Inc. ALL RIGHTS RESERVED. NEITHER THIS DOCUMENT NOR THE INFORMATION HEREIN MAY BE REPRODUCED, DISTRIBUTED, USED OR DISCLOSED, IN WHOLE OR IN PART, UNLESS EXPRESSLY AUTHORIZED IN WRITING BY TJK Design Build, Inc.

PROPOSED FACILITY FOR:
KLINKE COMMERCIAL DEVELOPMENT
SUNSET DRIVE
WAUKESHA, WISCONSIN

C-1.5
9.8.15