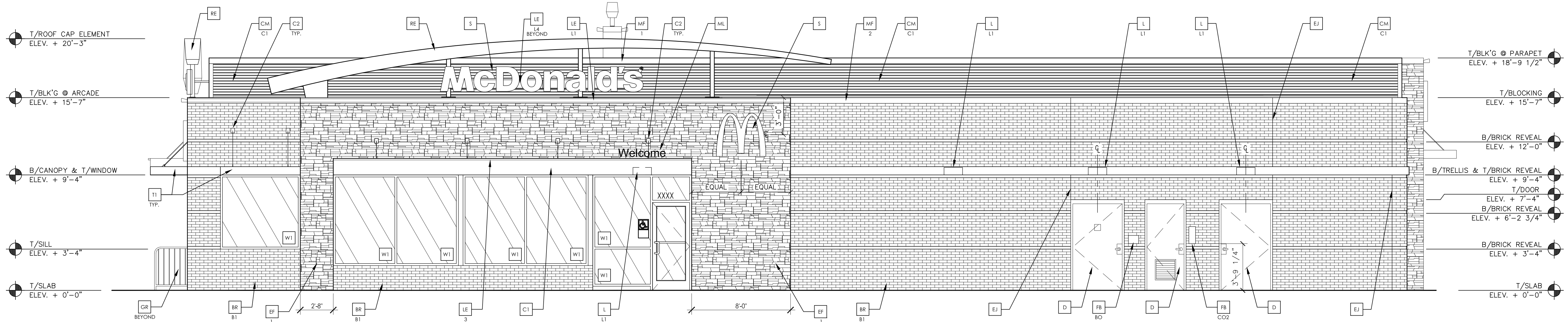




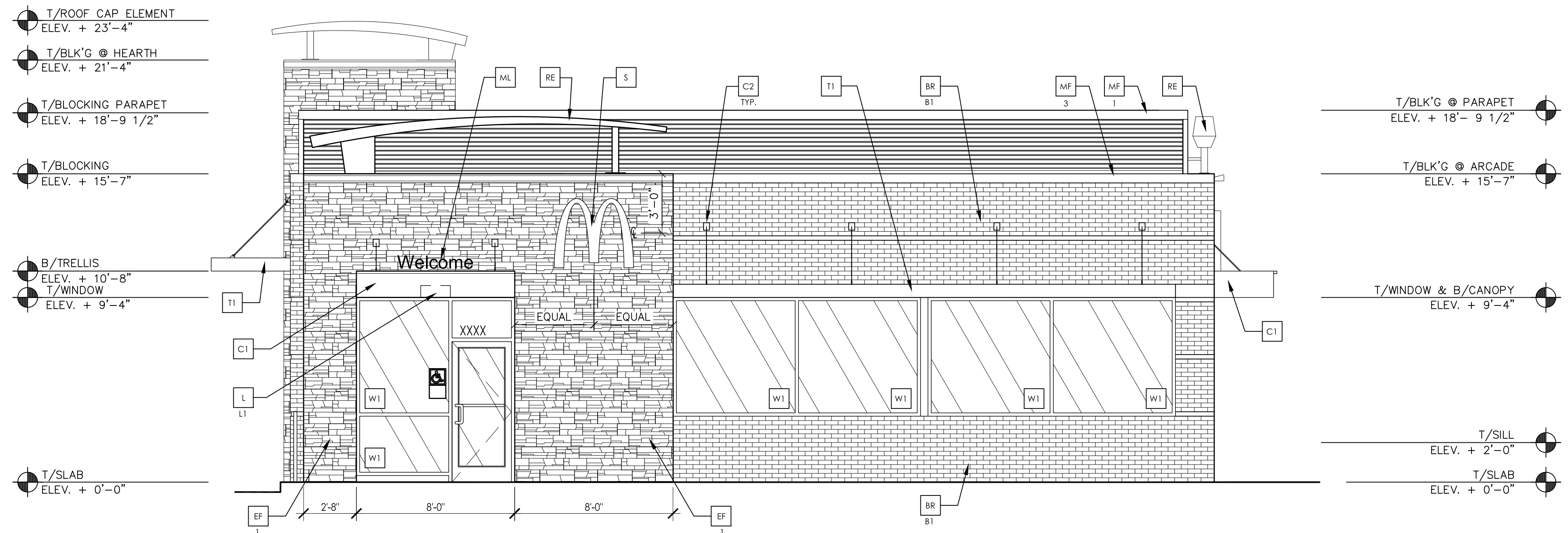
haag müller, inc.  
Architecture • Engineering • Interiors

101 East Grand Avenue, Suite 1  
Port Washington, Wisconsin 53074  
262.268.1200 www.haagmuller.com

© 2017 haag müller, inc.



1 SOUTH ELEVATION (E. MORELAND BLVD.)  
SCALE: 1/4" = 1'-0"



2 WEST ELEVATION  
SCALE: 1/4" = 1'-0"

KEY NOTES:

- BR FACEBRICK  
B1 = "RUBIGO RED VELOUR" BY BELDEN OR EQUAL
- C1 ALUMINUM CANOPY SYSTEM (COLOR: GOLD)
- C2 ALUMINUM CANOPY TE-BACK SYSTEM
- CJ CONTROL JOINT  
X — TYPE: 1 = EFS
- CM CORRUGATED METAL PANEL — SEE 1B/A5.0  
C1 — COLOR:  
C1 = "CITYSCAPE" BY METAL-ERA
- D HOLLOW METAL DOOR — PAINT TO MATCH COLOR OF SURROUNDING MATERIAL
- EF EXTERIOR FINISH (STONE) = BORAL STONE PRODUCTS  
1. MCD PFSW BLEND  
2. MCD APFW BLEND
- EJ EXPANSION JOINT, SEE DETAIL 7/A4.1
- FB CO2 = BULK CO2 FILL BOX (EOPM SCHEDULE ITEM 49.00)  
BO = BULK OIL FILL BOX (EOPM SCHEDULE ITEM 700.18) — CONFIRM USE WITH MCD PROJECT MANAGER
- GR GUARD RAIL — SEE SITE PLAN FOR EXACT LOCATION AND LENGTH
- L LIGHT FIXTURE (WALL SCENCE) — SEE ELECTRICAL  
L1 = UP AND DOWN FIXTURE  
L2 = DOWN ONLY FIXTURE
- LE ACCENT LIGHTING — SEE ELECTRICAL  
L1 — LED LIGHT:  
L1 = UP AND DOWN FIXTURE  
L2 = DOWN ONLY FIXTURE  
L3 = INTEGRAL CANOPY FIXTURE  
L4 = UP ONLY FIXTURE
- ML METAL LETTERING — BY OTHERS
- MF METAL FASCIA — COLOR TO MATCH CORRUGATED METAL PANEL — SEE 1/A5.0  
1 — TYPE:  
1 = PRE-FAB ANCHOR-TITE FASCIA  
2 = PRE-FAB CUSTOM ARCADE FASCIA  
3 = PRE-FAB MASONRY CAP FASCIA
- PB PIPE BOLLARD — PAINTED YELLOW
- PT (RMHC) COIN COLLECTOR UNIT #MPT 012000 STD CALL 1-888-745-7435 TO ORDER
- RE ROOF CAP ELEMENT BY OTHERS
- RO ROOF DRAIN OVERFLOW PIPE PAINT TO MATCH SURROUNDING MATERIAL
- T1 ALUMINUM TRELLIS SYSTEM
- T2 TRELLIS TE-BACK SYSTEM
- T3 ALUMINUM TRELLIS 2" x 8" WALL FASCIA SYSTEM — REFER TO SIM. DETAIL 3 ON SHEET A5.1
- S MCDONALD'S SIGNAGE BY OTHERS — UNDER SEPARATE PERMIT.
- W1 EXTERIOR WINDOW ASSEMBLY — TEMPERED GLASS — SEE ASSEMBLY NOTES
- W2 DRIVE-THRU WINDOW BY READY ACCESS 600 SERIES, 36" SERVICE HEIGHT WITH TRANSOM — MANUAL OPEN; ELECTRONIC RELEASE  
XX — SLIDE DIRECTION: RL = RIGHT TO LEFT  
LR = LEFT TO RIGHT

EXTERIOR ELEVATIONS  
MCDONALD'S REBUILD PROJECT  
MCDONALD'S RESTAURANT (SITE ID # 480107)  
2340 EAST MORELAND BOULEVARD  
CITY OF WAUKESHA, WISCONSIN

REVISIONS		DESCRIPTION
NO.	DATE	Submission for final plan commission
1	03-16-17	

DATE: 01-23-16  
PROJ. NO: 1701102  
DRAWN BY: AY  
SHEET

A-2.1