



Waukesha Water Utility

SERVING WAUKESHA SINCE 1886

115 DELAFIELD STREET
WAUKESHA, WI 53188-3615

Telephone: (262) 521-5272 • Fax: (262) 521-5265 • E-mail: contactus@waukesha-water.com

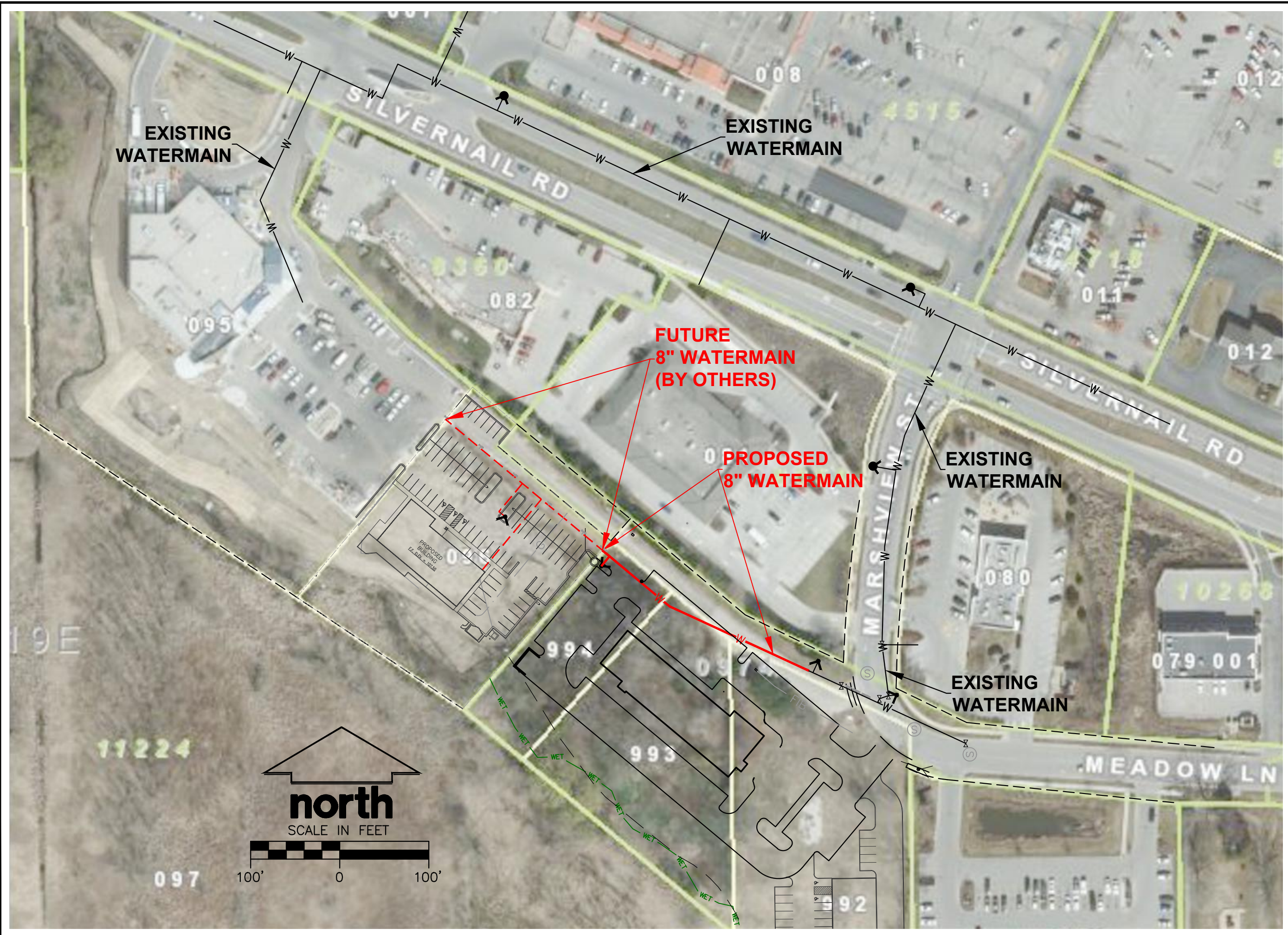
MEMORANDUM

Date: September 11, 2019
To: Dan Duchniak, P.E.
From: Chris Walter, P.E.
Re: Avid Hotel – Water Main Extension

On August 28, 2019, Purity Real Estate requested a water main extension Avid Hotel. The hotel will be a 95-room, approximately 11,500 square foot facility on 1.6 acres. This will be located off of Meadow Lane and Marshview Street, just south of Silvernail Road. They are proposing to extend approximately 229 feet of 8-inch water main, which will reside within a public water main easement. All design comments have been addressed and approved by the Utility. The fact sheet is also enclosed with this memo.

Recommended Motion: Move to approve of the water main extension request for Avid Hotel, at no cost the Utility.

Enc.



- CIVIL ENGINEERING
- SURVEYING & MAPPING
- CONSTRUCTION SERVICES
- WATER RESOURCES
- PLANNING & DEVELOPMENT
- TRANSPORTATION ENGINEERING
- LANDSCAPE ARCHITECTURE

MILWAUKEE REGIONAL OFFICE
 W236 N1610 BUSSE ROAD SUITE 100
 WAUKESHA, WISCONSIN 53188
 262.513.0666 PHONE | 262.513.1232 FAX

MADISON | MILWAUKEE
 KENOSHA | APPLETON

www.jsdinc.com

SERVICES PROVIDED TO:
 AVID HOTEL

PROJECT:
 AVID HOTEL

PROJECT LOCATION:
 CITY OF WAUKESHA
 WAUKESHA COUNTY, WI

JSD PROJECT NO.: 18-8713A

SEAL/SIGNATURE:

ALTHOUGH EVERY EFFORT HAS BEEN MADE IN PREPARING THESE PLANS AND CHECKING THEM FOR ACCURACY, THE CONTRACTOR AND SUBCONTRACTORS MUST CHECK ALL DETAIL AND DIMENSIONS OF THEIR TRADE AND BE RESPONSIBLE FOR THE SAME.

SURVEYED BY: _____
 DRAWN BY: _____
 CHECKED BY: _____

PLAN MODIFICATIONS:	DATE:

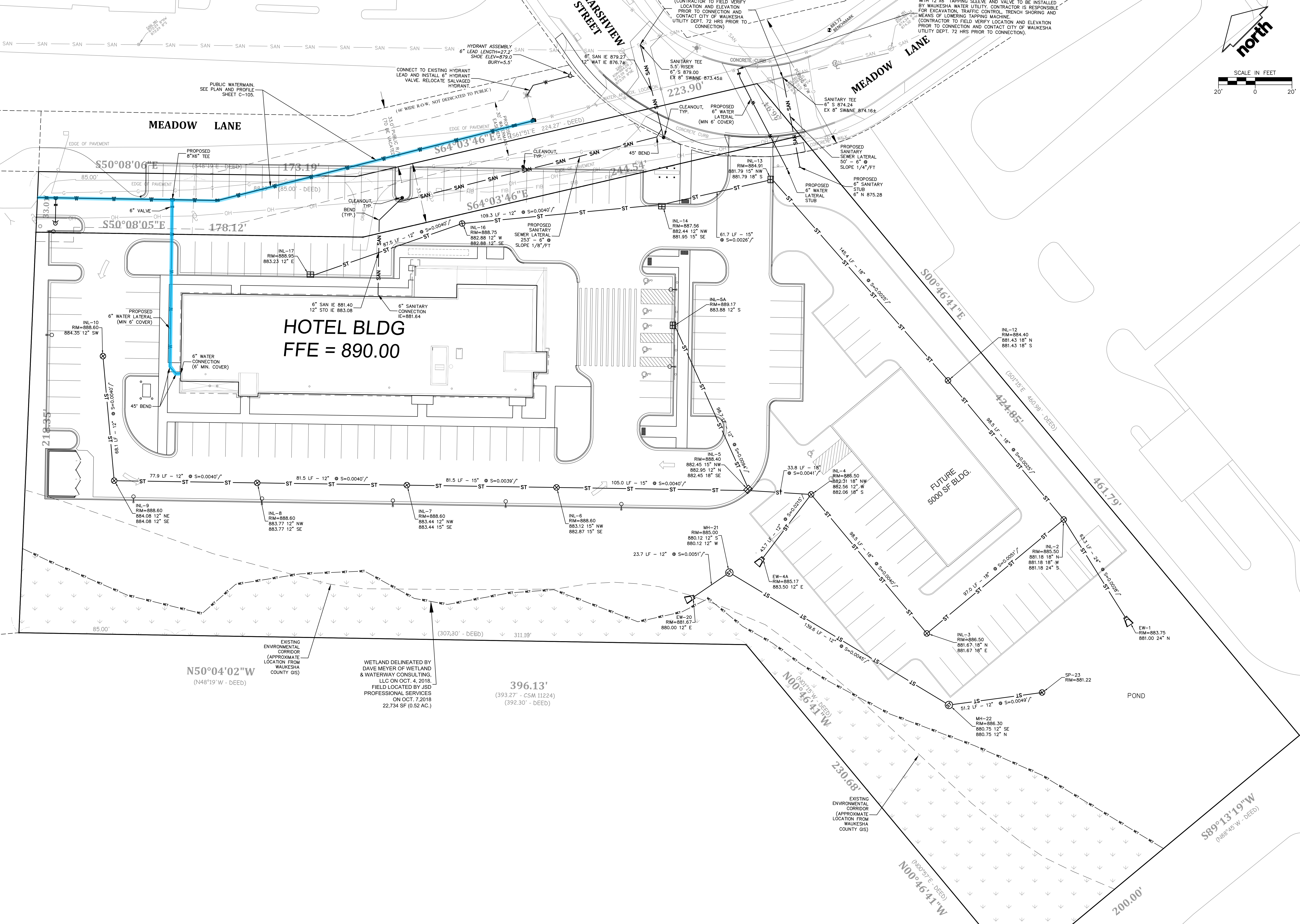
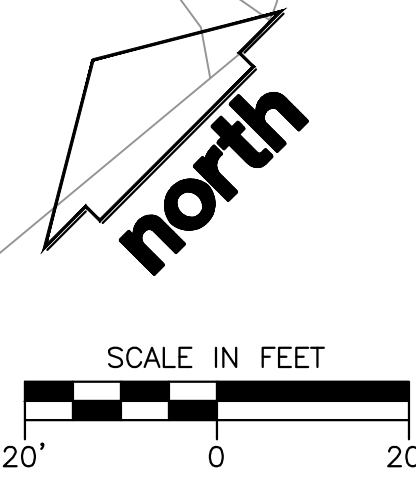


Call 811 or (800) 242-8511
 Milwaukee Area (262) 432-7910
 Hearing Impaired TDD (800) 542-2289
 www.DiggerHotline.com

SHEET TITLE:
 WATERMAIN
 LOCATION
 MAP

SHEET NUMBER:
EX-1

THESE PLANS AND DESIGNS ARE COPYRIGHT PROTECTED AND MAY NOT BE USED IN WHOLE OR IN PART WITHOUT THE WRITTEN CONSENT OF JSD PROFESSIONAL SERVICES, INC.



N50°04'02"W
(N48°19'W - DEED)

EXISTING ENVIRONMENTAL CORRIDOR (APPROXIMATE LOCATION FROM WAUKESHA COUNTY GIS)

WETLAND DELINEATED BY DAVE MEYER OF WETLAND & WATERWAY CONSULTING, LLC ON OCT. 4, 2018. FIELD LOCATED BY JSD PROFESSIONAL SERVICES ON OCT. 7, 2018 22,734 SF (0.52 AC.)

396.13'
(393.27' - CSM 11224)
(392.30' - DEED)

EXISTING ENVIRONMENTAL CORRIDOR (APPROXIMATE LOCATION FROM WAUKESHA COUNTY GIS)

N00°46'41"W
(N00°35'E - DEED)

S89°13'19"W
(N88°45'W - DEED)

Main Replacement Request - Fact Sheet

Street Name: Avid Hotel Wtm Ext

Developer/Owner: Purity Real Estate

Job Number: M00542

Engineering Data

Street/Easement:	From:	To:	Size	Length (Feet)
Meadow Lane			8	229
Total Footage.....Water Main Extension				229

Cost Summary

Total Utility Cost (incl bid, fees and labor)	\$0.00 /ft	\$0
--	------------	------------

Details:

This water main extension includes approximately 229 feet of 8-inch water main, and is in the Northwest pressure zone.

Exterior Entrance night view

