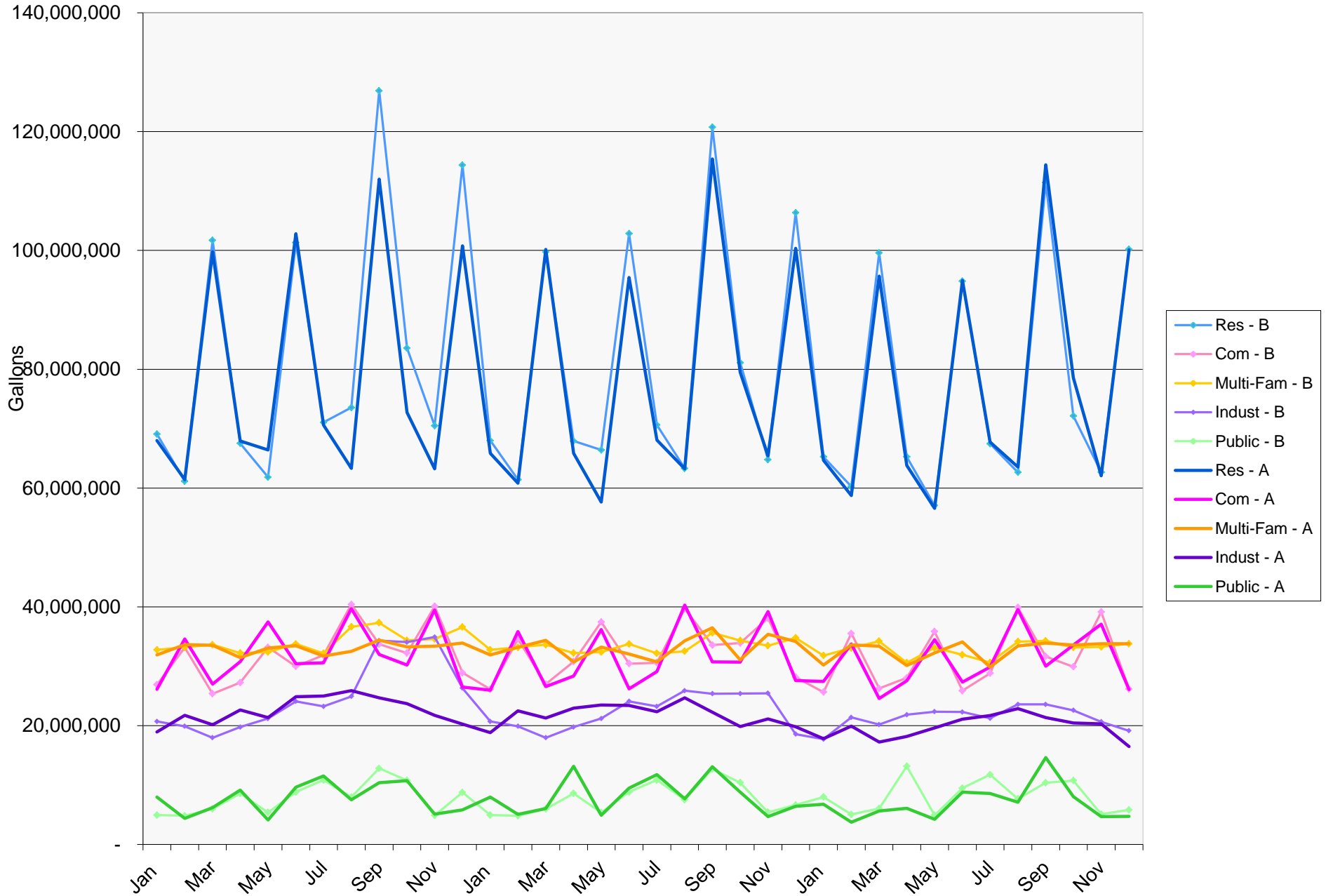


WWU
 Billed Gallons
 Actual v Budget
 2014 - 2016



**WAUKESHA WATER UTILITY
STATEMENT OF SOURCES AND USES OF CASH
PERIOD ENDING DECEMBER 31, 2016**

Cash Balance - November 30, 2016

\$32,033,002

SOURCES:

Operations:

Customers - water sales	\$770,405
Waste Water Utility - joint metering billing	65,789
Rent of utility property - cellular leases	11,908
Receipts on sewer bills	980,619
Other - miscellaneous	13,000
Total Cash From Operating Activities	\$1,841,721

Capital and Related Financing Activities:

Grants	
Contributions	2,914
Issuance of long-term debt	
Sale of short-term debt	
Interest income	13,214
Total Cash From Capital/ Investing Activities	\$16,128

Total Cash Receipts

\$1,857,849

USES:

Salaries, wages, payroll taxes and benefits	\$253,902
Subcontracted and outside services	37,904
Disbursement to city for sewer transfer	1,074,662
Pumping power	57,456
Purchase of materials and supplies	152,974
Tax equivalent - PILOT	
Acquisition of capital assets	1,718,685
Debt service - principal	
Debt service - interest	

Total Cash Used

\$3,295,583

Net Change in Cash

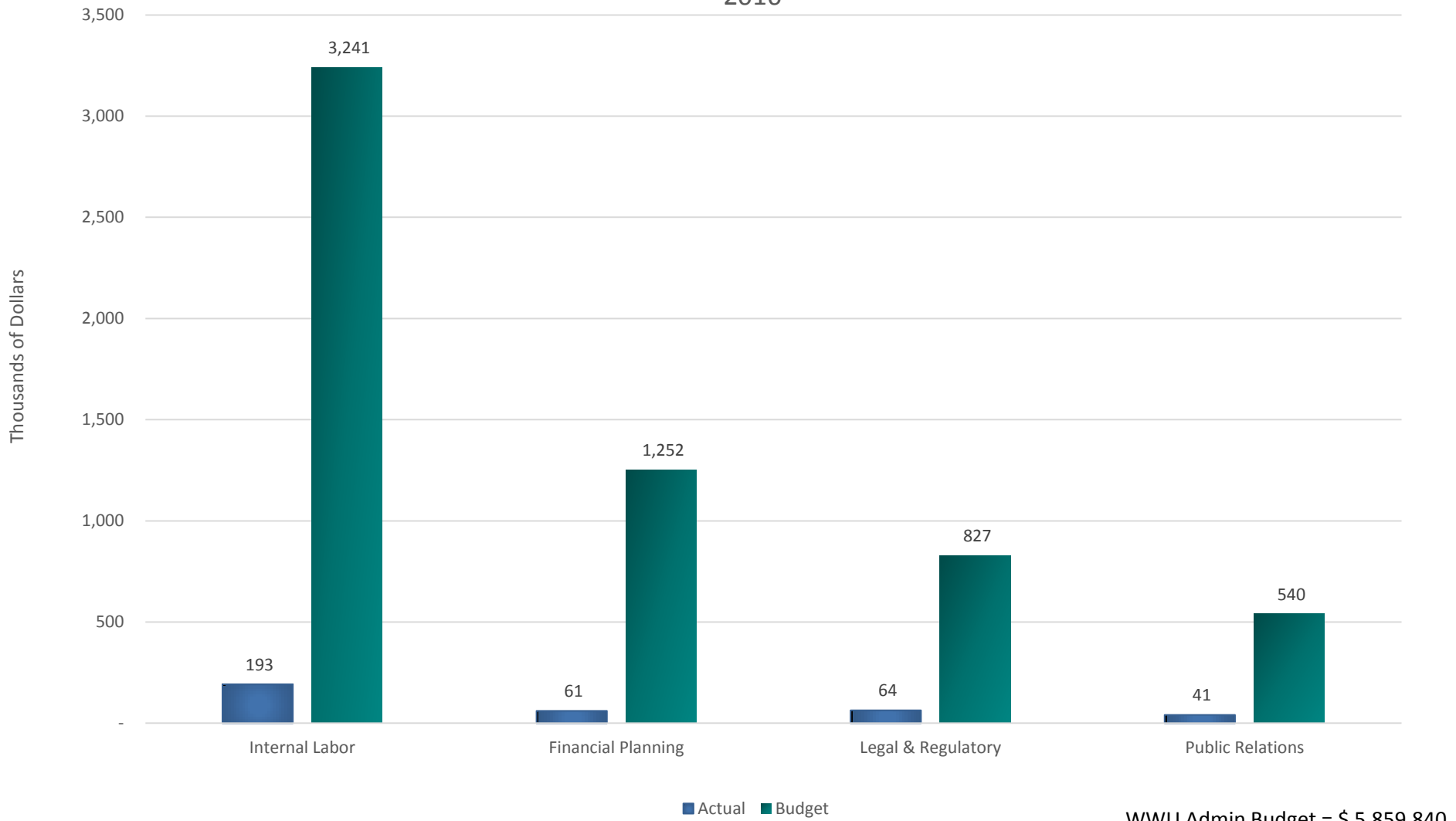
(\$1,437,734)

Cash Balance - December 31, 2016

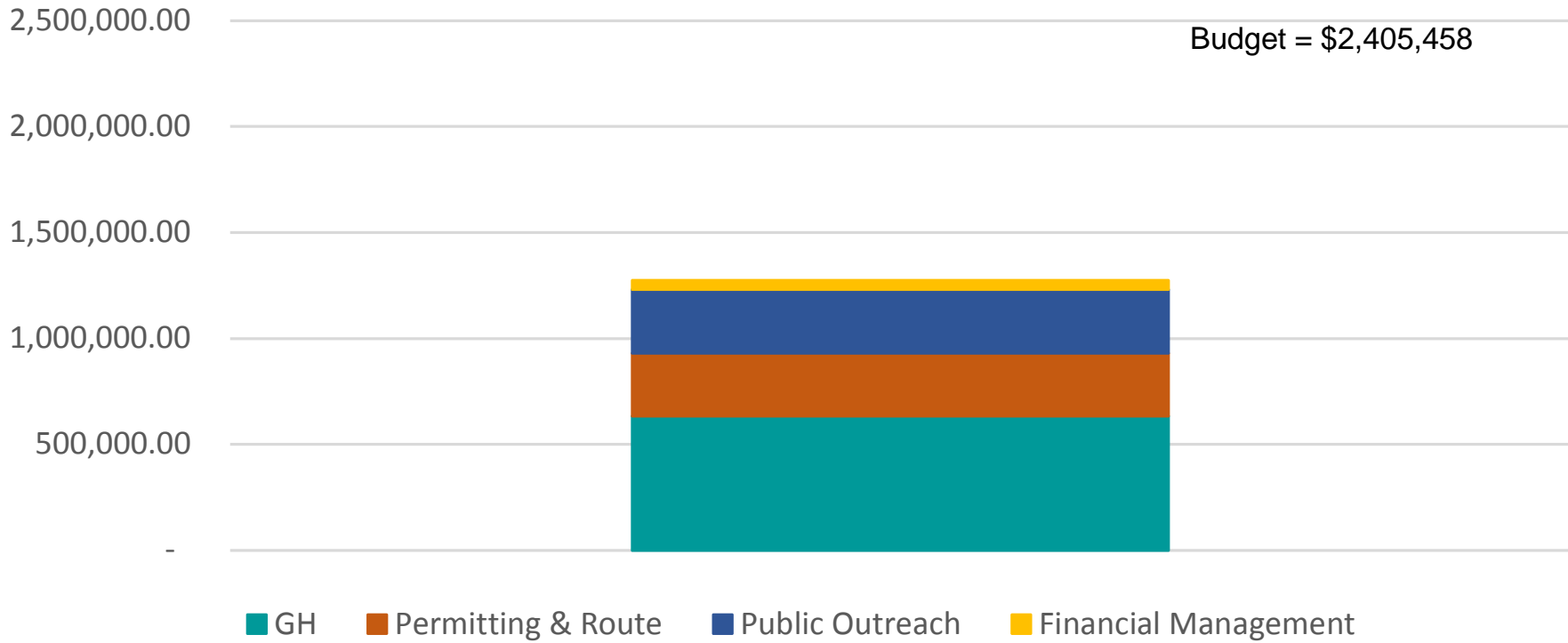
\$30,595,268



Future Water Supply
WWU Admin Sub Costs
2016



WWU Phase I Expenditures 1/13/2017



WWU
TRANSMISSION AND DISTRIBUTION
BUDGET VARIANCE ANALYSIS

Project	Project #	Description/Location	Budget	Current Estimate	PJC Total	Aldermanic District		Construction Completion
USH 18 (Moreland Blvd)	M00453	Valve Replacements, Hydrant Relocations and Hydrant Additions from Manhattan Drive to IH-94. Construction budgeted for 2017, but DOT moved to 2016	\$4,852,029	\$ 125,940	\$ 133,866	1	Terry Thieme	1-Oct
						3	Christopher Hernandez	
E. Moreland Bld, Fox River to West of Manhattan Dr.	M00487	Tie over existing services and hydrants to 12-inch main, abandon 6-inch main, add new 12-inch line to Airport Booster Station. Project mostly being done with City.		\$ 1,316,912	\$ 1,329,703	2	Eric Payne	4-Nov
						3	Christopher Hernandez	
Summit/Delafield, W of Green Meadow to Grandview	Cancelled by the City after Budget Preparation	Construction budgeted for 2016, but City pushed to a future year after budget was prepared		\$ -	\$ -	4	Joe Pieper	-
						14	Bill Boyle	
Summit/Delafield, E of Moreland Blvd to Spring St plus Intersection of North/Delafield/St Paul	M00491	Replacing 6-inch main from 1915 and 1928 with 8" and 12" mains. City project.		\$ 970,000	\$ 890,497	2	Eric Payne	30-Sep
						4	Joe Pieper	
						15	Cory Payne	
Grand, Hoover to Estberg	M00492	City re-surfacing project, we are tying over laterals and hydrants to allow for abandonment of a dual main.		\$ 409,000	\$ 363,236	6	Adam Jankowski	6-Jun
			10			Steve Johnson		
Greenfield Ave N, Main St to Arcadian	M00493	Replacing 6-inch main from 1924. City project.	\$ 420,000	\$ 305,044	3	Christopher Hernandez	1-Nov	
Tenny, Newhall to College	M00494	Replacing 6-inch main from 1921. City project.	\$ 400,000	\$ 243,872	8	Vance Skinner	1-Nov	
CTH JJ and Silvernail	Cancelled by the County - Roadway was Re-Designed	Project with the County to lower water main and relocate a hydrant as part of the intersection reconstruction.	\$ -	\$ -	2	Eric Payne		
Sunset Dr - Tenny to Les Paul	M00499	Water Main Off-sets due to storm sewer conflicts - negotiating change order with Contractor. Not bid.	\$ 259,000	\$ 277,113	9	Kathleen Cummings	1-Nov	
Grandview and Northview	M00503	Replacing 8 inch main from 1967	\$ 99,281	\$ 82,260	2	Eric Payne	11-Nov	
					4	Joe Pieper		
					5	Peter Bartels		
					14	Bill Boyle		
<i>Routine Projects</i>			\$ 4,852,029	\$ 3,900,852	\$ 3,625,590			
<i>Misc Routine</i>			\$ 497,142	\$ 497,142	\$ 497,142			
<i>Total Routine</i>			\$ 5,349,171	\$ 4,397,994	\$ 4,122,732			

Main Street, Clinton to Barstow (Segment AC)	GLCD0005	Replacing 12-inch and 10-inch mains from 1909 with a 24-inch main. City project.	\$10,222,615	\$ 792,600	\$ 688,000	11	Erik Helgestad	29-Jul
Les Paul, 12" Main Sunset to Broadway, Broadway from Les Paul to Oriole (Segment AW - RSE Pressure Zone)	GLCD0003	New 12-inch diameter main part of the RSE Zone. WWU only project.		\$ 5,475,528	\$ 5,039,265	9	Kathleen Cummings	7-Oct
Les Paul, 24" Main Sunset to Broadway (Segment AA - Central Pressure Zone)		Replacing 16-inch main from 1979 with a 24-inch. WWU only project.						
Pressure Reducing Station at Highline	GLCD0006	Adding new PRVs to Highline booster station to allow for new PRV on GLCD0003 RSE line and eliminate the existing confined space pit.		\$ 27,376	\$ 27,376	9	Kathleen Cummings	1-May
Main St., N. Barstow St to Lombardi Way	GLCD0007	Project without the City to continue segment AC, replacing existing main with 24-inch.		\$ 1,394	\$ 1,394	3	Christopher Hernandez	2017 / 2018
			11			Erik Helgestad		
<i>Distribution System Improvements</i>			\$10,222,615	\$ 6,296,897	\$ 5,756,035			

Total Transmission & Distribution			\$ 15,571,786	\$ 10,694,891	\$ 9,878,767		
--	--	--	---------------	---------------	--------------	--	--

Bold Totals are Based on Bids