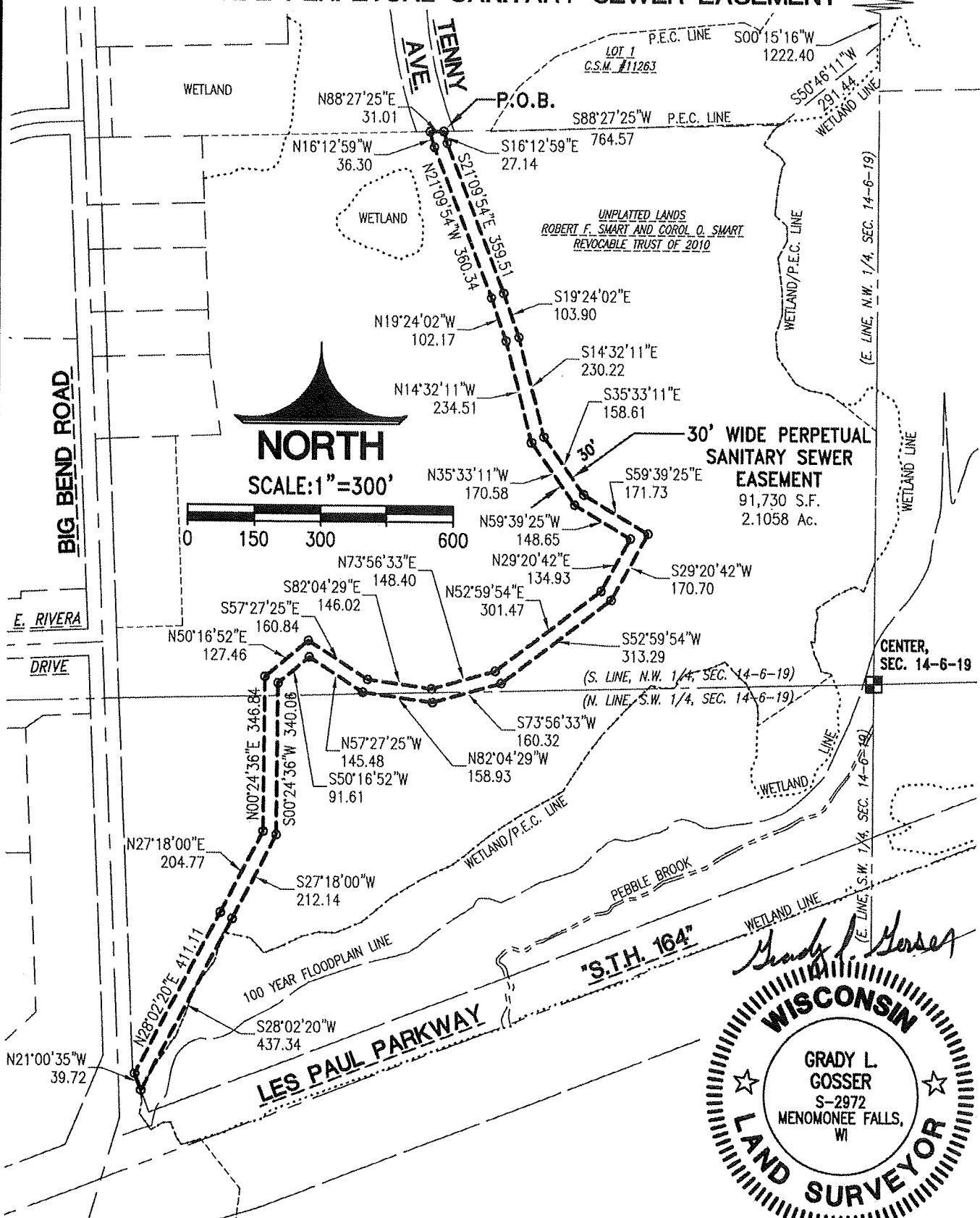


EXHIBIT "B"

30' WIDE PERPETUAL SANITARY SEWER EASEMENT

N. 1/4 CORNER,
SEC. 14-6-19



THIS EXHIBIT WAS PREPARED BY GRADY L. GOSSER, P.L.S. (S-2972)

DATE: 6-29-15

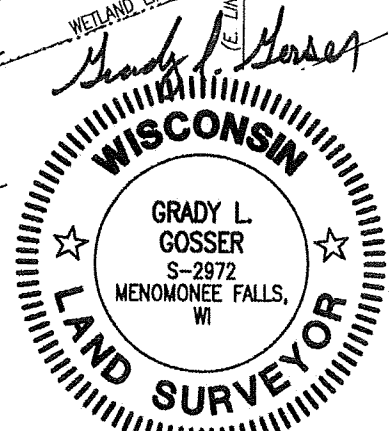


EXHIBIT "B" (Continued)

30' WIDE PERPETUAL SANITARY SEWER EASEMENT

LEGAL DESCRIPTION:

All that part of the Southwest 1/4 and Southeast 1/4 of the Northwest 1/4 and the Northwest 1/4 and Northeast 1/4 of the Southwest 1/4 of Section 14, Town 6 North, Range 19 East, in the City of Waukesha, Waukesha County, Wisconsin, now being more particularly bounded and described as follows:

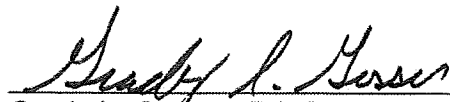
Commencing at the North 1/4 Corner of said Section 14; Thence South 00°15'16" West and along the East line of the said Northwest 1/4 Section, 1222.40 feet to a point; Thence South 50°46'11" West and along the South line of Lot 1 of Certified Survey Map No. 11263, 291.44 feet to a point; Thence South 88°27'25" West and along the said South line and then the South Right-of-Way line of "Tenny Avenue", 764.57 feet to the place of beginning of lands hereinafter described;

Thence South 16°12'59" East, 27.14 feet to a point; Thence South 21°09'54" East, 359.51 feet to a point; Thence South 19°24'02" East, 103.90 feet to a point; Thence South 14°32'11" East, 230.22 feet to a point; Thence South 35°33'11" East, 158.61 feet to a point; Thence South 59°39'25" East, 171.73 feet to a point; Thence South 29°20'42" West, 170.70 feet to a point; Thence South 52°59'54" West, 313.29 feet to a point; Thence South 73°56'33" West, 160.32 feet to a point; Thence North 82°04'29" West, 158.93 feet to a point; Thence North 57°27'25" West, 145.48 feet to a point; Thence South 50°16'52" West, 91.61 feet to a point; Thence South 00°24'36" West, 340.06 feet to a point; Thence South 27°18'00" West, 212.14 feet to a point; Thence South 28°02'20" West, 437.34 feet to a point on the East Right-of-Way line of "Big Bend Road"; Thence North 21°00'35" West and along the said East Right-of-Way line, 39.72 feet to a point; Thence North 28°02'20" East, 411.11 feet to a point; Thence North 27°18'00" East, 204.77 feet to a point; Thence North 00°24'36" East, 346.84 feet to a point; Thence North 50°16'52" East, 127.46 feet to a point; Thence South 57°27'25" East, 160.84 feet to a point; Thence South 82°04'29" East, 146.02 feet to a point; Thence North 73°56'33" East, 148.40 feet to a point; Thence North 52°59'54" East, 301.47 feet to a point; Thence North 29°20'42" East, 134.93 feet to a point; Thence North 59°39'25" West, 148.65 feet to a point; Thence North 35°33'11" West, 170.58 feet to a point; Thence North 14°32'11" West, 234.51 feet to a point; Thence North 19°24'02" West, 102.17 feet to a point; Thence North 21°09'54" West, 360.34 feet to a point; Thence North 16°12'59" West, 36.30 feet to a point on the said South Right-of-Way line of said "Tenny Avenue"; Thence North 88°27'25" East and along the said South Right-of-Way line, 31.01 feet to the point of beginning of this description.

Said Easement contains 91,730 Square Feet (or 2.1058 Acres) of land, more or less.

Date: 6/29/15




Grady L. Gosser, P.L.S.
Professional Land Surveyor, S-2972
TRIO ENGINEERING, LLC
12660 W. North Avenue, Building "D"
Brookfield, WI 53005
Phone: (262)790-1480