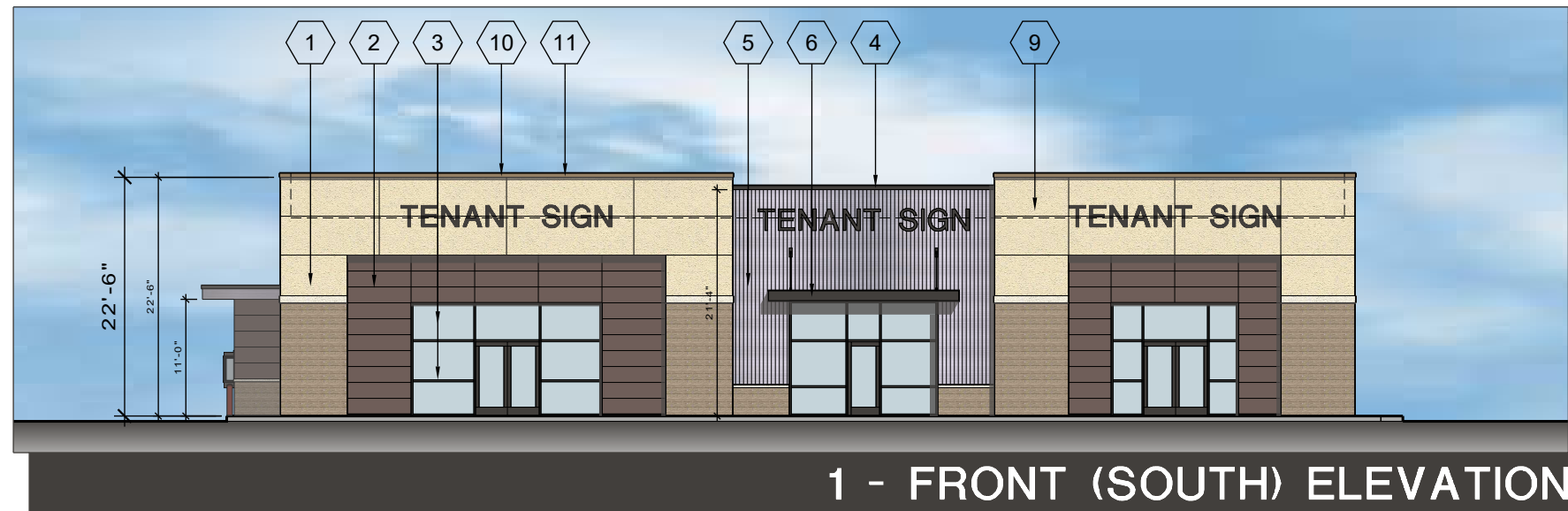


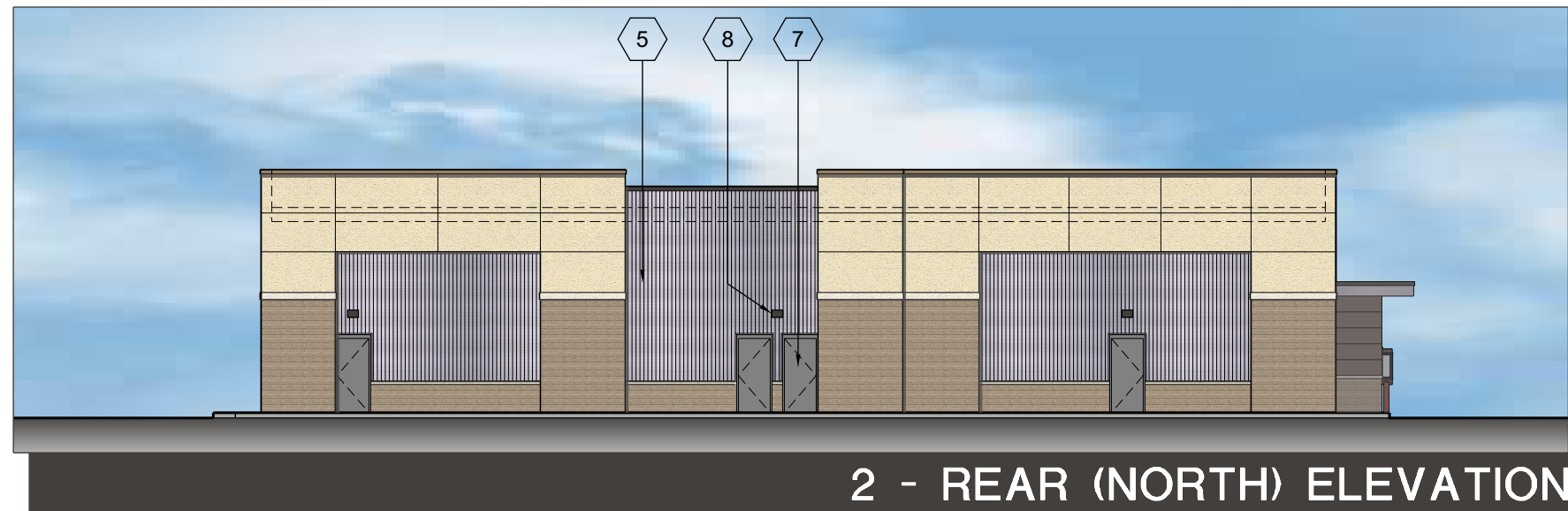
- 1 UTILITY SIZE BRICK - HEBRON BRICK COMPANY; COLOR SEA GREY #6
- 2 FIBER CEMENT PANELS - NICHIIA ARCHITECTURAL BLOCK. COLOR - MOCHA
- 3 ALUMINUM STORE FRONT & GLAZING SYSTEM - BLACK ANODIZED ALUMINUM w/ 1" LOW-E, CLEAR, INSULATED GLAZING
- 4 METAL TRIM - COPING; COLOR CHARCOAL GREY
- 5 CORRUGATED METAL PANEL - GALVALUME FINISH
- 6 METAL CANOPY/FASCIA; COLOR CHARCOAL GREY
- 7 H.M. INSULATED DOOR, PAINT TO MATCH ADJACENT BUILDING MATERIAL
- 8 EXTERIOR LIGHT FIXTURE, CUT-OFF TYPE WALL PACK
- 9 ROOF LINE BEYOND
- 10 PRE-FINISHED METAL COPING - COLOR SIERRA TAN
- 11 DRYVIT EXTERIOR INSULATION FINISH SYSTEM (E.I.F.S.);FINISH - SANDPEBBLE; COLOR - CANVAS

**NOTES & MATERIALS**



**1 - FRONT (SOUTH) ELEVATION**

SCALE: 1/16" = 1'-0"



**2 - REAR (NORTH) ELEVATION**

SCALE: 1/16" = 1'-0"



**3 - SIDE (WEST) ELEVATION**

SCALE: 1/16" = 1'-0"



**4 - SIDE (EAST) ELEVATION**

SCALE: 1/16" = 1'-0"