

**STATISTICS**

**UNIT MIX**

72 RESIDENTIAL UNITS

**PARKING**

ENCLOSED STALLS 85  
SURFACE STALLS 38

TOTAL PARKING 123 (1.7 STALLS/UNIT)



FIRST FLOOR  
AMENITY SPACE

OUTDOOR  
AMENITIES

RAPIDS TRAIL

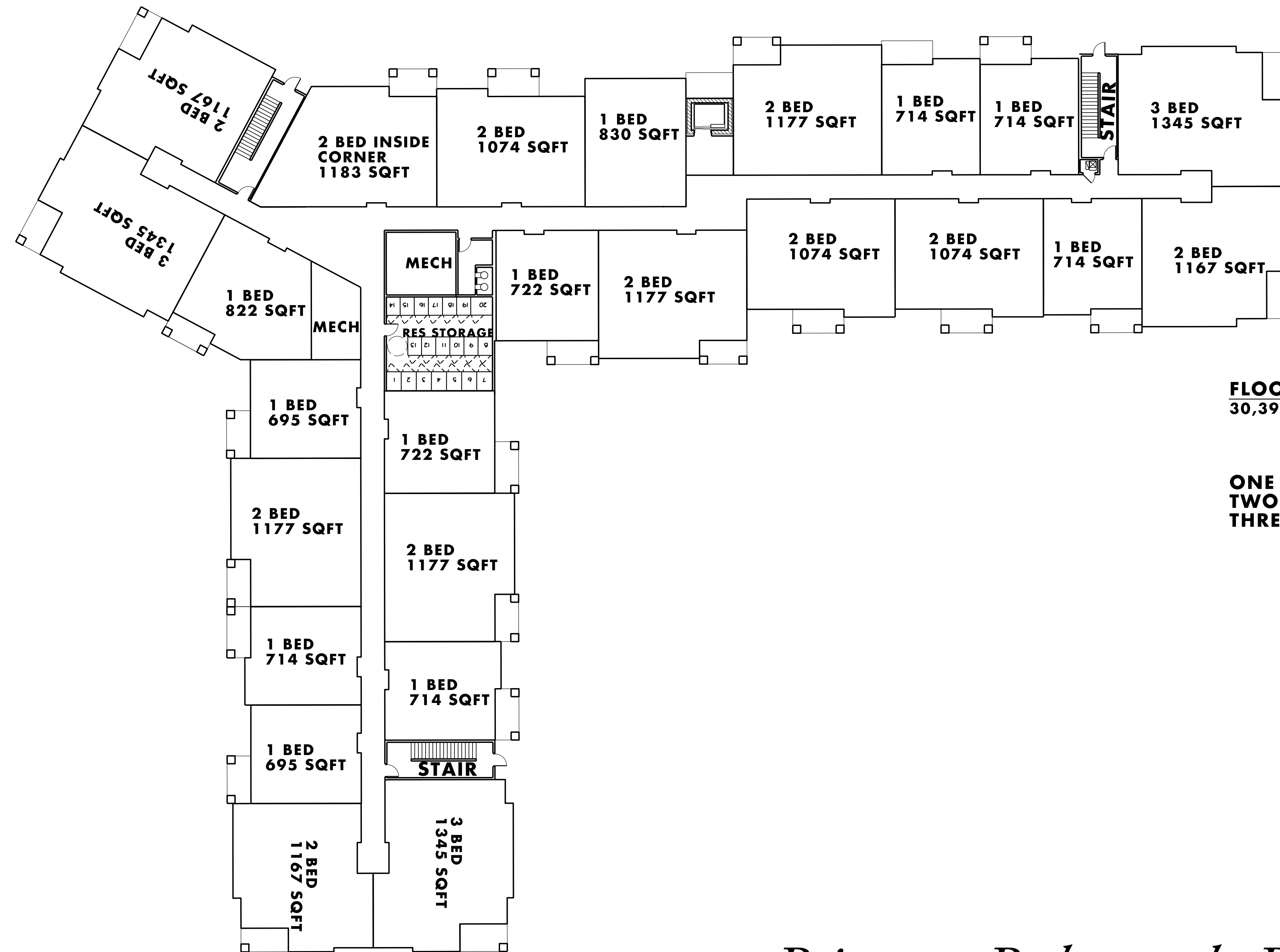
Utility Easement

27 DECEMBER 2021

*River Rd and Rapids Trail*  
**MULTIFAMILY**  
*Waukesha, Wisconsin*







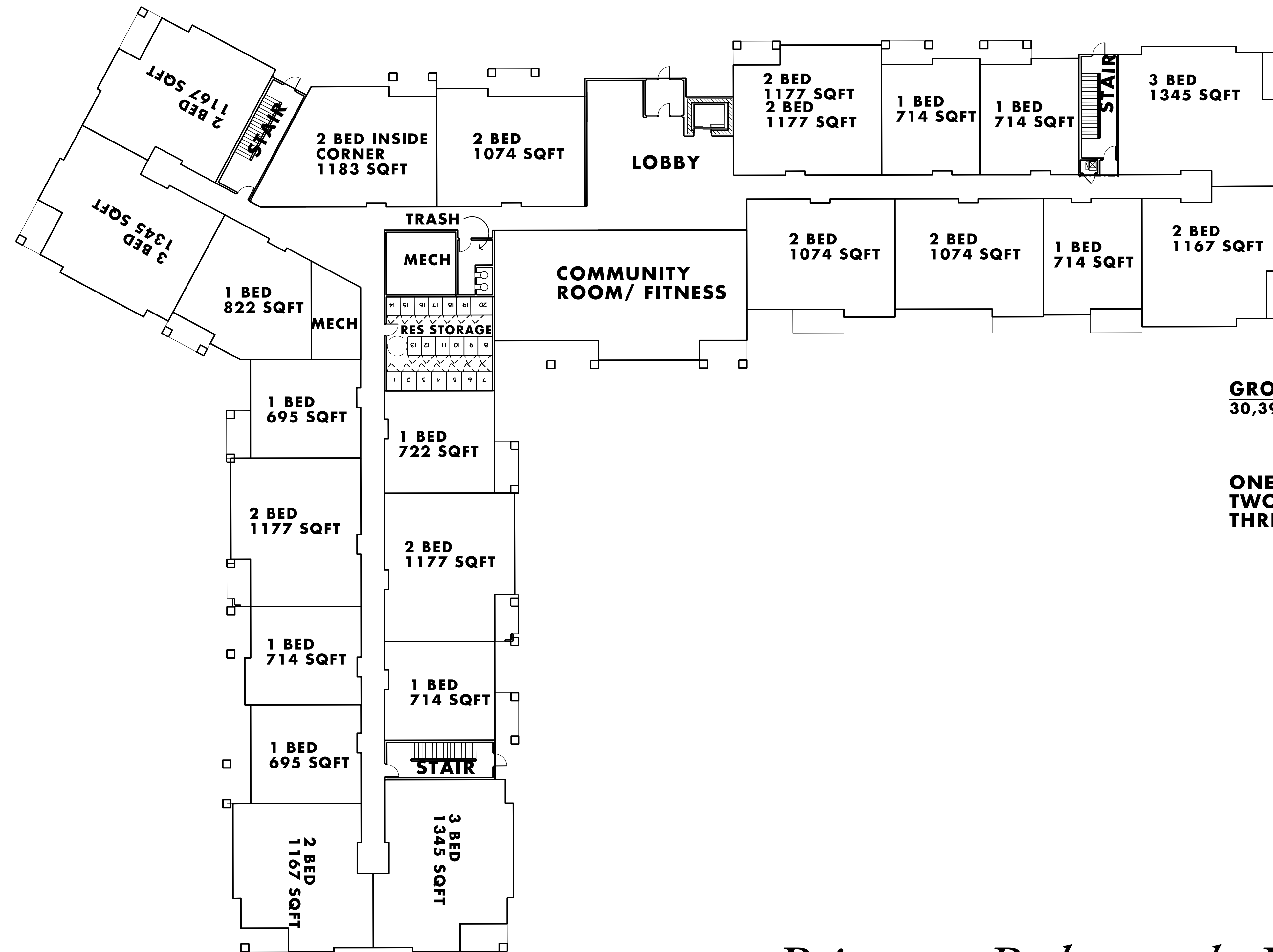
**FLOORS 2-3**  
30,395 SQFT

**ONE BED - 11**  
**TWO BED - 11**  
**THREE BED - 3**

16 SEPTEMBER 2021

*River Rd and Rapids Trail*  
**MULTIFAMILY**  
*Waukesha, Wisconsin*





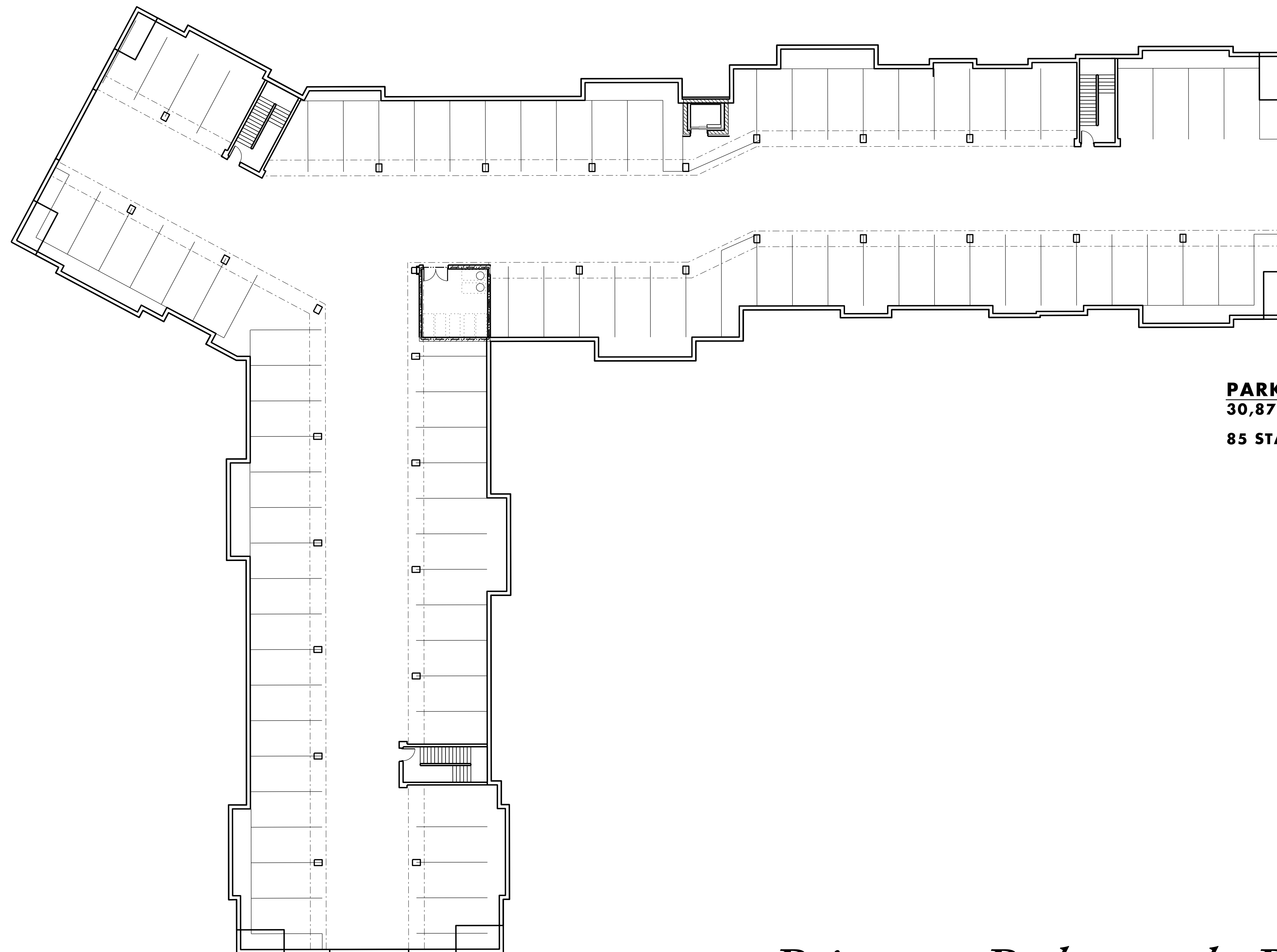
**GROUND FLOOR**  
30,395 SQFT

**ONE BED - 9**  
**TWO BED - 10**  
**THREE BED - 3**

16 SEPTEMBER 2021

*River Rd and Rapids Trail*  
**MULTIFAMILY**  
*Waukesha, Wisconsin*

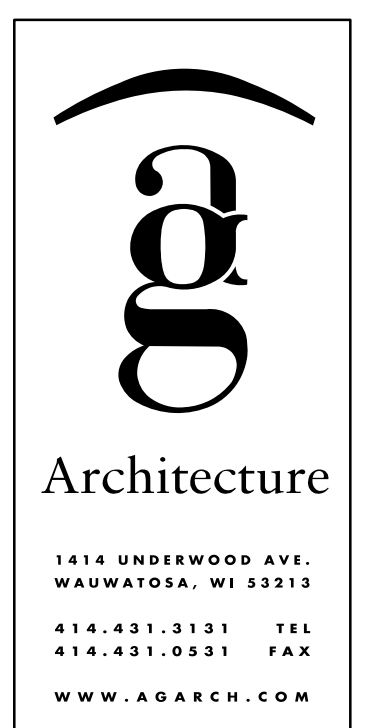




**PARKING FLOOR**  
**30,875 SQFT**  
**85 STALLS**

16 SEPTEMBER 2021

*River Rd and Rapids Trail*  
**MULTIFAMILY**  
*Waukesha, Wisconsin*





MATERIAL LEGEND

B1 - BRICK COLOR 1  
 B2 - BRICK COLOR 2

S - STONE VENEER

FC1 - FIBER CEMENT LAP SIDING WITH 5" EXPOSURE - MONTEREY TAUPE  
 FC2 - FIBER CEMENT LAP SIDING WITH 5" EXPOSURE - COBBLESTONE  
 FC3 - FIBER CEMENT LAP SIDING WITH 5" EXPOSURE - AGED PEWTER

FP1 - FIBER CEMENT PANEL SMOOTH - COBBLESTONE  
 FP2 - FIBER CEMENT PANEL SMOOTH - MONTEREY TAUPE  
 FP3 - FIBER CEMENT PANEL SMOOTH - BOOTHBAY BLUE  
 FP4 - FIBER CEMENT PANEL SMOOTH - ARCTIC WHITE



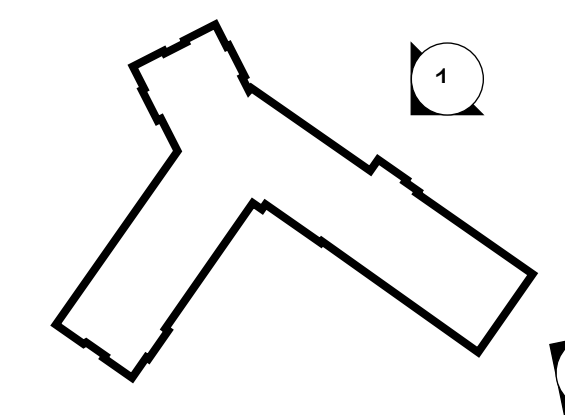
GARAGE ENTRY ELEVATION

2  
 A500  
 1/8" = 1'-0"



RIVER ROAD ELEVATION

1  
 A500  
 1/8" = 1'-0"





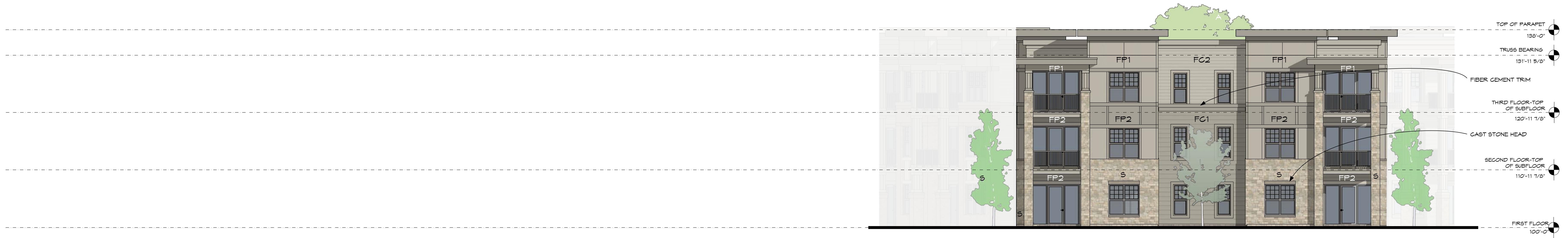
MATERIAL LEGEND

B1 - BRICK COLOR 1  
 B2 - BRICK COLOR 2

S - STONE VENEER

FC1 - FIBER CEMENT LAP SIDING WITH 5" EXPOSURE - MONTEREY TAUPE  
 FC2 - FIBER CEMENT LAP SIDING WITH 5" EXPOSURE - COBBLESTONE  
 FC3 - FIBER CEMENT LAP SIDING WITH 5" EXPOSURE - AGED PEWTER

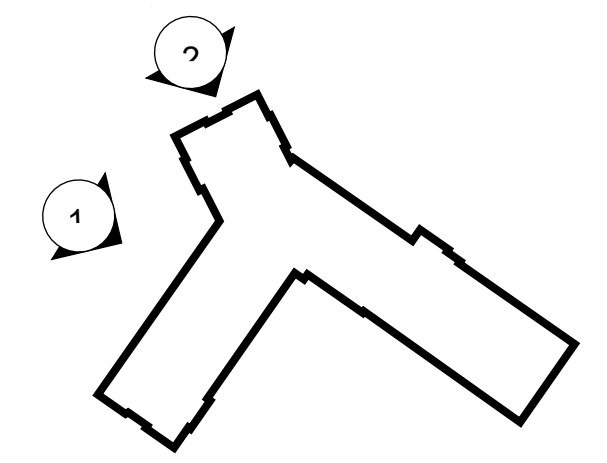
FP1 - FIBER CEMENT PANEL SMOOTH - COBBLESTONE  
 FP2 - FIBER CEMENT PANEL SMOOTH - MONTEREY TAUPE  
 FP3 - FIBER CEMENT PANEL SMOOTH - BOOTHBAY BLUE  
 FP4 - FIBER CEMENT PANEL SMOOTH - ARCTIC WHITE



2 SAYLESVILLE RD CORNER ELEVATION  
 1/8" = 1'-0"



1 SAYLESVILLE RD ELEVATION  
 1/8" = 1'-0"



RIVER RD AND RAPIDS TRAIL  
 Multi-Family Development  
 WAUKESHA WISCONSIN



1414 UNDERWOOD AVE.  
 WAUKESHA, WI 53213  
 414.431.3131 TEL  
 414.431.0531 FAX  
 WWW.AGARCH.COM  
 ARCHITECTURE  
 ENGINEERING  
 PLANNING

DATE  
 PROJECT  
 SHEET NO.





VIEW ALONG SAYLESVILLE RD. AND RIVER RD.  
WAUKESHA, WISCONSIN







BUILDING END DETAIL ALONG SAYLESVILLE RD.  
WAUKESHA, WISCONSIN







**BUILDING ENTRY**  
WAUKESHA, WISCONSIN







VIEW FROM RIVER RD.  
WAUKESHA, WISCONSIN

